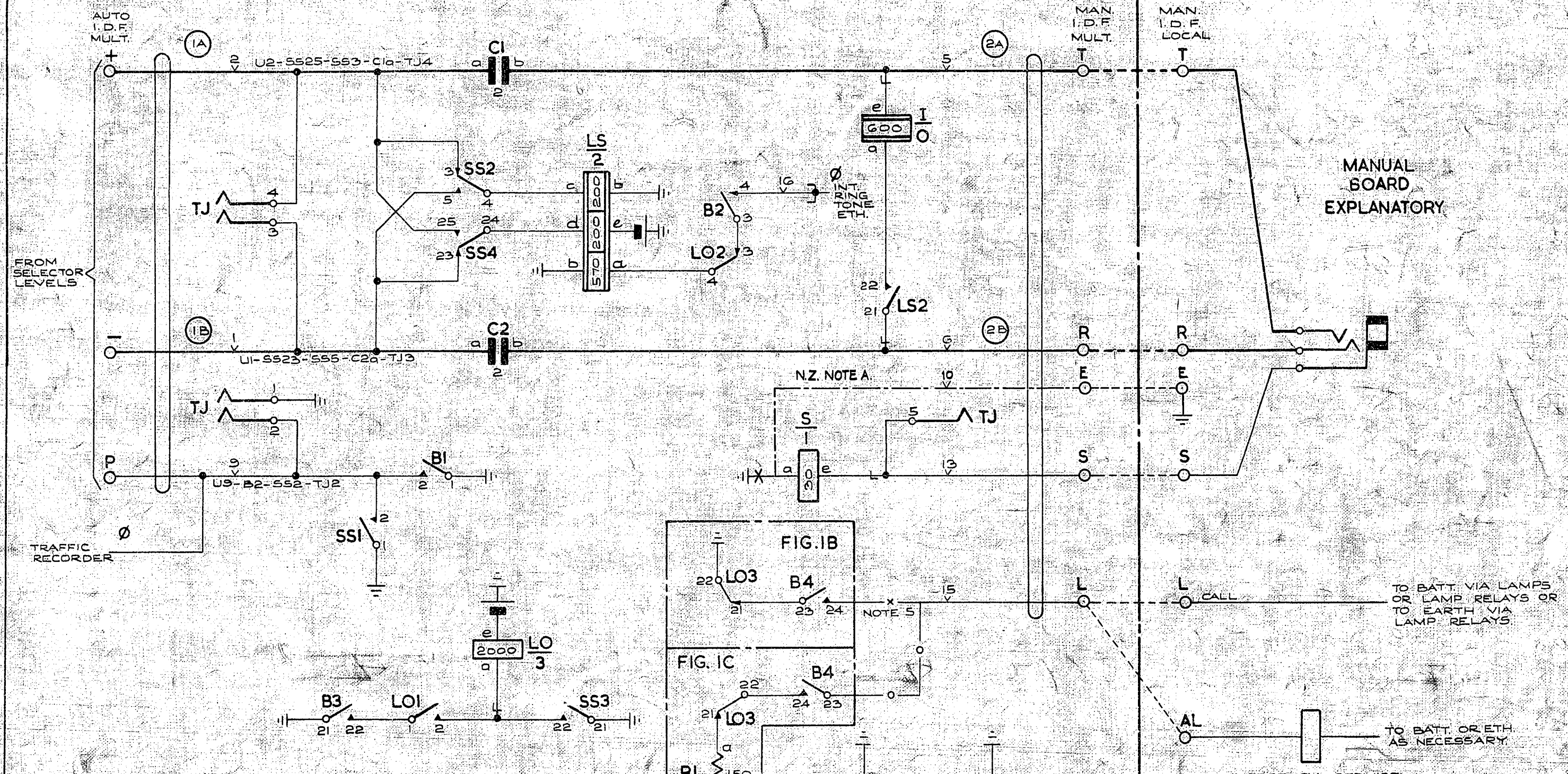


FIG. 1A.

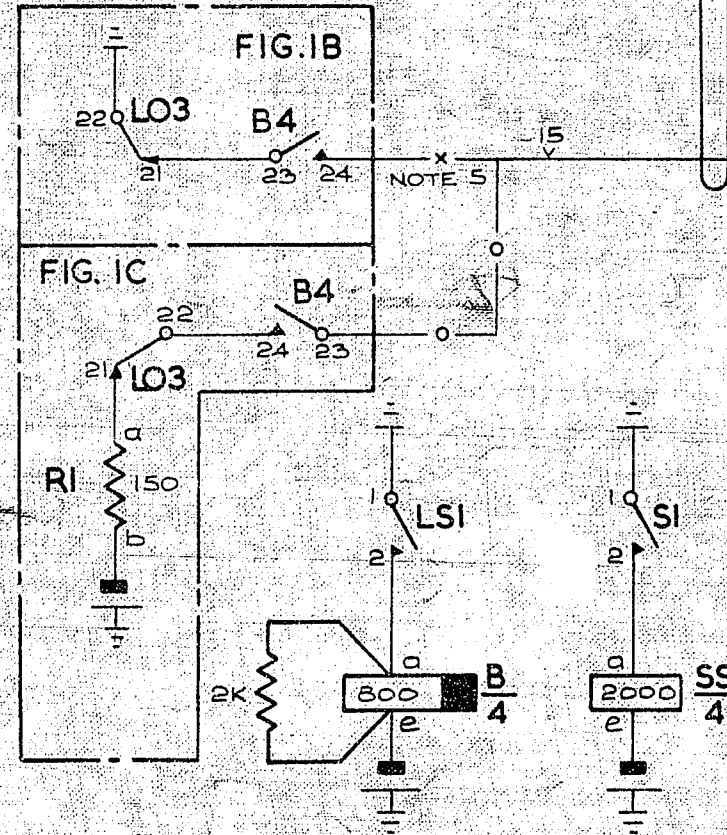


NOTES:-

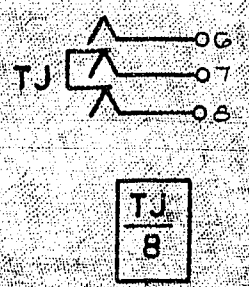
1. FUSE 1.5A PER CCT.
2. SHELF JACK U.P.T.S. 9 & 11 TO MAKE WHEN RELAY SET IS REMOVED FROM SHELF.
3. ALL WIRING TO BE 25SWG UNLESS OTHERWISE SPECIFIED.
4. Ø FOR WIRING SEE GBW 10640 OR EQUIV.
5. WHEN BATTERY CONNECTED CALLING LAMPS OR LAMP RELAYS ARE FITTED, PROVIDE FIG. IB & WIRING SHOWN THIS X. WHEN EARTH CONNECTED CALLING LAMP RELAYS ARE FITTED, PROVIDE FIG. IC & WIRING SHOWN THIS 0.

BATT. W. U12-LS5-BE-SS5-LO2-(R1B)
 ETH. R. U11-LS6-LS1-B21-B1-(S0-S1-SS21-SS1)-(LO22)-TJ1

BATT. BK. 22.5WG FUSE (3B) U12
 ETH. R. 22.5WG ETH. BAR (3A) U11



N.Z. NOTES:
 A. AT PM DISCONNECT EARTH FROM 6a AND USE CONNECTIONS SHOWN



AMENDMENT	PARTICULARS	ISSUE	DATE	APP.
N.Z. NOTE A & CONNS ADDED	(83523)	2A	11-7-67	<i>[Signature]</i>
REF. TO LAMPS DELETED FROM NOTES PART 2	(33523)	2	17-7-59	<i>[Signature]</i>
	(33523)	1	17-7-59	<i>[Signature]</i>

SELECTOR LEVEL RELAY SET
 EMERGENCY SERVICE
 I/C FROM UAX NZ.13 OR AMX.
 W.E. TOLL BOARD
 (BRIDGE CONTROL)

SIZE: S 50V W
GBW 15600