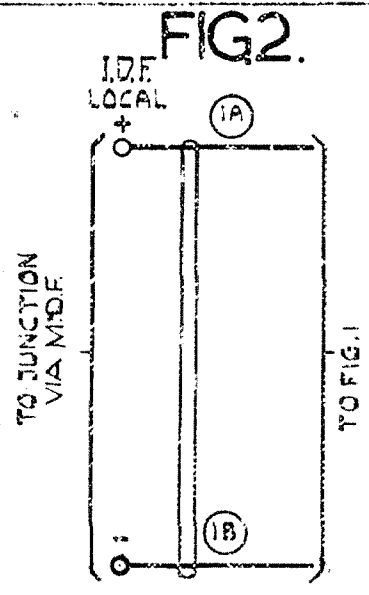
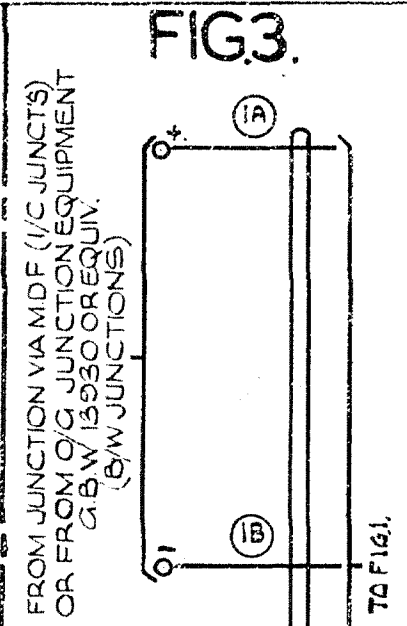


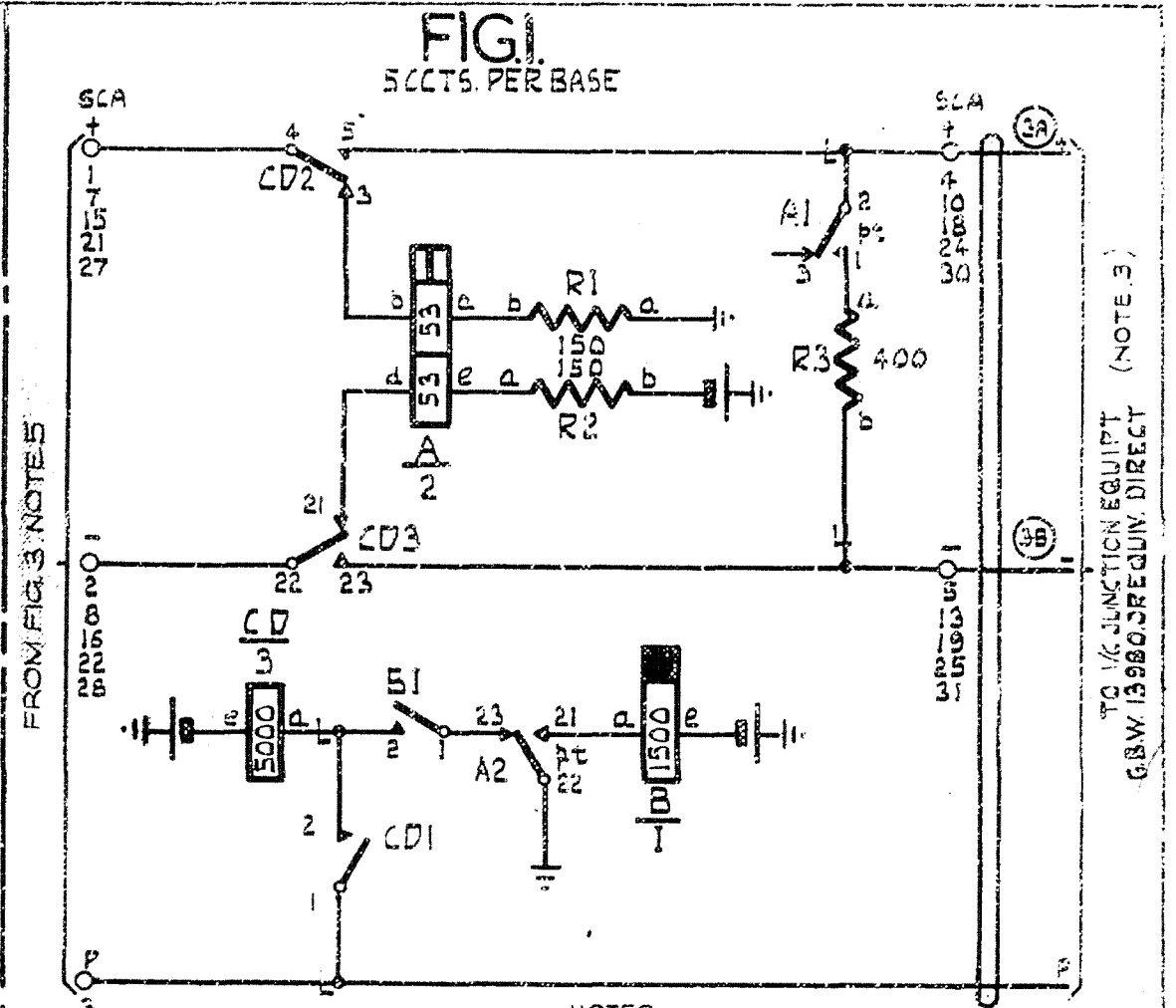
N.Z.P.O.	DRAWN	CHECKED	WIRING	CIRCUIT	GBW 15510
	REC	27/3/59			
AMENDMENT PARTICULARS					
NOTES 4855&IDF TERMINALS IN FIG 3 ADDED (69407)	3	2.7.62			DIAL TONE SUPPRESSION CIRCUIT
FIG 1 REPTO FIGS 2 OR 3 REVISED NOTE 3 ADDED (85398)	2	18/11/60			ON DIALLED V.F. TOLL CALLS AT
(82145)	1	14.5.59	OK		LAX NZ 13
ISSUE DATE APPD. REF.					
50V					



TO FIG. 1



FROM O/G JUNCTION EQUIPMENT G.B.W. 13930 OR EQUIV. (B/W JUNCTS. ONLY)



FROM FIG. 3 NOTES

- NOTES:-
- AT SOME EARLY EXCHANGES THE -VE & +VE LEADS ONLY ARE CABLED FROM FIG. 1 TO FIG. 2 FOR UNIDIRECTIONAL JUNCTS. FIG. 2 IS NOT TO BE PROVIDED FOR NEW WORK.
 - FUSE 1.5A PER 5 CIRCUITS.
 - ALL WIRING TO BE 22 SW.G. UNLESS OTHERWISE SPECIFIED.
 - G.B.W. 15510 IS REQUIRED ONLY WHERE THE JUNCTION SERVED BY THE ASSOCIATED G.B.W. 13930 OR EQUIV. IS A D.C. JUNCTION OVER WHICH DIALLING CAN BE RECEIVED FROM V.F. CIRCUITS.
 - AT SOME EARLY EXCHANGES THESE I.D.F. TERMINATIONS ARE NOT PROVIDED & FIG. 1 IS CABLED DIRECTLY TO G.B.W. 13930 OR EQUIV.

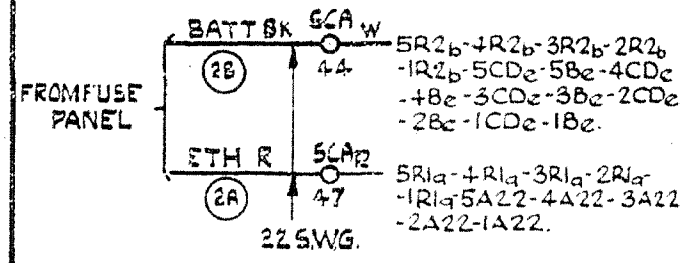


FIG. 1
5 CCTS. PER BASE

FIG. 2.

FIG. 3.