

FIG 1
RACK FUSE ALARM
NOT FITTED ON A.E.R. OR RACK WITH
FUSE PANELS TO FIG. 7

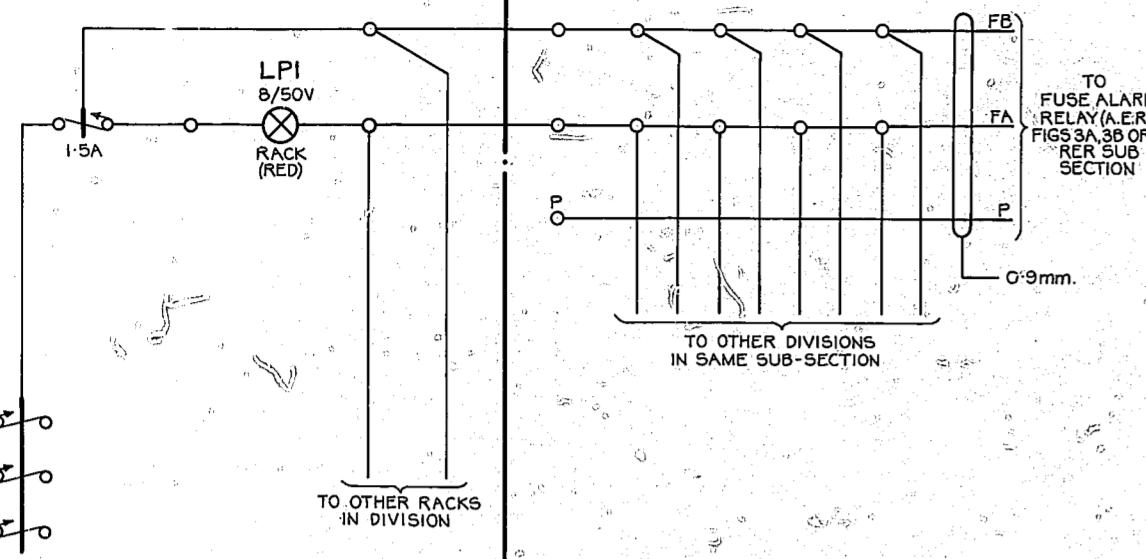


FIG 2
ALARM CLASSIFICATION
STRIP CONNECTION
PER SUB-SECTION

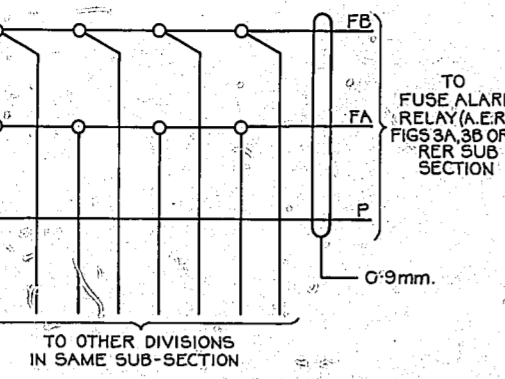


FIG 3A
-VE BATTERY
FUSE ALARM RELAY
PER SUB SECTION (OTHER THAN POWER & THAT CONTAINING
A.E.R. WHEN GROUP FUSE PANELS ARE PROVIDED)
NOTE 4

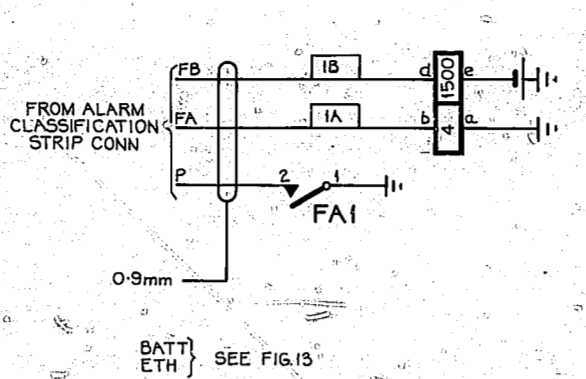
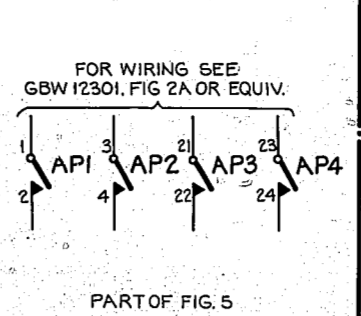
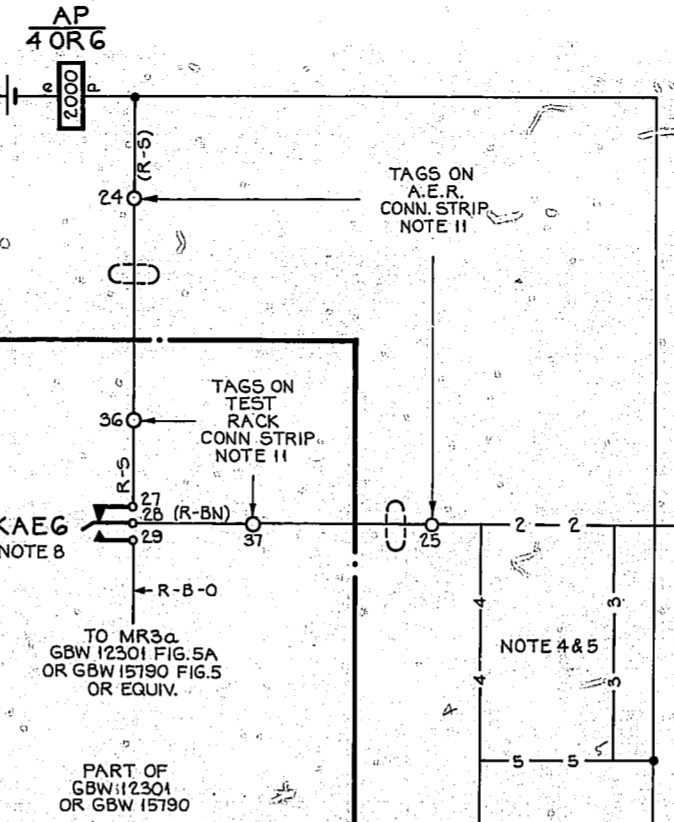
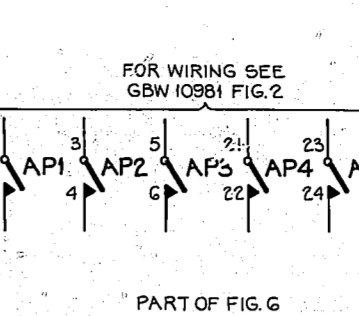


FIG 3B
+VE BATTERY
FUSE ALARM RELAY
PER SUB-SECTION

SEE FIG 13



WHEN USED WITH GBW 12301
OR GBW 15190
WHEN USED WITH GBW 10981
(SECTIONS ONLY) OR GBW 15810
WHEN USED WITH GBW 10981
(FLOORS & SECTIONS)



WHEN USED WITH GBW 12301
OR GBW 15190 USE
TAGS 25-26 (R-BN)
TAGS ON
A.E.R.
CONN. STRIP
NOTE II

FIG. 13
FUSE ALARM RELAY
FOR SUB-SECTION CONTAINING THE A.E.R.
USED WHEN GROUP FUSE PANELS ARE PROVIDED
NOTE 4

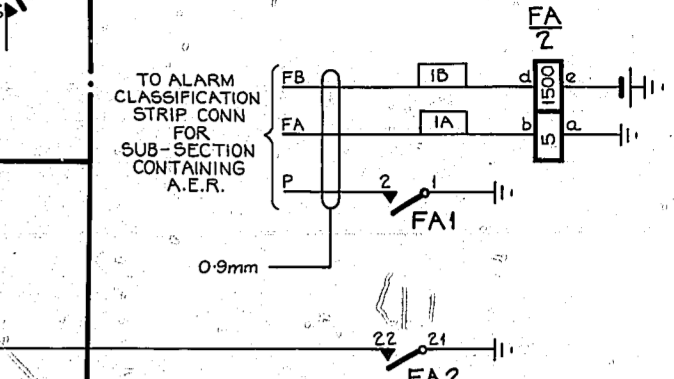


FIG. 5
AUXILIARY 'AP' RELAY
4 CONTACTS

FIG. 6
AUXILIARY 'AP' RELAY
6 CONTACTS

BATT. FUSE (BK 0.7mm) AP(45) AP2 (LP3b FIG. 8)
0.9mm. NOTE 3

BATT. FUSE (BK 0.7mm) FA(47) BK OR WH FA2 ETC. MAX. 10
0.9mm. NOTE 3
ETH BAR R. 0.7mm. (FA2)-FA2-FA1 ETC. MAX. 10

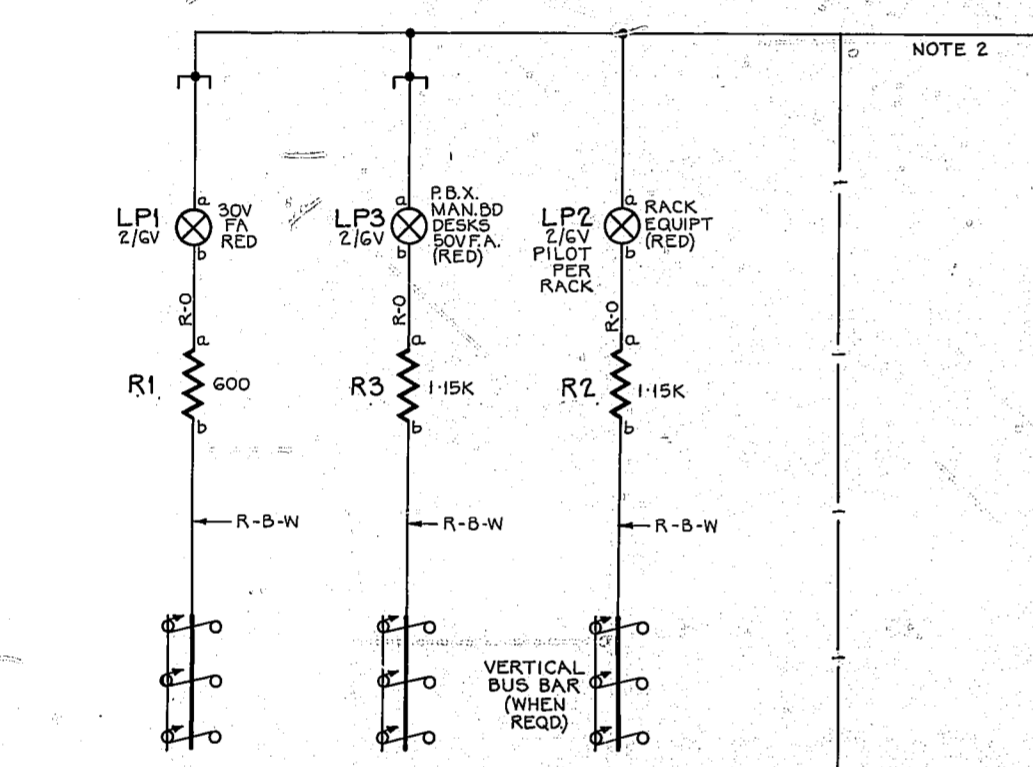


FIG 7
AUTO MANUAL FUSE DISTRIBUTION
PER EXCHANGE
NOTE 2 & 7

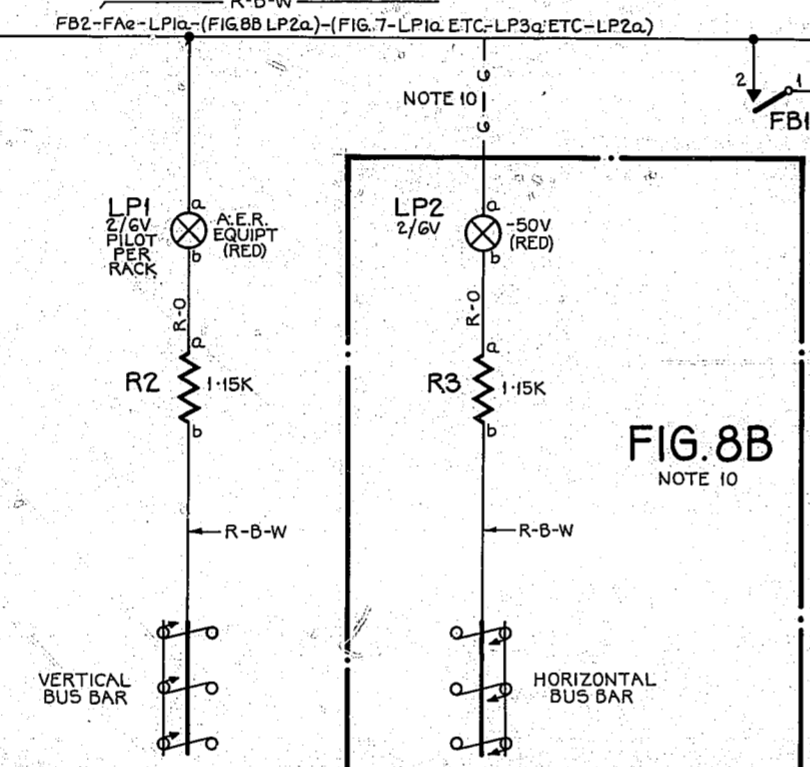


FIG. 8A
A.E.R. FUSE ALARM
RELAYS
PER EXCHANGE

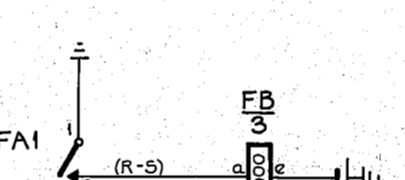


FIG. 8B
NOTE 10

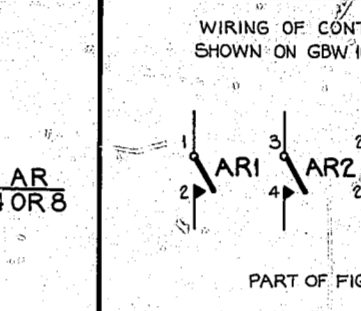


FIG. 4A
EXCHANGES WITH
2 FLOORS.
FIG. 4B
EXCHANGES WITH
3 FLOORS.
AUXILIARY 'AR' RELAY PER EXCHANGE

BATT. FUSE (BK 0.7mm) AR(48) ARE
0.9mm. NOTE 3

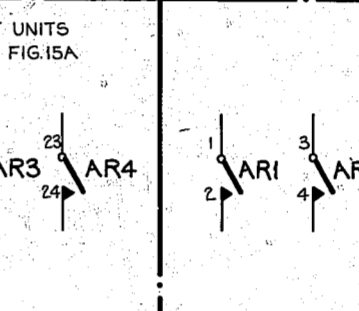


FIG. 4B
EXCHANGES WITH
3 FLOORS.
AUXILIARY 'AR' RELAY PER EXCHANGE

BATT. FUSE (BK 0.7mm) AR(48) ARE
0.9mm. NOTE 3

NOTES:-

- FUSE: 1.5A PER 10 'FA' RELAYS
FIG. 3
FIG. 13
FIG. 4A OR 4B 1.5A
FIG. 5 1.5A
FIG. 6 1.5A
FIG. 8A 1.5A PER 10 'FB' RELAYS
FIG. 11 & RES. 5.1
FIG. 10 1.5A
FUSED ON FIG. 8A FOR
EXCHANGES WITHOUT
GRP FUSE PANELS
OTHERWISE FUSED ON
AUX. GRP. FUSE PANEL
ON R.E.R.
FUSE ON FIG. 7 OR
FIG. 8A IF FIG. 7 IS
NOT FITTED.
- WHEN FIG. 7 IS PROVIDED ON A.E.R. WIRE TO FIG. 8A
WHEN FIG. 7 IS PROVIDED ON RACKS OTHER THAN A.E.R.
WIRE 1-1 TO FIG. 10.
- THESE TERMINALS ON BATT. STRIP CONN. PROVIDED ONLY
WHEN FUSES ARE ON AUXILIARY GROUP FUSE PANEL.
- FOR EXCHANGES WITH GROUP FUSE PANELS (OR AUXILIARY
GROUP FUSE PANELS) FIT FIG. 13 AND WIRING SHOWN
2-2 OR 3-3. FOR OTHER EXCHANGES FIT FIG. 3A
AND WIRING SHOWN 4-4 OR 0-0.
- USE WIRING SHOWN 4-4 OR 2-2. WHEN THIS
DIAGRAM IS USED WITH GBW 12301 OR GBW 15190 USE
WIRING SHOWN 5-5 OR 3-3 WHEN USED WITH
GBW 10981 OR GBW 15810.
- FOR FUSE ALARM ARRANGEMENTS R.E.R. SEE GBW 15340.
- FOR WIRING OF FIGS. 1 & 10 (ALSO FIG. 7 WHEN PROVIDED
ON RACKS OTHER THAN A.E.R.) SEE RELEVANT COMMON
SERVICES DIAGRAM.
- OTHER CONTACTS OF ALARM EXTENSION KEY ARE SHOWN
ON GBW 12301 OR GBW 15190 OR EQUIV.
- ALL WIRING UNLESS OTHERWISE SPECIFIED TO BE 0.7mm.
PLATE WIRING TO BE 0.5mm.
- WHEN 50V HORIZONTAL FUSE PANEL IS REQUIRED ON
A.E.R. I.E. WHEN R.E.R. IS FULLY EQUIPPED, USE FIG. 8B
AND ADD WIRING SHOWN THUS 6-6.
- THESE TERMINALS ARE REQUIRED ONLY WHEN KEY 'KAE'
IS EQUIPPED ON THE TEST RACK.

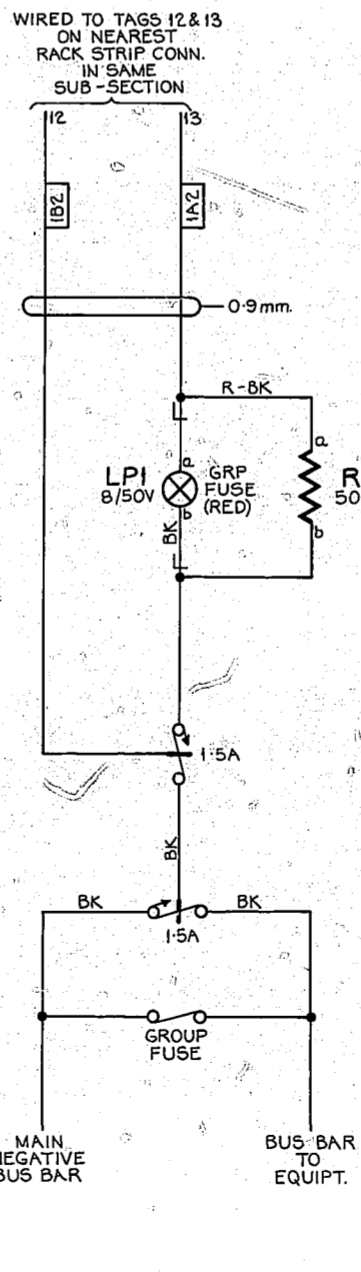


FIG. 9
GROUP FUSE ALARM

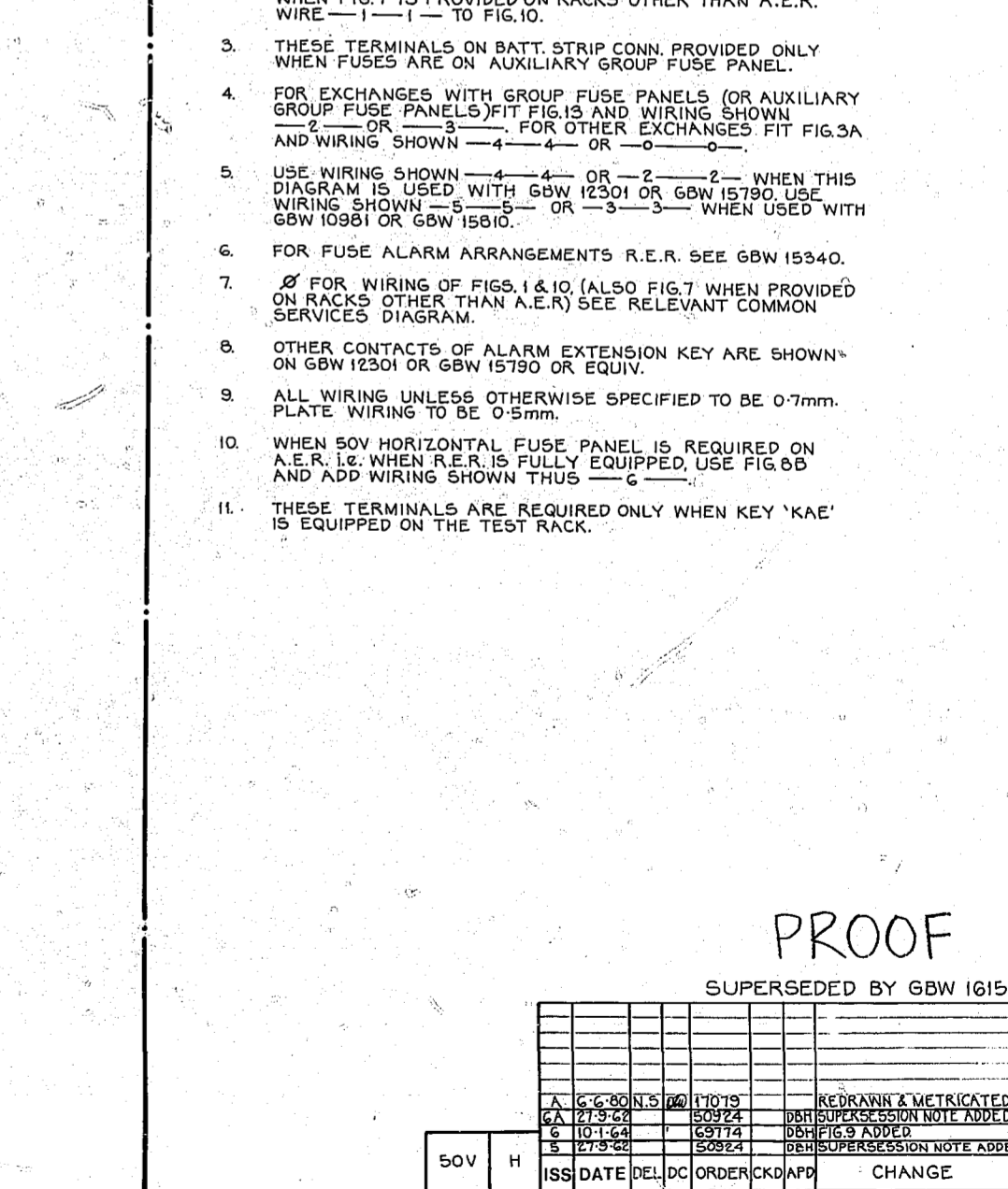


FIG. 11
FUSE ALARM RELAYS A.E.R.
PER RACK OTHER THAN A.E.R. OR R.E.R. WITH FUSE
PANELS TO FIG. 7

BATT & EARTH SEE FIG. 8A

**FUSE ALARM ARRANGEMENTS A.E.R.
FOR
EXCHANGES WITH R.E.R.**

PROOF
SUPERSEDED BY GBW 16150

REV	DATE	DESCRIPTION	BY	CHECKED
A	6-6-60	N.S. 1019	REDRANN & METRICATED	
B	10-1-64	6974	DBH SUPERSESSION NOTE ADDED	
C	10-1-64	6974	DBH SUPERSESSION NOTE ADDED	
D	27-3-62	50824	DBH SUPERSESSION NOTE ADDED	
ISS DATE DEL DC ORDER CKD APP CHANGE				
DRN: T-EQPT		CKD	ORIGIN: T-EQPT	
TCO: N.S.		APPD	STANDARD: ATW 22001	
NZPO ENGINEER-IN-CHIEF, WELLINGTON				
1 OF 1 A1 GBW 15370				