

0
5 Centimetres
10
15
20
25
30

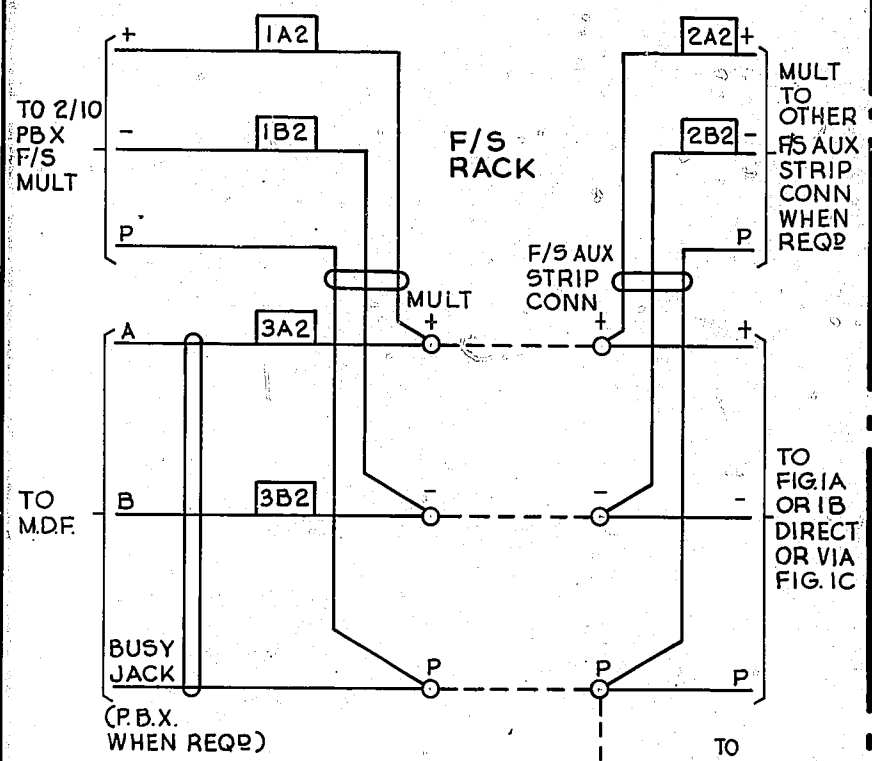


FIG. 3

SUBS UNI-DIRECTIONAL
11-15 P.B.X. SERVICE
TRAFFIC TO SUBS

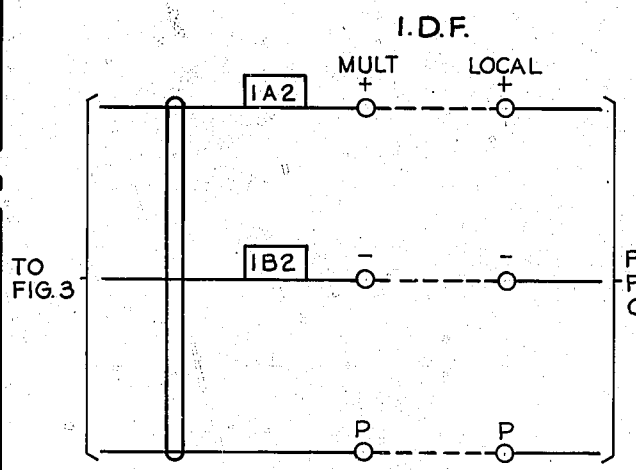
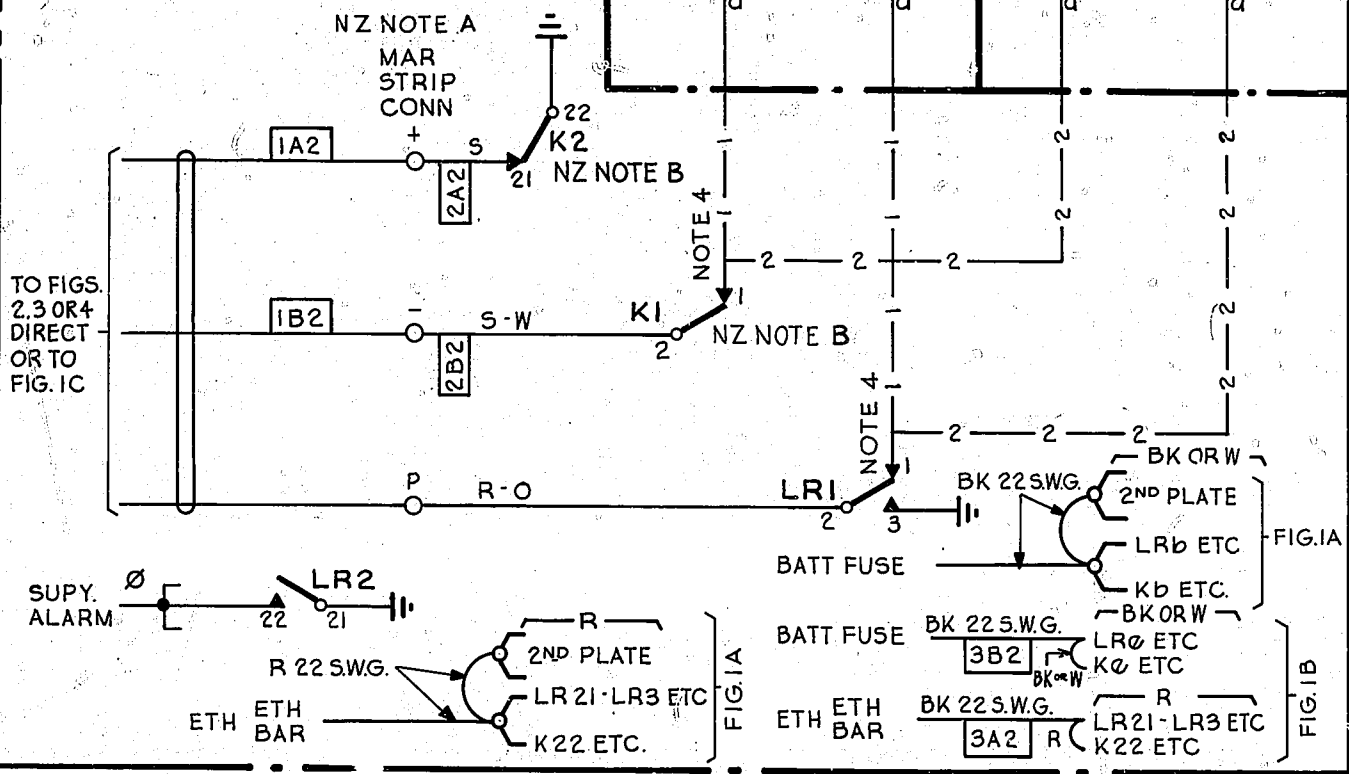


FIG. 1C NOTE 5

SUBS UNI-DIRECTIONAL
11-15 P.B.X. SERVICE
TRAFFIC TO SUBS

FIG. 1A 600 TYPE RELAYS
FIG. 1B 3000 TYPE RELAYS

M.A.R. TRAFFIC FROM
EXCH TO SUBSCRIBER



PART OF
FIG. 1B

PART OF
FIG. 1A

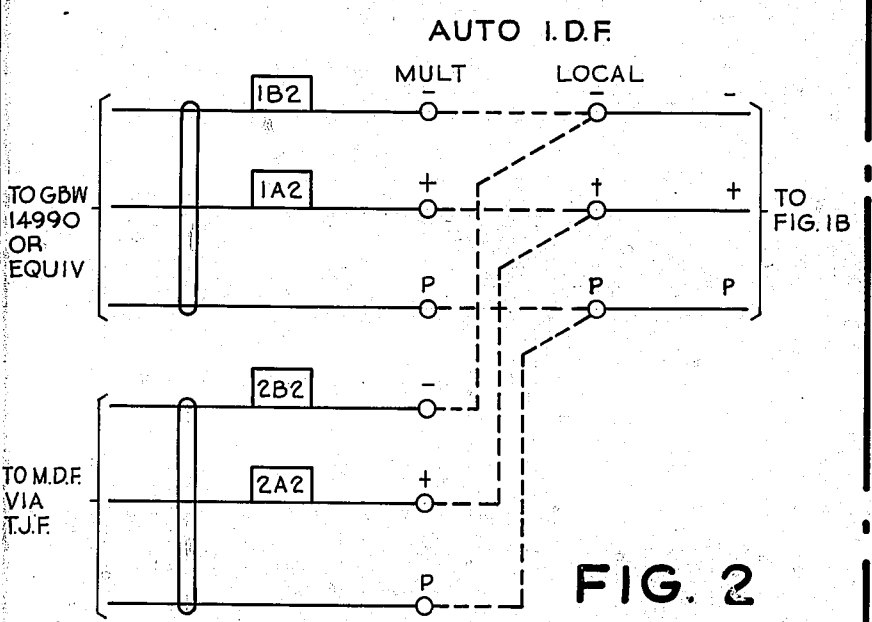


FIG. 2

UNI-DIRECTIONAL LINE
EMERGENCY SERVICE
ACCESS ONLY

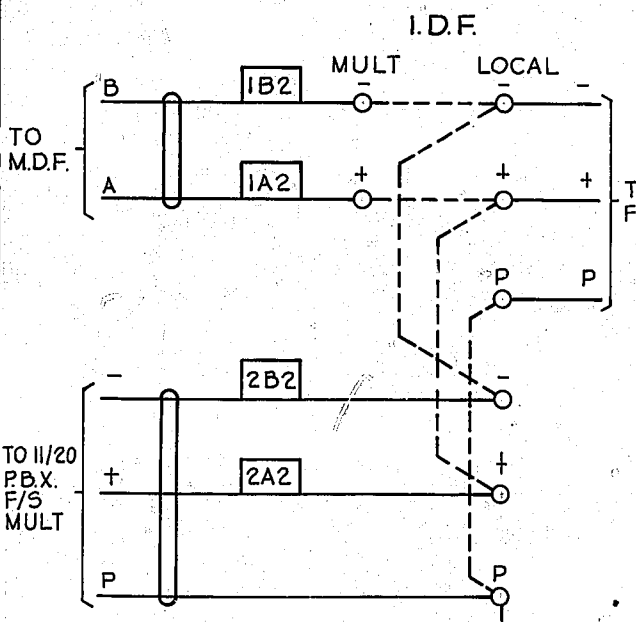


FIG. 4

SUBS UNI-DIRECTIONAL
11 & OVER P.B.X. SERVICE
TRAFFIC TO SUBS

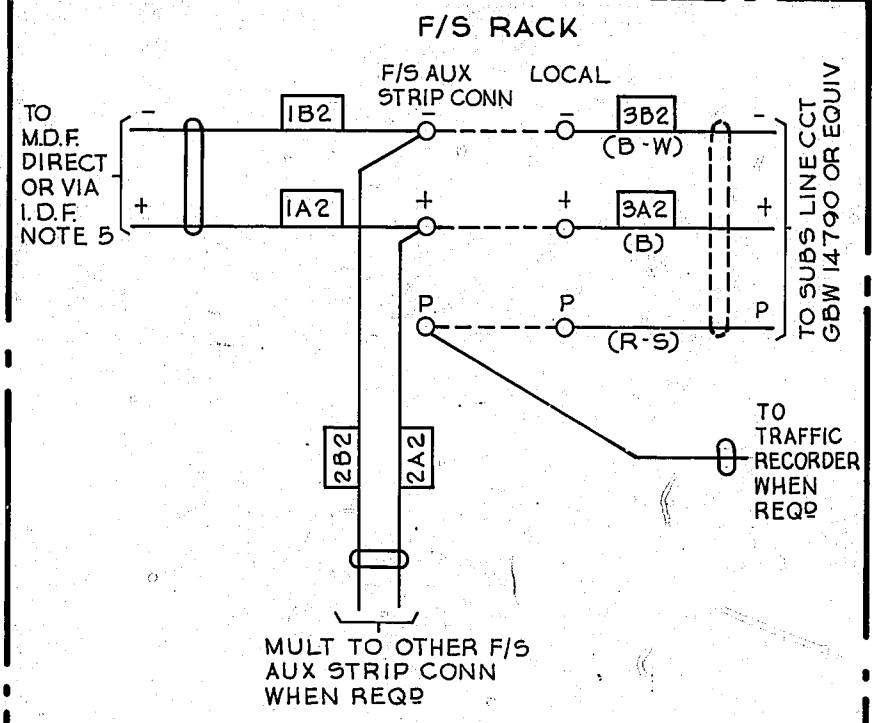


FIG. 5

SUBS UNI-DIRECTIONAL LINE
11-15 P.B.X. SERVICE
TRAFFIC TO EXCHANGE

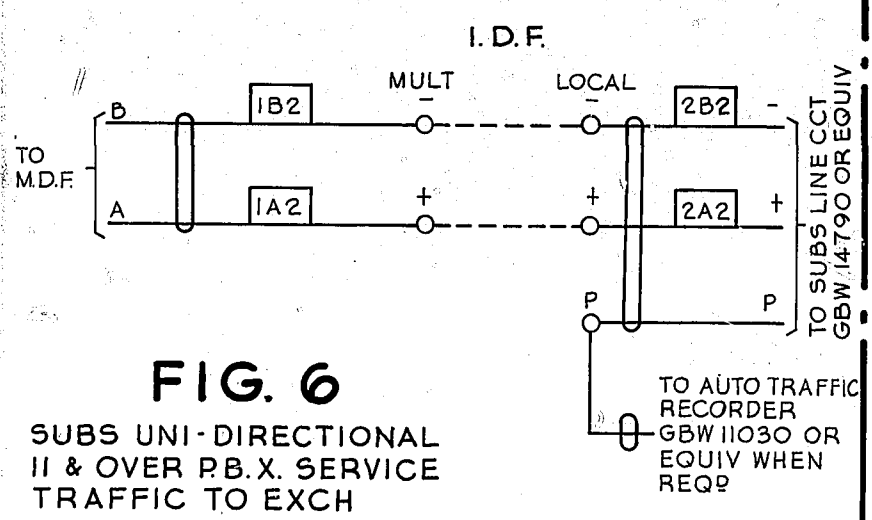


FIG. 6

SUBS UNI-DIRECTIONAL
11 & OVER P.B.X. SERVICE
TRAFFIC TO EXCH

NOTES

1. FUSE : 1.5A PER 20 CCTS (FIGS. 1A & 1B)
2. Ø FOR WIRING SEE GBW 10690 OR EQUIV
3. ALL WIRING TO BE 25 S.W.G. UNLESS OTHERWISE SPECIFIED
4. WHEN 3000 TYPE RELAYS ARE USED, PROVIDE WIRING SHOWN THUS — 1 — & OMIT WIRING SHOWN THUS — 2 — WHEN 600 TYPE RELAYS ARE USED PROVIDE WIRING SHOWN THUS — 2 — & OMIT WIRING SHOWN THUS — 1 —
5. FIG. 1C & I.D.F. ROUTING OF FIG. 5 ARE REQD ONLY WHEN THE NUMBER OF FIGS. 1A OR 1B CCTS PROVIDING 11-15 P.B.X. SERVICE EXCEEDS 40

NZ NOTES

- A. WHEN RELAY ARE PROVIDED FROM LOCAL RESOURCES M.A.R. STRIP CONNECTION TERMINATIONS MAY BE OMITTED.
- B. WHEN CCT ASSOCIATED WITH A PABX EXCH. LINE CCT. GBW 15220 OR EQUIV. THE EARTH IS TO BE REMOVED OFF K2 (FIG. 1A, 1B).

NZ NOTE B ADDED	(54272)	7D	23-7-84	GCG	
RETRACED	(83784)	7C	29-7-74	B5H	
REPLACEMENT TCG INCORP	(99917)	7B	14-9-73	B5H	
NZ NOTE A ADDED	(81672)	7A	30-11-67	D.B.	
FIG. 5 CABLING TO SUBS LINE MODIFIED	(91426)	7.	2-12-64	D.B.H.	
AMENDMENT PARTICULARS			ISSUE DATE	APPD REF	
NZPO					
AT & E CO LTD LIVERPOOL	T512 RCDS W.L.B.	APPROVED N.H.R.	DRAWN K.M.	CHECKED RKL.24.57	WIRING R.K.L.
				CIRCUIT H.B.	

**SUBSCRIBERS
UNI-DIRECTIONAL LINES
3000 TYPE OR 600 TYPE
RELAYS**

GBW 15040