

FIG. 1A

M.A.R. AUXILIARY RELAY

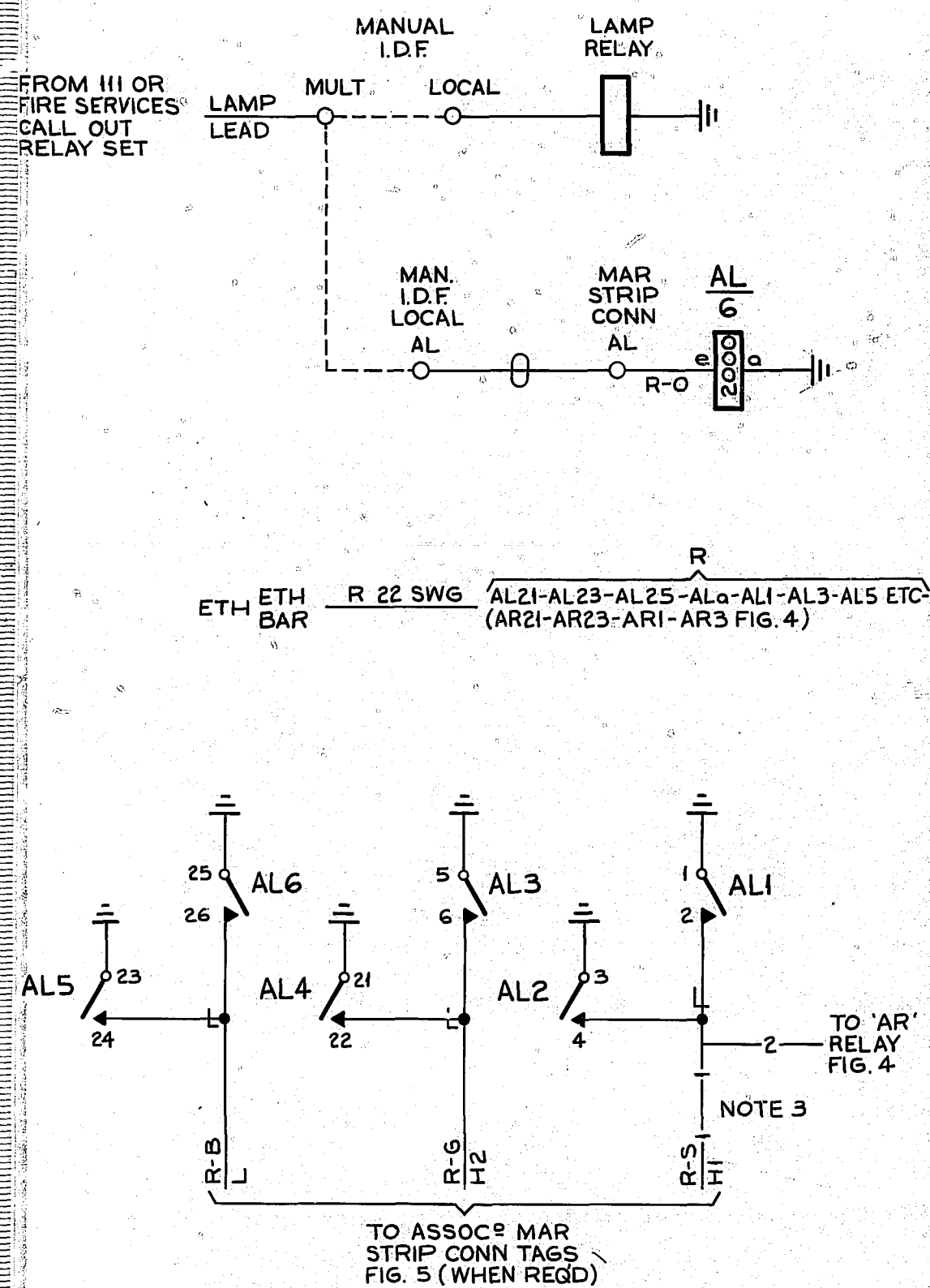


FIG. 1B

M.A.R. AUXILIARY RELAY

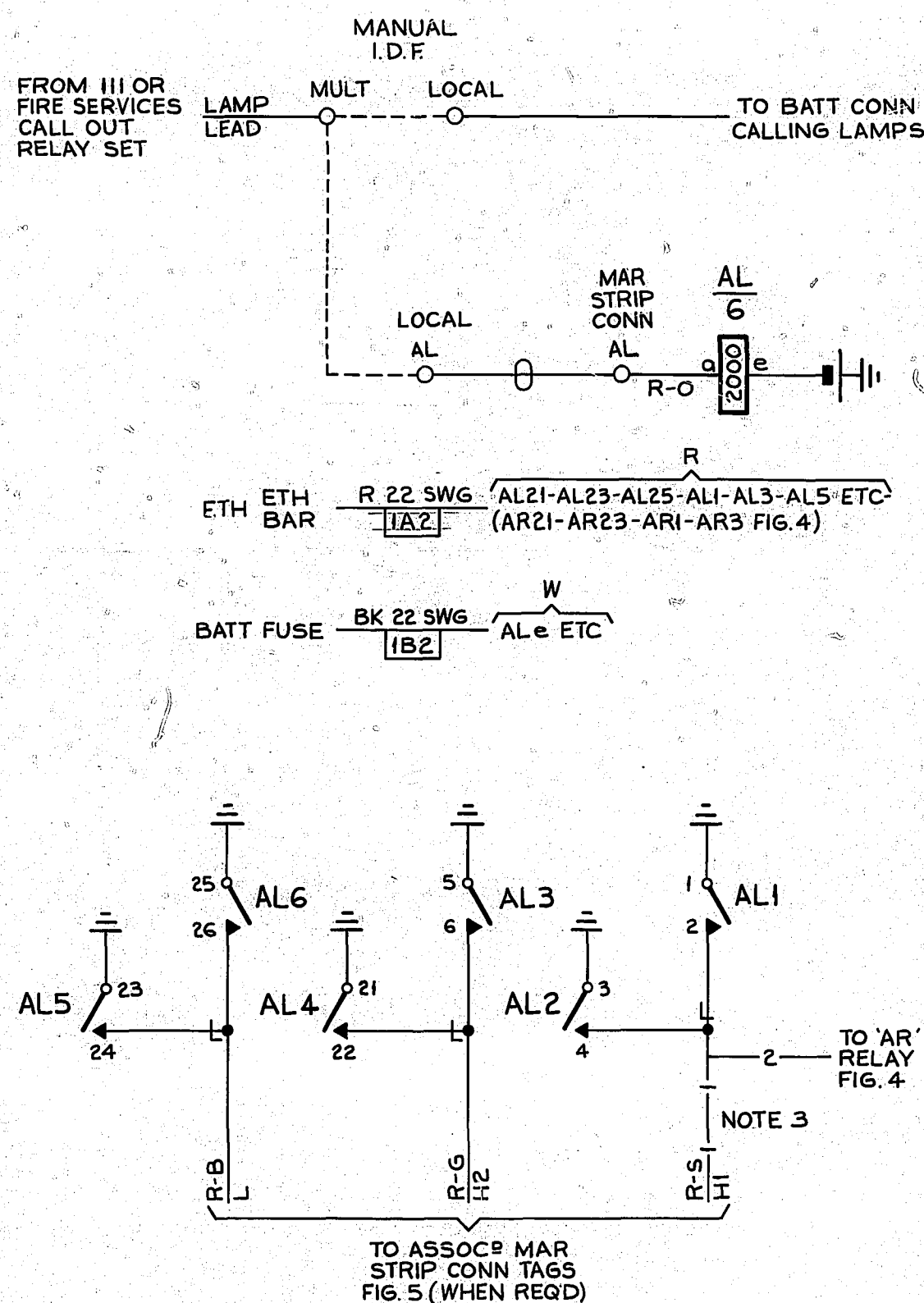


FIG. 3

MANUAL BOARD ALARM LAMP

1 PER EXCH

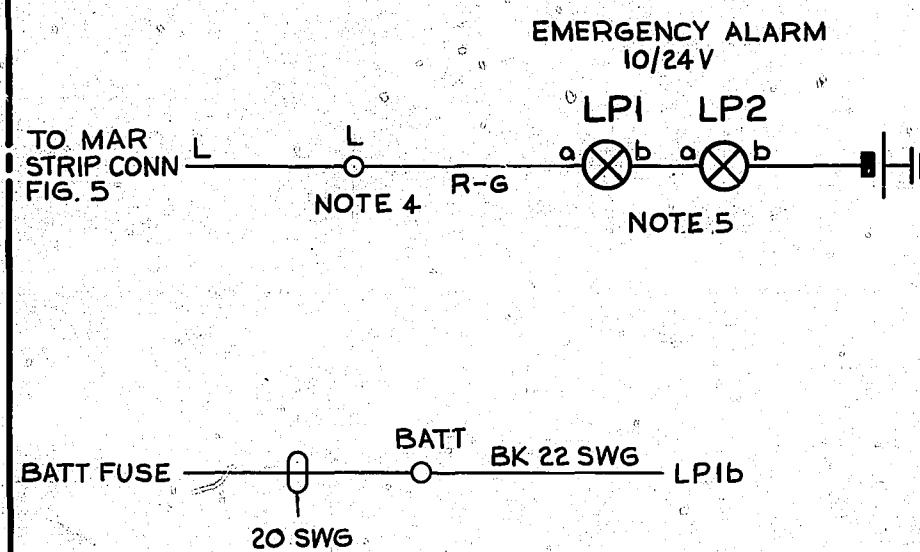
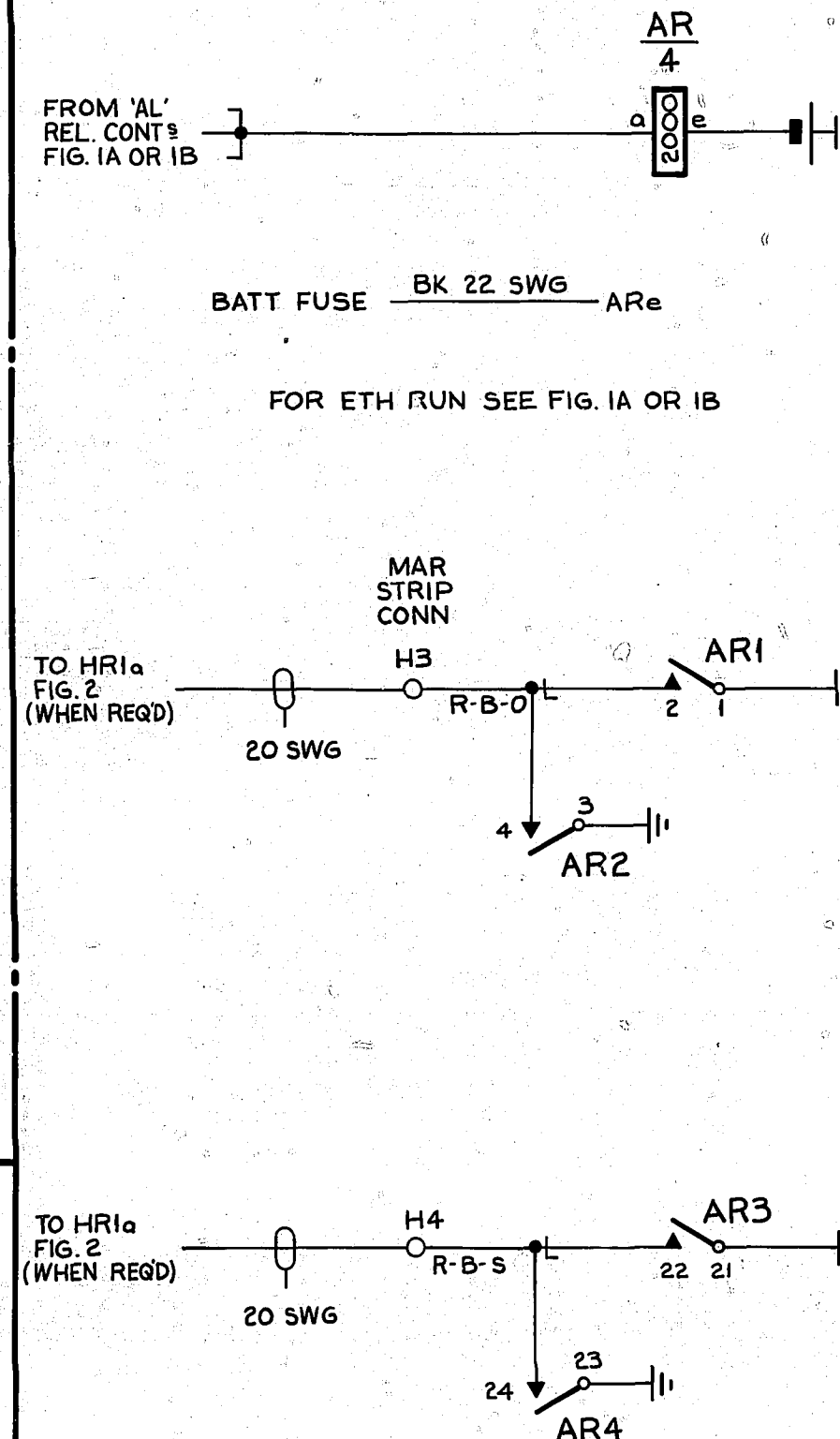


FIG. 4

M.A.R. EXTENSION HOOTERS

FITTED WHEN MORE THAN TWO HOOTERS ARE REQ'D



NOTE 4

FIG. 5

M.A.R. STRIP CONN

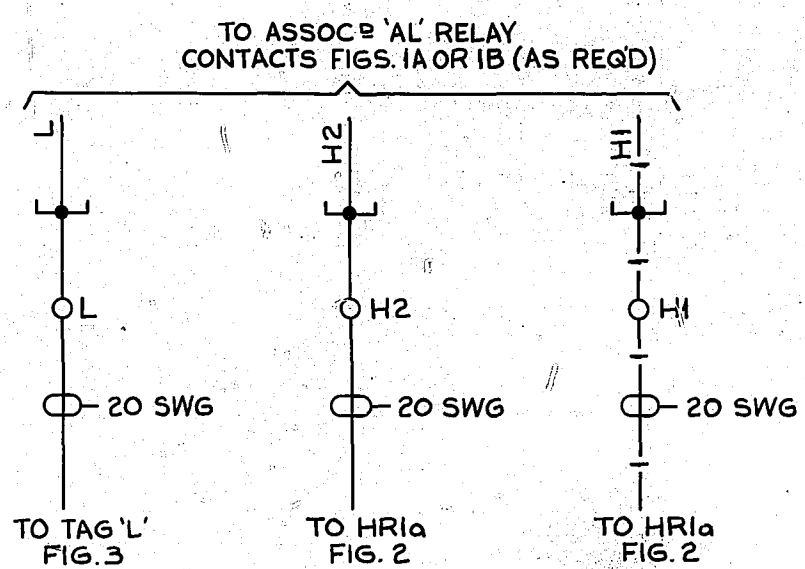
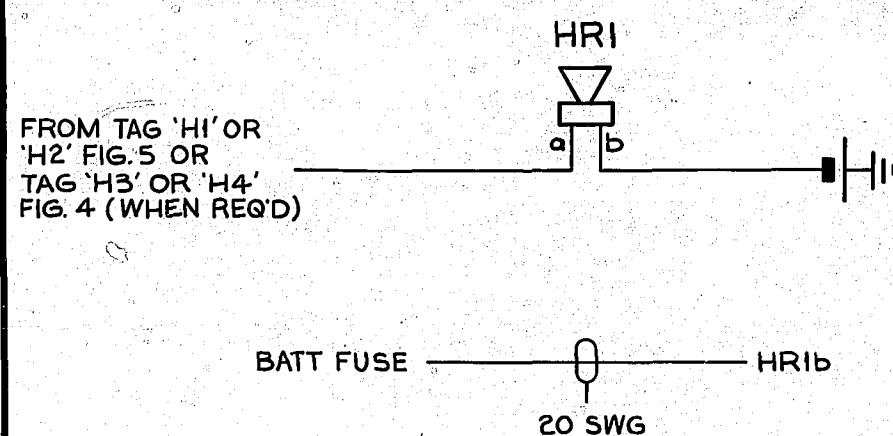


FIG. 2

HOOTER MOUNTED IN ACCORDANCE WITH LOCAL REQUIREMENTS



NOTES :-

1. FUSE FIG. 1B :- 1.5A PER 5 CCTS.
FIG. 2 :- 1.5A PER HOOTER.
FIG. 3 :- 1.5A PER CCT.
FIG. 4 :- 1.5A PER CCT.
FIG. 6B :- 1.5A PER 5 CCTS.
2. ALL WIRING TO BE 25 SWG UNLESS OTHERWISE SPECIFIED.
3. WHEN FIG. 4 IS REQUIRED ADD WIRING SHOWN THUS — 2 — & OMIT WIRING & CABLING SHOWN THUS — 1 —.
4. IN SOME EXCHANGES THE MANUAL SWITCHBOARD IS SITUATED IN A BUILDING REMOTE FROM THE AUTO EQUIPMENT BUILDING & IN SUCH CASES THE CONNEXIONS BETWEEN THE M.A.R. STRIP CONN. & THE MANUAL BOARD STRIP CONN ARE CABLED VIA THE I.D.F. MULT &/OR LOCAL (AUTO BUILDING) & A MANUAL ROOM FRAME (MANUAL BUILDING).
5. ON SOME EARLY EQUIPMENT ALARM LAMP LPI, FIG. 3 WAS USED AND COMPRISED OF THREE 12/50V OR 8/50V LAMPS IN PARALLEL.

RETRACED & LP2 ADDED TO FIG. 3 AND NOTE 5 AMENDED (122849)				7B	5-4-74	B.S.H.	EMERGENCY SERVICES AUXILIARY RELAYS & ALARMS			
FIGS. 6A, 6B, 7 AND 8 DELETED (30515)				7A	13-9-72	B.S.H.				
NOTE 5 ADDED (8440)				7	29-4-71	B.S.H.				
AMENDMENT PARTICULARS				ISS	DATE	APD		REF:-		
NZPO							SIZE	A2	50V	H
DRAWN G.S.							CHECKED E.J.D.	WIRING E.J.D.	CIRCUIT	
GBW 14970										