

FIG. 1A.
FUSE ALARM

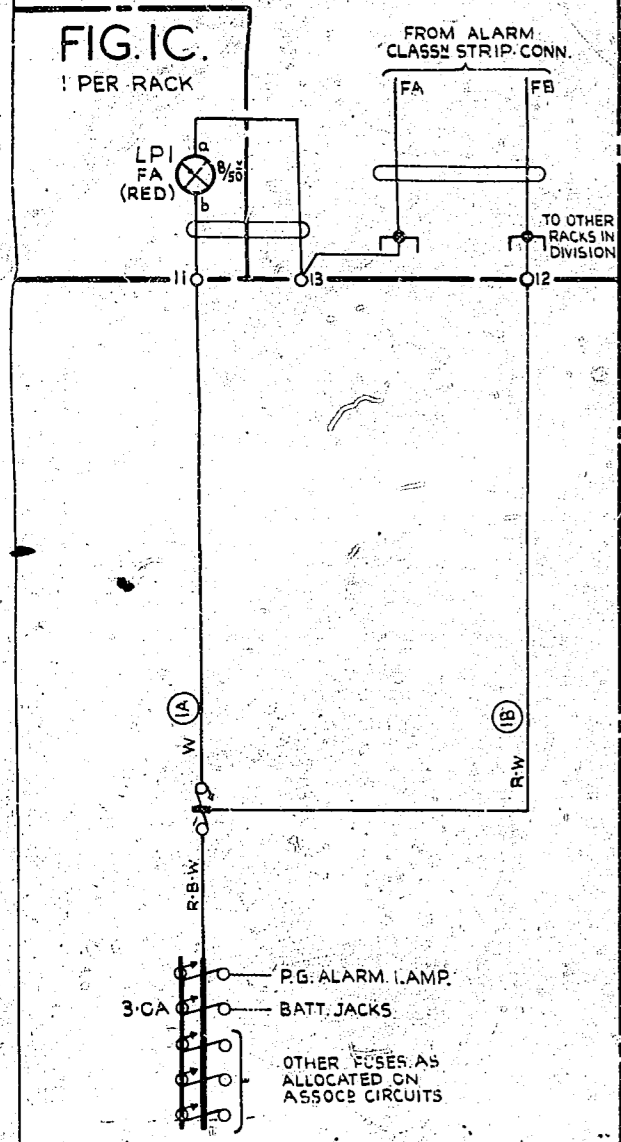


FIG. 2.
BATTERY JACKS.
1 PER RACK

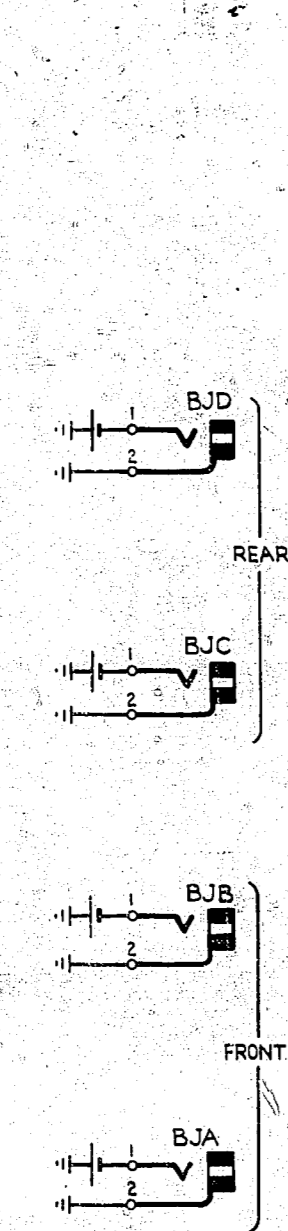


FIG. 1B.
1 PER RACK

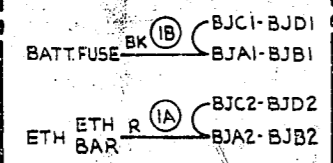


FIG. 3.
LR RELAY DISCONNECT KEYS
1 PER RACK
(1 CONTACT PER SHELF)

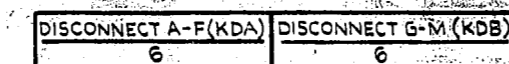
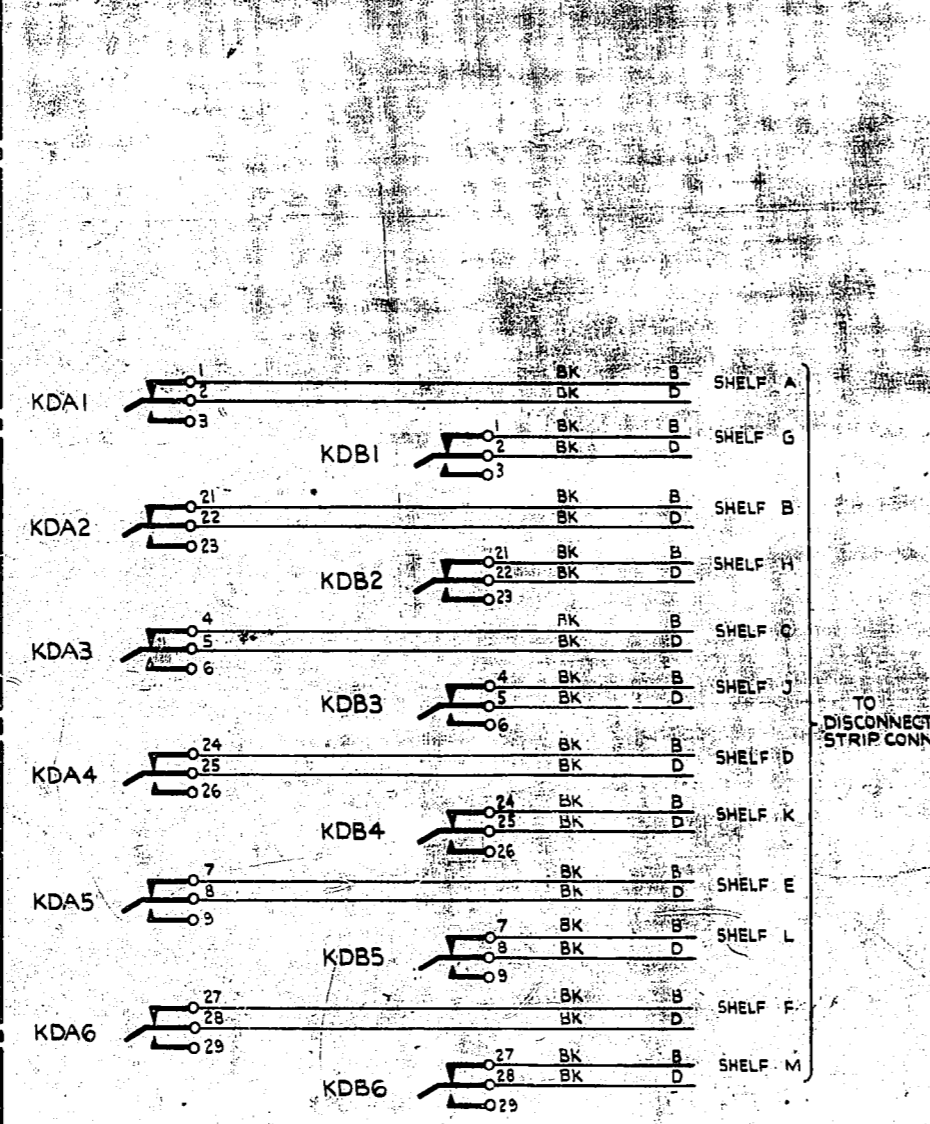


FIG. 6A.
PG ALARM

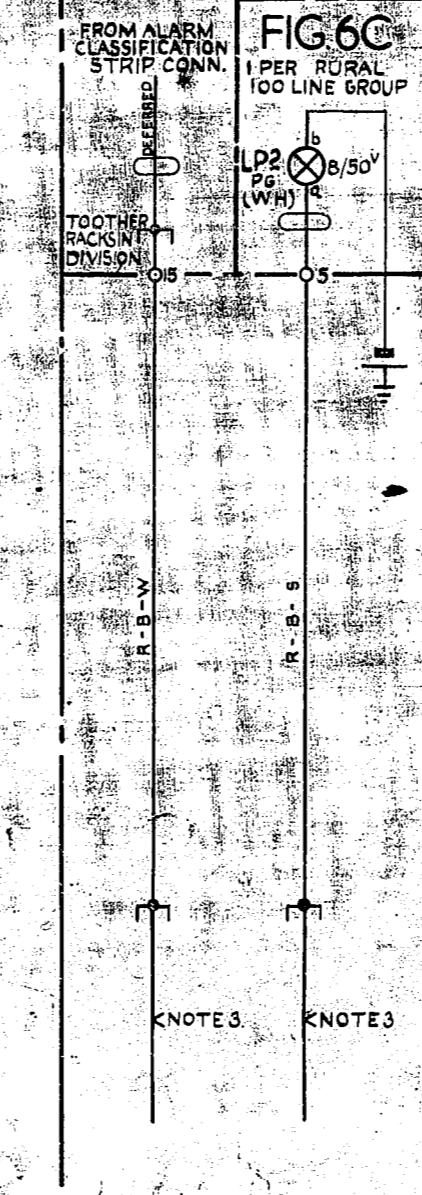


FIG. 6B.
1 PER RURAL
100 LINE GROUP

FIG. 7A.
LATE CHOICE CALL
UNIT METER



FIG. 7B.
1 PER GRADING

- NOTES**
1. ALL FUSES NOT OTHERWISE SPECIFIED TO BE 15A.
 2. UNLESS OTHERWISE SPECIFIED ALL TAGS ARE ON RACK MISG STRIP CONN.
 3. FOR THE TERMINATION OF THESE LEADS SEE ASSOCIATED SHELF JACK WIRING DIAGRAMS.
 4. EXCEPT WHERE OTHERWISE SPECIFIED ALL RACK WIRING BEARING A COLOUR CODE TO BE 22S.W.G. PLATE WIRING TO BE 25 SWG.

REPLACEMENT TCG INCORP (99920)	3	24.9.73	B.S.H.	COMMON SERVICES RACK WIRING UNISELECTOR & LR&K RELAYS
FIGS. 7A & 7B ADDED (CO. 7150) D.B. (94412)	3	13.1.65	AMC	
(COT084)				
FIGS. 4A & 5 AND ASSOCIATED NOTE DELETED	2	24.3.58	NRB	
	1	6.6.56	CK	
AMENDMENT PARTICULARS	ISSUE DATE	APP. REF.	SIZE	L 50
NZPO				GBW 4810
AT&C LTD. (LONDON) APPROVED	DRAWN	CHECKED	WIRING	CIRCUIT
LIVERPOOL: J.H. NR	RM	5/7/74	5.5	