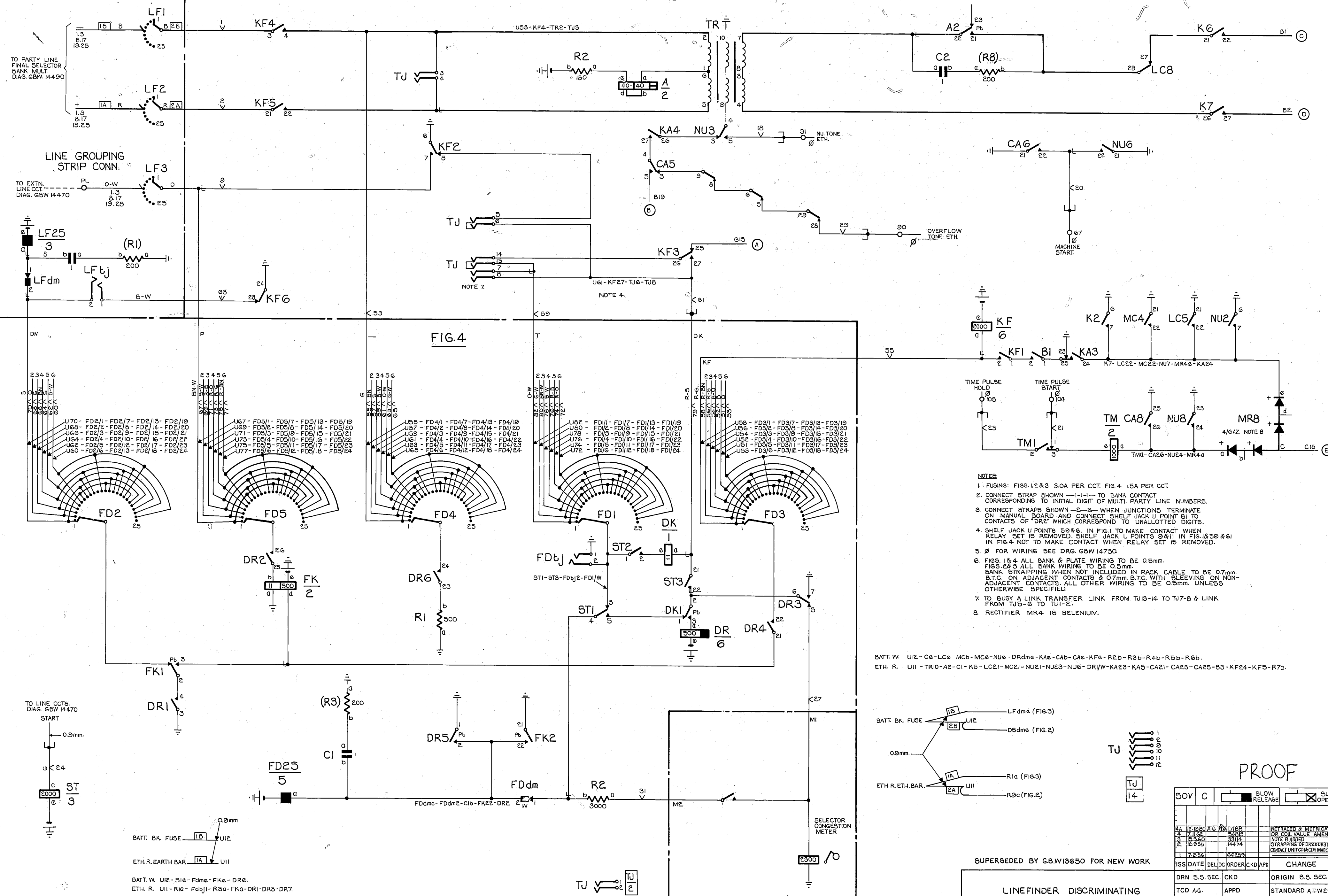


FIG.3

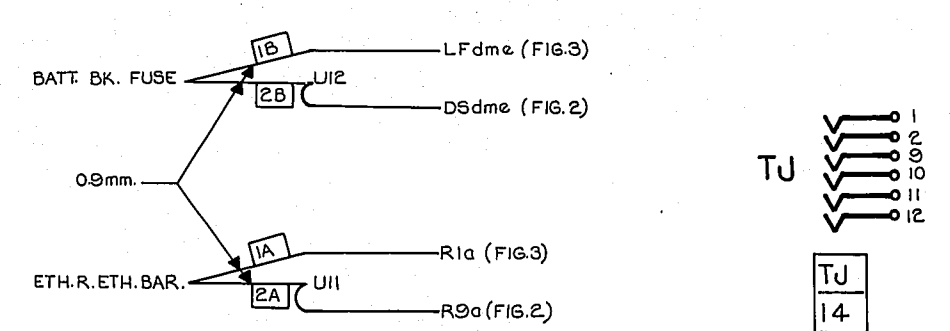
FIG.1

FIG.4



- NOTES:
1. FUSING: FIGS.1,2 & 3 3.0A PER CCT. FIG.4 1.5A PER CCT.
  2. CONNECT STRAP SHOWN -1-1- TO BANK CONTACT CORRESPONDING TO INITIAL DIGIT OF MULTI-PARTY LINE NUMBERS.
  3. CONNECT STRAPS SHOWN -2-2- WHEN JUNCTIONS TERMINATE ON MANUAL BOARD AND CONNECT SHELF JACK U POINT B1 TO CONTACTS OF "DR" WHICH CORRESPOND TO UNALLOTTED DIGITS.
  4. SHELF JACK U POINTS 50 & 61 IN FIG.1 TO MAKE CONTACT WHEN RELAY SET IS REMOVED. SHELF JACK U POINTS 50 & 61 IN FIG.4 NOT TO MAKE CONTACT WHEN RELAY SET IS REMOVED.
  5. Ø FOR WIRING SEE DRG. GBW 14730.
  6. FIGS. 1 & 4 ALL BANK & PLATE WIRING TO BE 0.5mm. FIGS. 2 & 3 ALL BANK WIRING TO BE 0.5mm. BANK STRAPPING WHEN NOT INCLUDED IN RACK CABLE TO BE 0.7mm. B.T.C. ON ADJACENT CONTACTS & 0.7mm B.T.C. WITH SLEEVING ON NON-ADJACENT CONTACTS. ALL OTHER WIRING TO BE 0.5mm UNLESS OTHERWISE SPECIFIED.
  7. TO BUSY A LINK TRANSFER LINK FROM TJ13-14 TO TJ7-8 & LINK FROM TJ3-6 TO TJ1-2.
  8. RECTIFIER MR4 IS SELENIUM.

BATT. W. U12 - C2 - LC2 - MC2 - NU2 - DRdm - KA2 - CA2 - KF2 - R2b - R3b - R4b - R5b - R6b.  
 ETH. R. U11 - TR10-A2 - C1 - K5 - LC21 - MC21 - NU21 - NU23 - NU6 - DR1/W - KA23 - KA5 - CA21 - CA23 - CA25 - B3 - KF24 - KF5 - R70.



PROOF

SUPERSEDED BY G.B.W13650 FOR NEW WORK

LINEFINDER DISCRIMINATING  
 SELR. REPEATER & ALLOTTER CIRCUIT  
 U.A.X.N.Z. 13R

50V	C	<input type="checkbox"/> SLOW RELEASE	<input checked="" type="checkbox"/> SLOW OPERATE
1	2	3	4
14	15	16	17
18	19	20	21
22	23	24	25
26	27	28	29
30	31	32	33
34	35	36	37
38	39	40	41
42	43	44	45
46	47	48	49
50	51	52	53
54	55	56	57
58	59	60	61
62	63	64	65
66	67	68	69
70	71	72	73
74	75	76	77
78	79	80	81
82	83	84	85
86	87	88	89
90	91	92	93
94	95	96	97
98	99	100	

TO PARTY LINE FINAL SELR.  
CCT. DIAG. GBW 14480

TO B/W JUNC. RELAY SET  
DIAG. GBW 14510  
FOR ATTACHED UNITS ONLY  
TO TERM. RELAY SET VIA  
U.A.X. ISC MULT. I.D.F. JUNC.  
TERMS. VERTICAL NO. 5

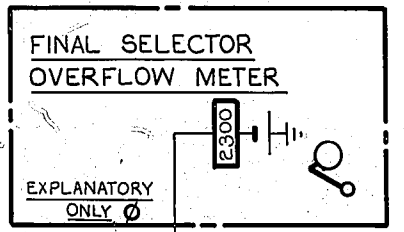
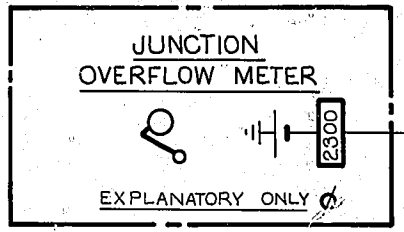


FIG. 2

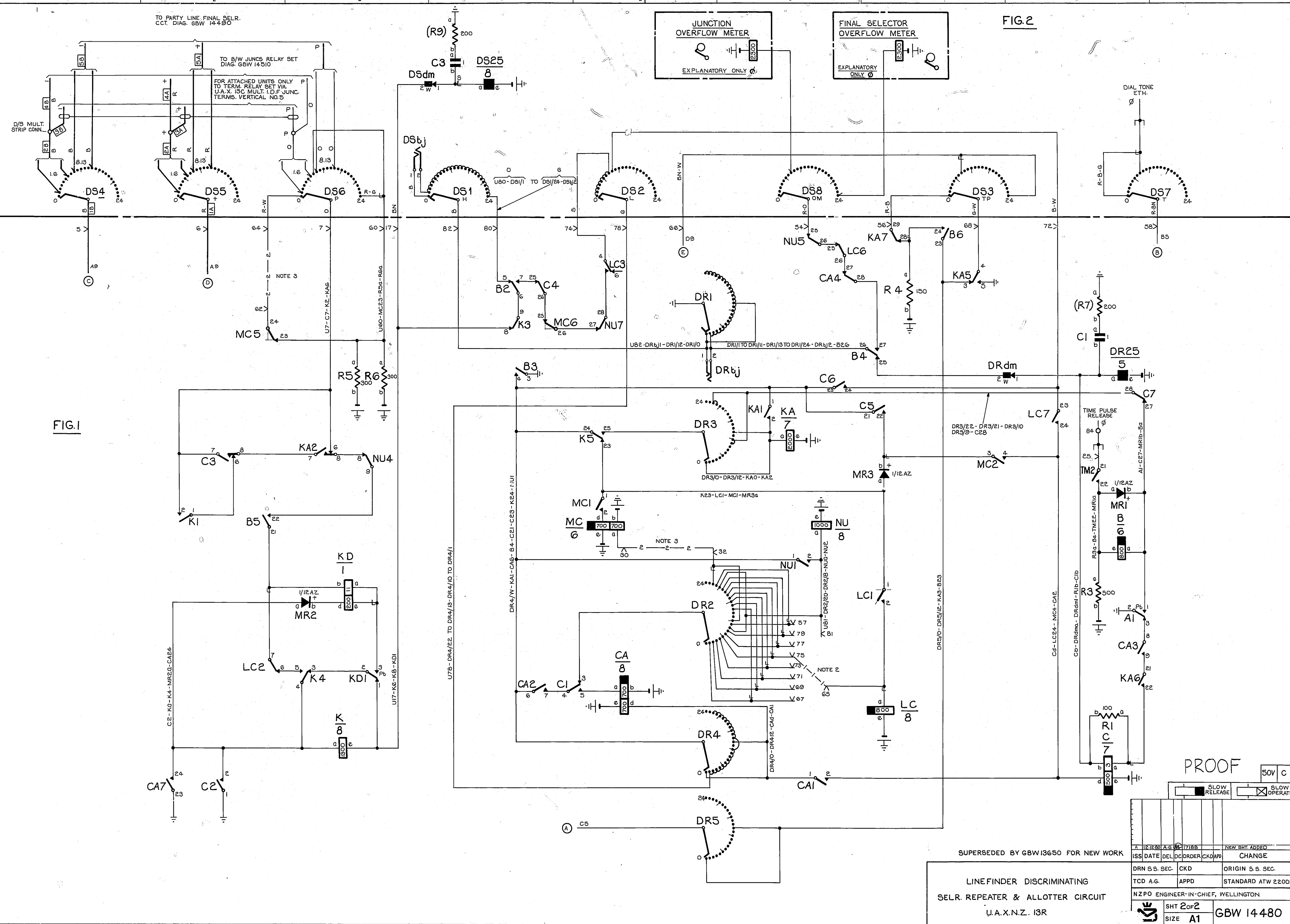


FIG. 1

PROOF

SUPERSEDED BY GBW13650 FOR NEW WORK

LINEFINDER DISCRIMINATING  
SELR. REPEATER & ALLOTTER CIRCUIT  
U.A.X.N.Z. 13R

ISS DATE	DEL	DC	ORDER	CKD	APP	CHANGE
DRN S.S. SEC.	CKD	ORIGIN S.S. SEC.	TCD A.G.	APPD	STANDARD ATW 22001	
NZPO ENGINEER-IN-CHIEF, WELLINGTON						
SHT 2 of 2						
SIZE A1						GBW 14480

UD 237

