

FIG. 2F
INCOMING LINE TO 5 PARTY RELAY SET

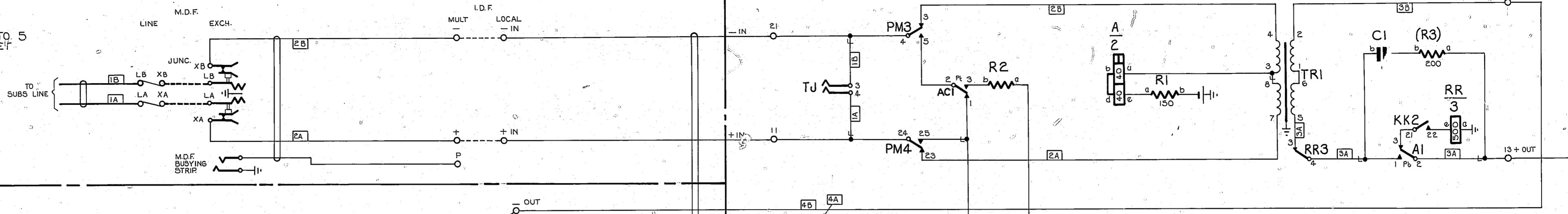


FIG. 2A
1ST. NUMBER OF A 5 PARTY LINE GROUP

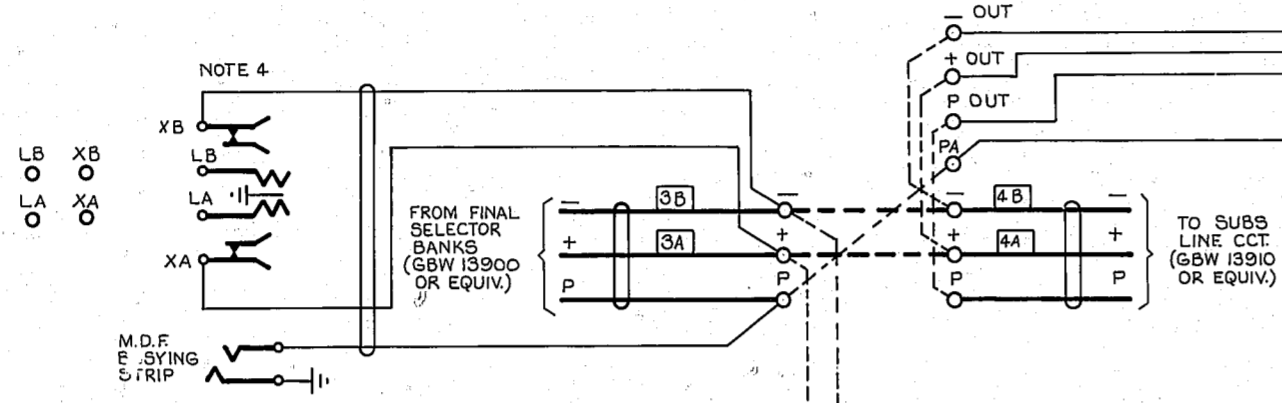
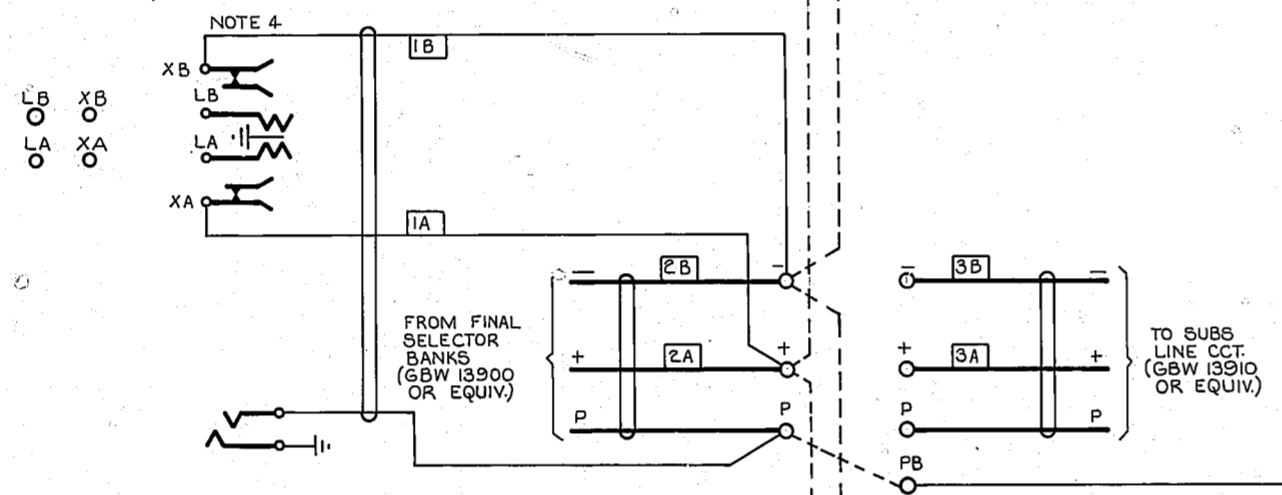


FIG. 2B
2ND NUMBER OF A 5 PARTY LINE GROUP



- NOTES:
1. FUSING 1.5 PER CCT.
 2. UNLESS OTHERWISE INDICATED ALL TERMINALS ARE ON STRIP CONNECTION AT REAR AND ARE DESIGNATED SC IN WIRING RUNS.
 3. LOCAL PLATE WIRING TO BE 0.5mm
 4. HEAT COILS ARE NOT TO BE FITTED IN ARRESTERS ASSOCIATED WITH 5 PARTY LINE MULTIPLE NUMBERS.

FIG. 2C
3RD NUMBER OF A 5 PARTY LINE GROUP

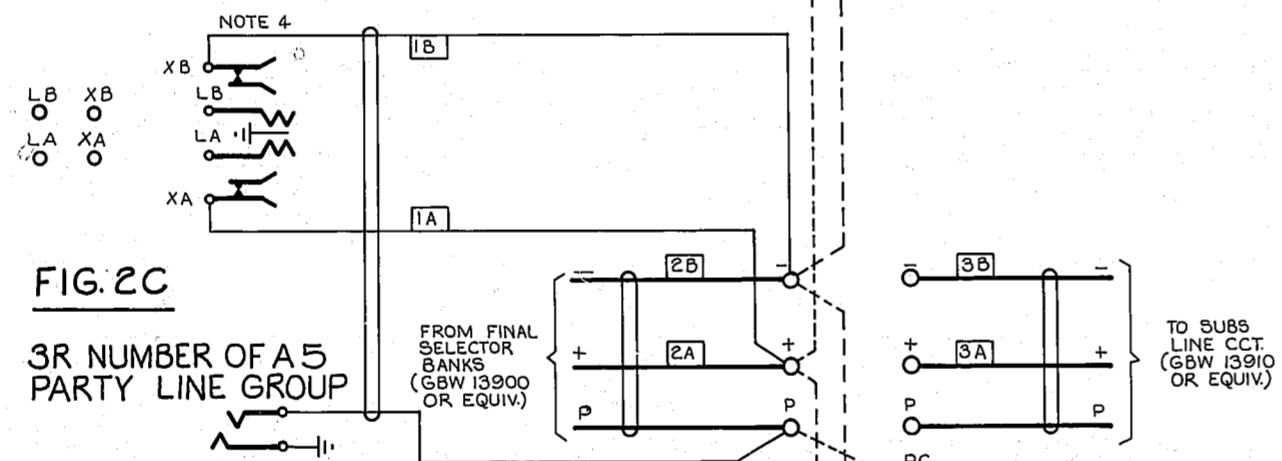


FIG. 2D
4TH NUMBER OF A 5 PARTY LINE GROUP

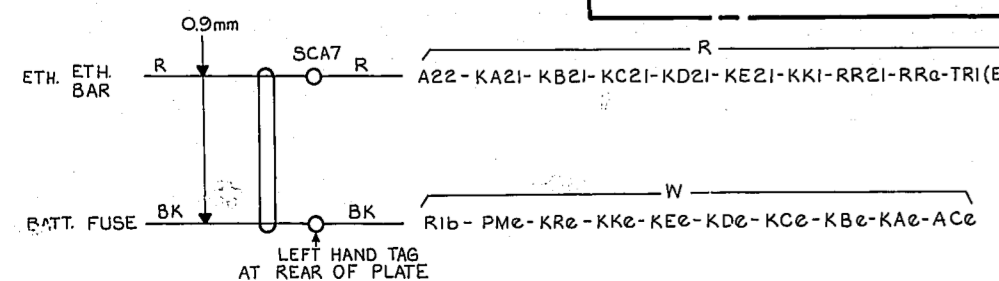
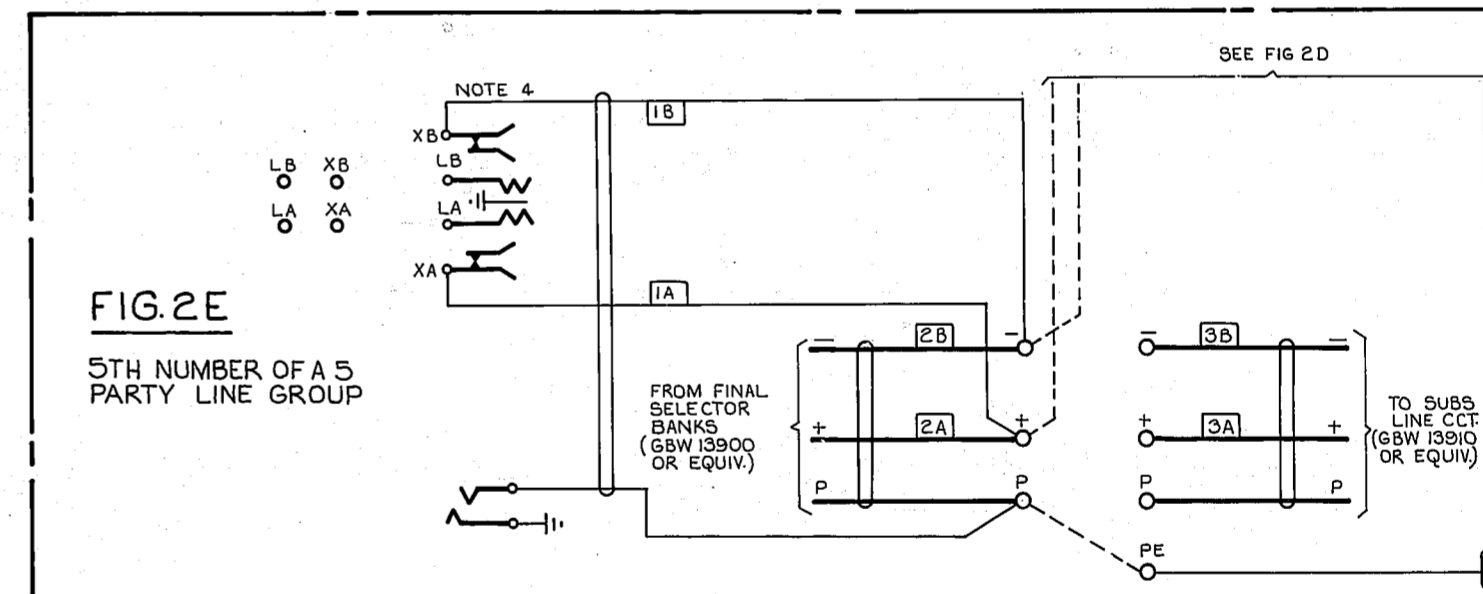
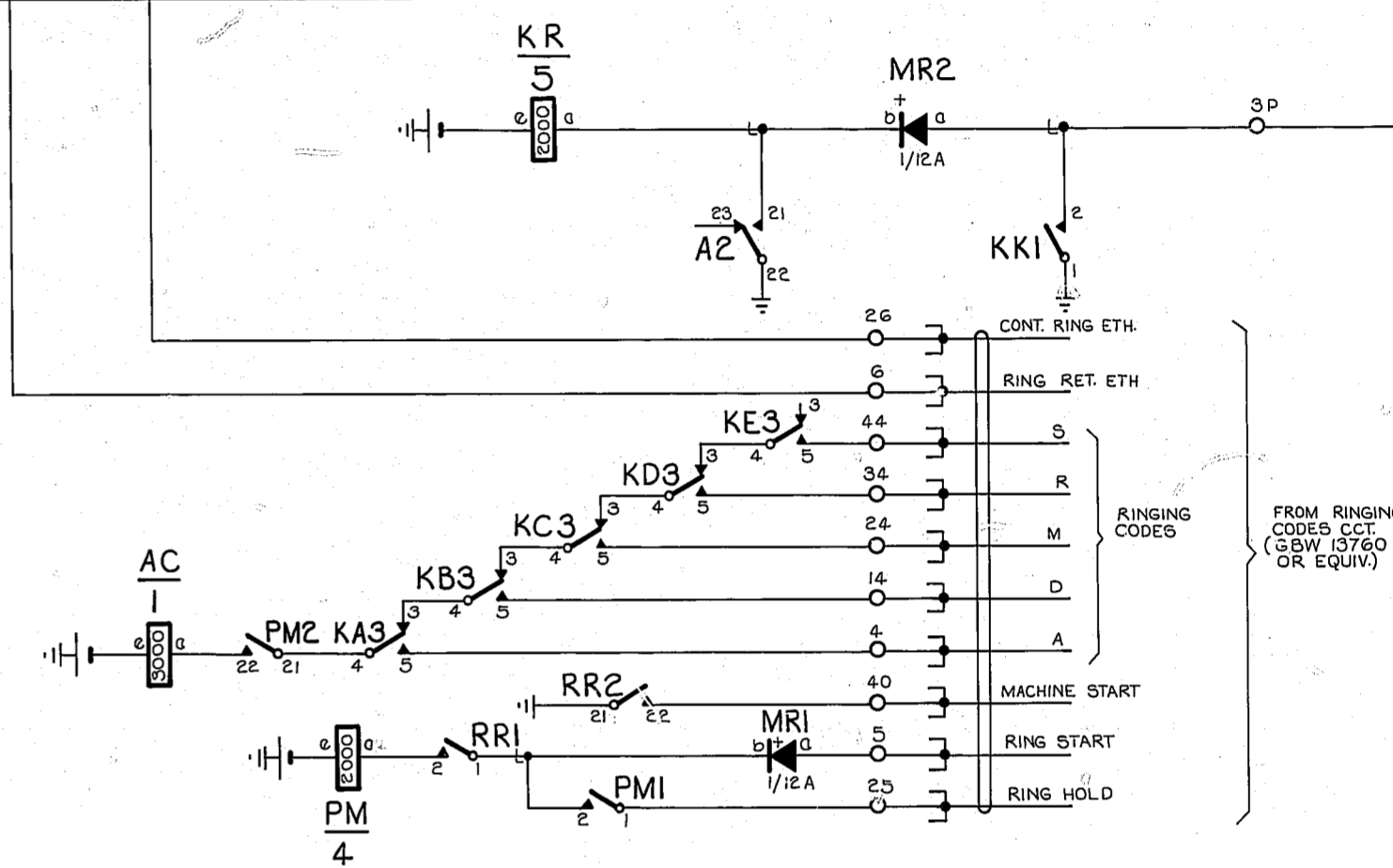
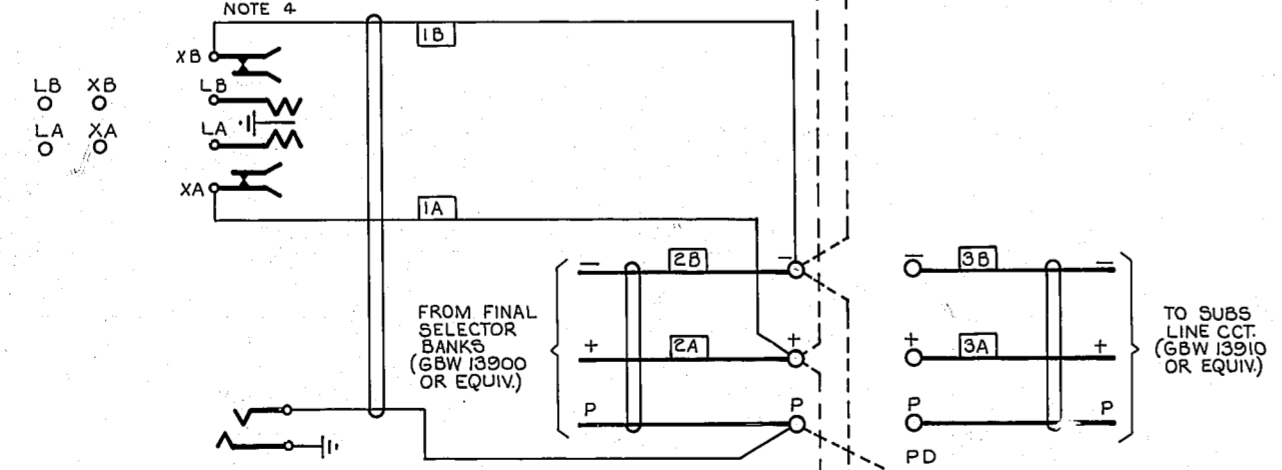
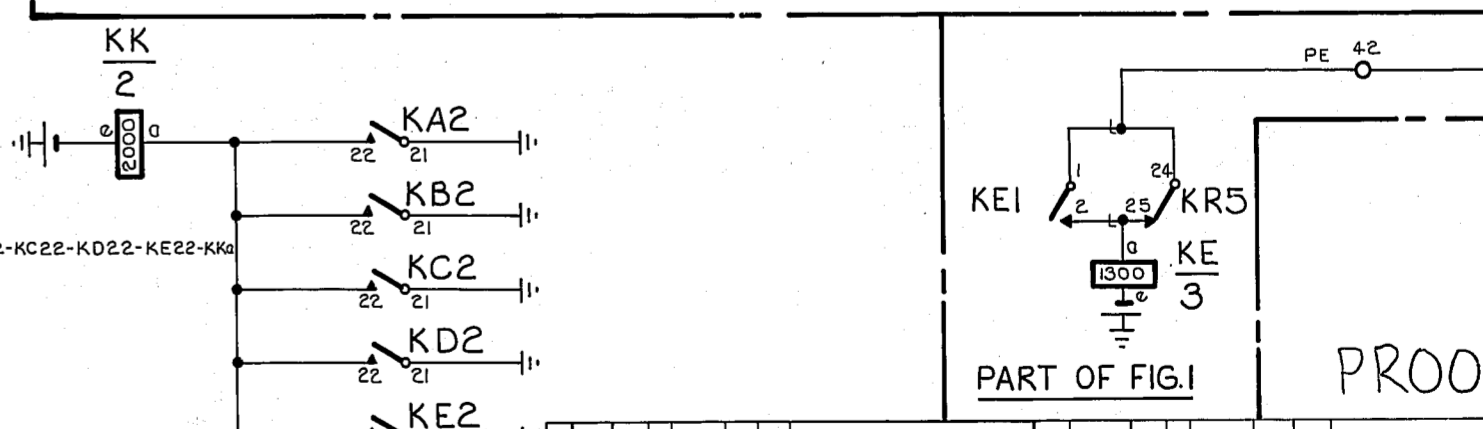


FIG. 2G
4TH NUMBER OF A 5 PARTY LINE GROUP



PART OF FIG. 1

PROOF

ISS DATE	DEL DC ORDER	CKD	APPD	CHANGE	ISS DATE	DEL DC ORDER	CKD	APPD	CHANGE
2.12.80	AG	W	17/82						
4.25.85			65391						
3.5.7.55			65120						
2.1.4.55			42361						

RETACED & METRICATED.
FIG. 2A-E REF. GBW 13760
AMD. TO GBW 13900.
FIG. 2A-F & FIG. 2G WERE IMPROVED
FIG. 2F WAS PART OF FIG. 2A AND FIG. 2A
FIG. 2A CONTAINING RET. ETH.
TRIG. N° AMD.
FIG. 2A: L.D.F. N° AMD.

DRN S.S. SECT.	CKD	ORIGIN S.S. SECT.
TCD A.G.	APPD	STANDARD ATW 22001

NZ P.O. ENGINEER-IN-CHIEF, WELLINGTON.

SHT 1 of 1	GBW 14.410
SIZE A1	

U.A.X. N.Z. 13
LINE RELAY SET R
5 PARTY LB LINES
SIMPLEX DIALING

