

NZPO

DRAWN JL

CHECKED

WIRING

CHECKED

GBW 14340

AMENDMENT PARTICULARS

ISSUE	1
DATE	1-3-55
APP'D	C.M.H.

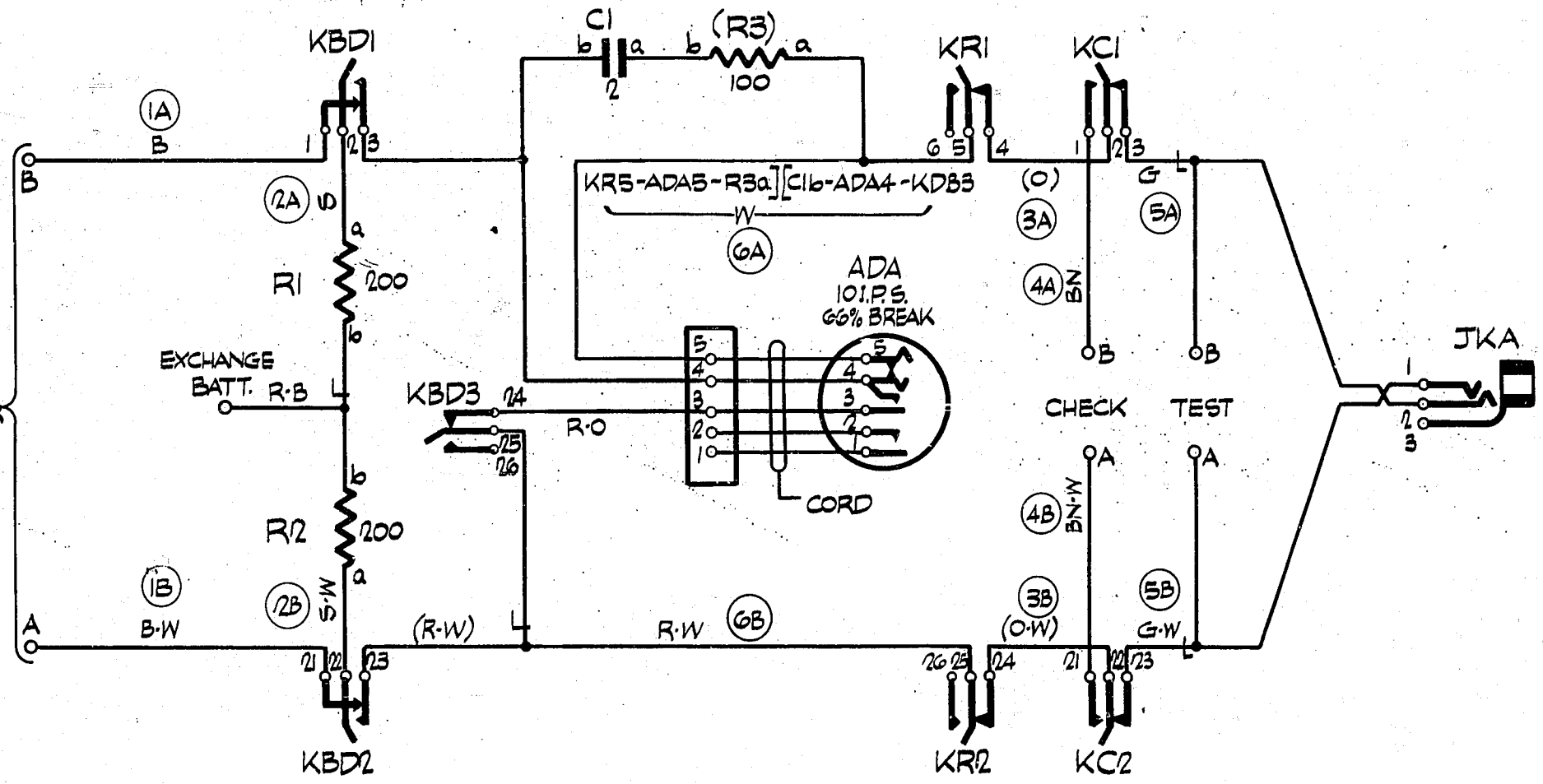
REV.-

SIZE	F
SOY	H

DIAL UNIT FOR TRANSMISSION TESTS

SLOW RE-LEASE
 SLOW OPERATE

TO OSCILLATOR GBW 14320 OR EQUIV.



- NOTES:-
1. ALL WIRING TO BE IN 23 S.W.G UNLESS OTHERWISE SPECIFIED.
 2. KR+KC KEY IN NORMAL POSITION CONNECTS DIAL.

NOTE 2.

BATT. DIAL (KBD)	R LSE (KR)	CHECK (KC)
3	2	2