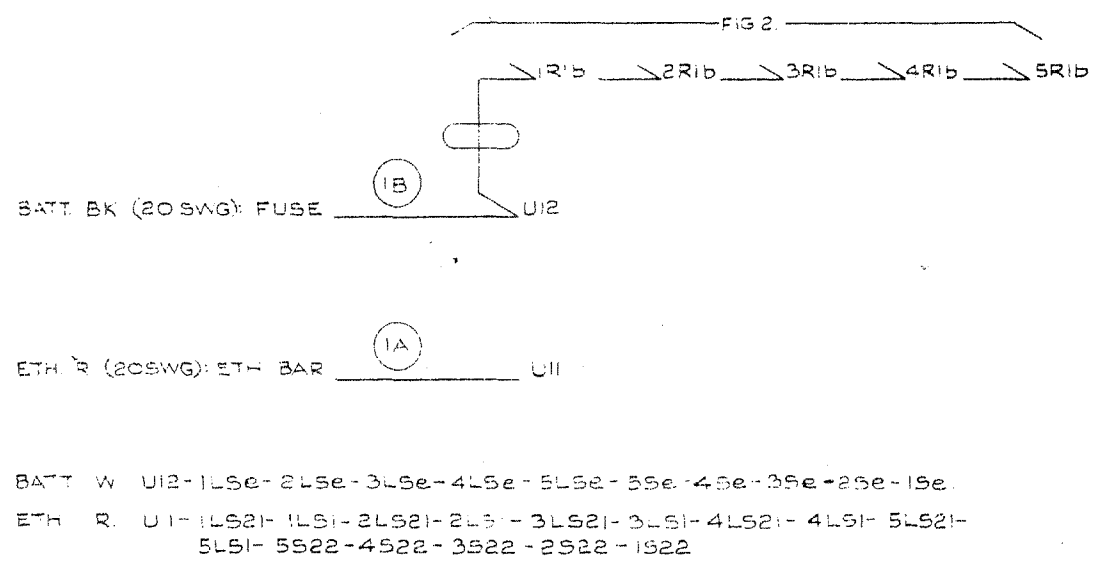
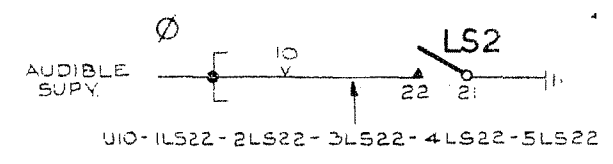


**FIG. 2.**  
LINE LAMP & JACK  
ON MANUAL BOARD



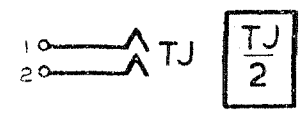
BATT. W. UI2-1L5e-2L5e-3L5e-4L5e-5L5e-55e-45e-35e-25e-15e.  
ETH. R. UI1-1L521-1L51-2L521-2L51-3L521-3L51-4L521-4L51-5L521-5L51-5522-4522-3522-2522-1522



**FIG. 1.**  
RELAY SET

**NOTES:-**

1. FUSE 1.5A PER 5 CIRCUITS
2. Ø FOR WIRING SEE GBW 14380 OR EQUIV
3. 5 CIRCUITS PER BASE.
4. SWITCHPLATE WIRING TO BE 25 SWG



		SLOW RELEASE		SLOW OPERATE	
<b>MANUAL EXTENSION 50/1200 LINE P.A.B.X.</b>					
		(65436)	5.2.55	APP	
AMENDMENT PARTICULARS			ISSUE DATE	APP	50V W
N.Z.P.O.		DRAWN H.H.	CHECKED	WIRING	CIRCUIT
<b>GBW 14250</b>					