

NOTES:

1. FUSE-1.0A PER CCT & ASSOCIATED ROUTE DISCRIMINATING & TIMING CIRCUIT.

2. ALL WIRING TO BE 0.6mm. UNLESS OTHERWISE SPECIFIED LOCAL PLATE WIRING TO BE 0.5mm.

3. Ø FOR WIRING SEE GBW 13730 OR EQUIV.

4. RELAY 'OC' IS DIFFERENTIALLY CONNECTED.

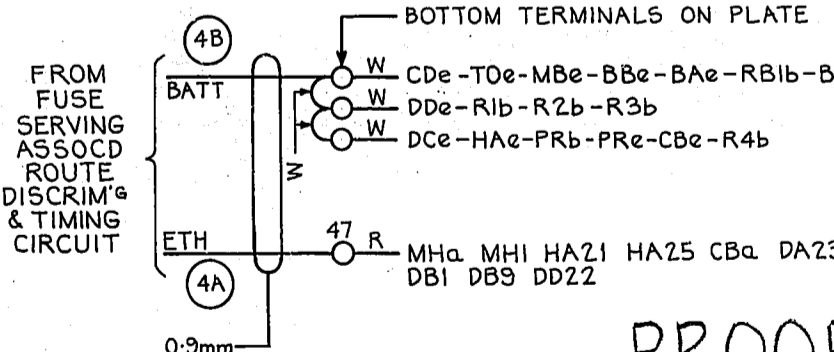
5. UNLESS OTHERWISE SPECIFIED ALL TERMINALS ARE ON STRIP CONN. AT REAR AND ARE DESIGNATED 'SC' IN WIRING RUNS.

6. WHEN JUNCTION RESISTANCE EXCEEDS 200 OHMS STRAP TERMINALS 34 & 44.

7. WHEN WORKING ON AUTO ROUTES ON WHICH ROUTE DISCRIMINATION EQUIPMENT IS NOT REQD STRAP SC 32 TO SC 42, SC 43 TO SC 46, SC 48 TO SC 58 & SC 35 TO SC 45

N.Z. NOTE

A. WHEN RELAY SET IS USED ON NON-METERED ROUTES DISCONNECT RINGING MACHINE START LEAD AT TERMINAL 40.



PROOF

RETRACTED FROM 155.GA 19.1-78 (17028)	7	7.3.80
(30845)	1	3.8.54 C.W.H
AMENDMENT PARTICULARS	ISS DATE	APP

TJ	12	DRAWN	CHECKED	WIRING	CIRCUIT
		N.S.			

GBW 13960

U.A.X. N° N.Z. 13
O/G JUNCTION TO
DEPENDENT EXCHANGE
NON TERMINATING
TRAFFIC

SIZE A2 SOV H