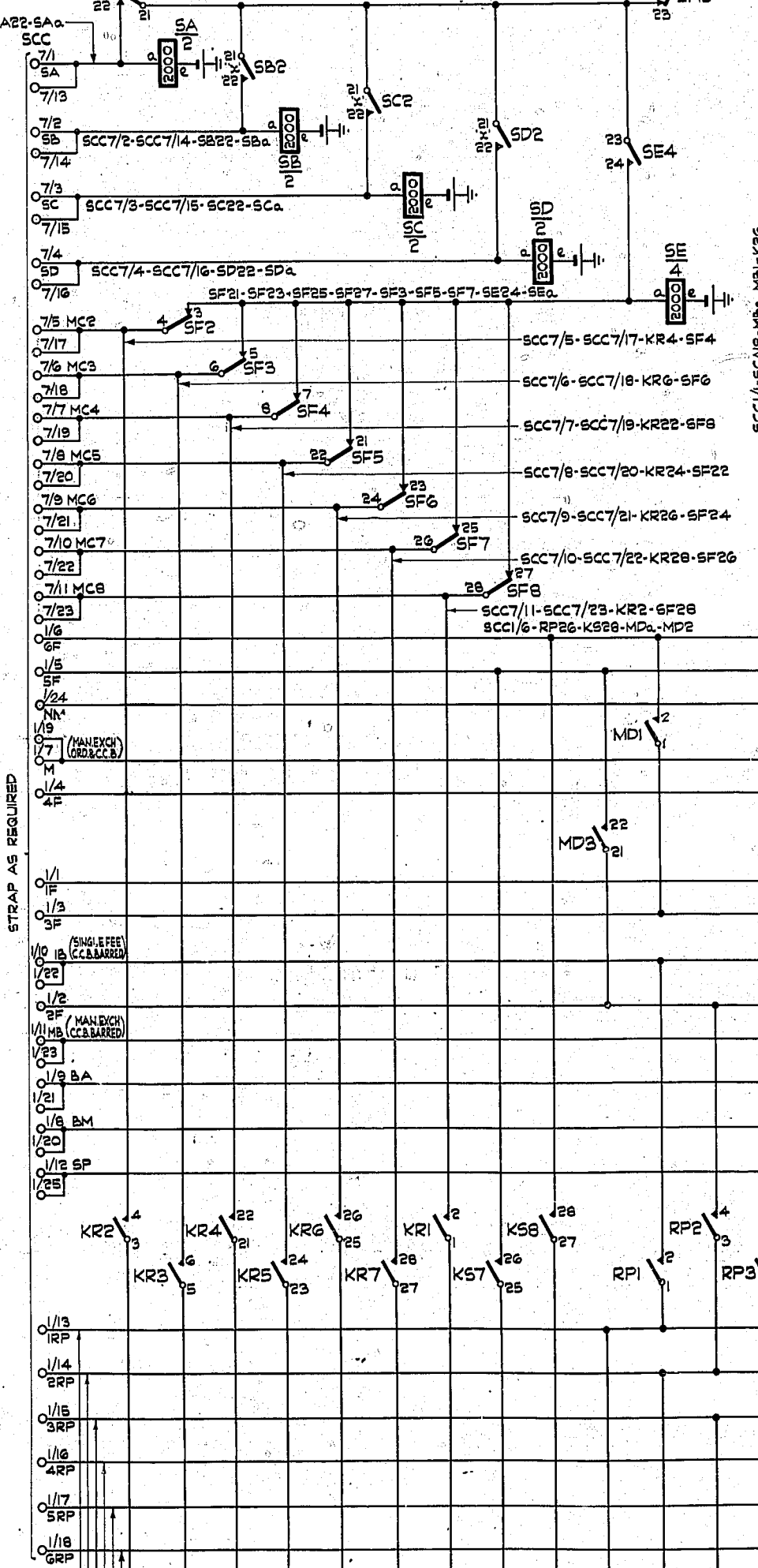
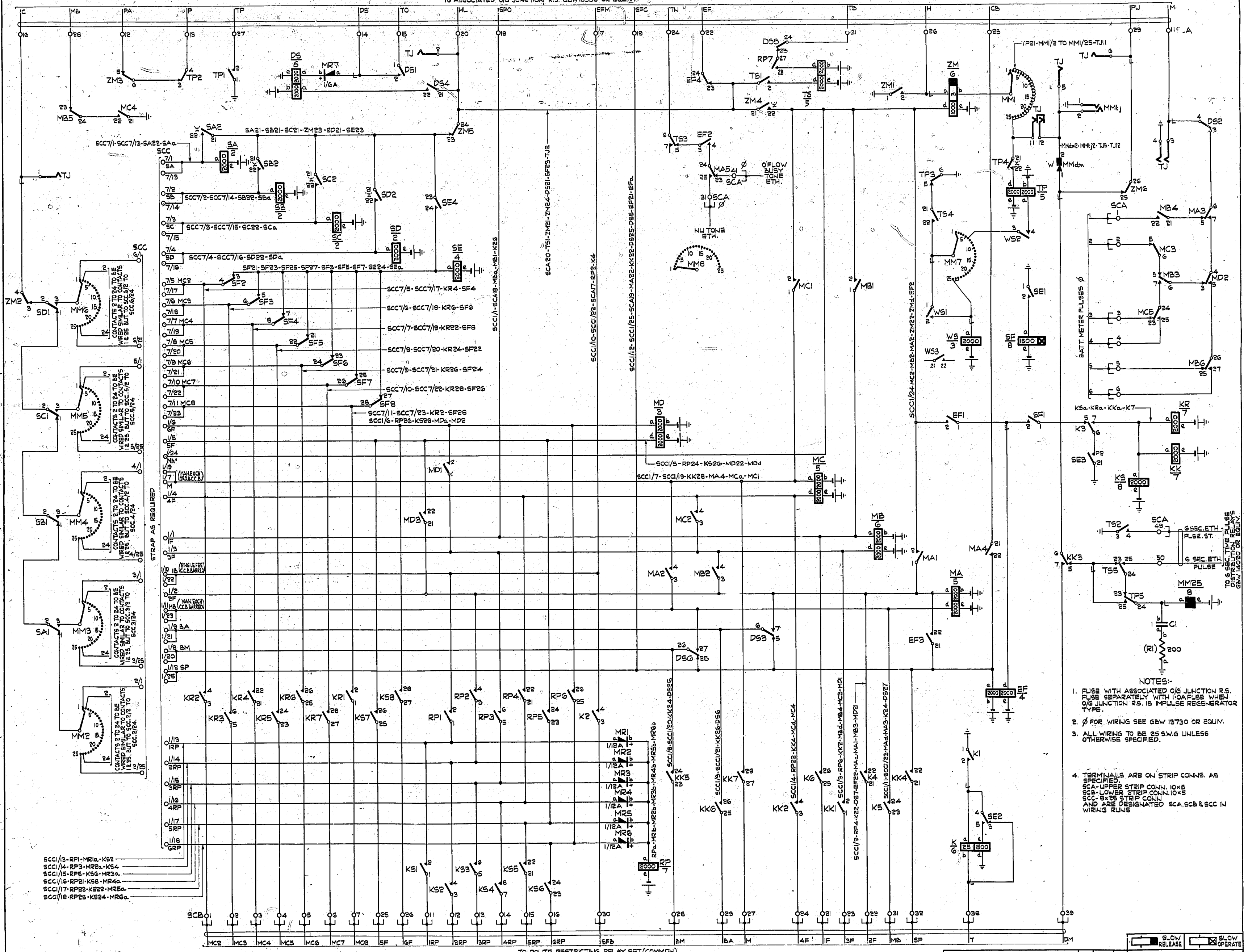


TO ASSOCIATED O/G JUNCTION R.S. GBW13930 OR EQUIV.

0  
5 Centimeters  
10  
15  
20  
25  
30  
35  
40  
45  
50  
55  
60

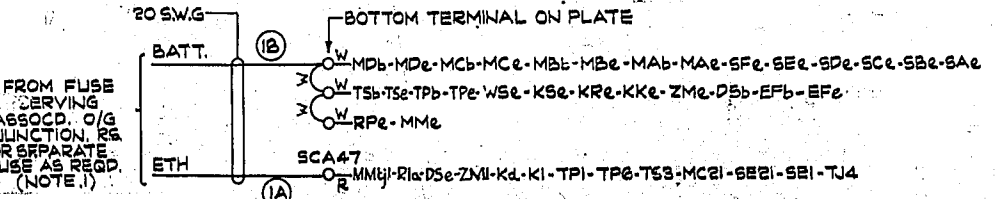


STRAP AS REQUIRED

SCC1/3-RP1-MR1a-K52  
 SCC1/4-RP2-MR2a-K54  
 SCC1/5-RP3-K55-MR3a  
 SCC1/6-RP4-K56-MR4a  
 SCC1/7-RP5-K57-MR5a  
 SCC1/8-RP6-K58-MR6a

- NOTES:-
1. FUSE WITH ASSOCIATED O/G JUNCTION R.S. FUSE SEPARATELY WITH 1-0A FUSE WHEN O/G JUNCTION R.S. IS IMPULSE REGENERATOR TYPE.
  2. Ø FOR WIRING SEE GBW 13730 OR EQUIV.
  3. ALL WIRING TO BE 25 SW.G UNLESS OTHERWISE SPECIFIED.
  4. TERMINALS ARE ON STRIP CONNS. AS SPECIFIED  
 SCA-LOWER STRIP CONN. 10x5  
 SCB-LOWER STRIP CONN. 10x5  
 SCC-6x25 STRIP CONN.  
 AND ARE DESIGNATED SCA, SCB & SCC IN WIRING RUNS

TO ROUTE RESTRICTING RELAY SET (COMMON) GBW1400 OR EQUIV.



DRAWN		CHECKED		WIRING		CIRCUIT		DATE		APPR		SIZE		L		B		H	
NZPO		DL		FD		28		28		28		28		28		28		28	
U.A.X. No. N.Z. 13										ROUTE DISCRIMINATING & TIMING CIRCUIT									
AMENDMENT PARTICULARS										ISSUE DATE									
PIP-PIP-PIP TONE ETH. DELETED. (74879)										4 30-8-63 D.B.H.									
DS RELAY COILS REVISED.										3									
RELAY 'TS' REVISED.										2									

GBW 13920