

FIG. 1.

FUSE ALARM  
1 PER UNIT "A" & "B"  
1 PER 2 UNITS "E"

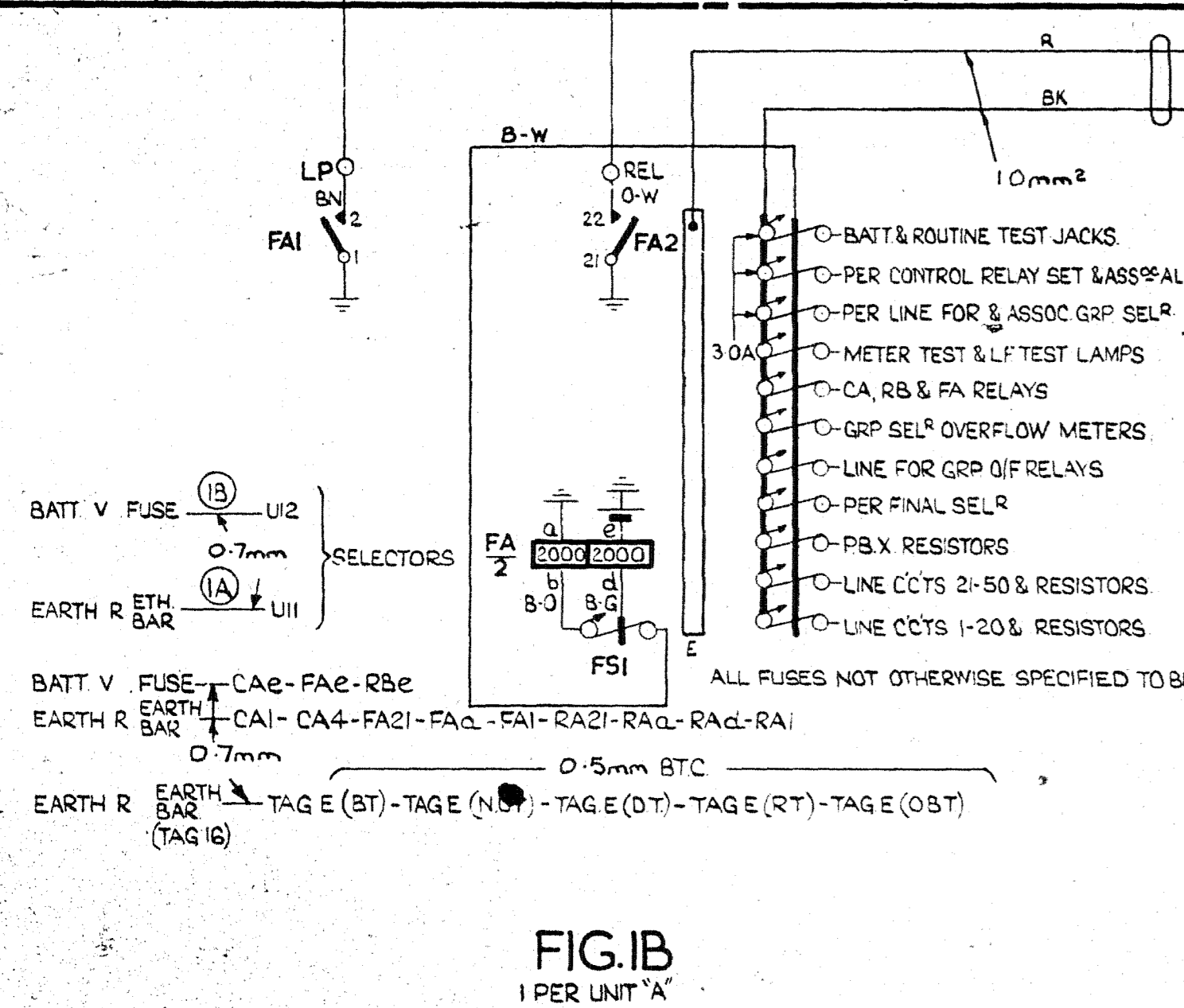
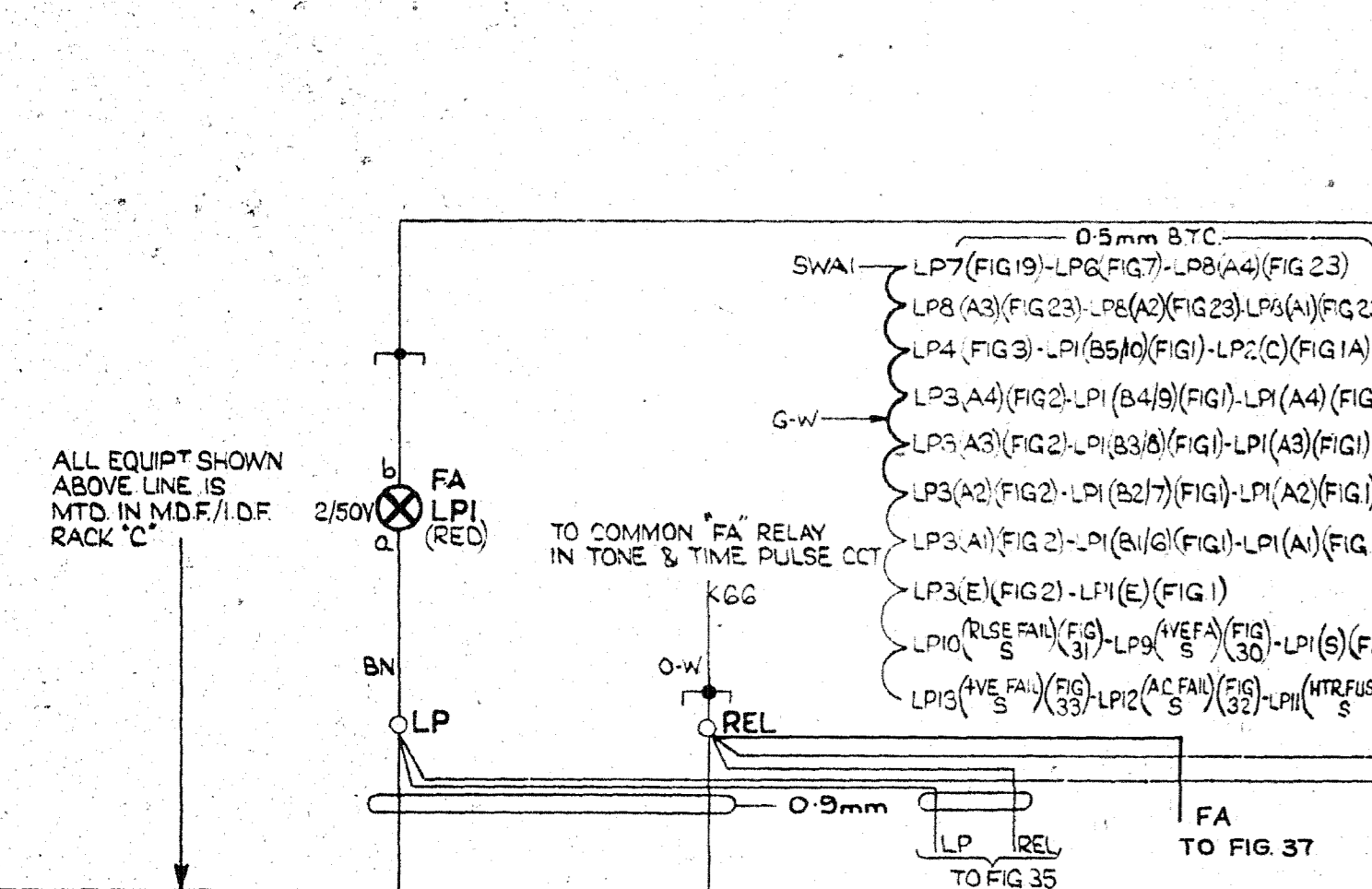


FIG. 1B  
1 PER UNIT "A"

FIG. 1A

1 PER UNIT "C"  
NOTE 14

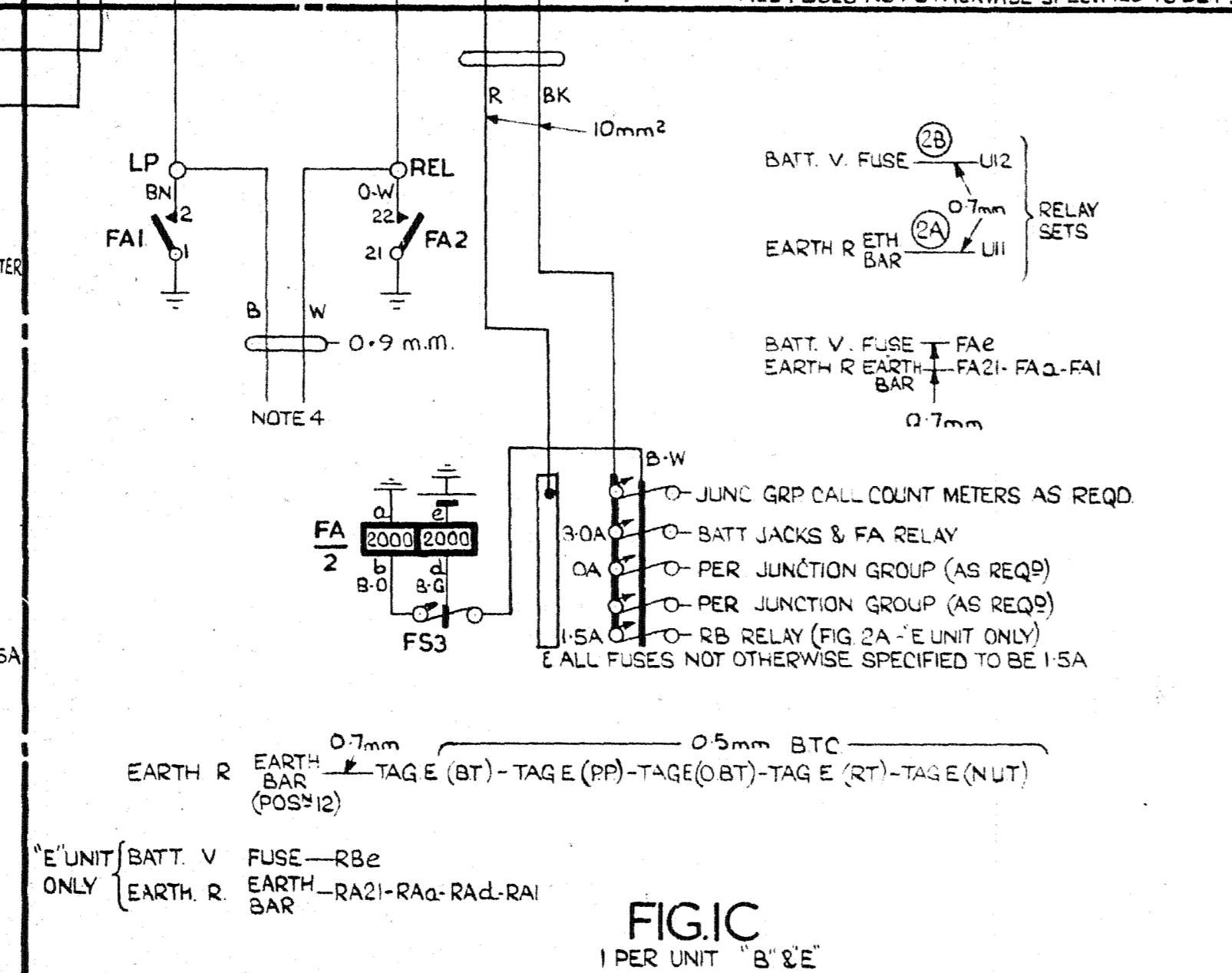
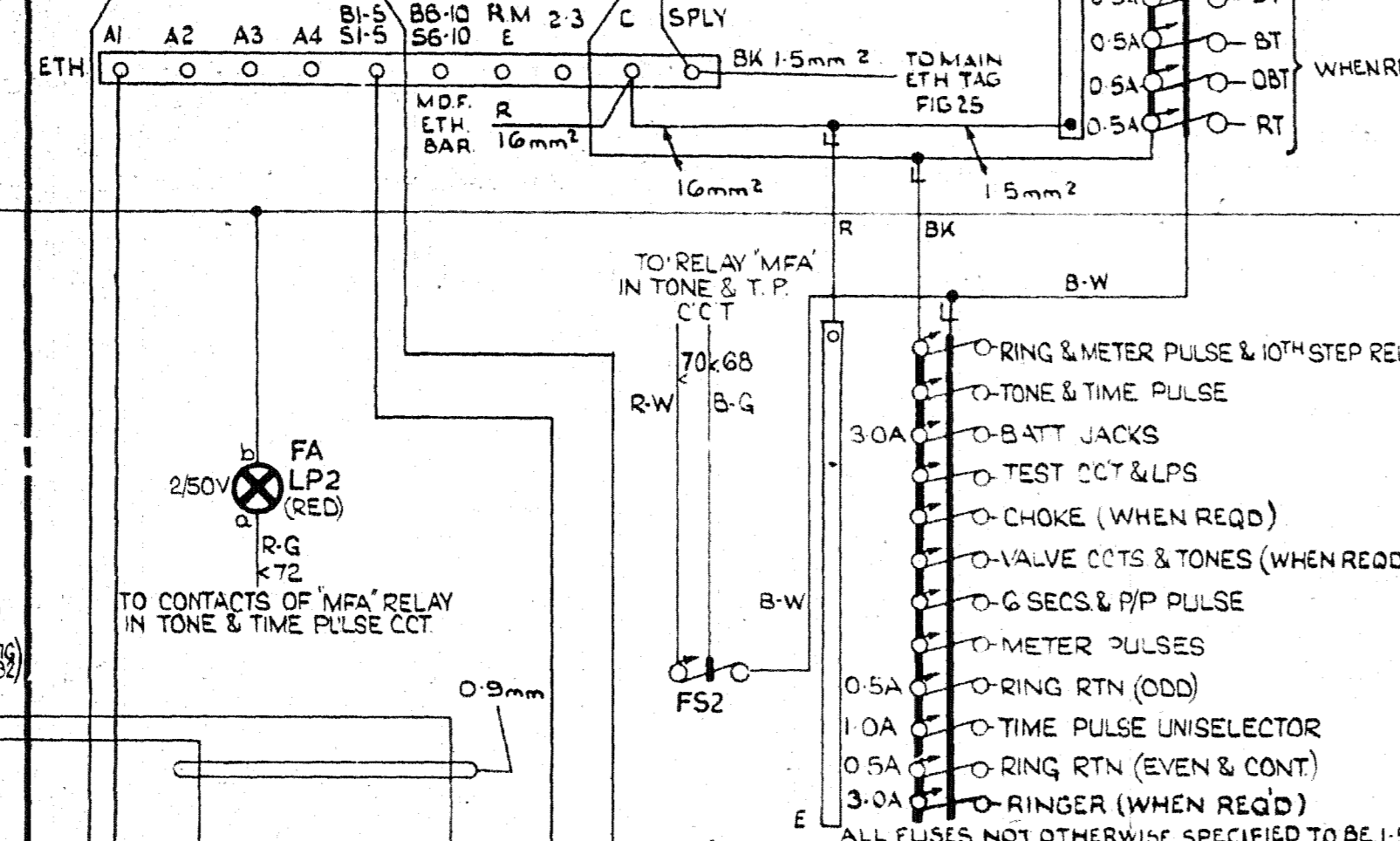


FIG. 1C  
1 PER UNIT "B" & "E"

FIG. 2

RELEASE ALARM EARTH  
1 PER UNIT "A" "B" & "E" NOTE 11

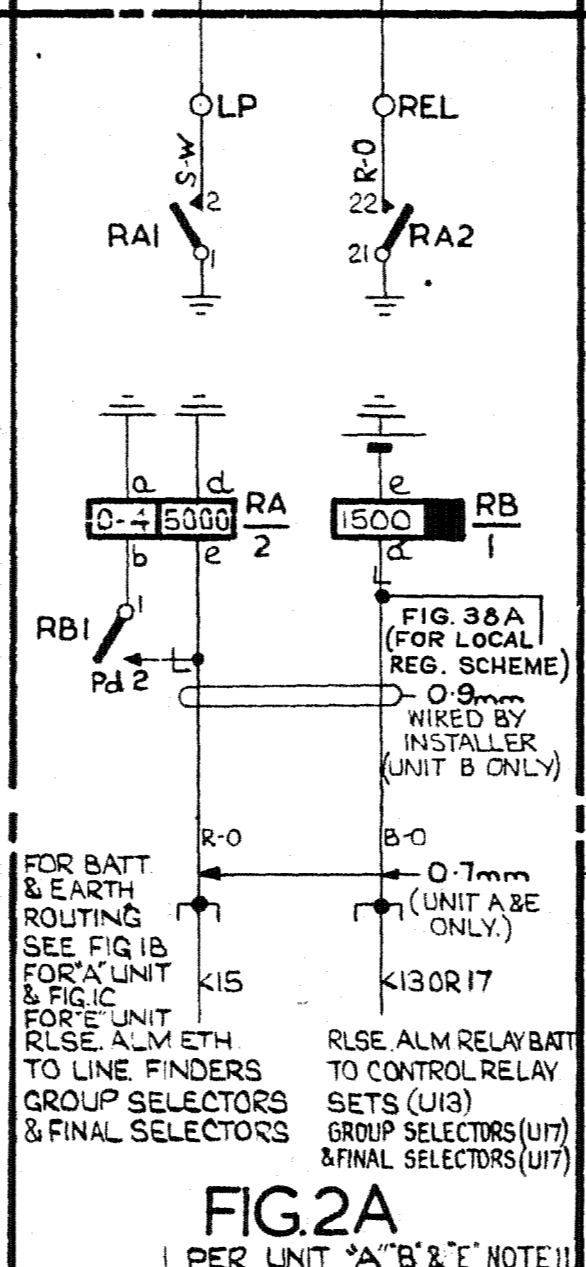
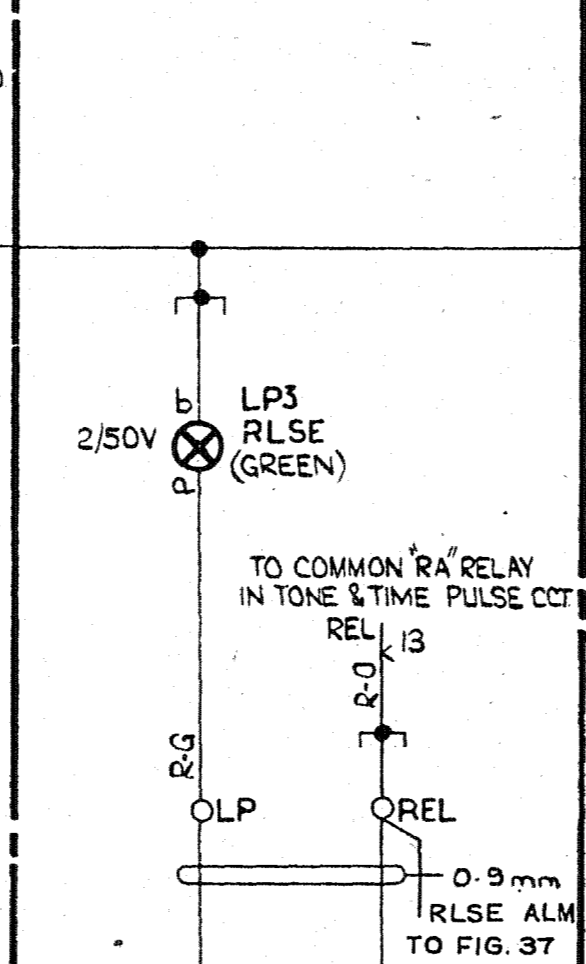


FIG. 2A  
1 PER UNIT "A" "B" & "E" NOTE 11

FIG. 3

P.G. ALARM  
1 PER 4 UNITS "A"

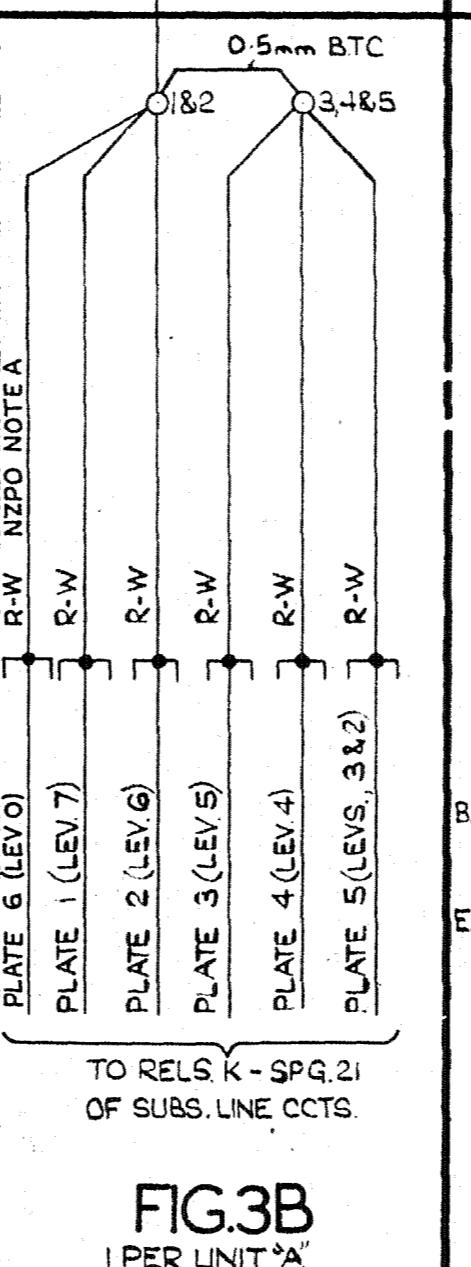
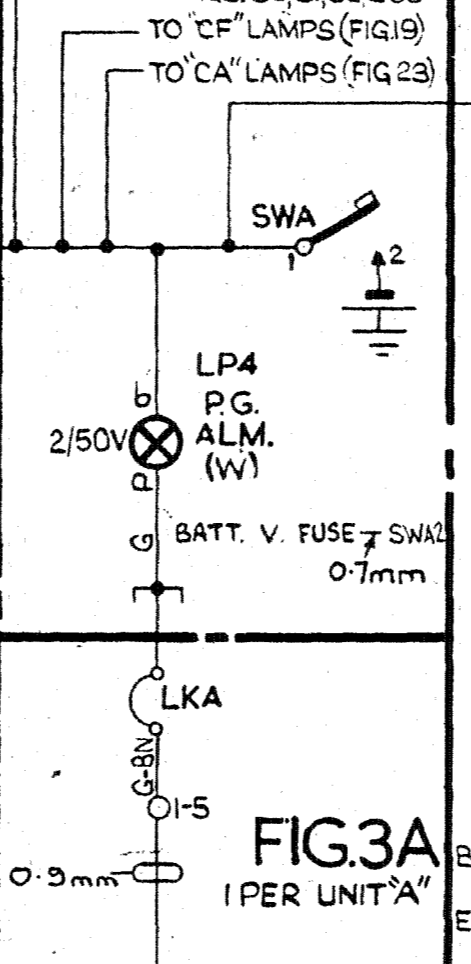


FIG. 3B  
1 PER UNIT "A"

FIG. 4

BATTERY JACKS  
1 PER UNIT "C" & "E"

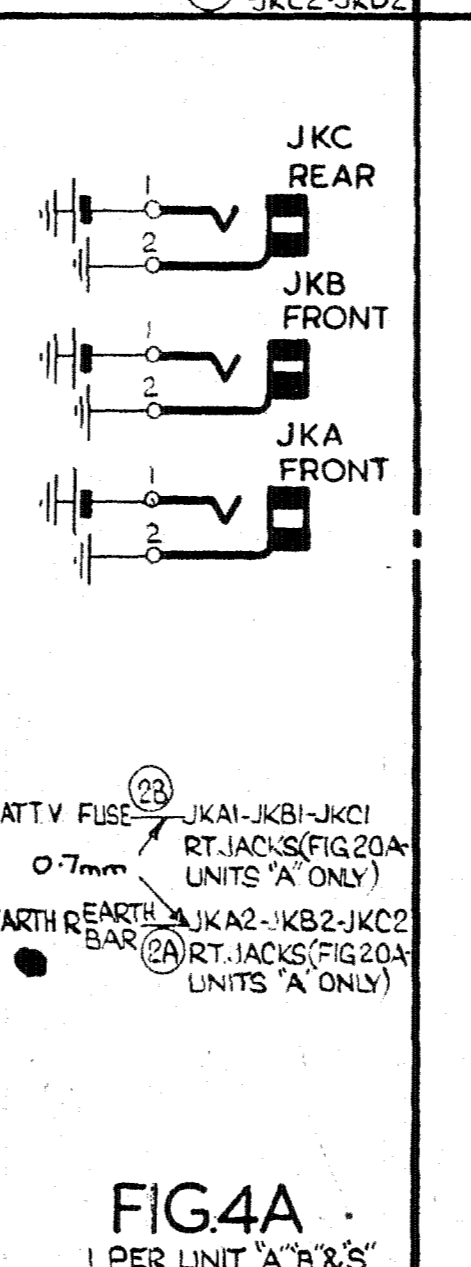
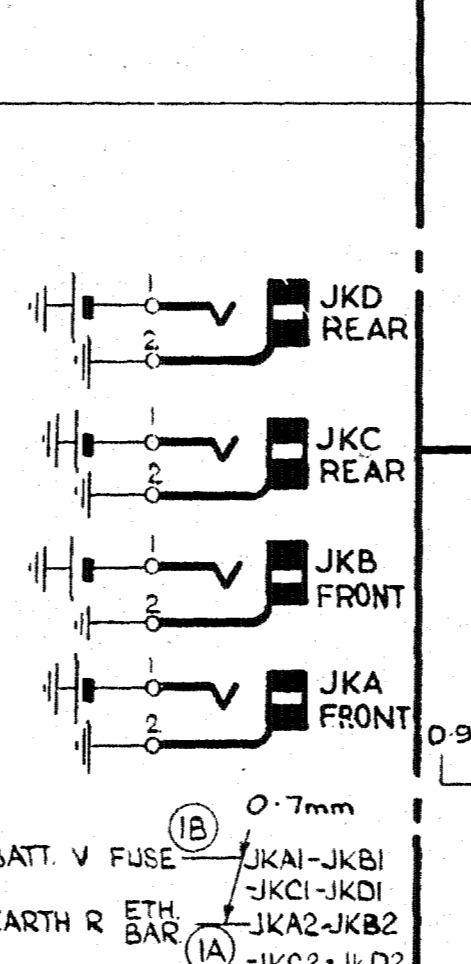


FIG. 4A  
1 PER UNIT "A" "B" & "E"

FIG. 5

METER ROUTINE TEST  
1 PER 4 UNITS "A"

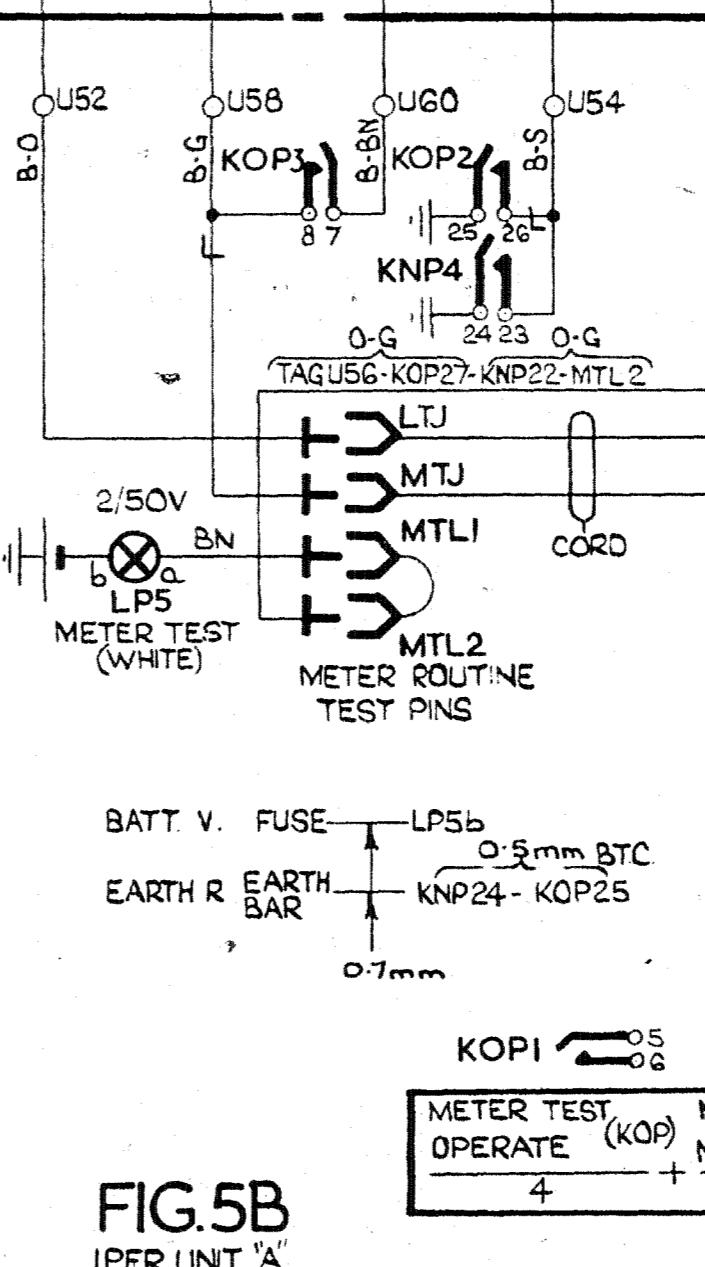
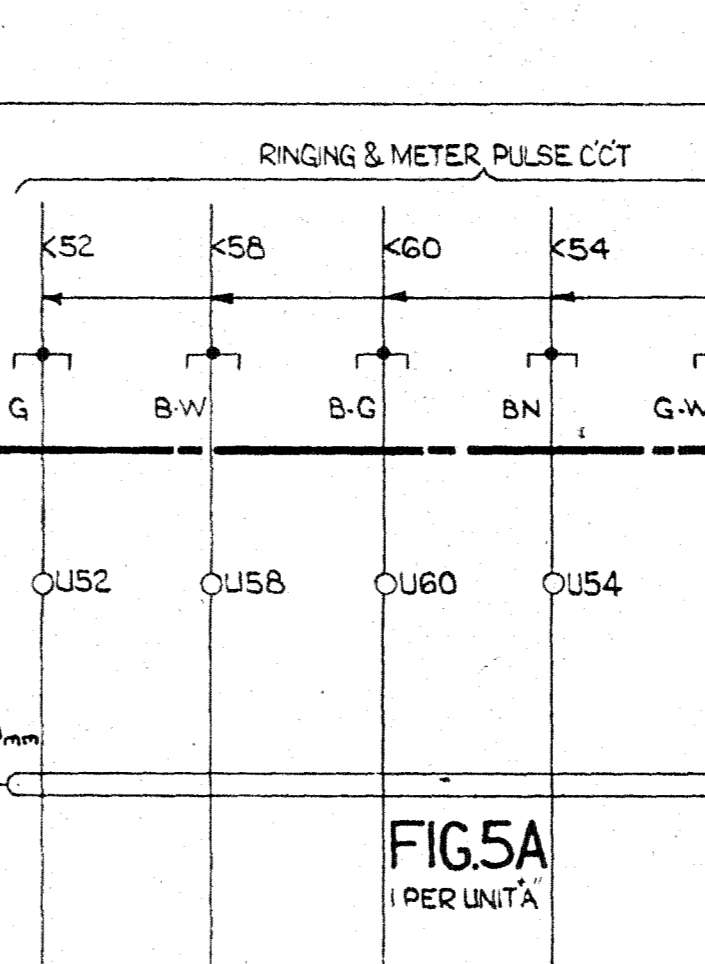


FIG. 5B  
1 PER UNIT "A"

FIG. 6

P.B.X. RESISTOR  
(FINAL SEL<sup>R</sup>)

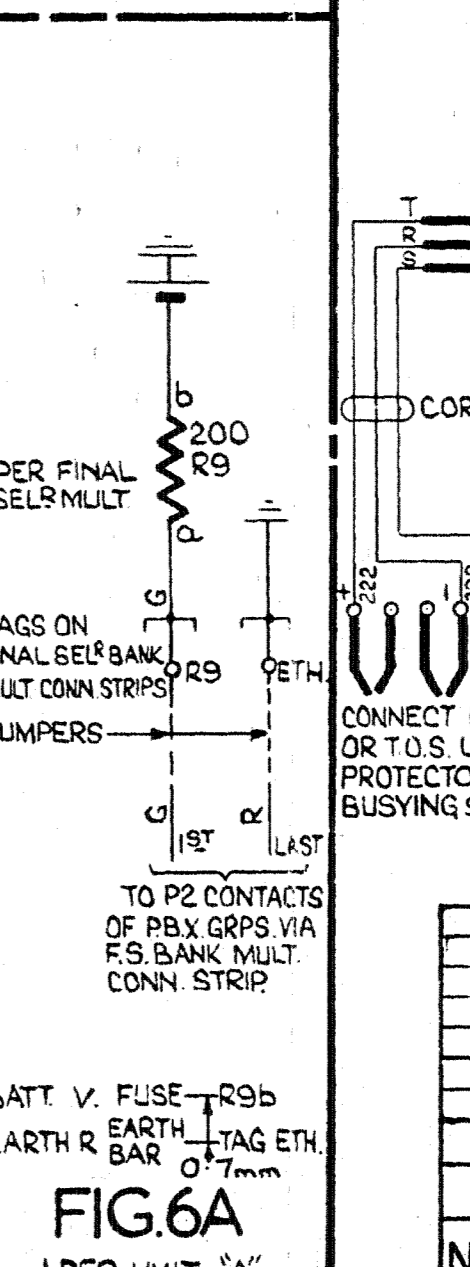
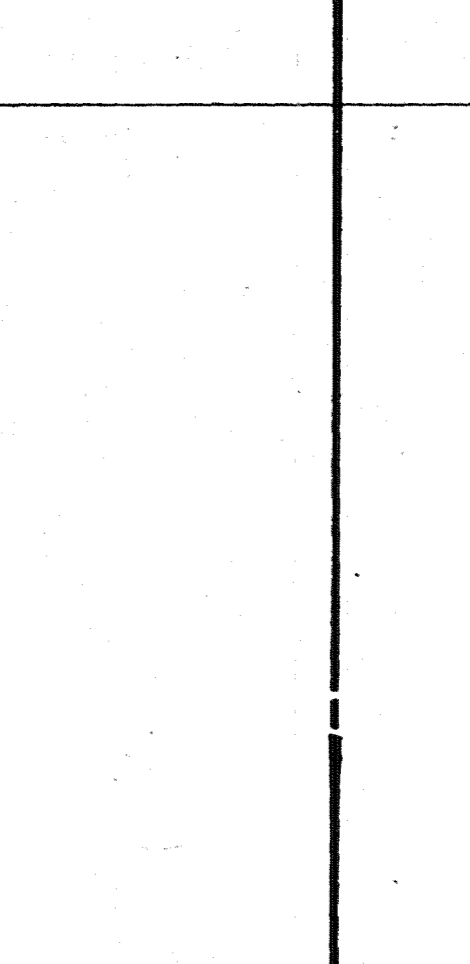


FIG. 6A  
1 PER UNIT "A"

FIG. 7

NU. TONE DISTRIBUTION  
UNALLOTTED, CEASED & T.O.S. LINES  
1 PER "C" UNIT (200 LINES)

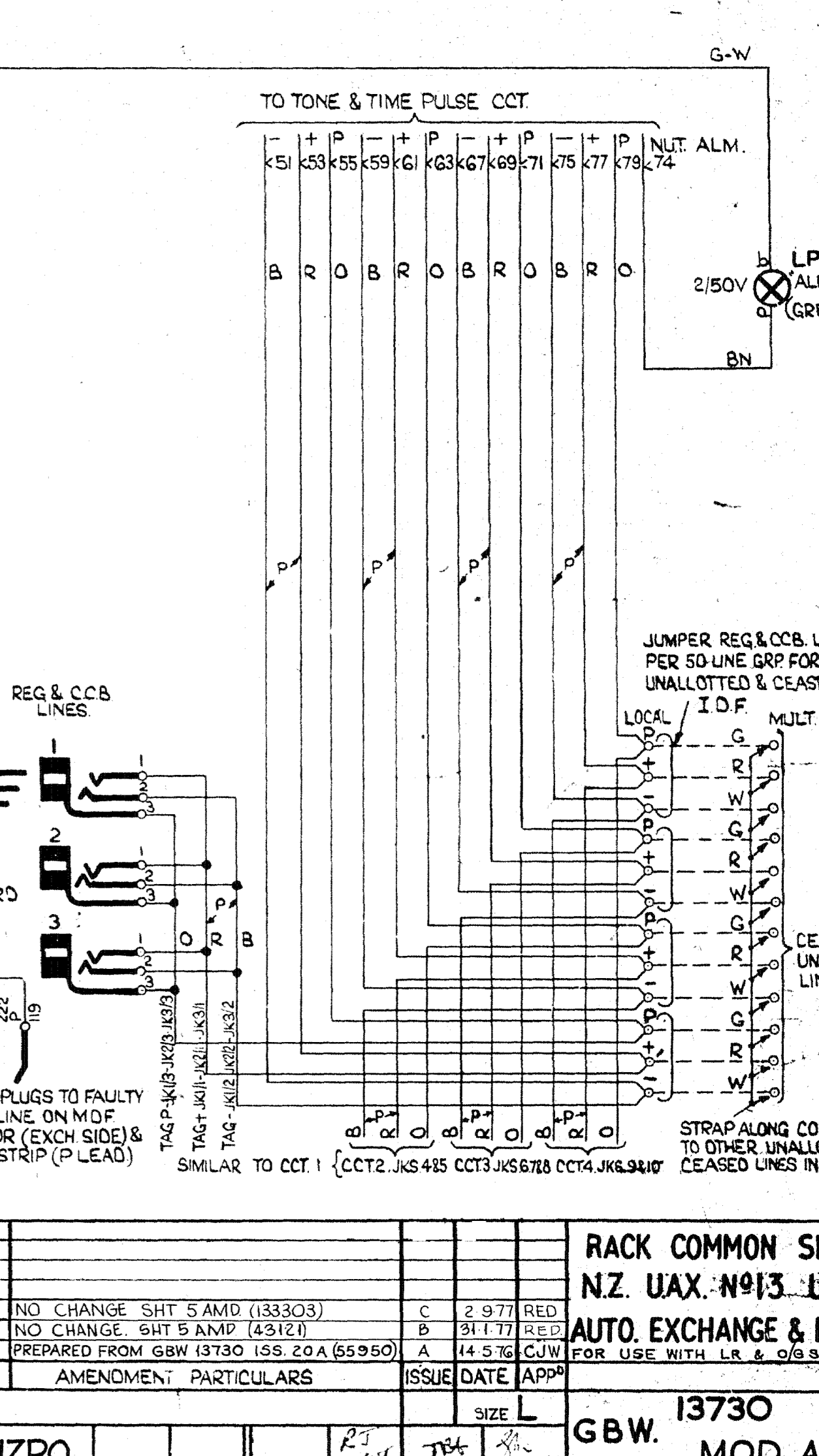
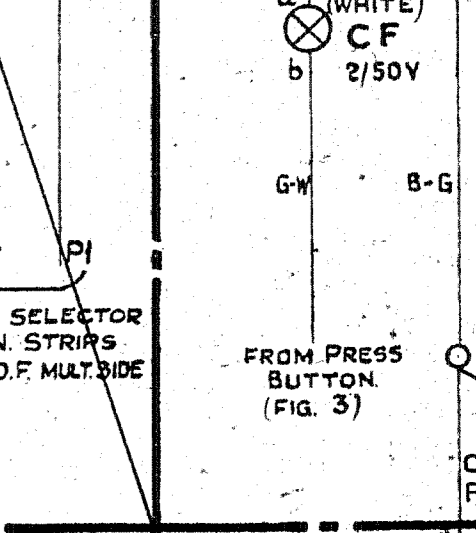
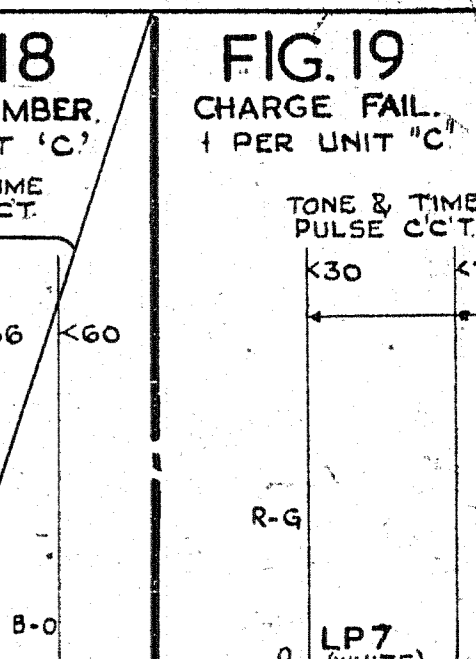
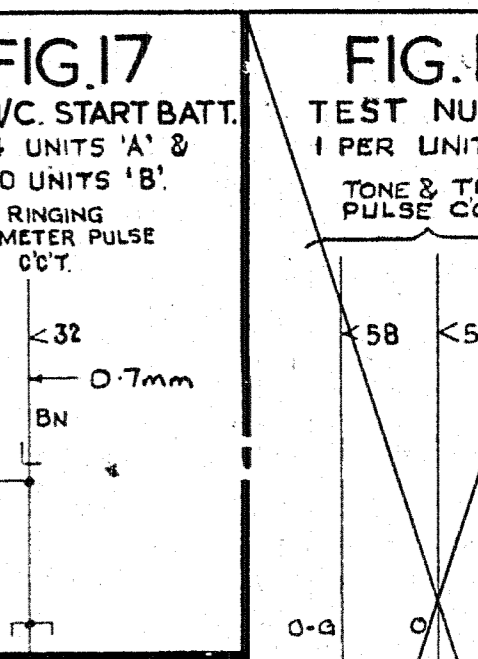
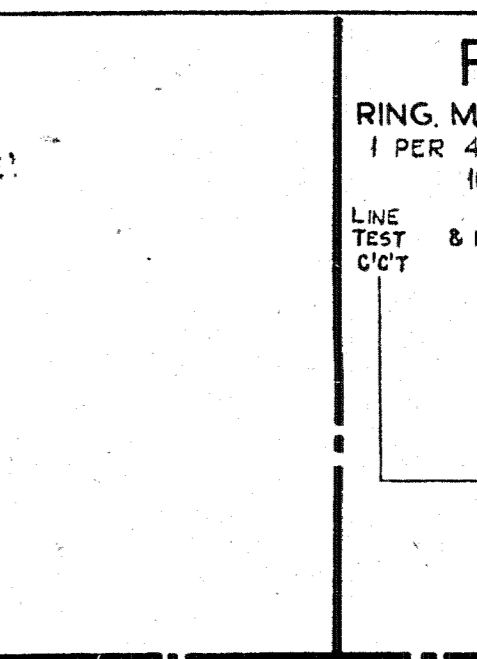
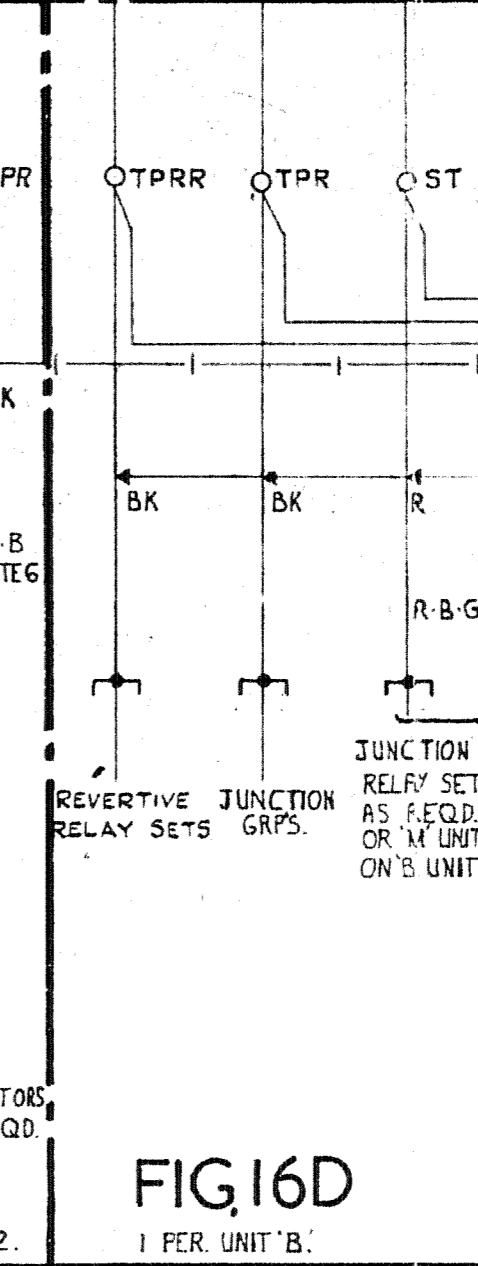
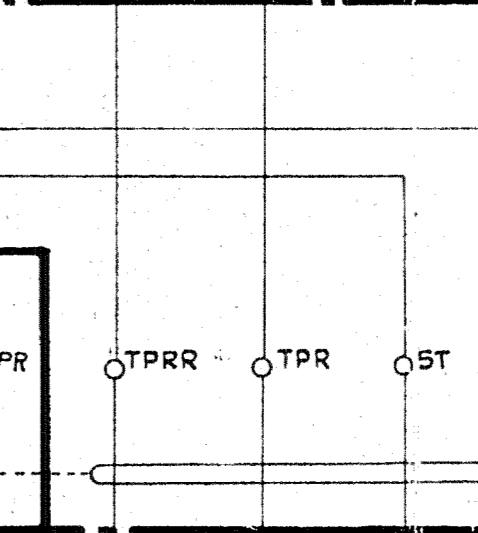
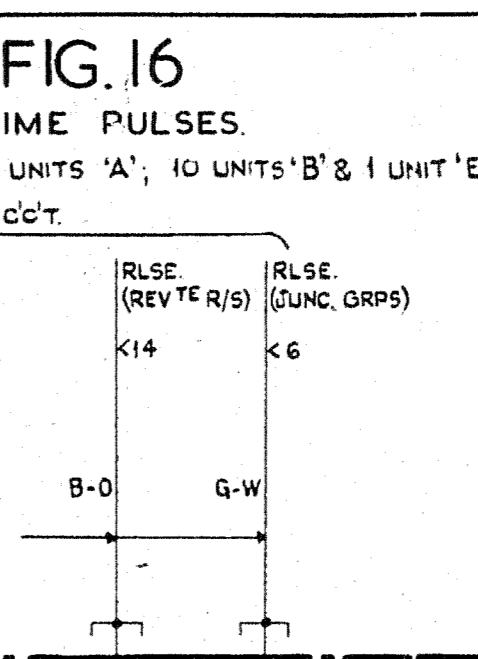
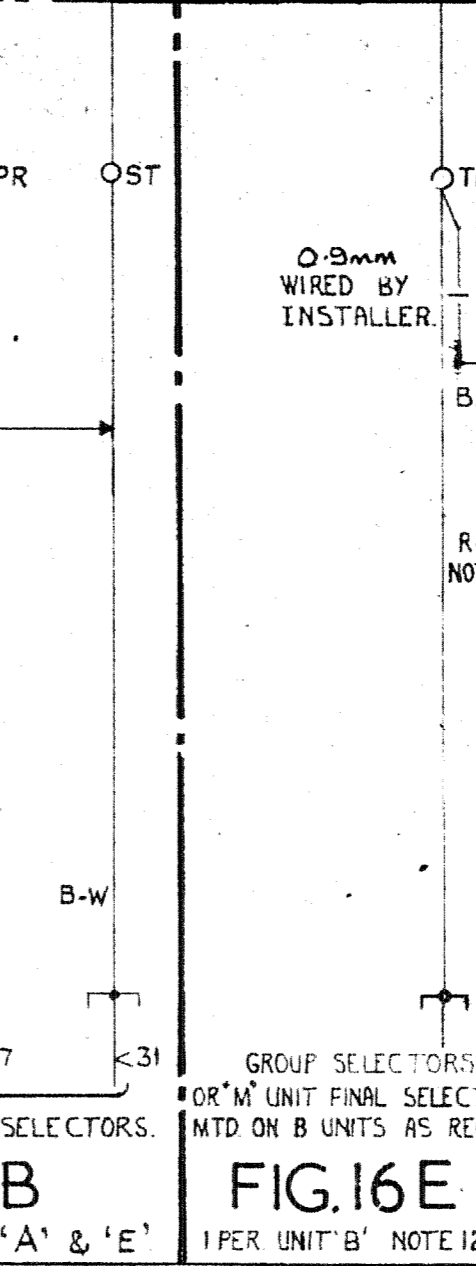
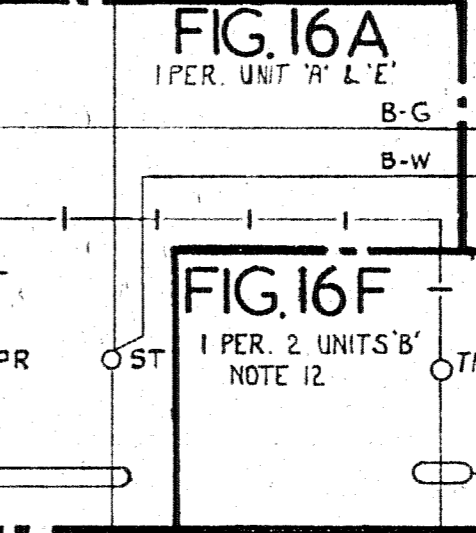
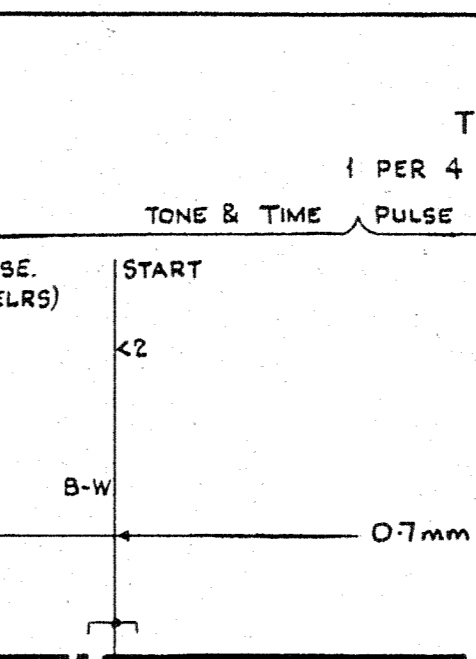
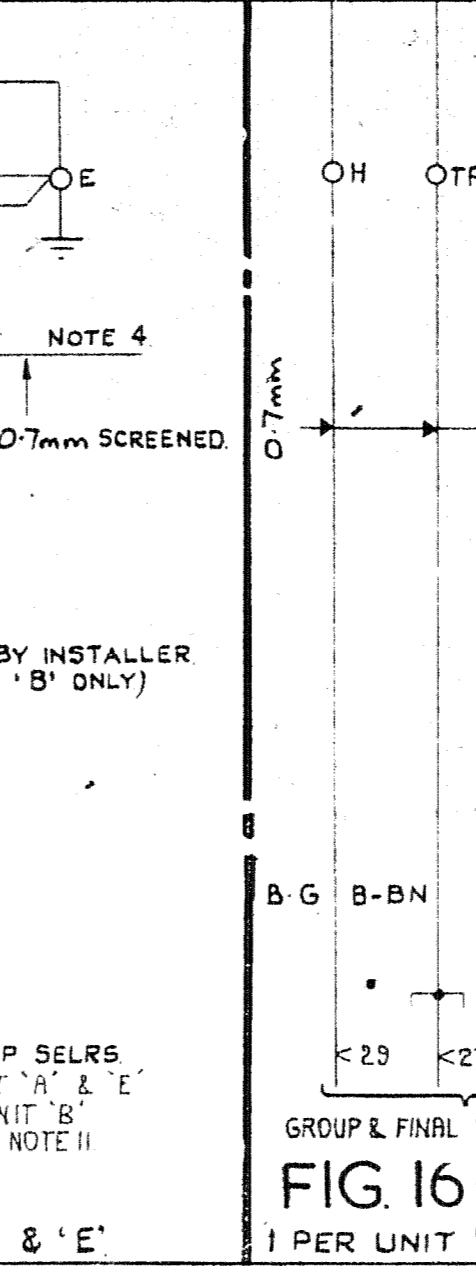
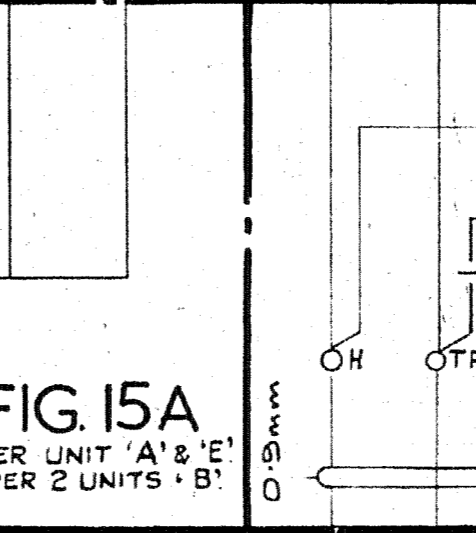
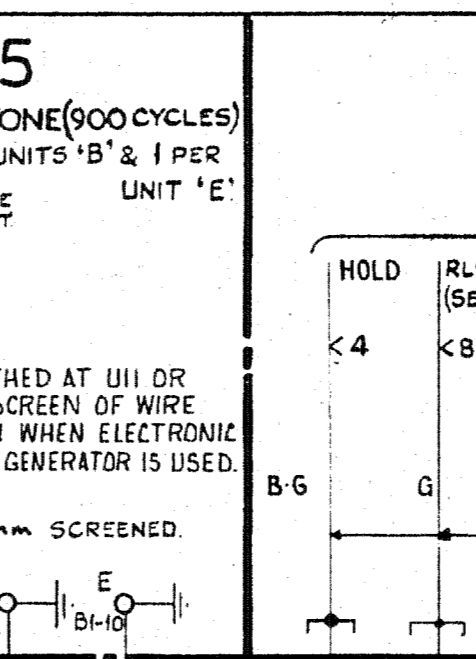
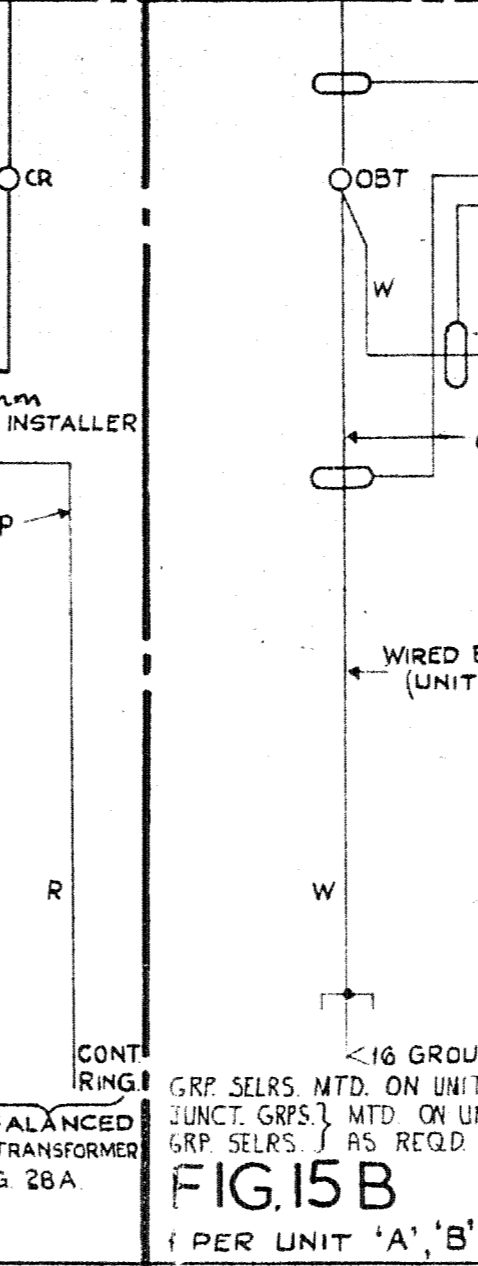
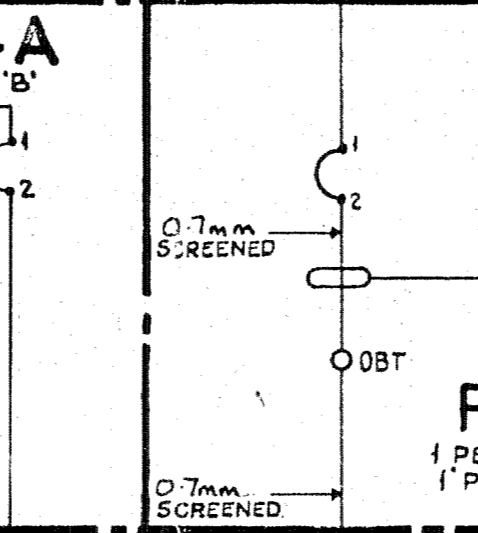
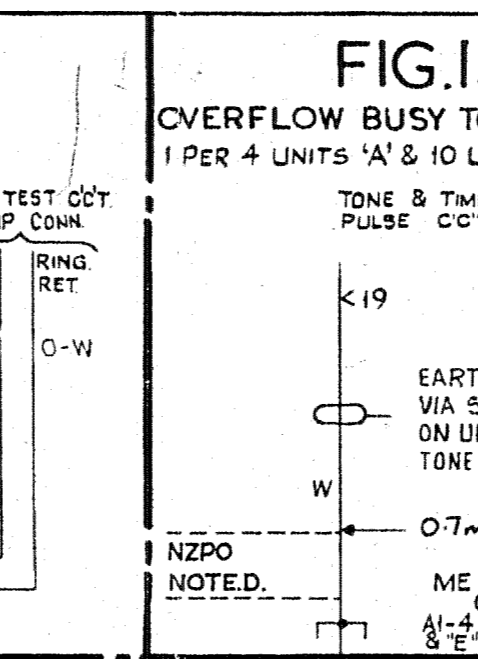
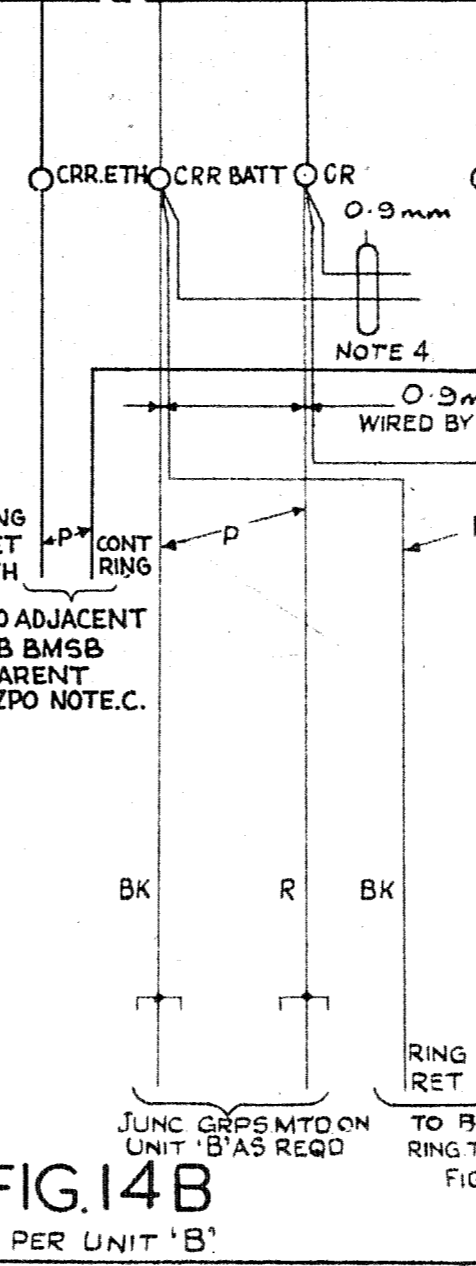
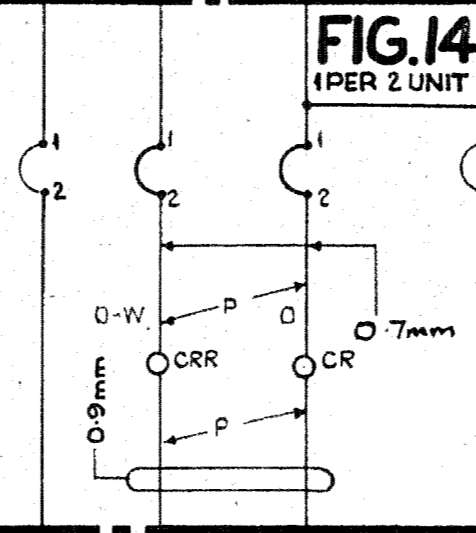
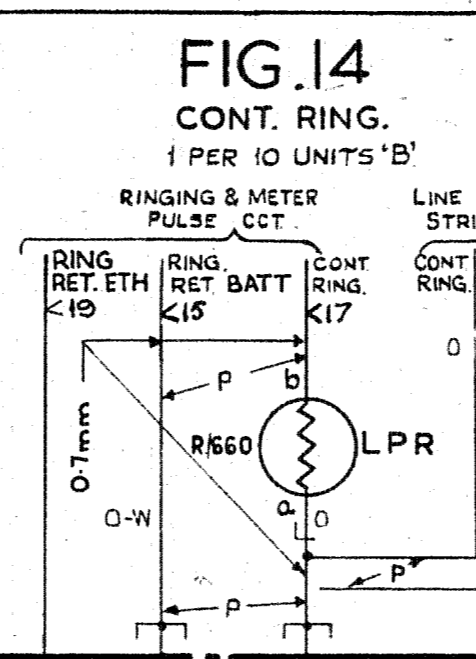
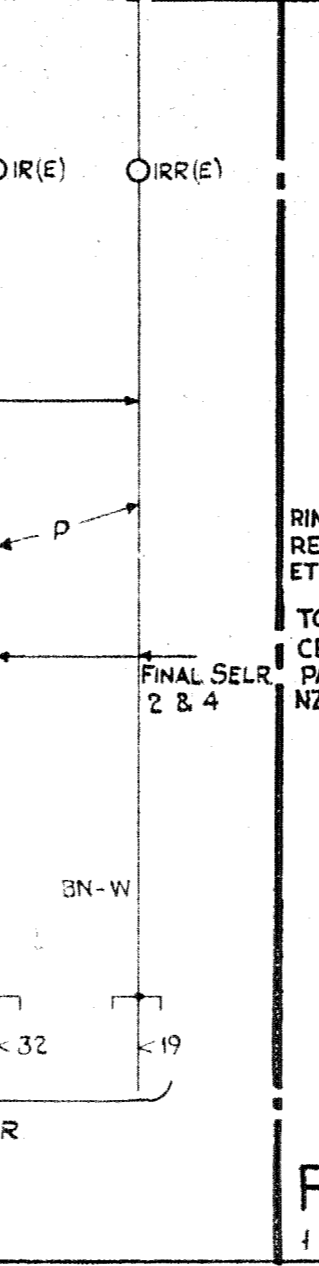
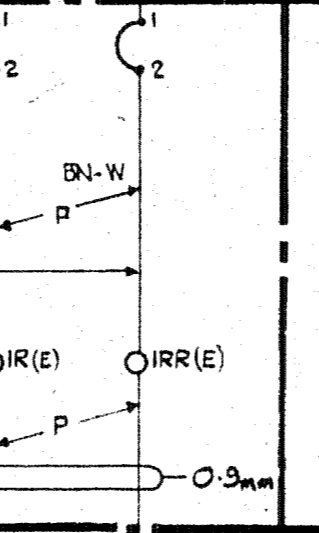
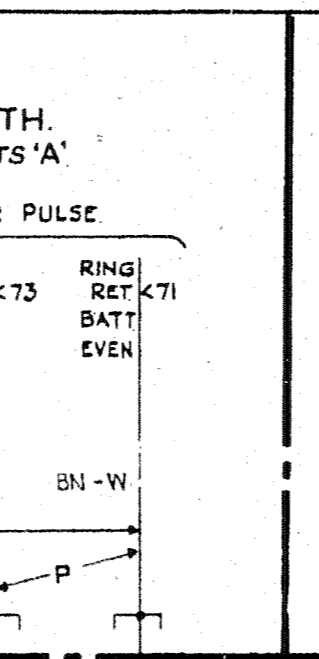
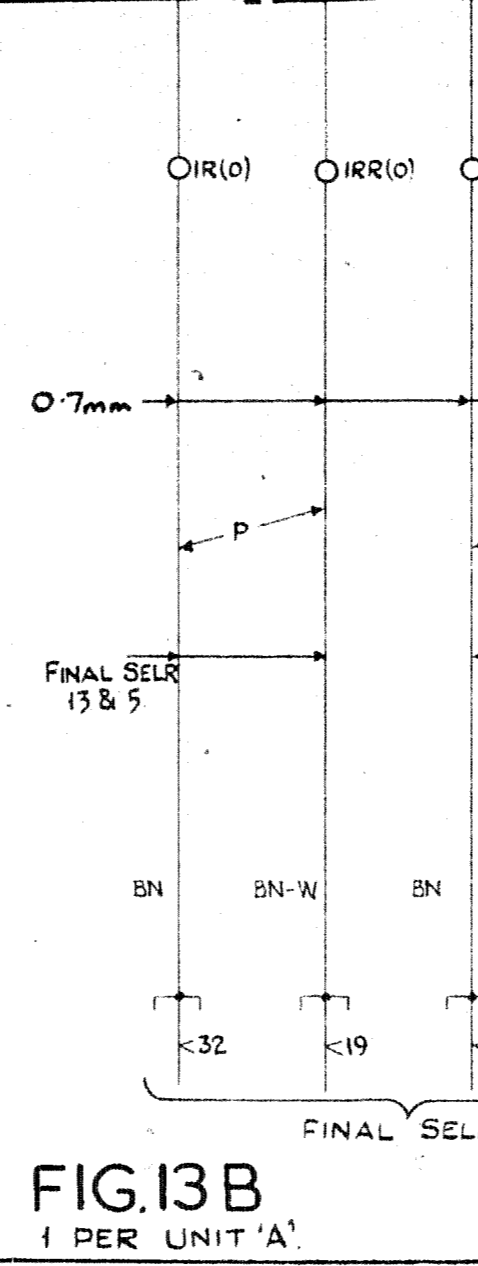
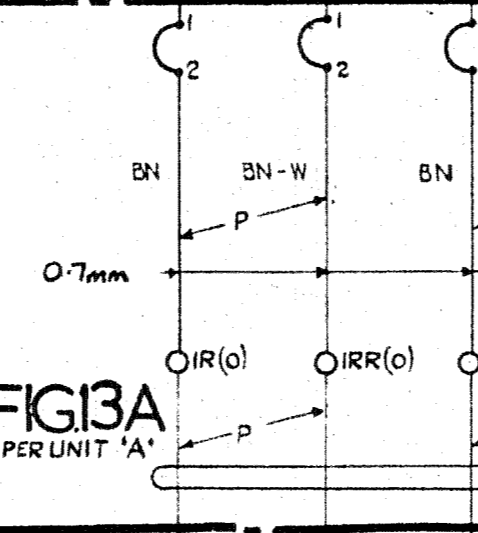
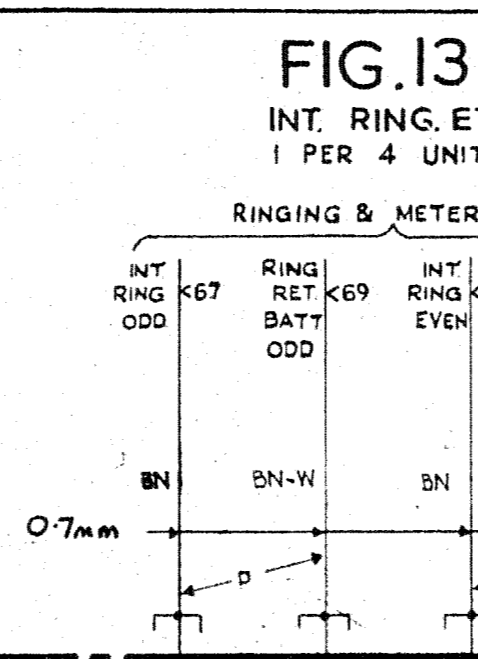
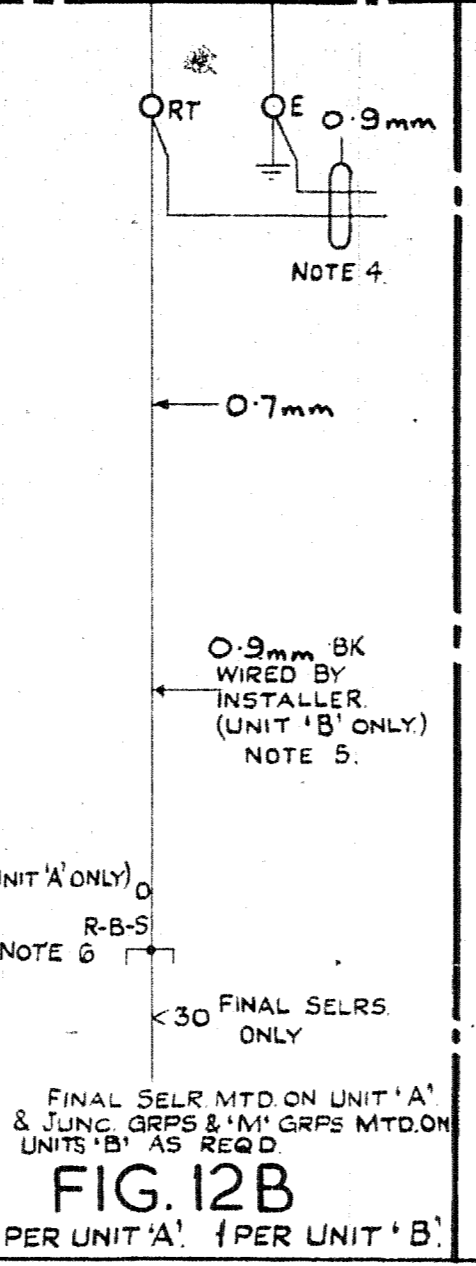
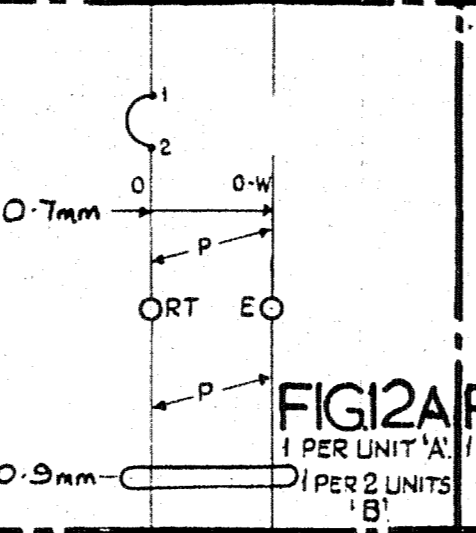
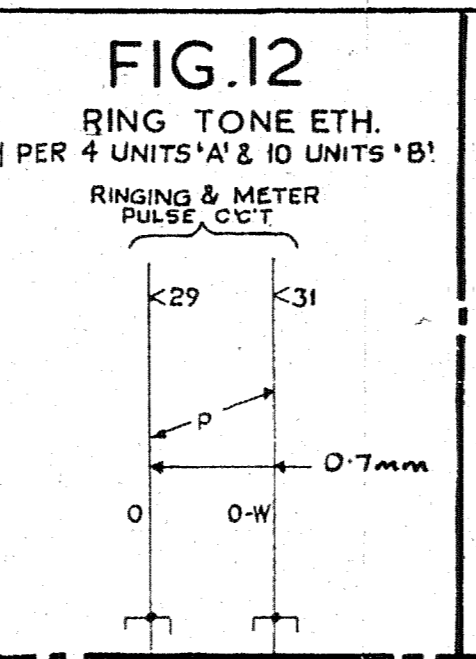
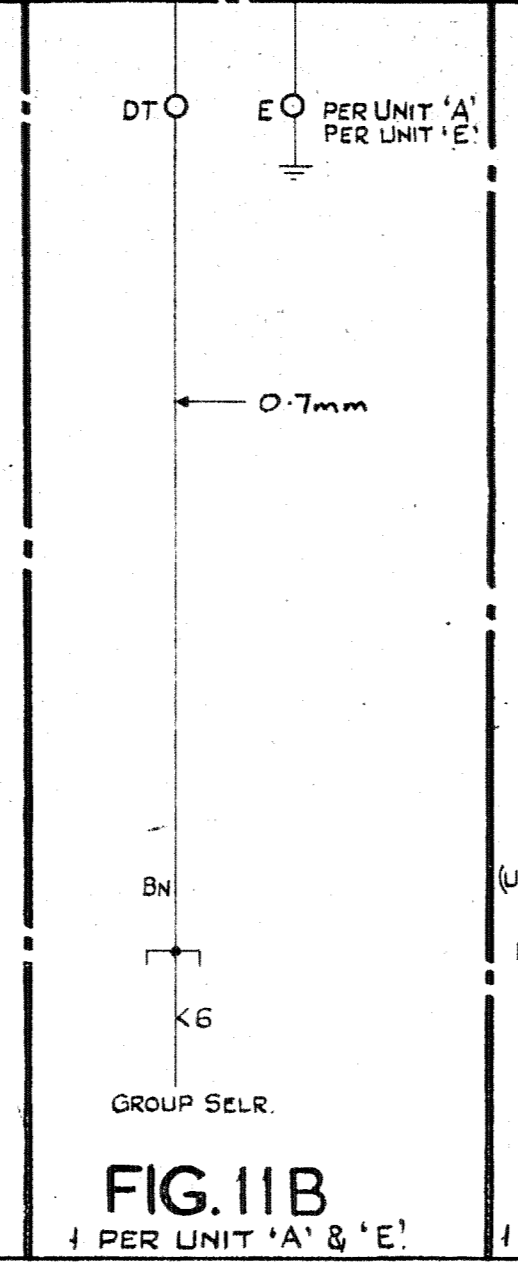
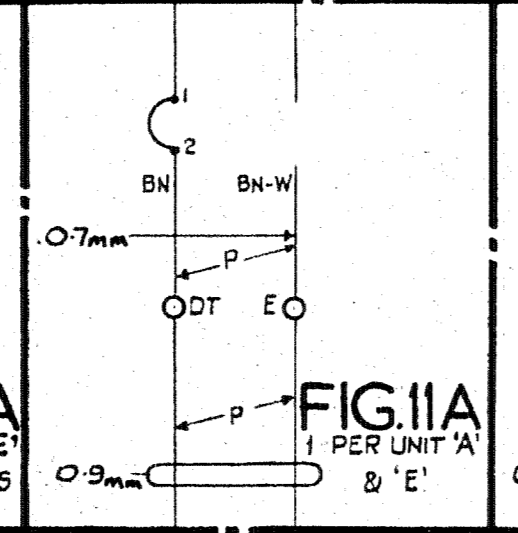
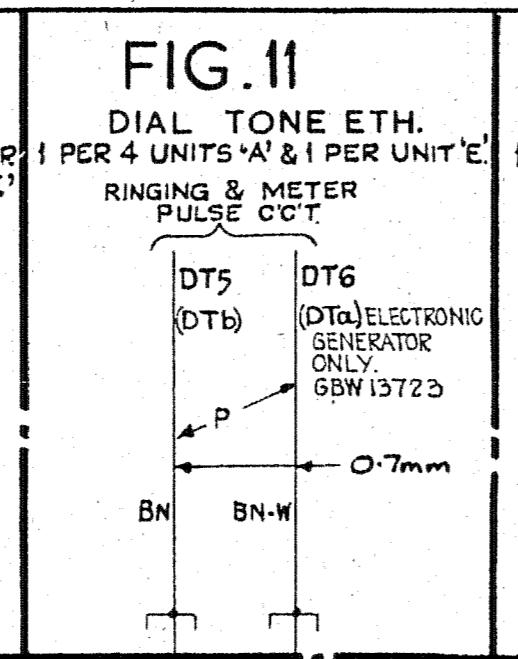
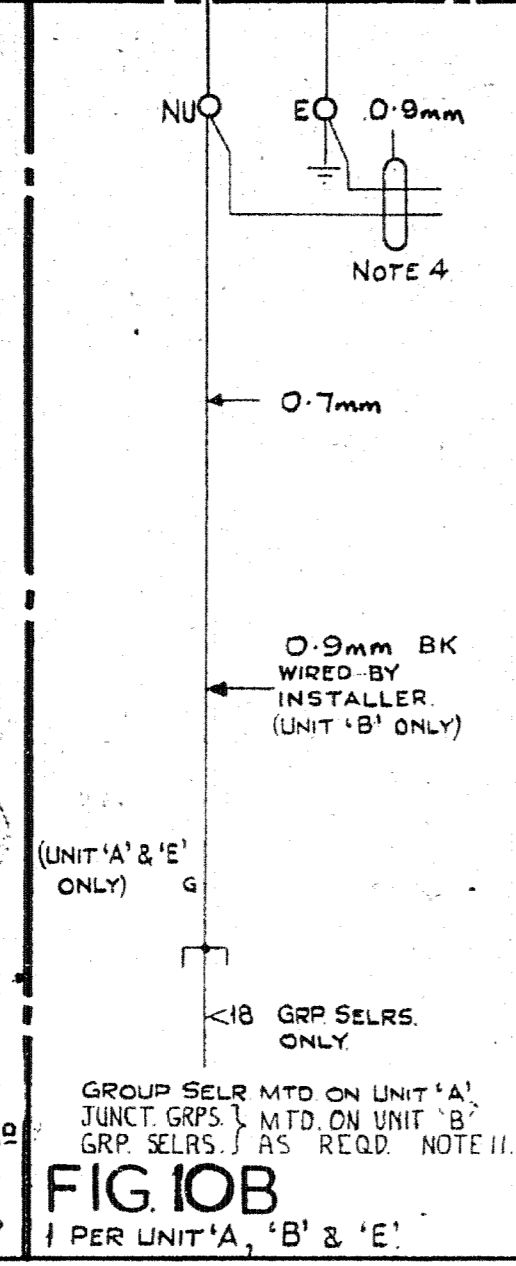
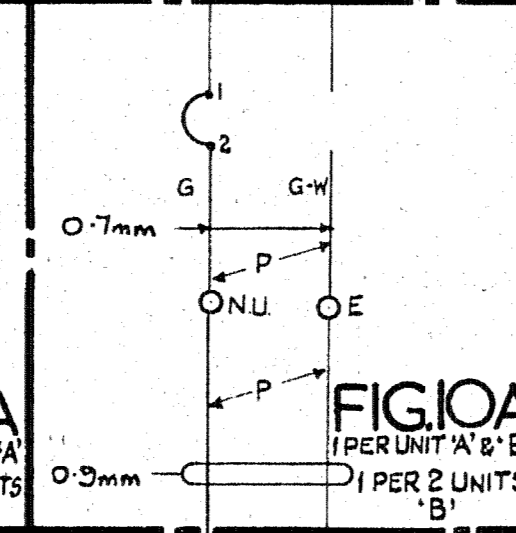
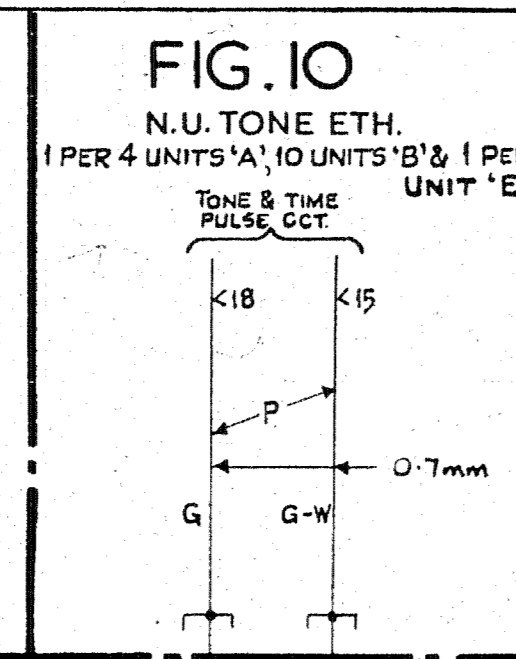
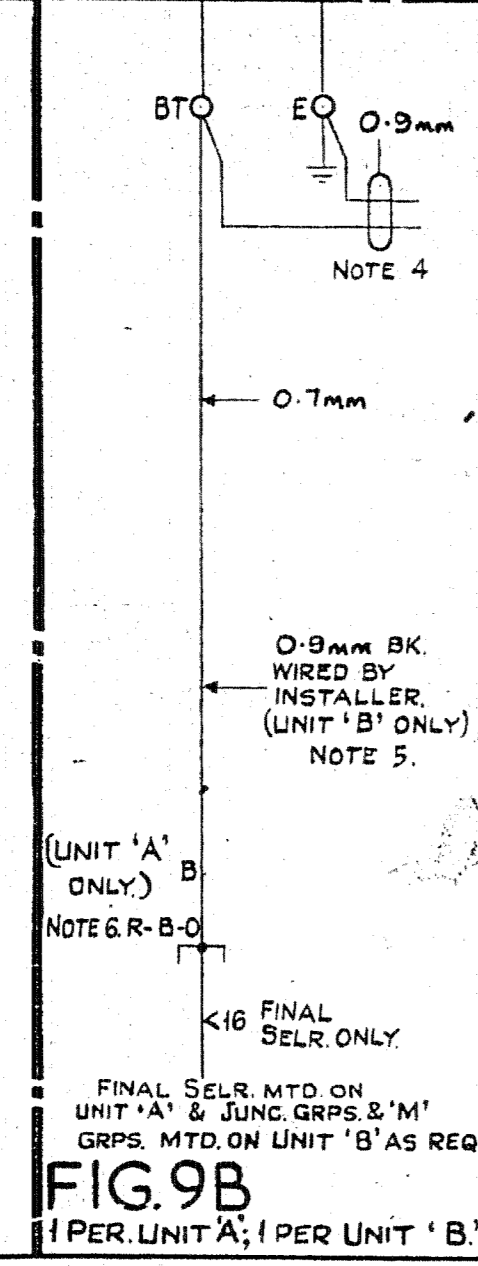
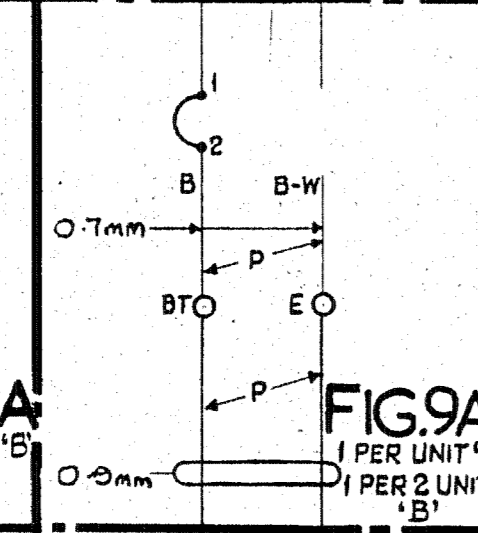
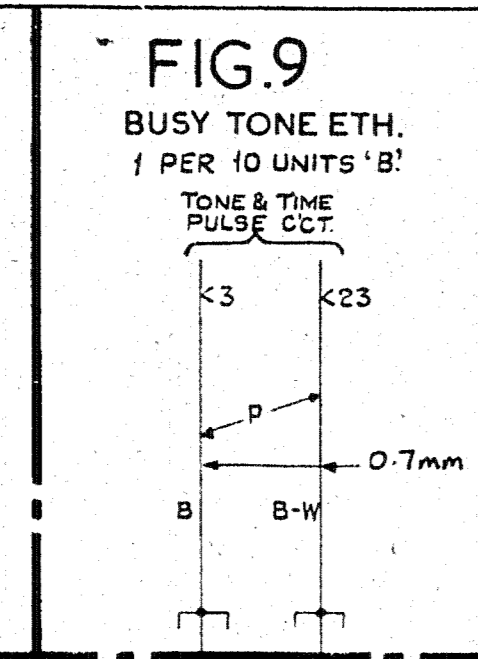
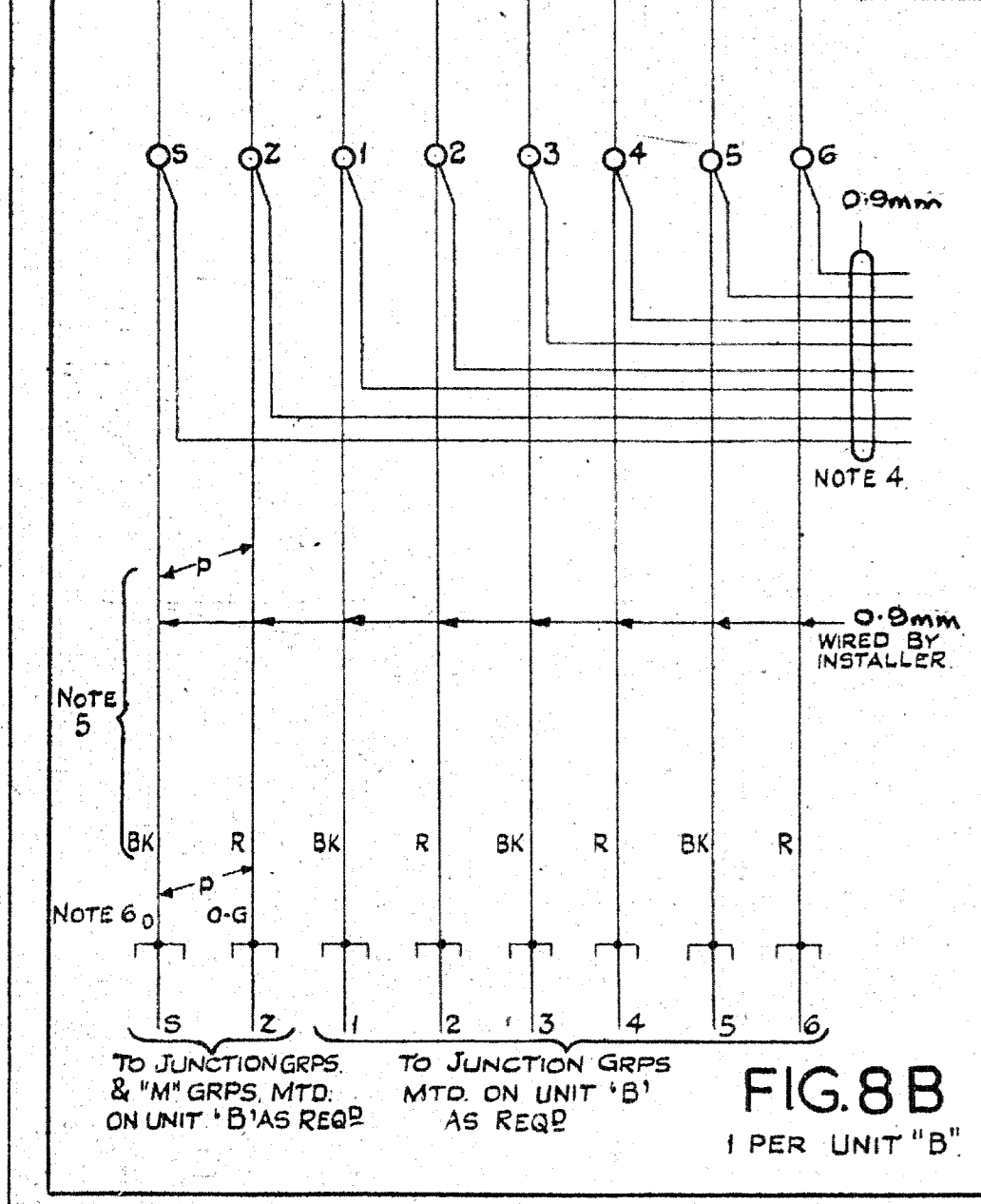
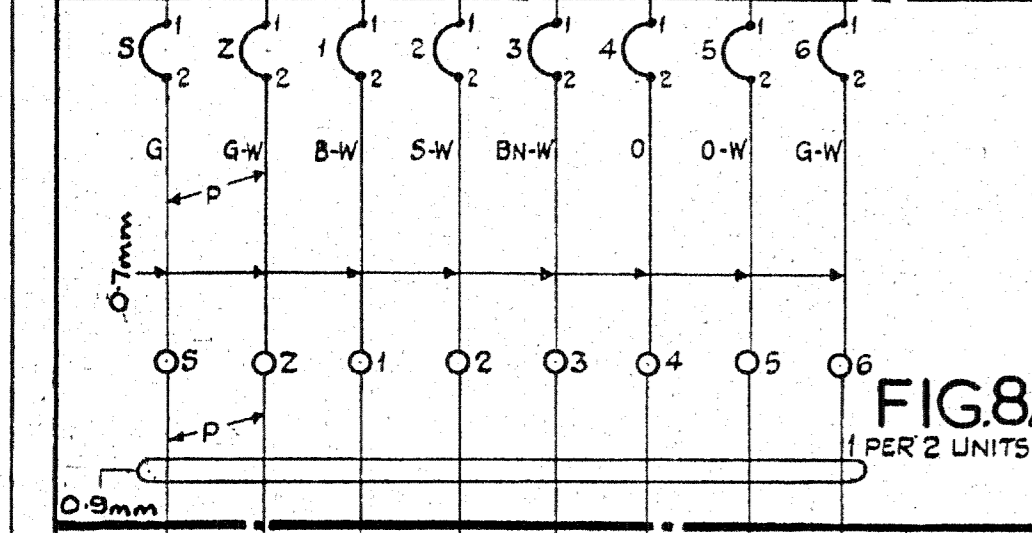
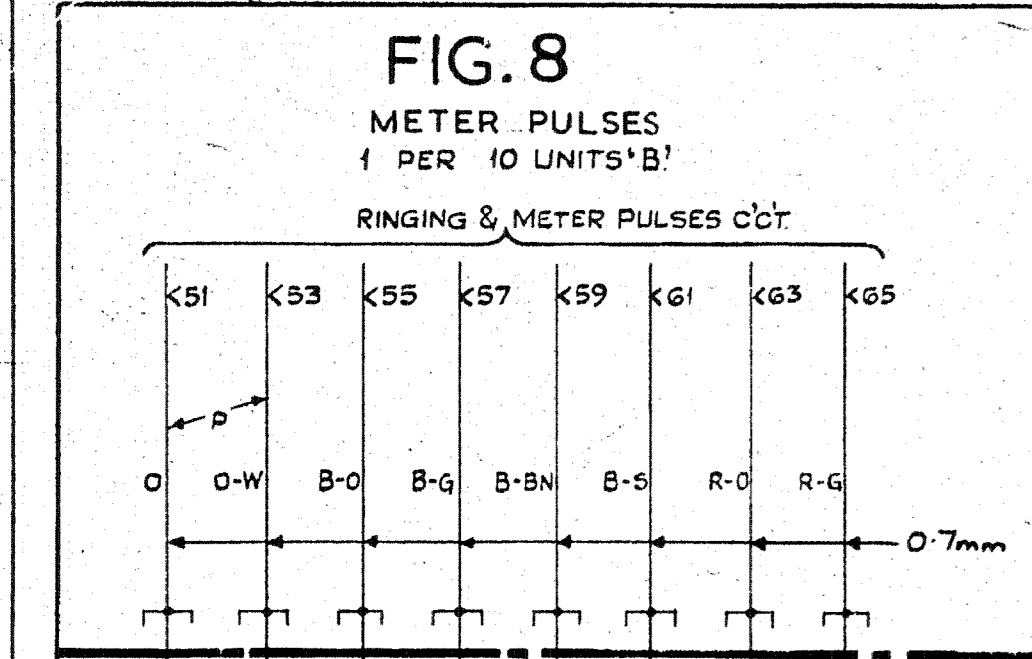
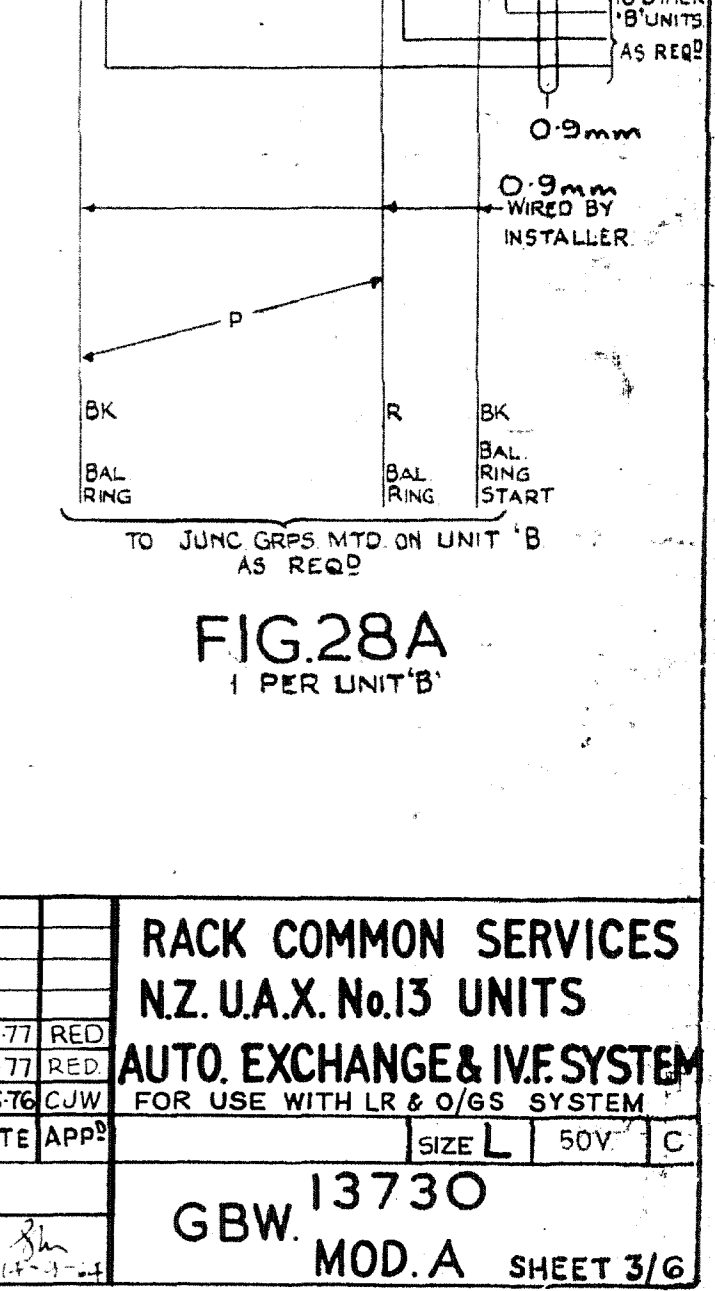
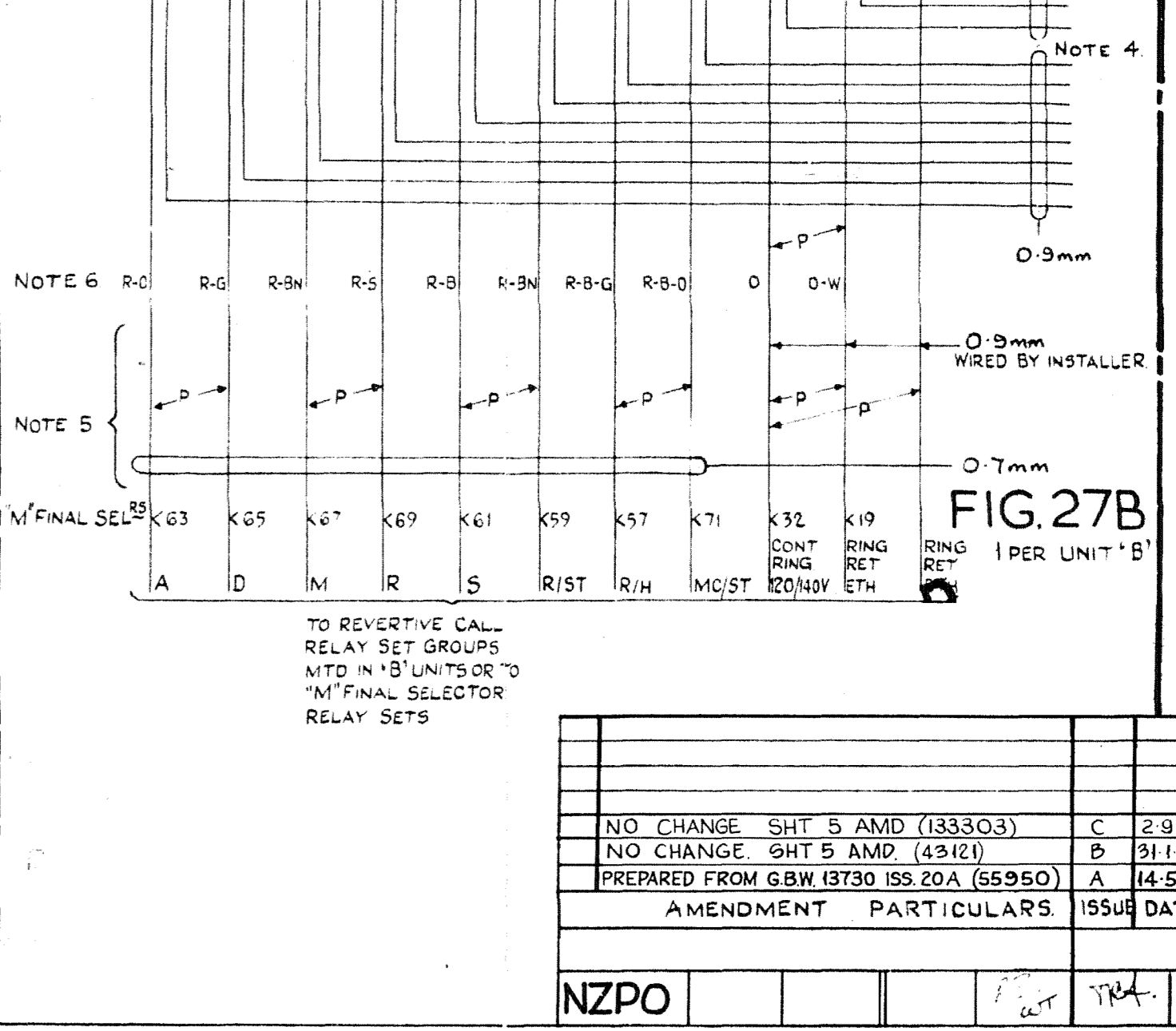
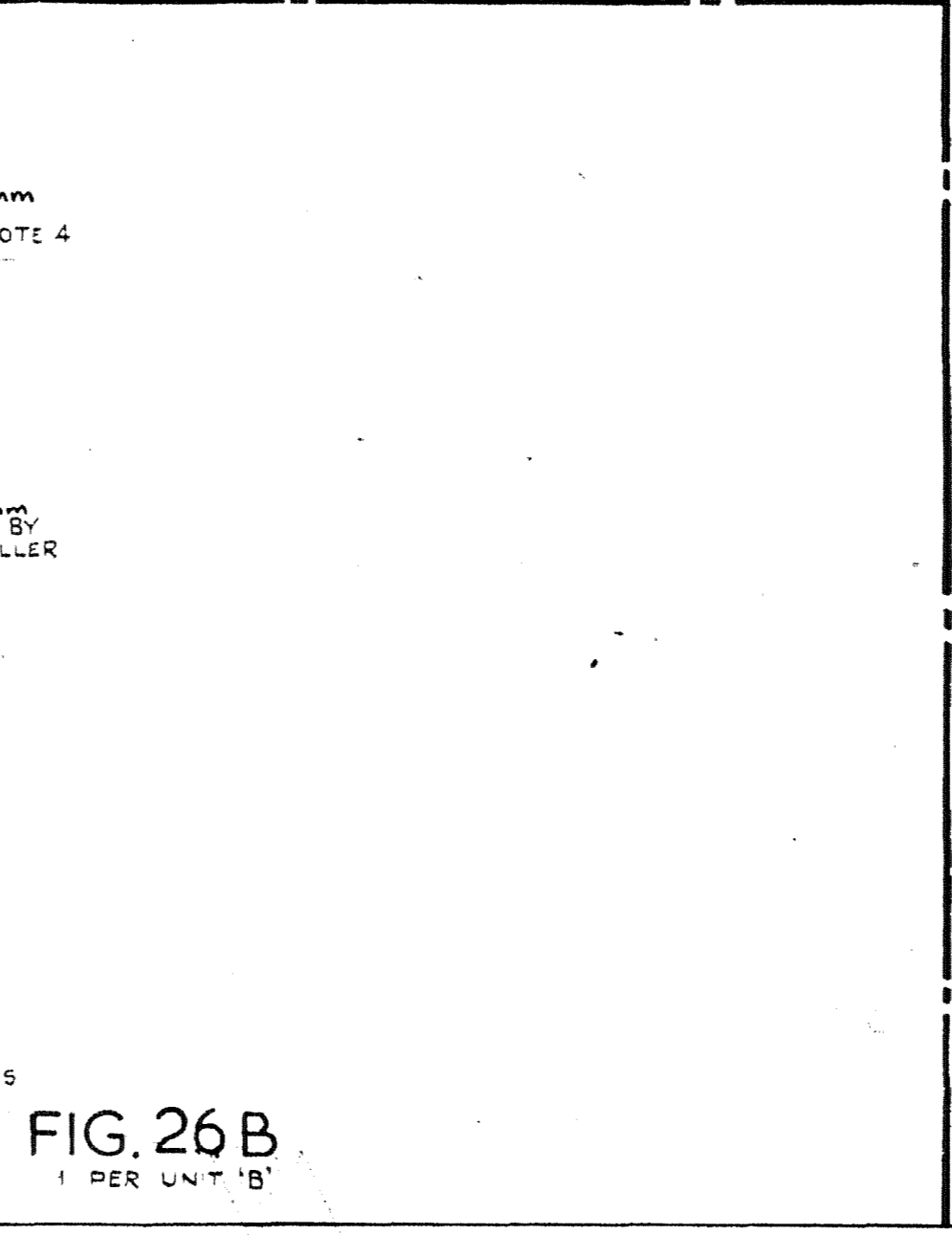
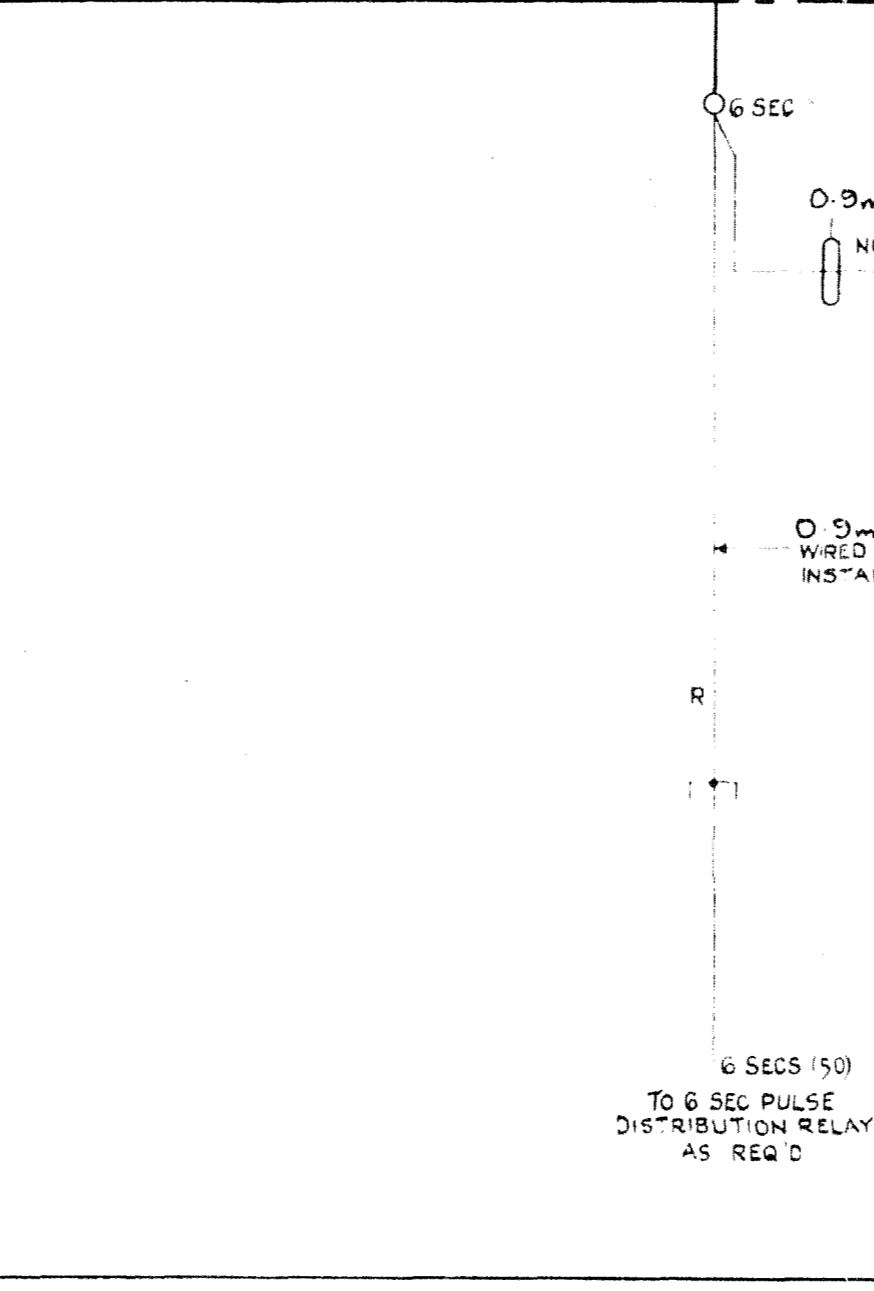
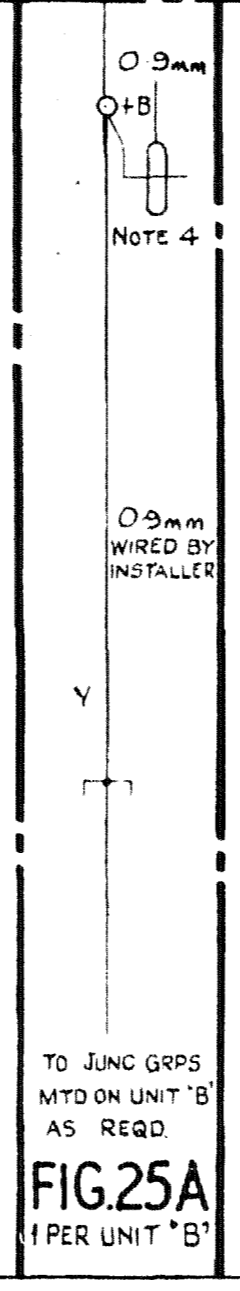
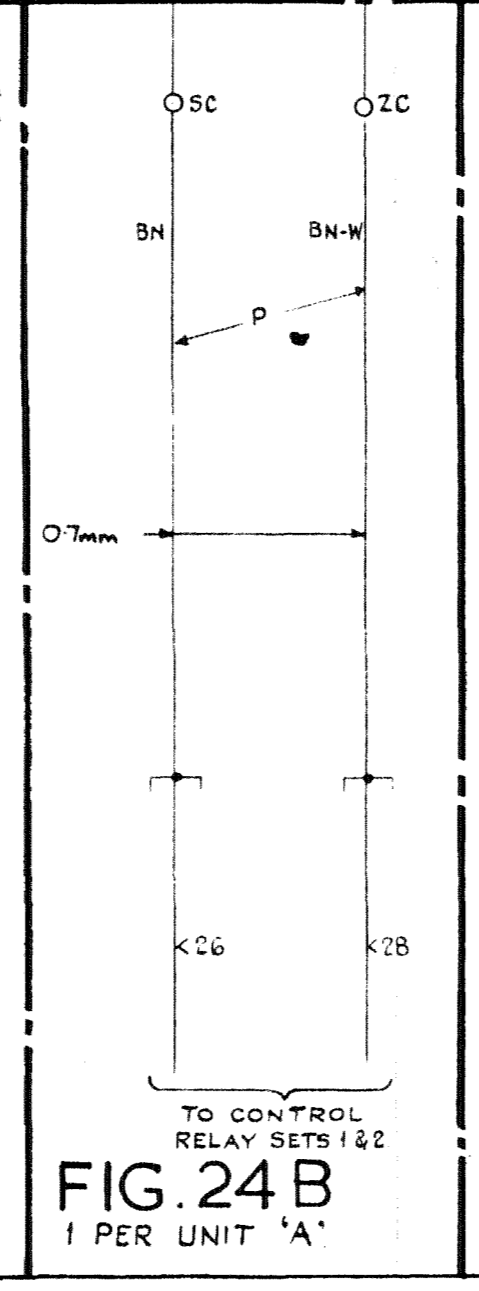
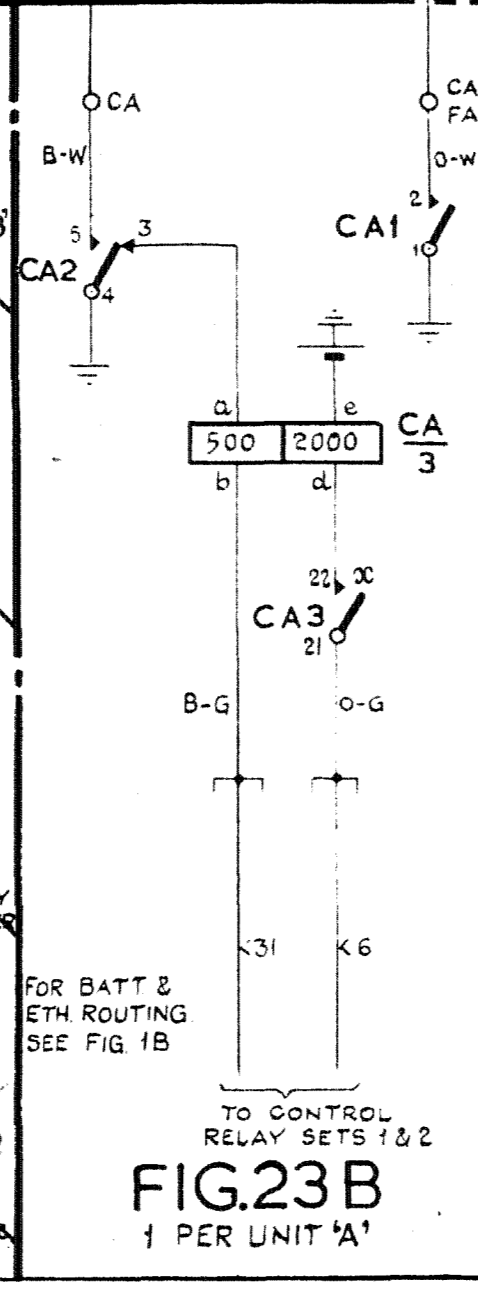
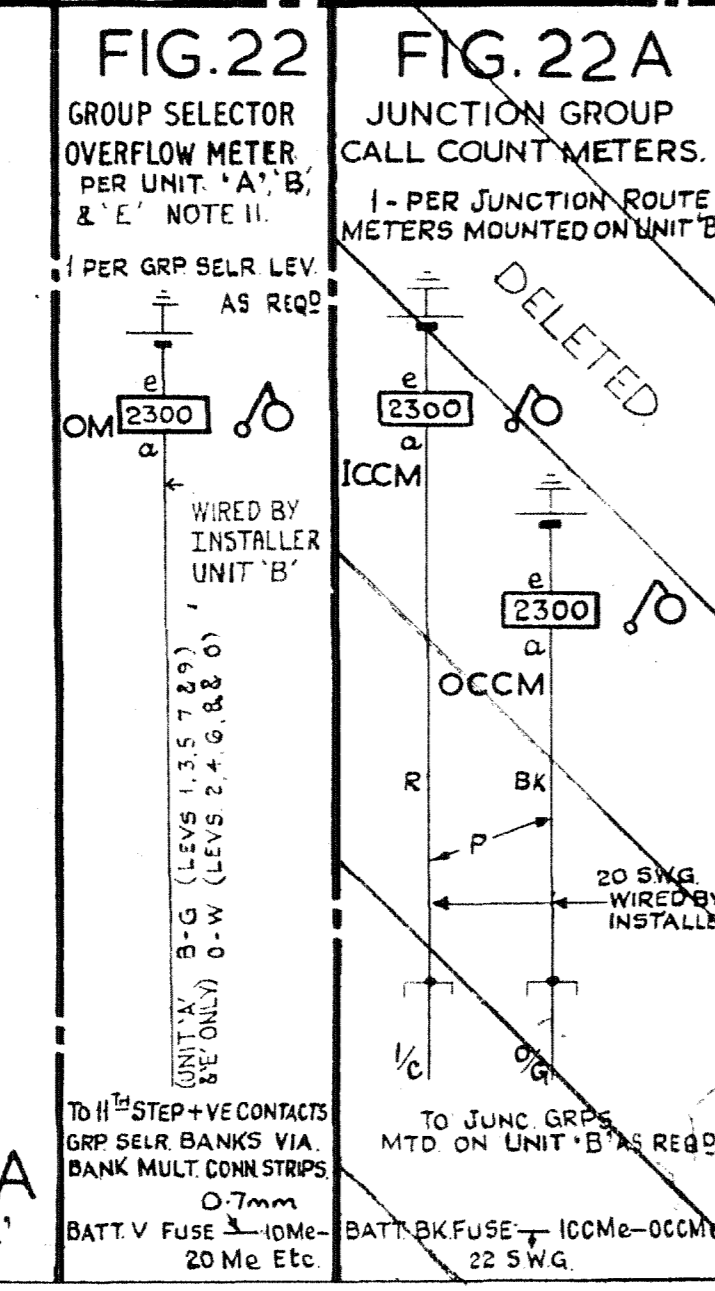
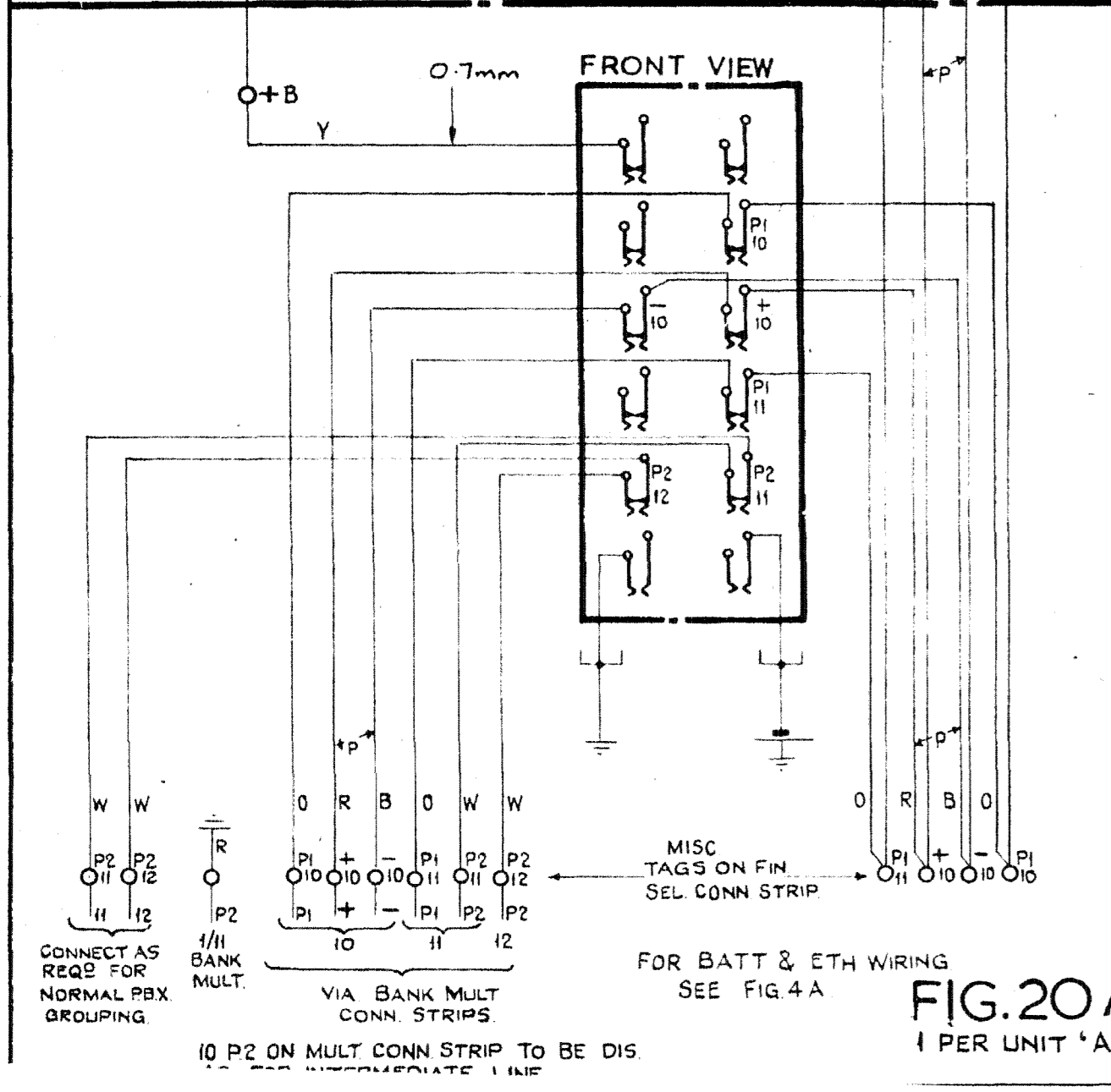
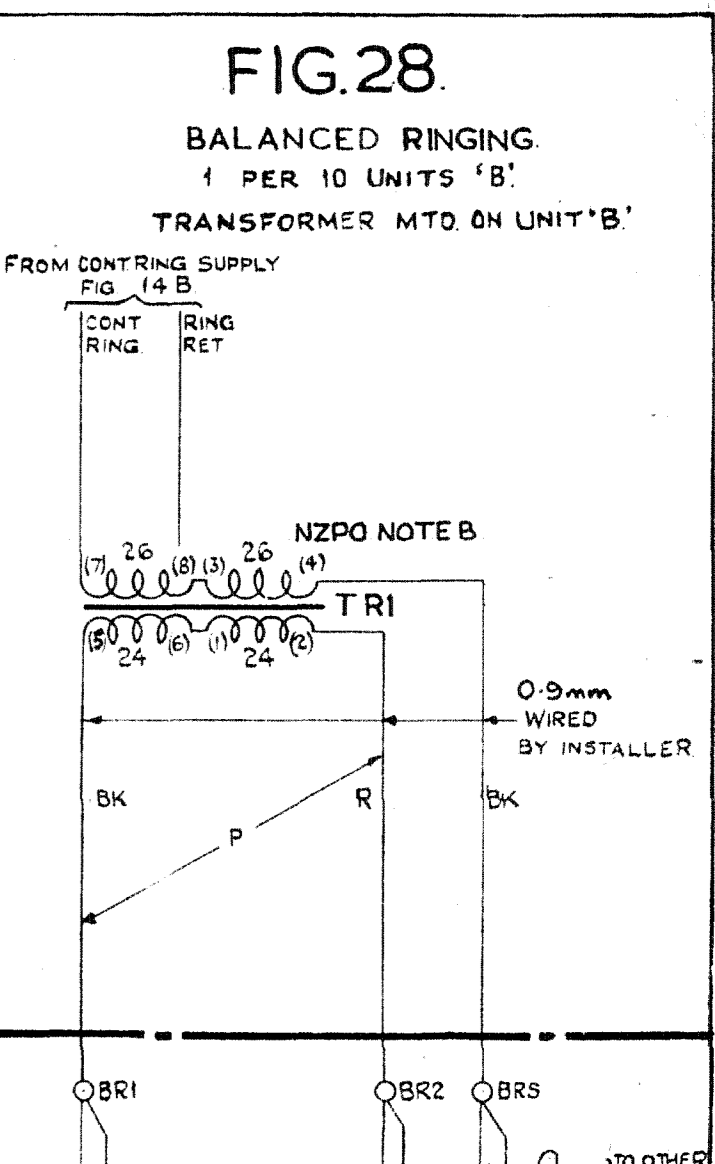
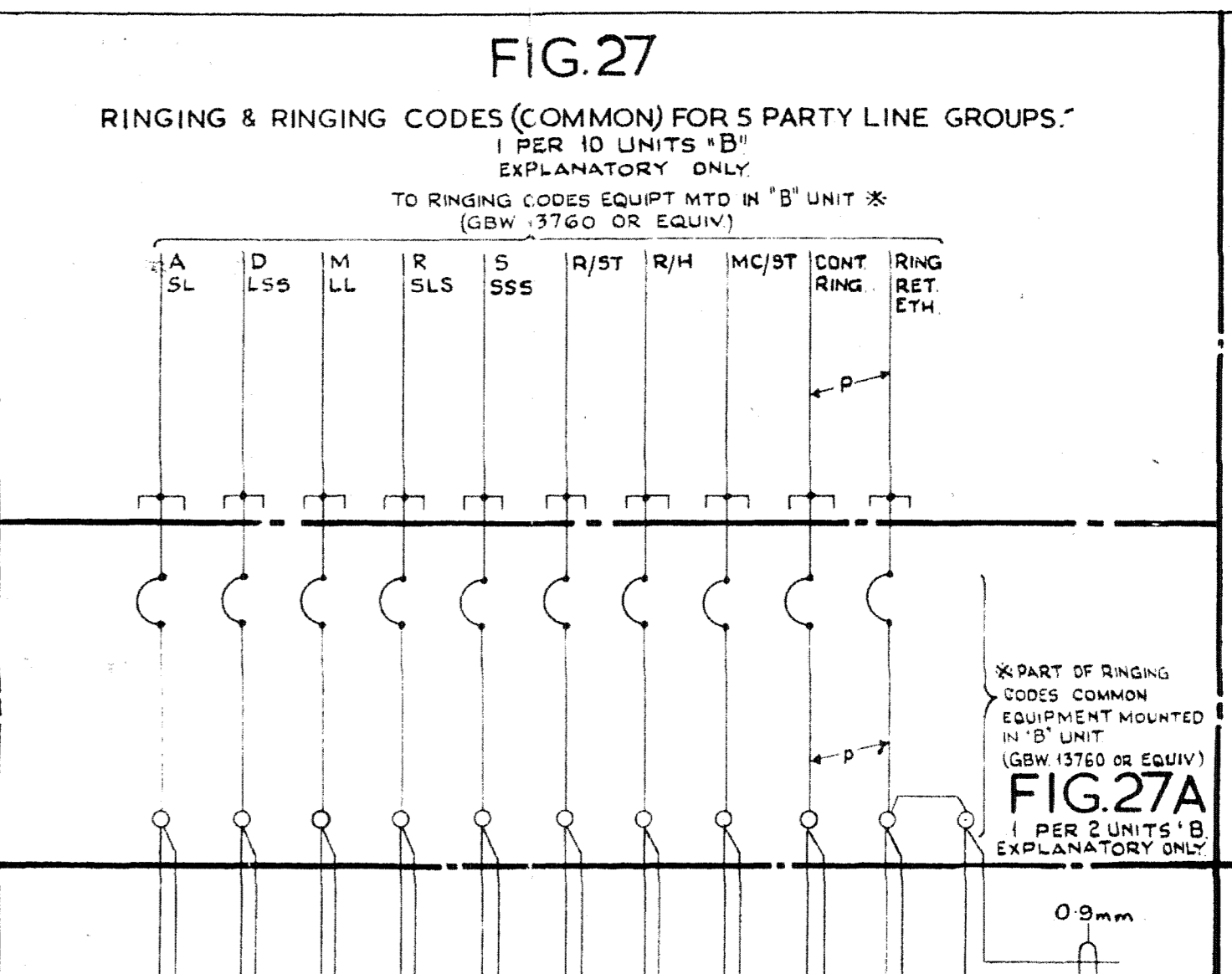
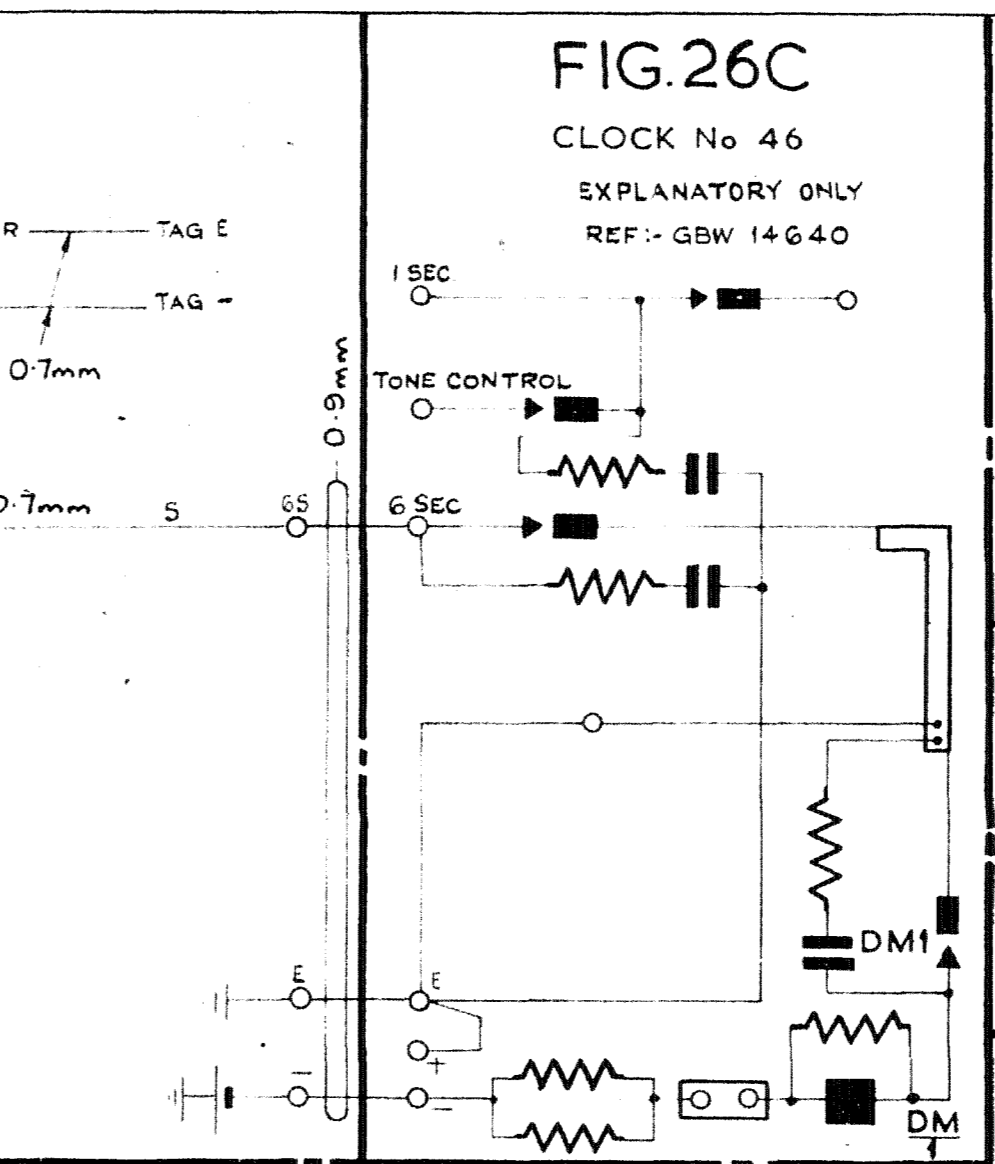
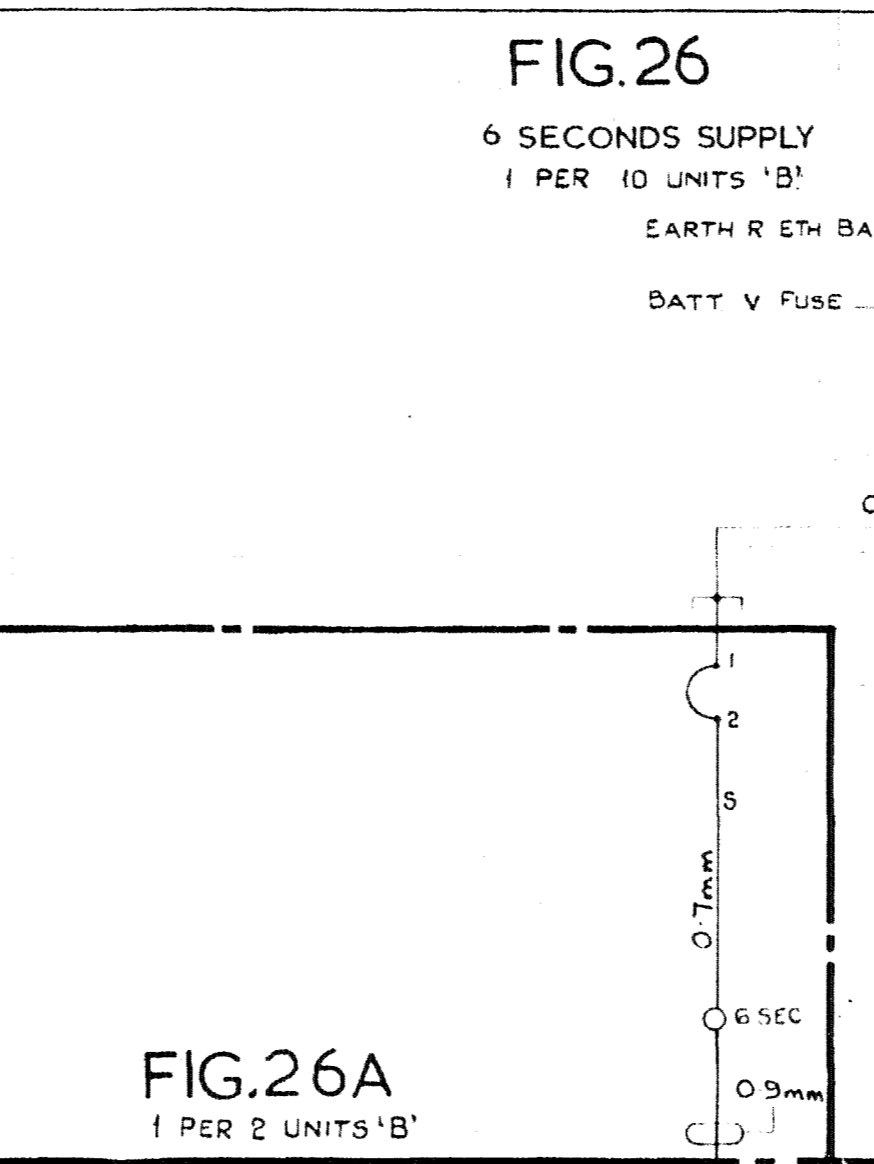
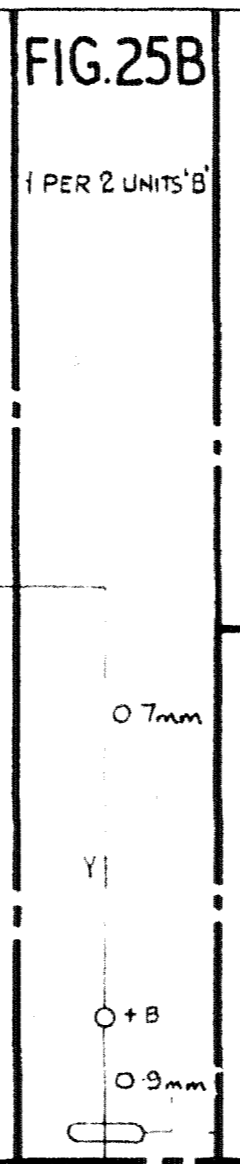
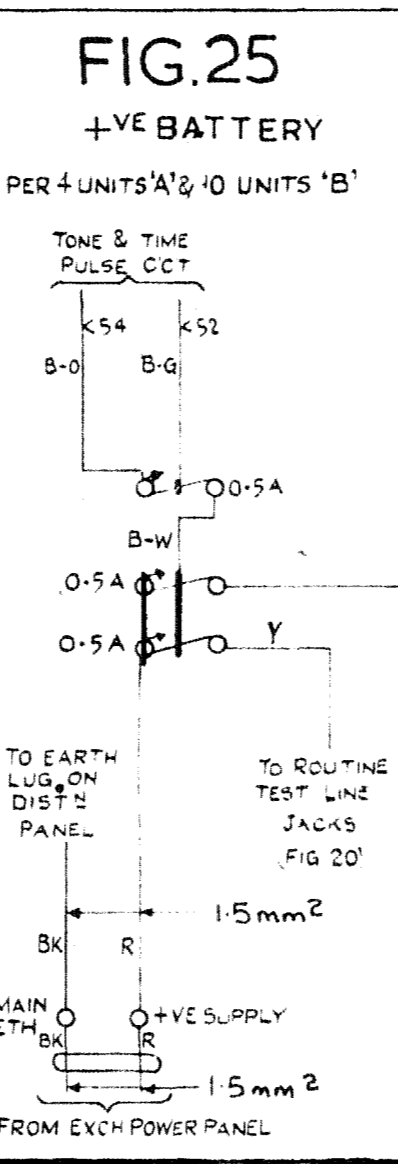
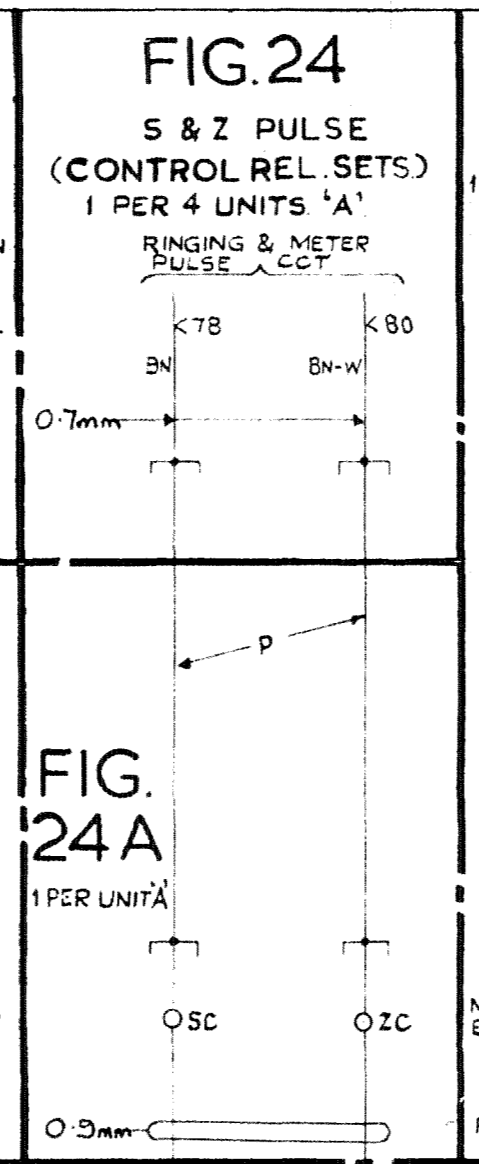
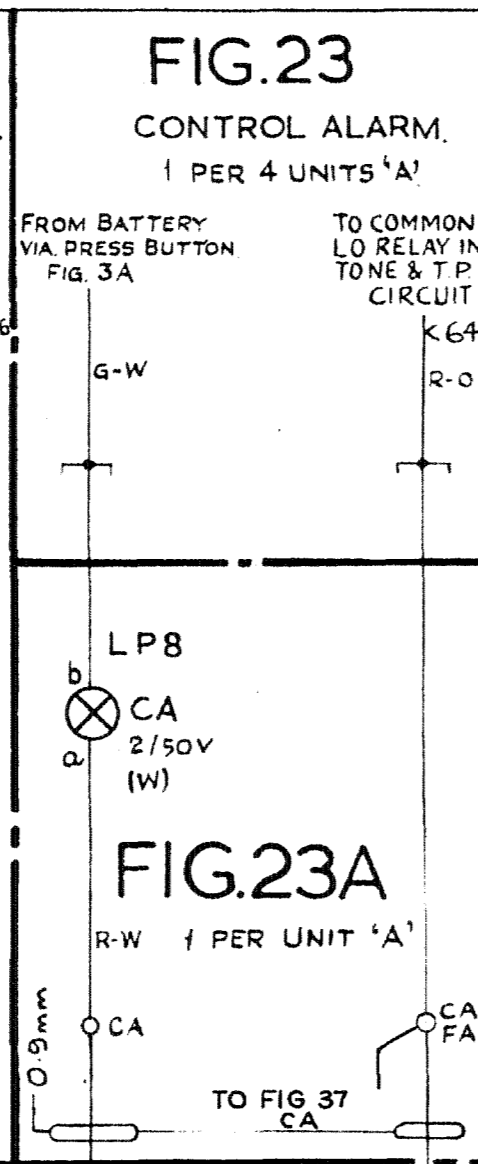
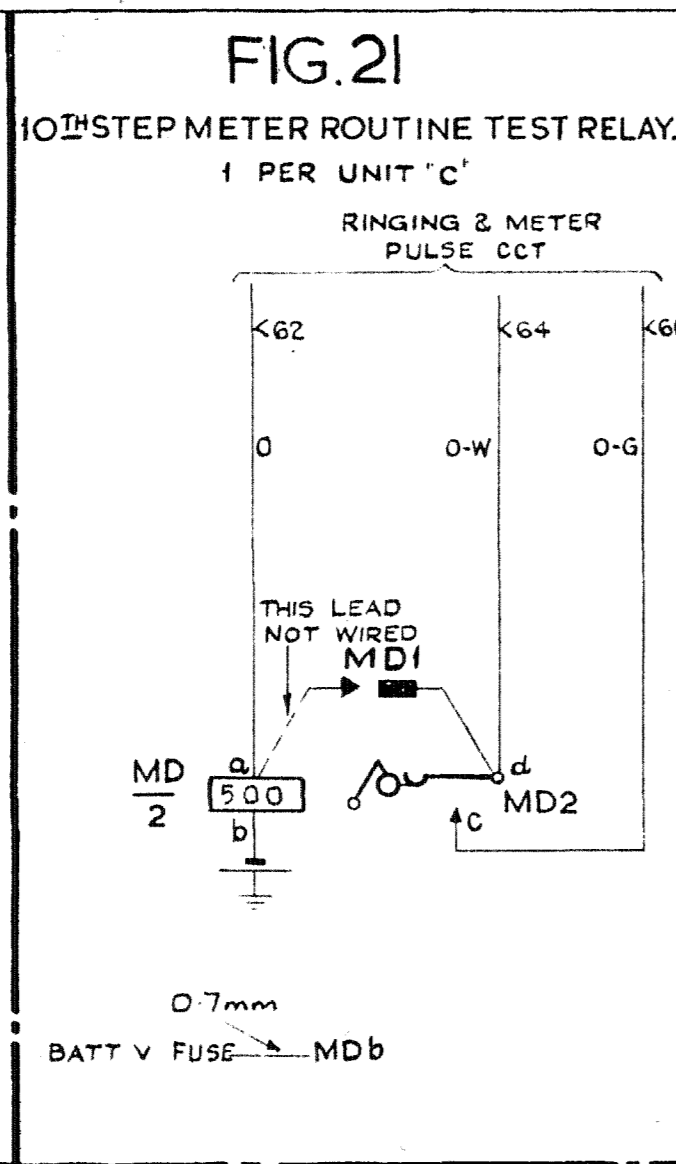
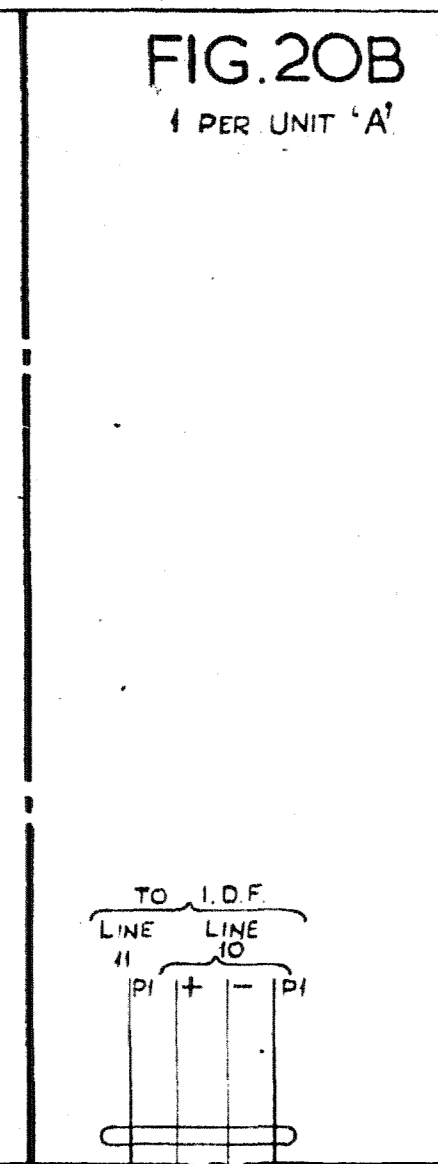
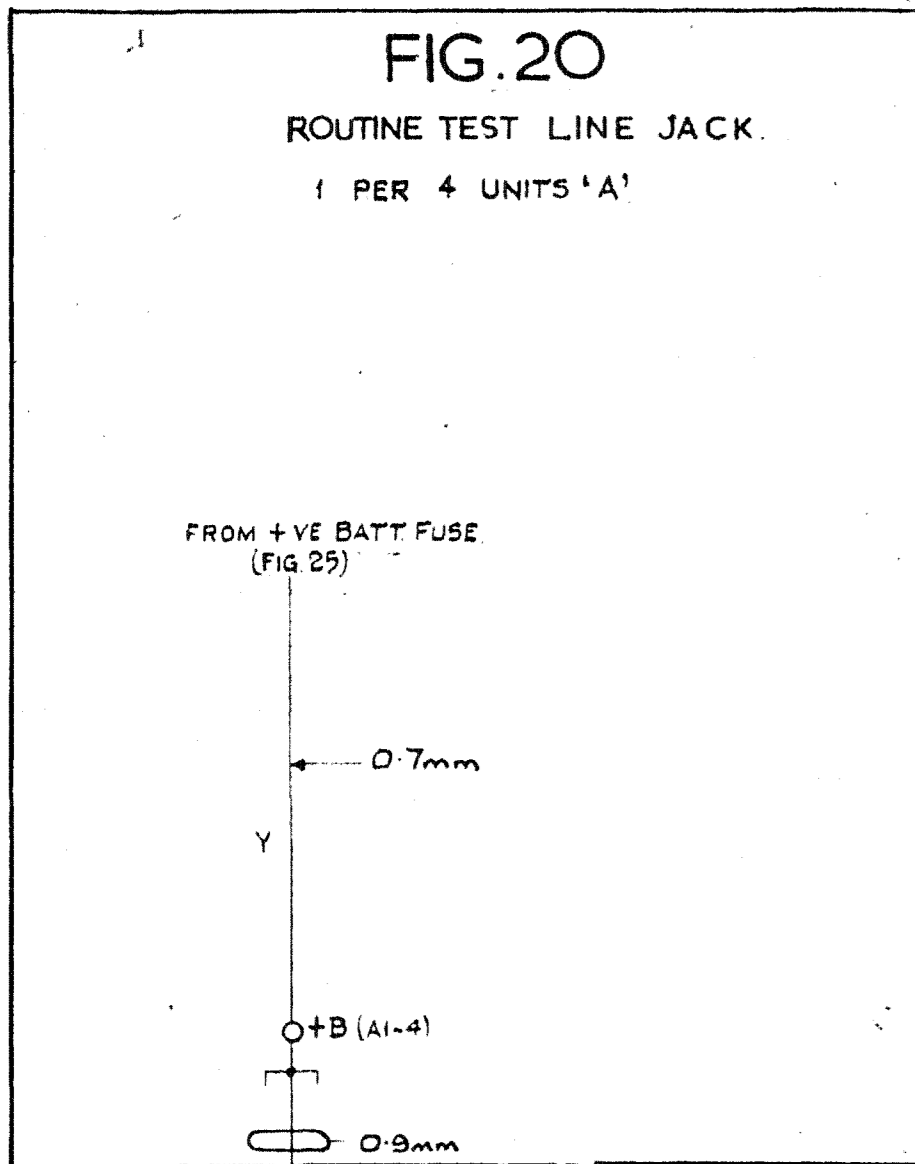


Table with columns for NZPO, RACK COMMON SERVICE, N.Z. UAX. #913 UNITS, AUTO. EXCHANGE & MFSYS, AMENDMENT, PARTICULARS, ISSUE DATE, APP, SIZE, and GBW. 13730 MOD. A



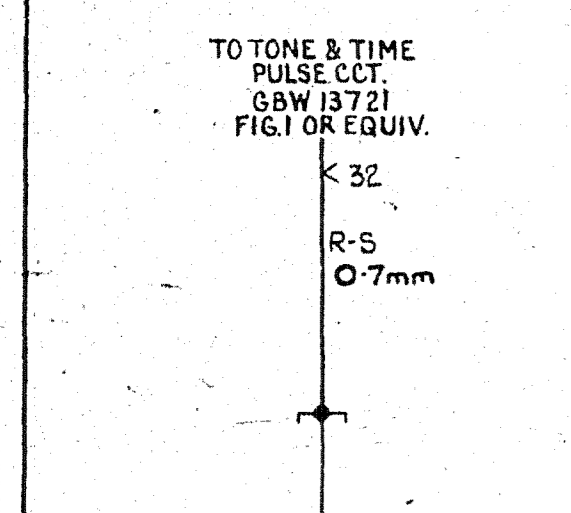
RACK COMMON SERVICES			
N.Z. U.A.X. No. 13. UNITS			
AUTO. EXCHANGE & IVF. SYSTEM			
FOR USE WITH LR & O/GS SYSTEM.			
AMENDMENT	PARTICULARS	ISSUE DATE	APP'D.
	NO CHANGE SHT 5 AMD (133303)	C	2.9.77 RED
	NO CHANGE SHT 5 AMD (43121)	B	21.1.77 RED
	PREPARED FROM GBW 13730 ISS. 20A (55950)	A	14.5.76 CJW
NZPO			

GBW 13730 MOD. A SHEET 2/6

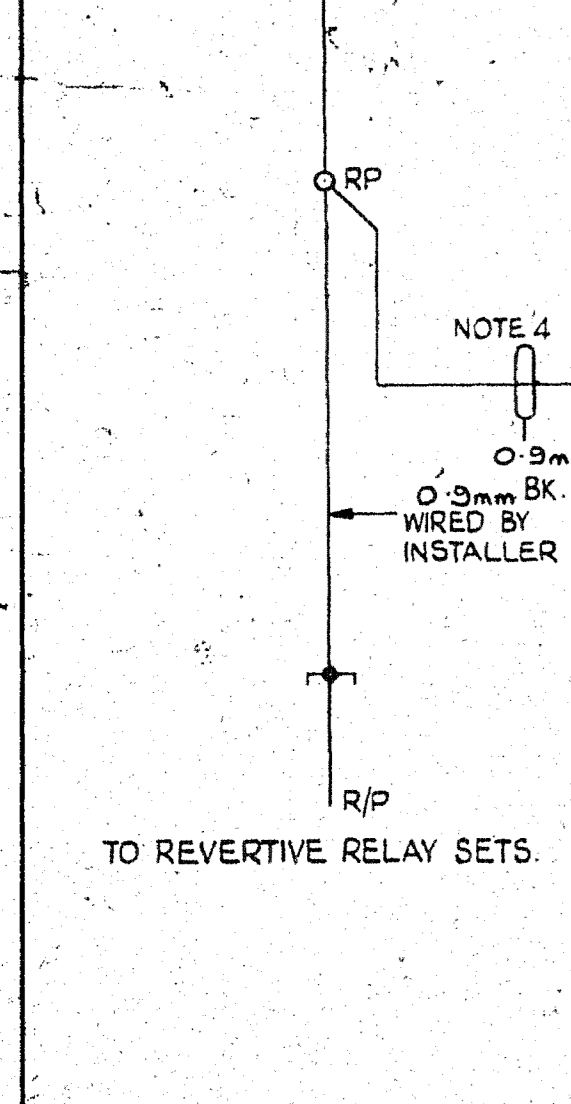
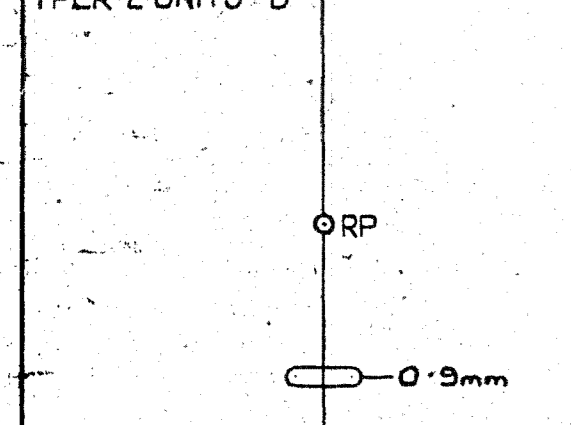


RACK COMMON SERVICES			
NZ.U.A.X. No.13 UNITS			
AUTO. EXCHANGE & IVF. SYSTEM			
FOR USE WITH LR & O/GS SYSTEM			
AMENDMENT	PARTICULARS	ISSUE DATE	APP'D
NO CHANGE	SHT 5 AMD (133303)	C	2-9-77 RED
NO CHANGE	SHT 5 AMD (4312)	B	31-1-77 RED
PREPARED FROM	GBW 13730 ISS. 20A (55950)	A	14-5-76 CJW
SIZE L 50V C			
NZPO			

**FIG.29** REVERTIVE PULSE  
1 PER 10 UNITS 'B'

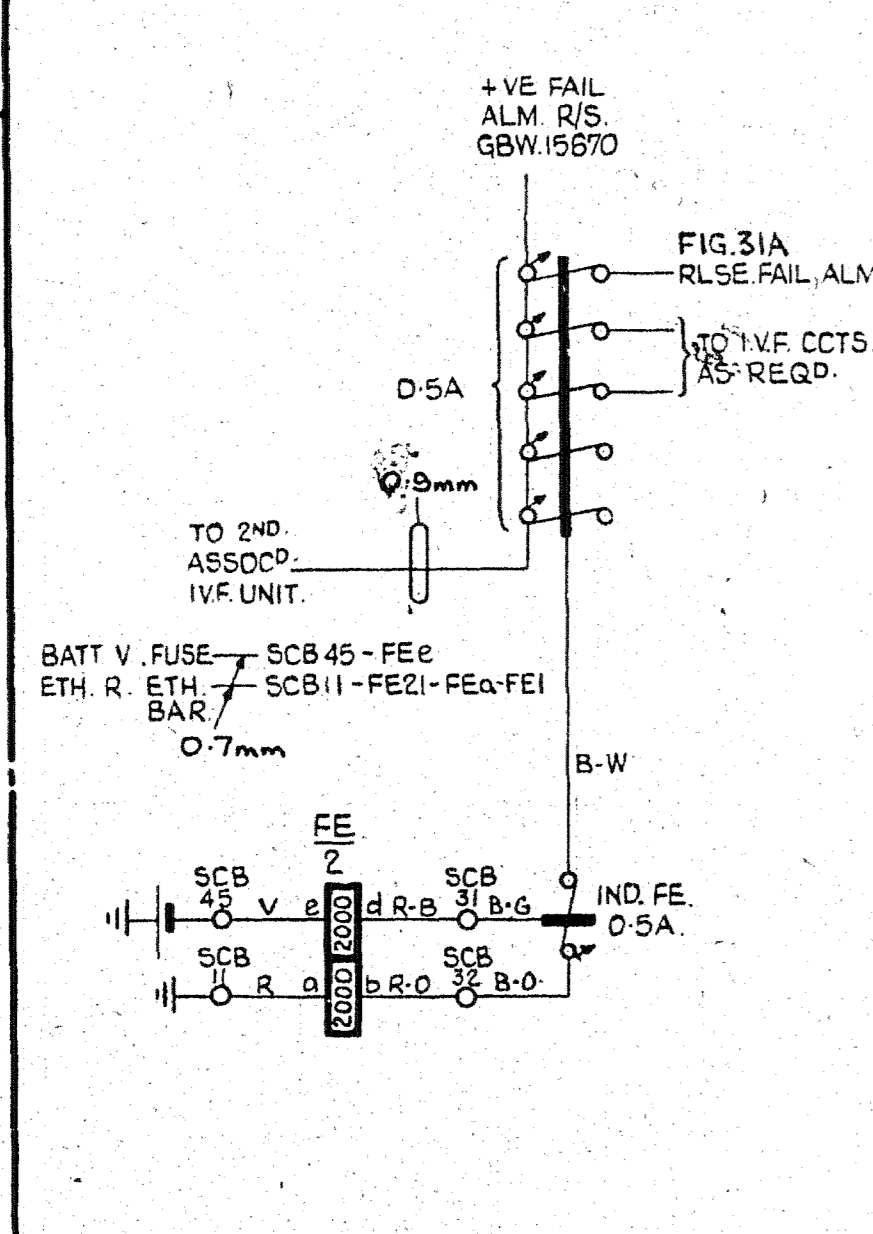
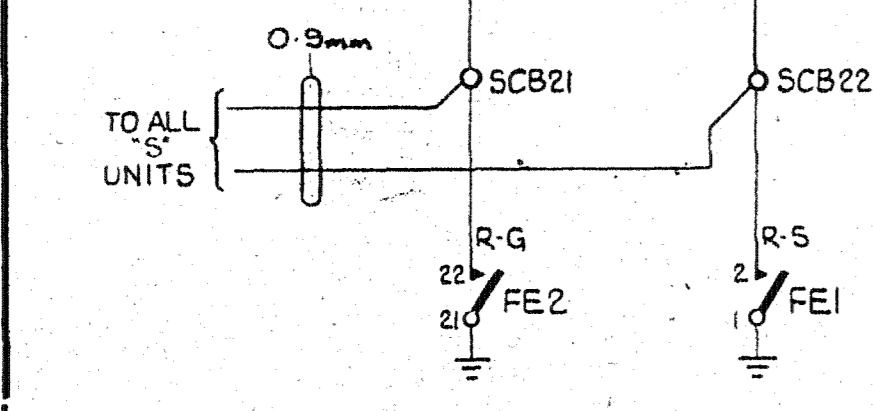
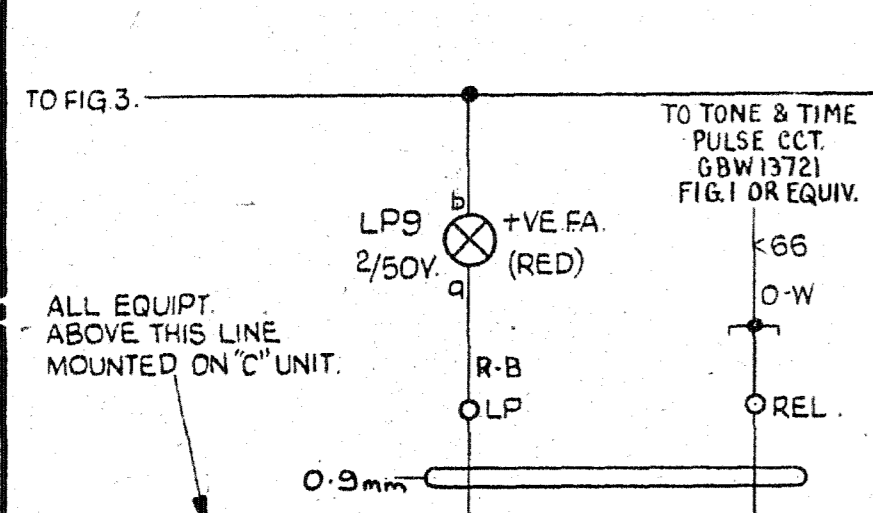


**FIG.29A**  
1 PER 2 UNITS 'B'



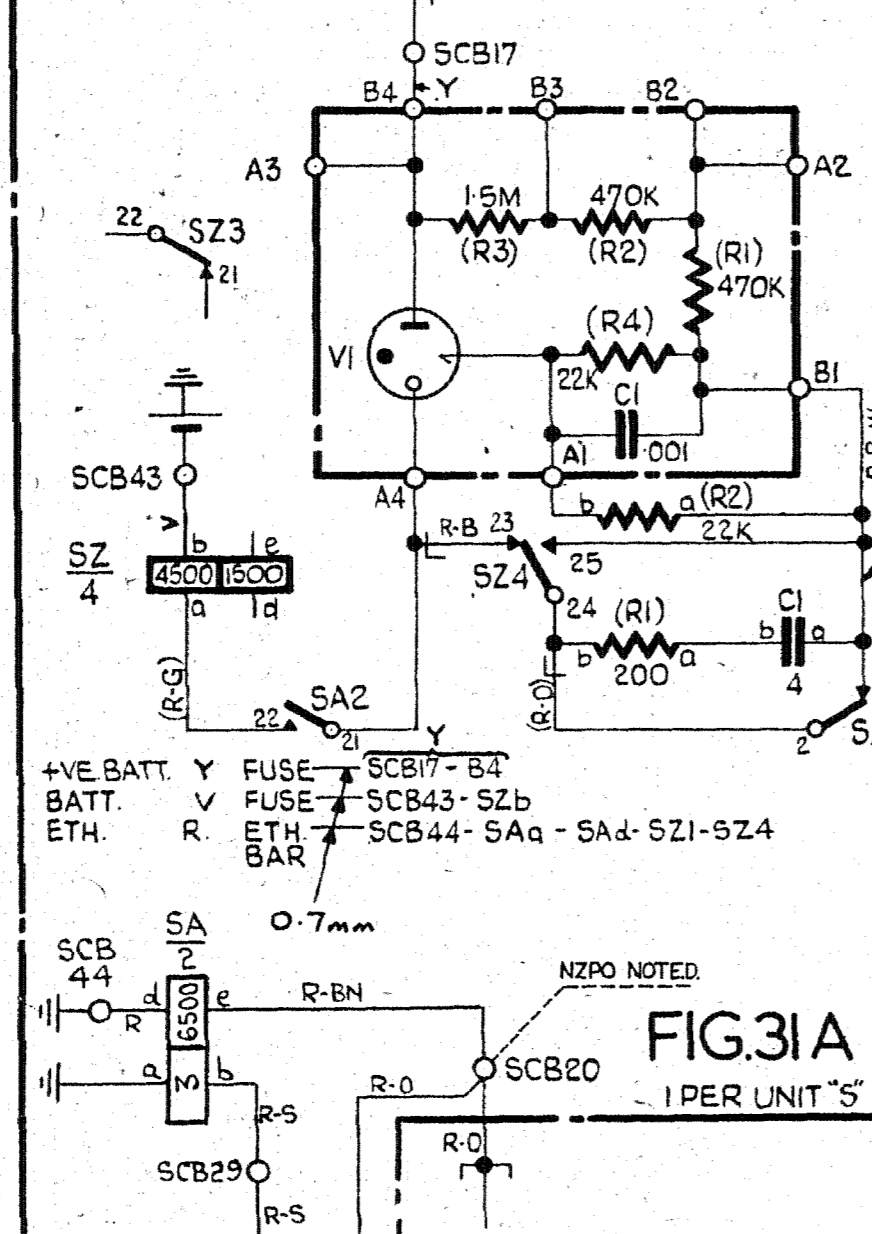
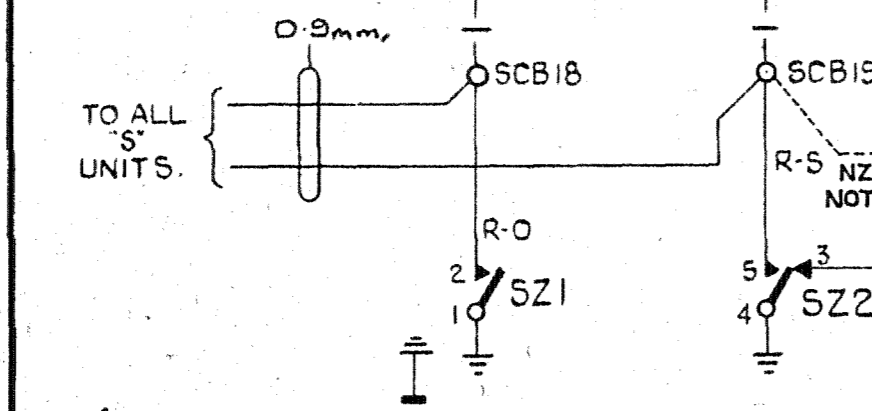
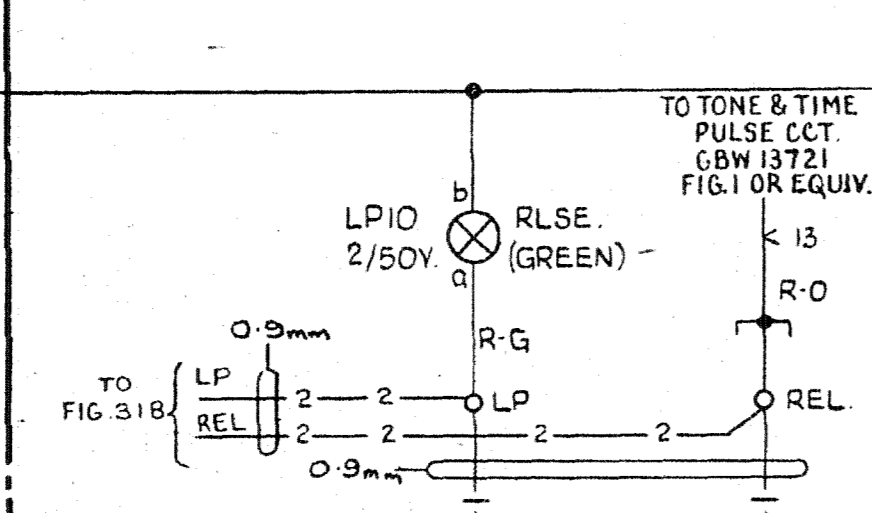
**FIG.29B** 1 PER UNIT 'B'

**FIG.30** FUSE ALARM POSITIVE BATTERY SUPPLY  
1 PER GRP. OF UNITS 'S'



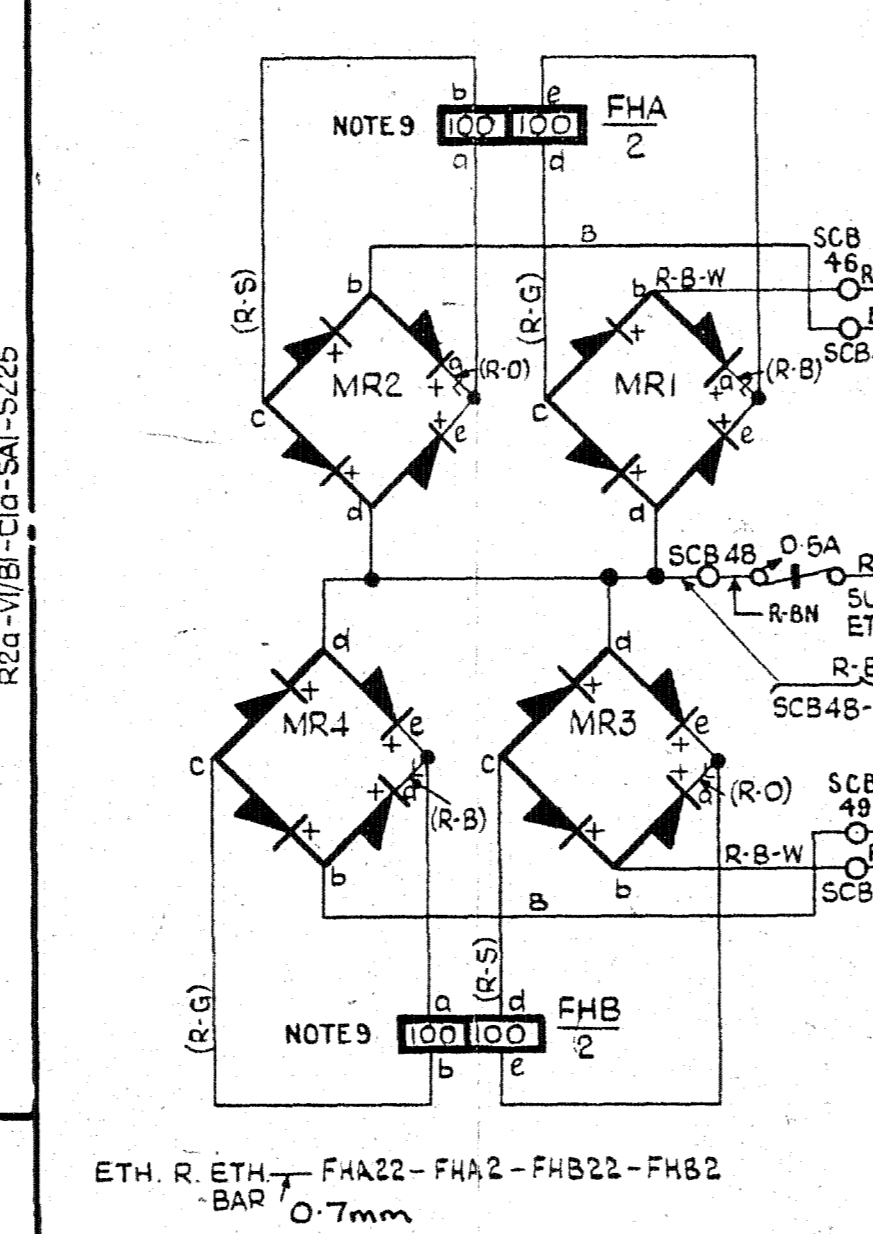
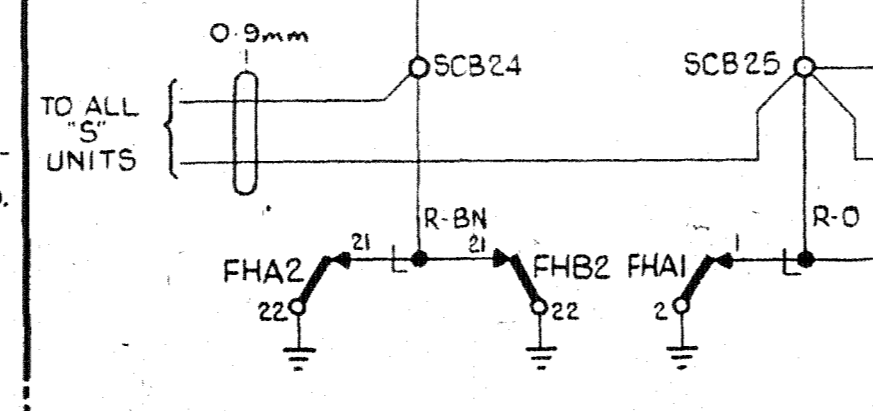
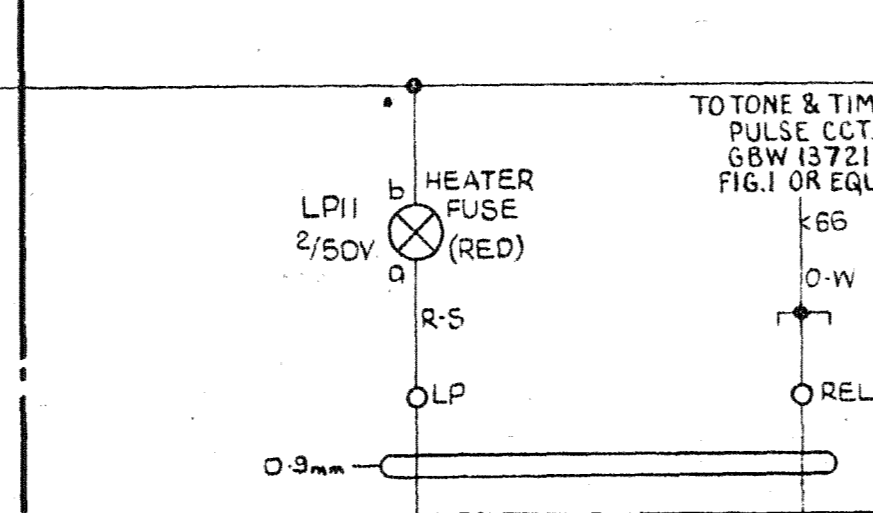
**FIG.30A** 1 PER UNIT 'S'

**FIG.31** RELEASE FAILURE ALARM (10 SECS APPROX.)  
1 PER GRP. OF UNITS 'S'



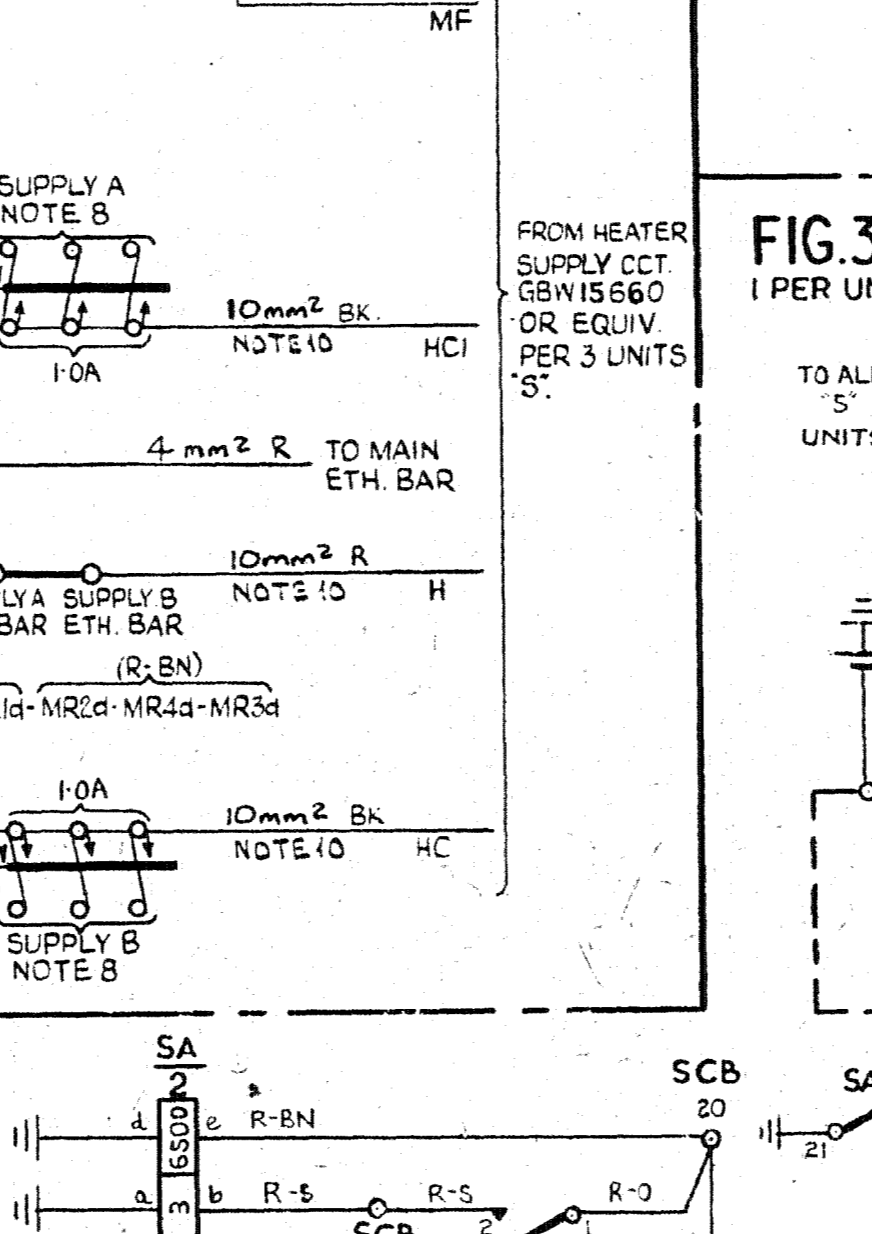
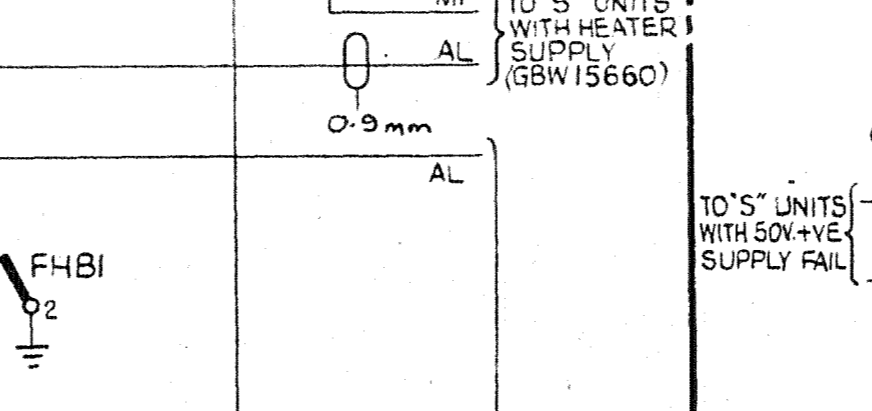
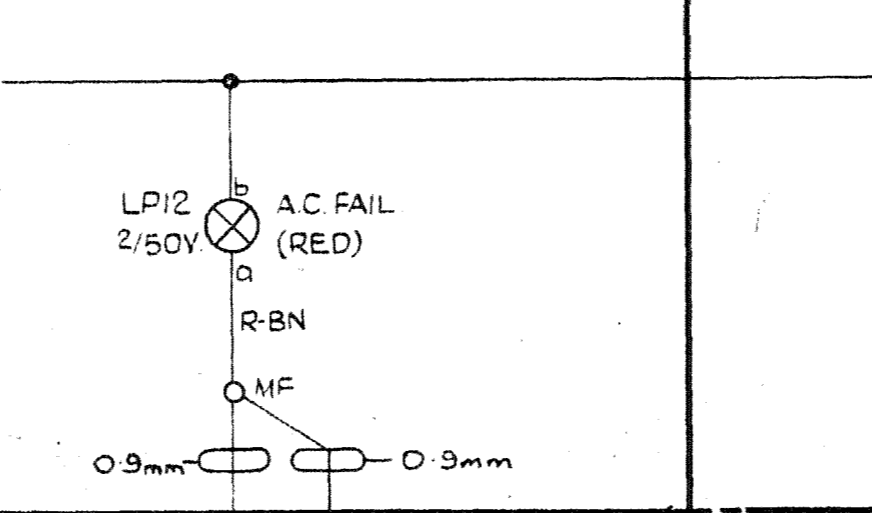
**FIG.31A** 1 PER UNIT 'S'

**FIG.32** FUSE ALARM HEATER SUPPLY (I.V.F.)  
1 PER GRP. OF UNITS 'S'



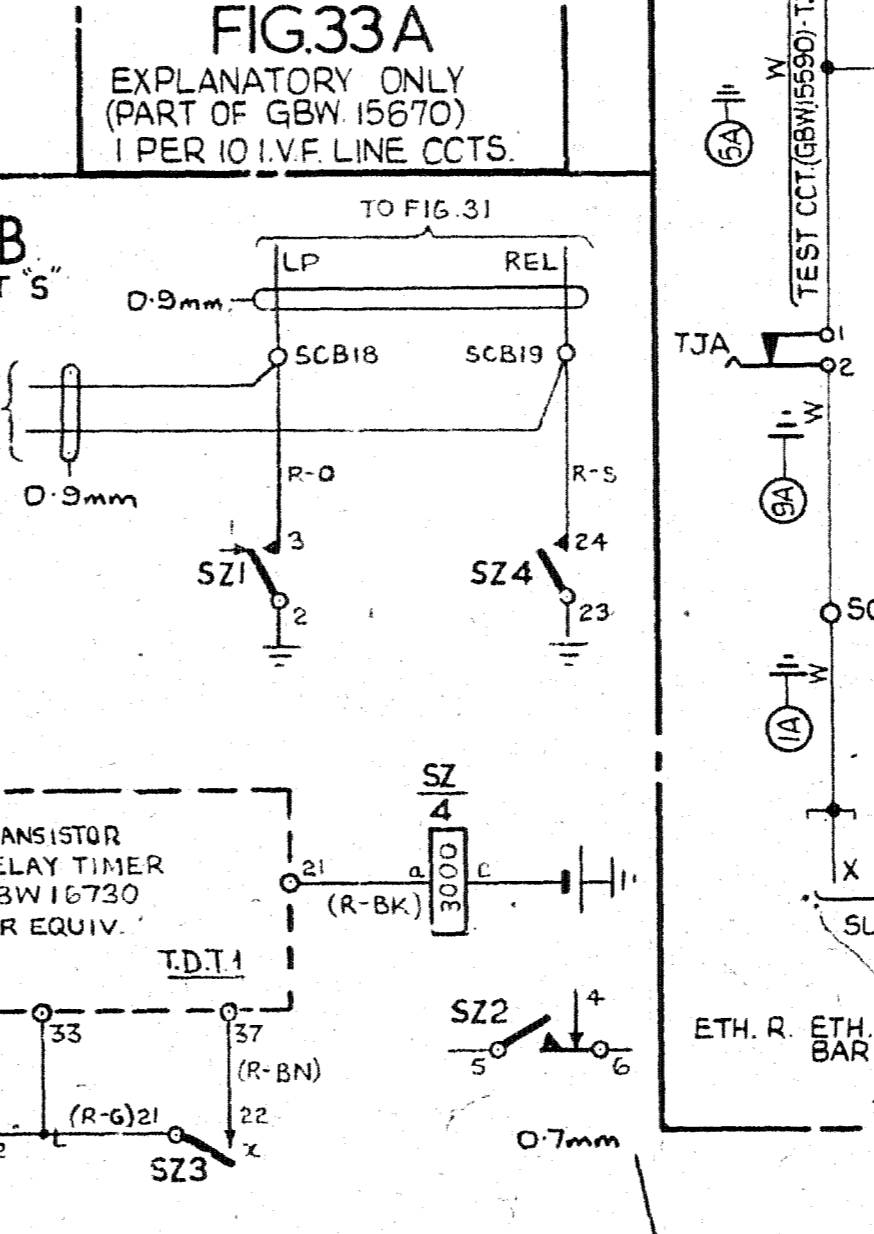
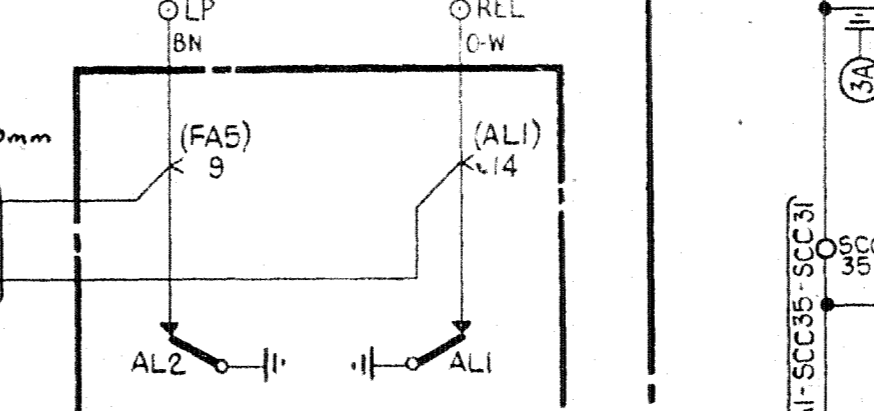
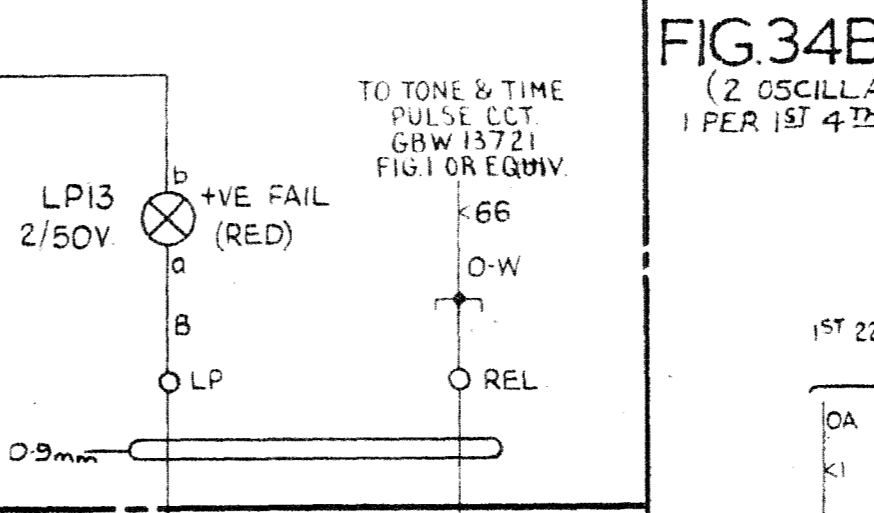
**FIG.32A** 1 PER UNIT 'S'

**FIG.33** 50V POSITIVE SUPPLY FAIL ALARM  
1 PER GRP. OF UNITS 'S'



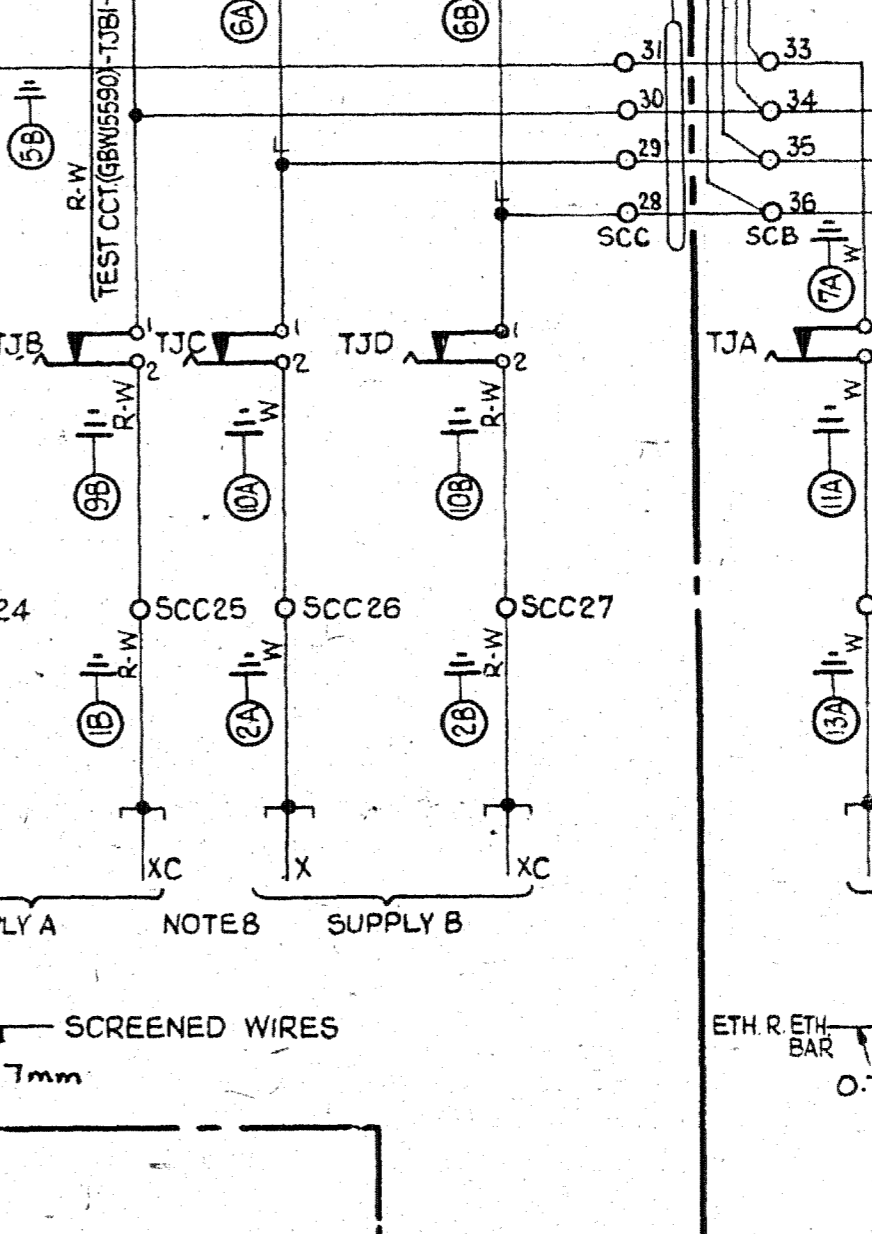
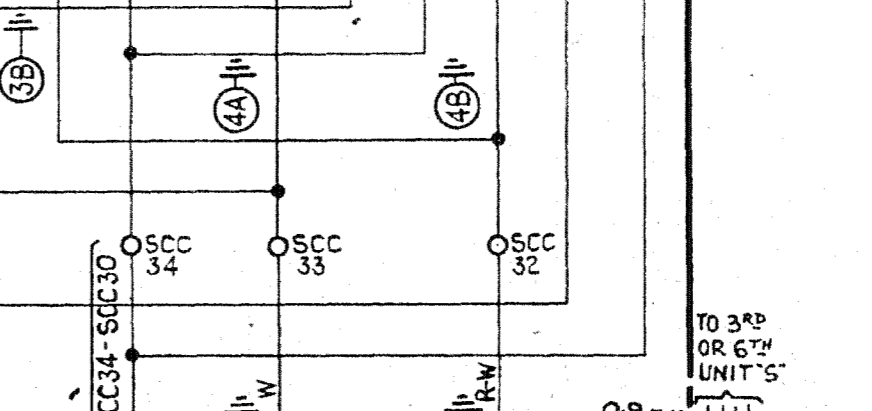
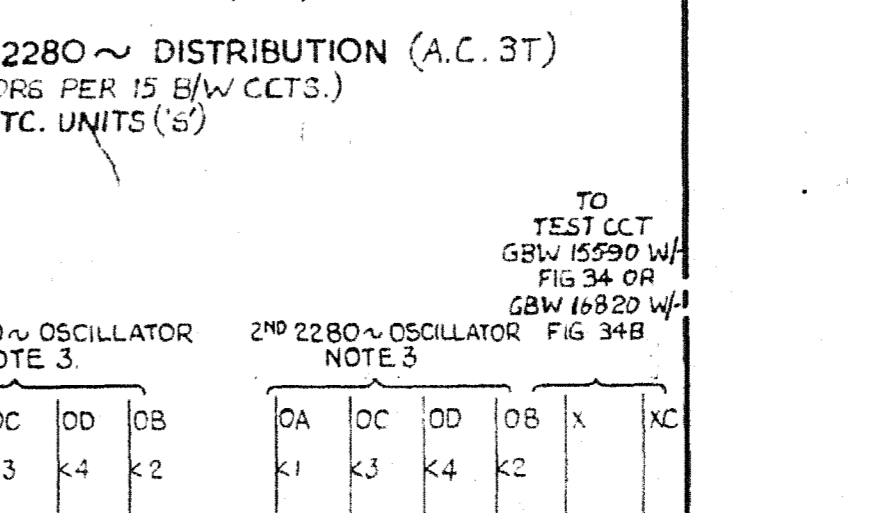
**FIG.33A** EXPLANATORY ONLY (PART OF GBW 15670)  
1 PER 10 I.V.F. LINE CCTS.

**FIG.34** 2280~ DISTRIBUTION (A.C. 3)  
(2 OSCILLATORS PER 15 B/W CCTS.)  
1 PER 1ST, 4TH ETC. UNITS ('S')



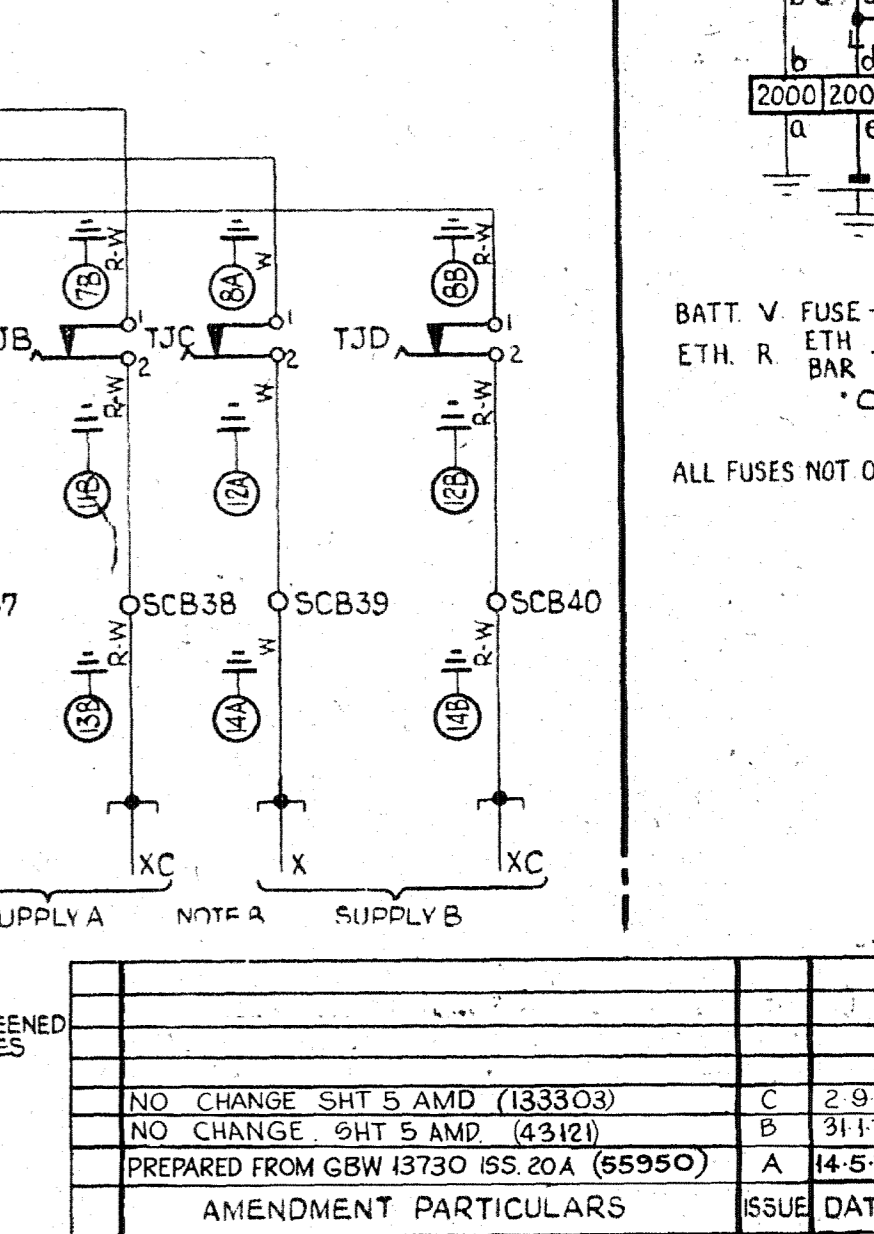
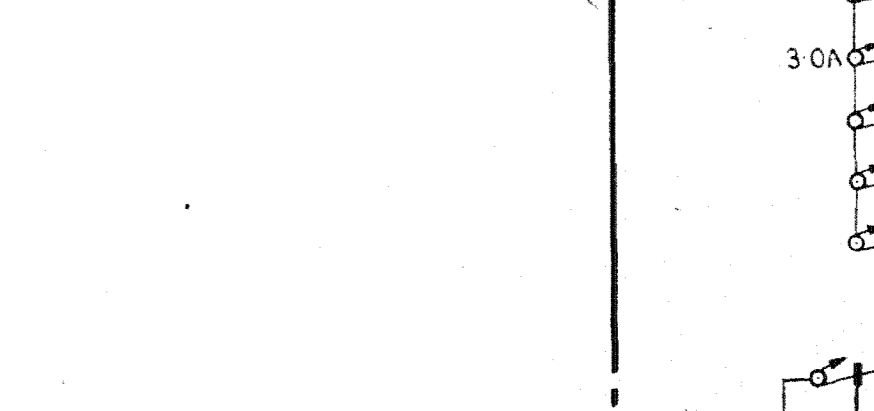
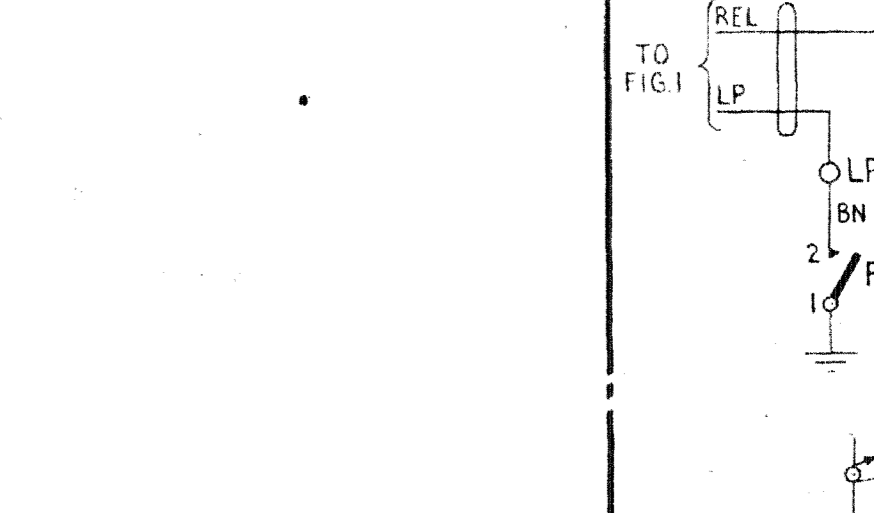
**FIG.34B** 2280~ DISTRIBUTION (A.C. 3T)  
(2 OSCILLATORS PER 15 B/W CCTS.)  
1 PER 1ST 4TH ETC. UNITS ('S')

**FIG.35** 50V -VE BATT FUSE ALARM  
& OSCILLATOR FAIL ALARM.  
1 PER UNIT ('S')



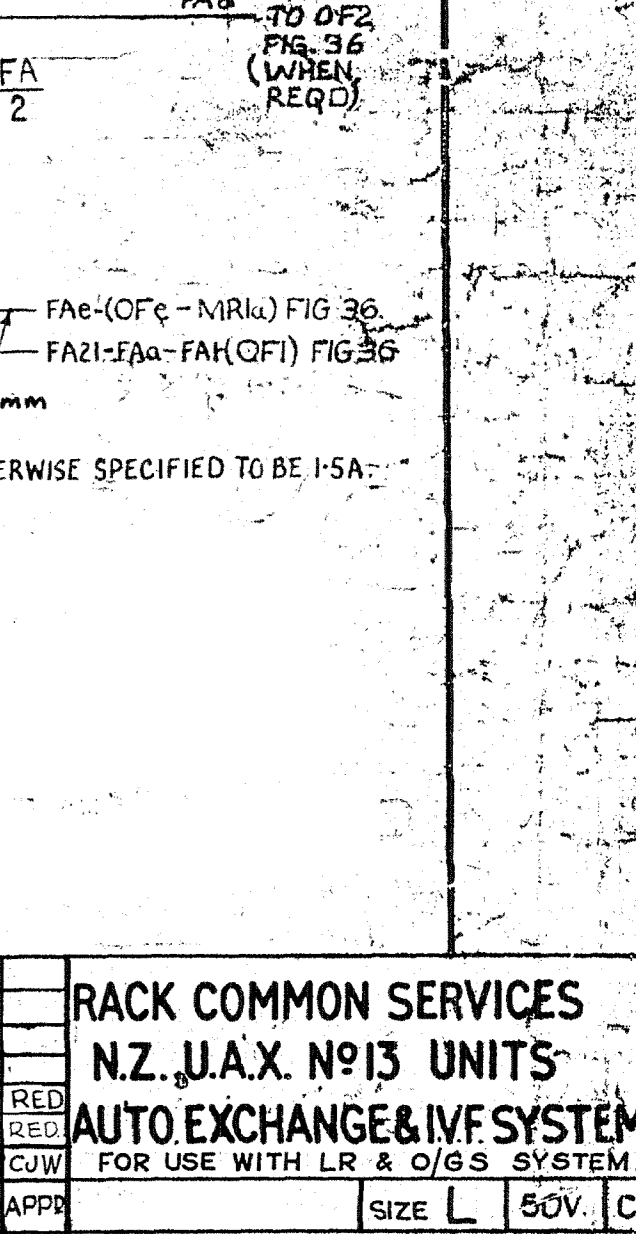
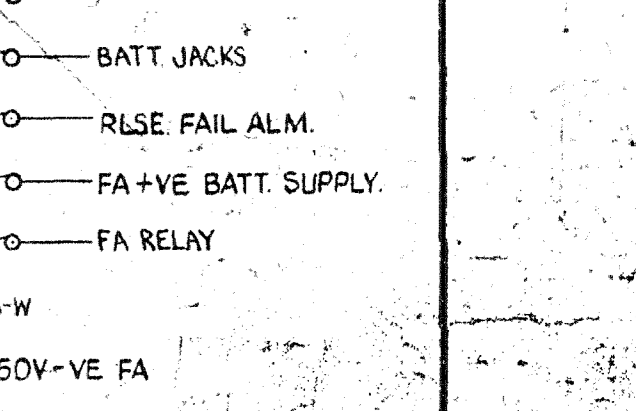
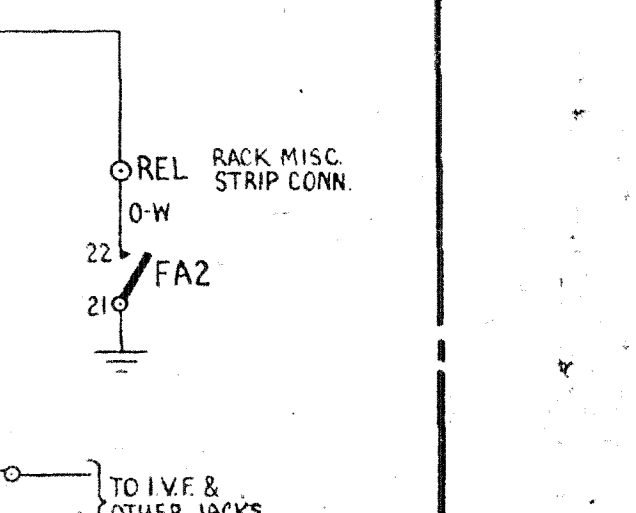
**FIG.35A** (A.C.3 OR A.C.3T)  
1 PER 2ND, 3RD, 5TH, 6TH ETC UNITS ('S')

**FIG.36** 2280~ DISTRIBUTION (A.C. 3)  
(2 OSCILLATORS PER 15 B/W CCTS.)  
1 PER 1ST 4TH ETC. UNITS ('S')



**FIG.36B** 2280~ DISTRIBUTION (A.C. 3T)  
(2 OSCILLATORS PER 15 B/W CCTS.)  
1 PER 1ST 4TH ETC. UNITS ('S')

**FIG.37** 50V -VE BATT FUSE ALARM  
& OSCILLATOR FAIL ALARM.  
1 PER UNIT ('S')

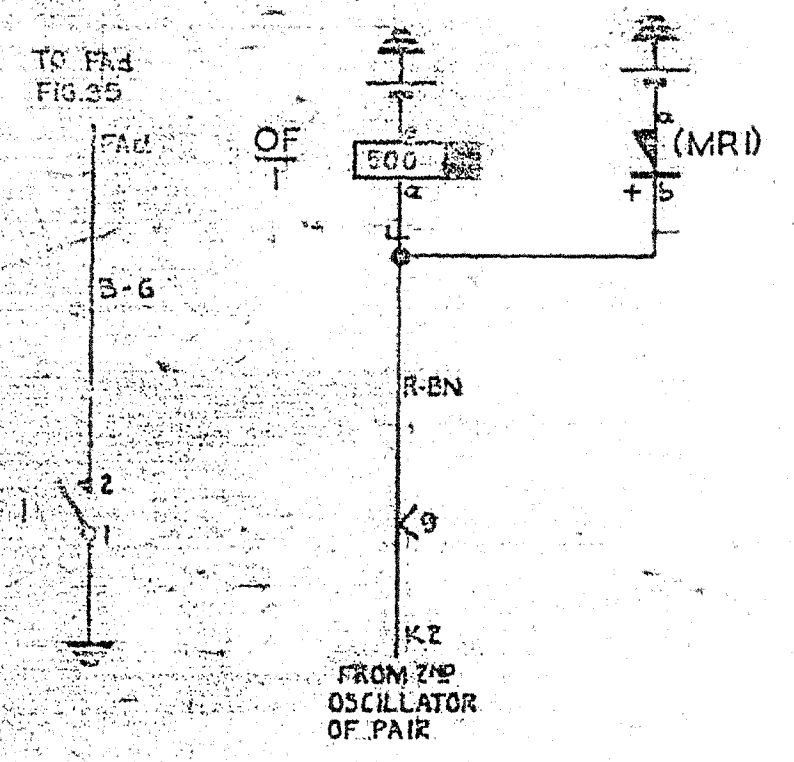


**FIG.37A** (A.C.3 OR A.C.3T)  
1 PER 2ND, 3RD, 5TH, 6TH ETC UNITS ('S')

RACK COMMON SERVICES N.Z. J.A.X. No 13 UNITS			
AUTO EXCHANGE & I.V.F. SYSTEM FOR USE WITH LR & O/GS SYSTEM.			
NO CHANGE	SHT 5 AMD	(133303)	C 2-9-77 RED
NO CHANGE	9HT 5 AMD	(43121)	B 31-1-77 RED
PREPARED FROM	GBW 13730	ISS 20A (85950)	A 14-5-76 C/W
AMENDMENT PARTICULARS		ISSUE DATE	APPR
NZPO	2.5	PH	PA
GBW 13730			MOD. A
SHEET 4/G			



Fig 36  
 OSCILLATOR FAIL ALARM (AC ST)  
 1 PER 18, 24 ETC UNITS ('S')



FOR BATT. & ETH. ROUTING SEE FIG. 35.

TABLE SHOWING DIAGRAMS TO WHICH COMMON SERVICES ARE FED.

GBW 13730 MOD. A FIG.	A UNITS																B UNITS				C UNITS		M UNITS		E UNITS		S UNITS										WEC EQUIPMENT																																																																																																																																																																																																																																																																																																																																																																																																																																																																																																																																																																																																																																																																																																																																																																																																																																																																																																																																																																																																																																																																																																																																																																																																
	13890	13900	13910	13920	13930	13940	13950	13960	13970	13980	13990	14000	14010	14020	14030	14040	14050	14060	14070	14080	14090	14100	14110	14120	14130	14140	14150	14160	14170	14180	14190	14200	14210	14220	14230	14240	14250	14260	14270	14280	14290	14300	14310	14320	14330	14340	14350	14360	14370	14380	14390	14400	14410	14420	14430	14440	14450	14460	14470	14480	14490	14500	14510	14520	14530	14540	14550	14560	14570	14580	14590	14600	14610	14620	14630	14640	14650	14660	14670	14680	14690	14700	14710	14720	14730	14740	14750	14760	14770	14780	14790	14800	14810	14820	14830	14840	14850	14860	14870	14880	14890	14900	14910	14920	14930	14940	14950	14960	14970	14980	14990	15000	15010	15020	15030	15040	15050	15060	15070	15080	15090	15100	15110	15120	15130	15140	15150	15160	15170	15180	15190	15200	15210	15220	15230	15240	15250	15260	15270	15280	15290	15300	15310	15320	15330	15340	15350	15360	15370	15380	15390	15400	15410	15420	15430	15440	15450	15460	15470	15480	15490	15500	15510	15520	15530	15540	15550	15560	15570	15580	15590	15600	15610	15620	15630	15640	15650	15660	15670	15680	15690	15700	15710	15720	15730	15740	15750	15760	15770	15780	15790	15800	15810	15820	15830	15840	15850	15860	15870	15880	15890	15900	15910	15920	15930	15940	15950	15960	15970	15980	15990	16000	16010	16020	16030	16040	16050	16060	16070	16080	16090	16100	16110	16120	16130	16140	16150	16160	16170	16180	16190	16200	16210	16220	16230	16240	16250	16260	16270	16280	16290	16300	16310	16320	16330	16340	16350	16360	16370	16380	16390	16400	16410	16420	16430	16440	16450	16460	16470	16480	16490	16500	16510	16520	16530	16540	16550	16560	16570	16580	16590	16600	16610	16620	16630	16640	16650	16660	16670	16680	16690	16700	16710	16720	16730	16740	16750	16760	16770	16780	16790	16800	16810	16820	16830	16840	16850	16860	16870	16880	16890	16900	16910	16920	16930	16940	16950	16960	16970	16980	16990	17000	17010	17020	17030	17040	17050	17060	17070	17080	17090	17100	17110	17120	17130	17140	17150	17160	17170	17180	17190	17200	17210	17220	17230	17240	17250	17260	17270	17280	17290	17300	17310	17320	17330	17340	17350	17360	17370	17380	17390	17400	17410	17420	17430	17440	17450	17460	17470	17480	17490	17500	17510	17520	17530	17540	17550	17560	17570	17580	17590	17600	17610	17620	17630	17640	17650	17660	17670	17680	17690	17700	17710	17720	17730	17740	17750	17760	17770	17780	17790	17800	17810	17820	17830	17840	17850	17860	17870	17880	17890	17900	17910	17920	17930	17940	17950	17960	17970	17980	17990	18000	18010	18020	18030	18040	18050	18060	18070	18080	18090	18100	18110	18120	18130	18140	18150	18160	18170	18180	18190	18200	18210	18220	18230	18240	18250	18260	18270	18280	18290	18300	18310	18320	18330	18340	18350	18360	18370	18380	18390	18400	18410	18420	18430	18440	18450	18460	18470	18480	18490	18500	18510	18520	18530	18540	18550	18560	18570	18580	18590	18600	18610	18620	18630	18640	18650	18660	18670	18680	18690	18700	18710	18720	18730	18740	18750	18760	18770	18780	18790	18800	18810	18820	18830	18840	18850	18860	18870	18880	18890	18900	18910	18920	18930	18940	18950	18960	18970	18980	18990	19000	19010	19020	19030	19040	19050	19060	19070	19080	19090	19100	19110	19120	19130	19140	19150	19160	19170	19180	19190	19200	19210	19220	19230	19240	19250	19260	19270	19280	19290	19300	19310	19320	19330	19340	19350	19360	19370	19380	19390	19400	19410	19420	19430	19440	19450	19460	19470	19480	19490	19500	19510	19520	19530	19540	19550	19560	19570	19580	19590	19600	19610	19620	19630	19640	19650	19660	19670	19680	19690	19700	19710	19720	19730	19740	19750	19760	19770	19780	19790	19800	19810	19820	19830	19840	19850	19860	19870	19880	19890	19900	19910	19920	19930	19940	19950	19960	19970	19980	19990	20000	20010	20020	20030	20040	20050	20060	20070	20080	20090	20100	20110	20120	20130	20140	20150	20160	20170	20180	20190	20200	20210	20220	20230	20240	20250	20260	20270	20280	20290	20300	20310	20320	20330	20340	20350	20360	20370	20380	20390	20400	20410	20420	20430	20440	20450	20460	20470	20480	20490	20500	20510	20520	20530	20540	20550	20560	20570	20580	20590	20600	20610	20620	20630	20640	20650	20660	20670	20680	20690	20700	20710	20720	20730	20740	20750	20760	20770	20780	20790	20800	20810	20820	20830	20840	20850	20860	20870	20880	20890	20900	20910	20920	20930	20940	20950	20960	20970	20980	20990	21000	21010	21020	21030	21040	21050	21060	21070	21080	21090	21100	21110	21120	21130	21140	21150	21160	21170	21180	21190	21200	21210	21220	21230	21240	21250	21260	21270	21280	21290	21300	21310	21320	21330	21340	21350	21360	21370	21380	21390	21400	21410	21420	21430	21440	21450	21460	21470	21480	21490	21500	21510	21520	21530	21540	21550	21560	21570	21580	21590	21600	21610	21620	21630	21640	21650	21660	21670	21680	21690	21700	21710	21720	21730	21740	21750	21760	21770	21780	21790	21800	21810	21820	21830	21840	21850	21860	21870	21880	21890	21900	21910	21920	21930	21940	21950	21960	21970	21980	21990	22000	22010	22020	22030	22040	22050	22060	22070	22080	22090	22100	22110	22120	22130	22140	22150	22160	22170	22180	22190	22200	22210	22220	22230	22240	22250	22260	22270	22280	22290	22300	22310	22320	22330	22340	22350	22360	22370	22380	22390	22400	22410	22420	22430	22440	22450	22460	22470	22480	22490	22500	22510	22520	22530	22540	22550	22560	22570	22580	22590	22600	22610	22620	22630	22640	22650	22660	22670	22680	22690	22700	22710	22720	22730	22740	22750	22760	22770	22780	22790	22800	22810	22820	22830	22840	22850	22860	22870	22880	22890	22900	22910	22920	22930	22940	22950	22960	22970	22980	22990	23000	23010	23020	23030	23040	23050	23060	23070	23080	23090	23100	23110	23120	23130	23140	23150	23160	23170	23180	23190	23200	23210	23220	23230	23240	23250	23260	23270	23280	23290	23300	23310	23320	23330	23340	23350	23360	23370	23380	23390	23400	23410	23420	23430	23440	23450	23460	23470	23480	23490	23500	23510	23520	23530	23540	23550	23560	23570	23580	23590	23600	23610	23620	23630	23640	23650	23660	23670	23680	23690	23700	23710	23720	23730	23740	23750	23760	23770	23780	23790	23800	23810	23820	23830	23840	23850	23860	23870	23880	23890	23900	23910	23920	23930	23940	23950	23960	23970	23980	23990	24000	24010	24020	24030	24040	24050	24060	24070	24080	24090	24100	24110	24120	24130	24140	24150	24160	24170	24180	24190	24200	24210	24220	24230	24240	24250	24260	24270	24280	24290	24300	24310	24320	24330	24340	24350	24360	24370	24380	24390	24400	24410	24420	24430	24440	24450	24460	24470	24480	24490	24500	24510	24520	24530	24540	24550	24560	24570	24580	24590	24600	24610	24620	24630	24640	24650	24660	24670	24680	24690	24700	24710	24720	24730	24740	24750	24760	24770	24780	24790	24800	24810	24820	24830	24840	24850	24860	24870	24880	24890	24900	24910	24920	24930	24940	24950	24960	24970	24980	24990	25000	25010	25020	25030	25040	25050	25060	25070	25080	25090	25100	25110	25120	25130	25140	25150	25160	25170	25180	25190	25200	25210	25220	25230	25240	25250	25260	25270	25280	25290	25300	25310	25320	25330	25340	25350	25360	25370	25380	25390	25400	25410	25420	25430	25440	25450	25460	25470	25480	25490	25500	25510	25520	25530	25540	25550	25560	25570	25580	25590	25600	25610	25620	25630	25640	25650	25660	25670	25680	25690	25700	25710	25720	25730	25740	25750	25760	25770