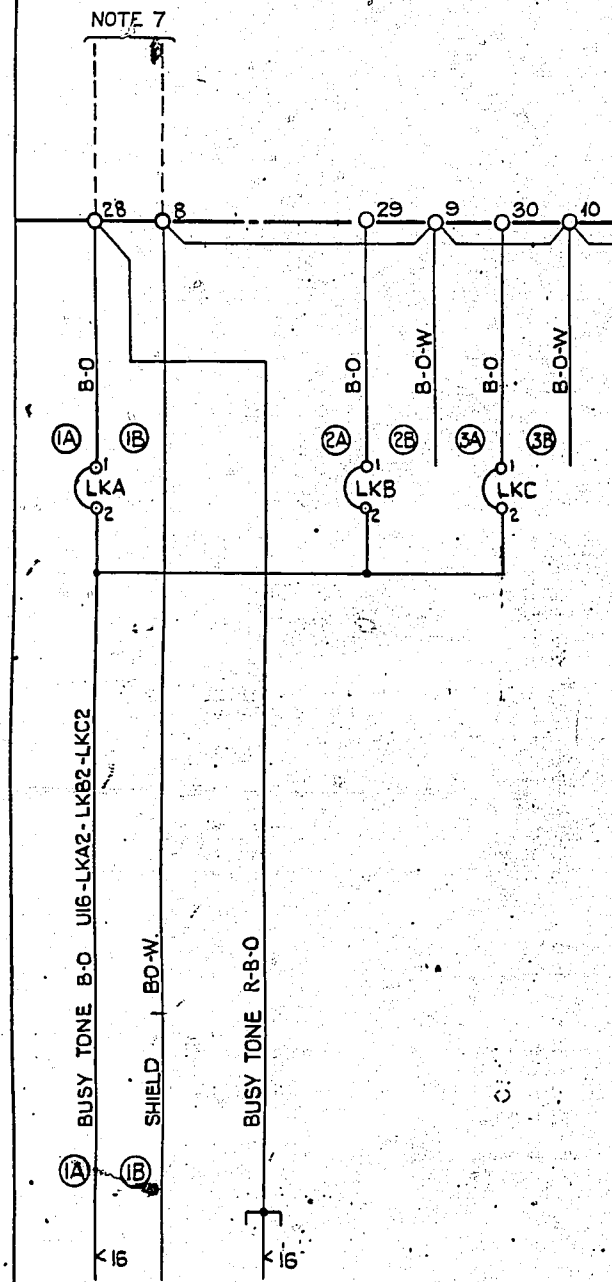


FIG. 5A. BUSY TONE EARTH.

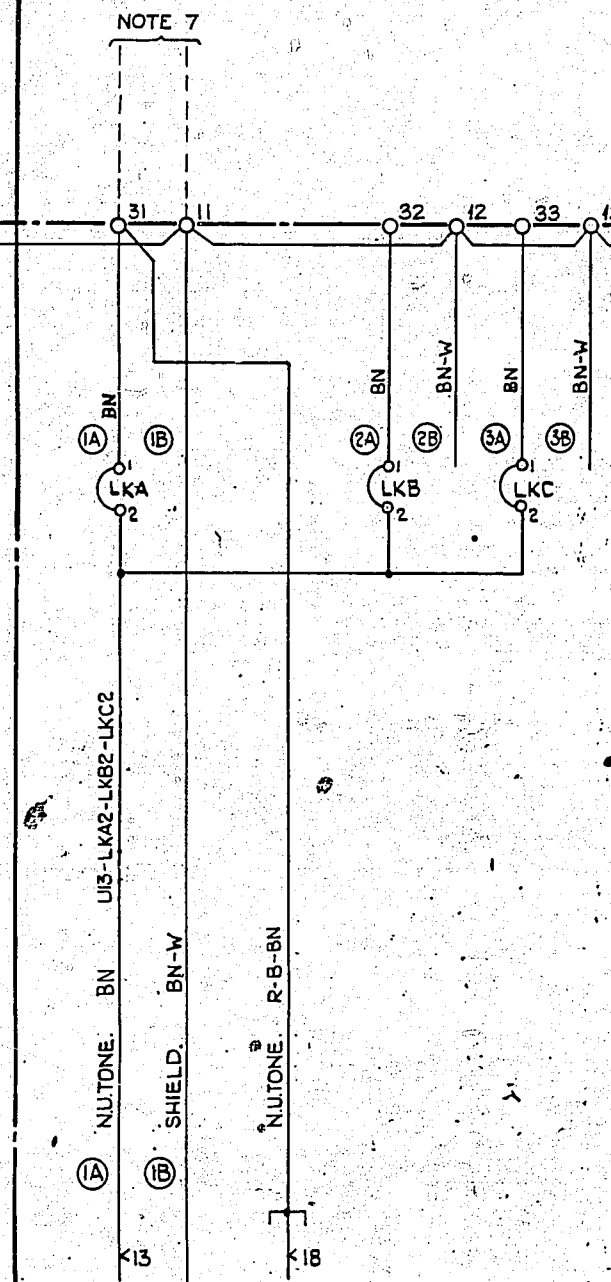


TO RINGING & PD. CCT. DRG. GBW.13690 FIG. 1.

TO FINAL SELR. CCT. DRG. GBW.13660

FIG. 5B. UNIT R

FIG. 6A. NU. TONE EARTH

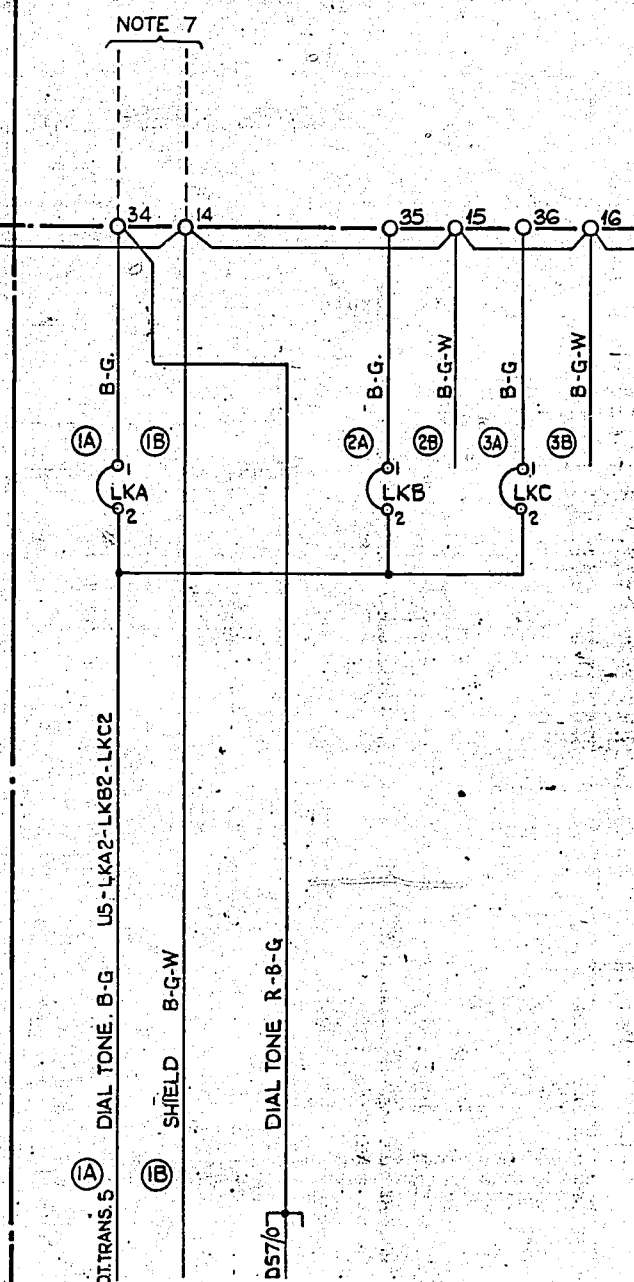


TO ALARMS & TP. CCT. DRG. GBW.13690 FIG. 2.

TO DISC. SELR. CCT. DRG. GBW.13650

FIG. 6B. UNIT R

FIG. 7A. DIAL TONE EARTH

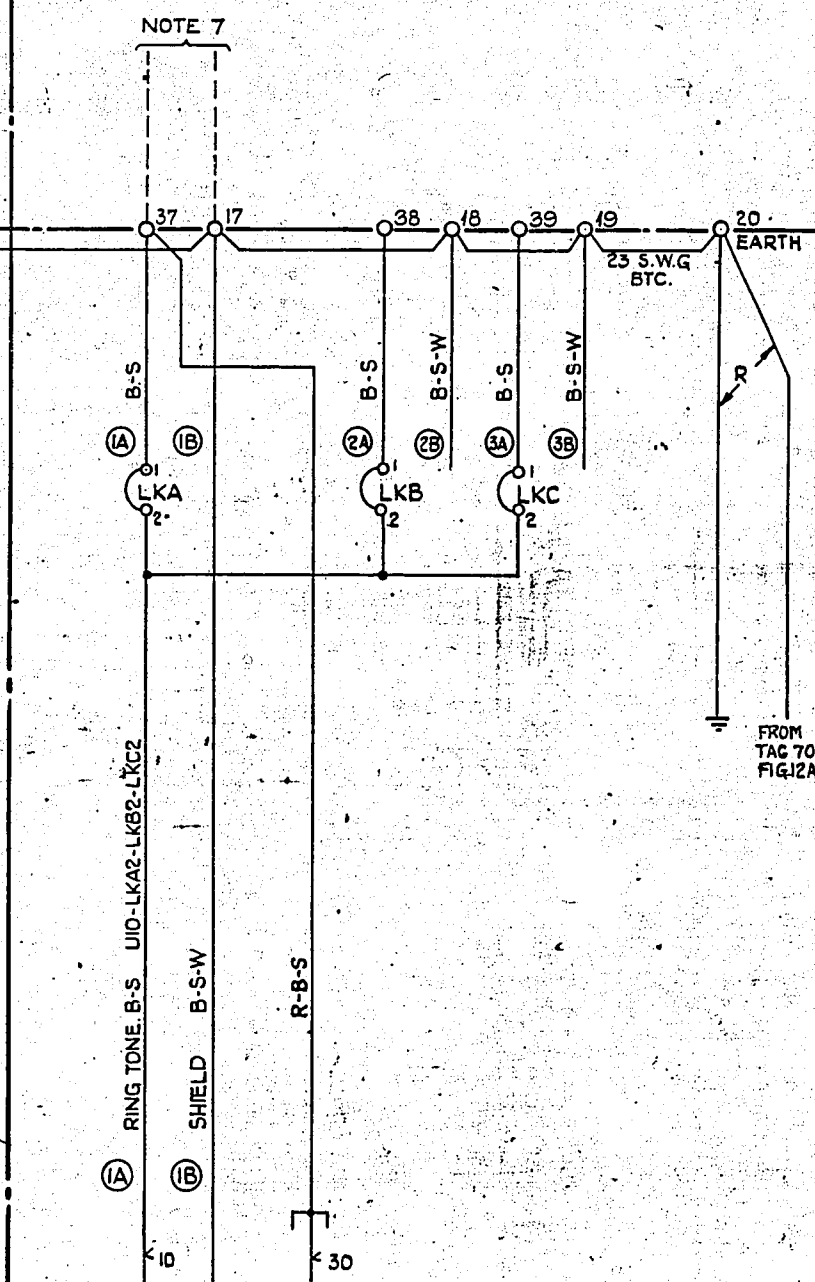


TO WIRING OF ELECTRONIC TONE GEN. RS. & TRANSFORMERS DRG. GBW.13690 FIG. 4.

TO DISC. SELR. CCT. DRG. GBW.13650

FIG. 7B. UNIT R

FIG. 8A. RING TONE EARTH



TO RINGING & PD. CCT. DRG. GBW.13690 FIG. 1.

TO FINAL SELR. CCT. DRG. GBW.13660.

FIG. 8B. UNIT R

AMENDMENT PARTICULARS		(42782)	A	1-8-61	K.G.H.
ISSUE	DATE	APPR			
RACK COMMON SERVICES N.Z. U.A.X. No 13 UNITS. REMOTE R UNIT W/- I.V.F. JUNCS.					SIZE: L 50V/C
GBW. 13700MOD.A					SHEET 2-6

FIG. 9A. CONTINUOUS RINGING & LINE TESTER JACK.

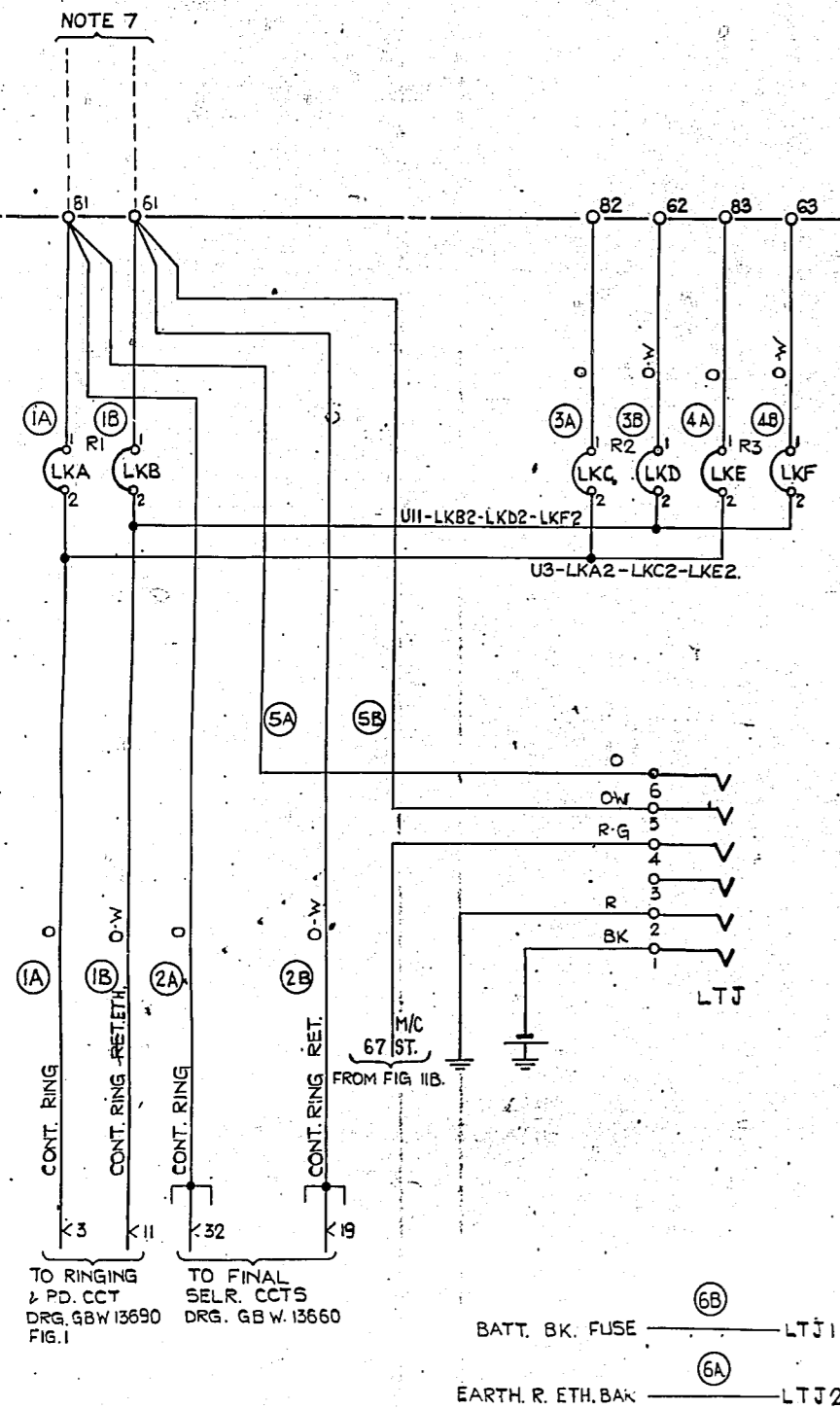


FIG. 9B. UNIT R

FIG. 10A. TIME PULSE RELEASE

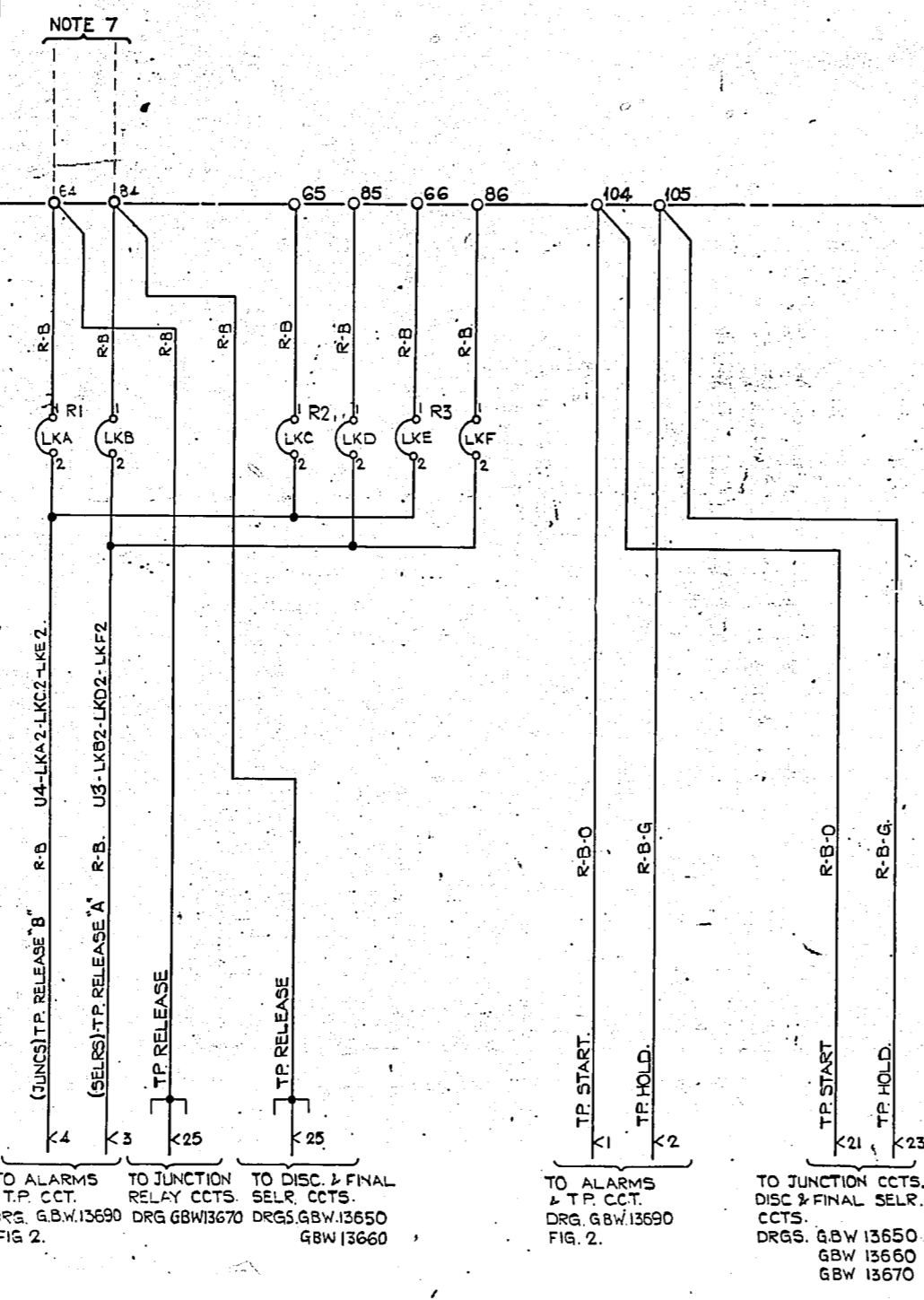


FIG. 10B. UNIT R

FIG. 11A. MACHINE START.

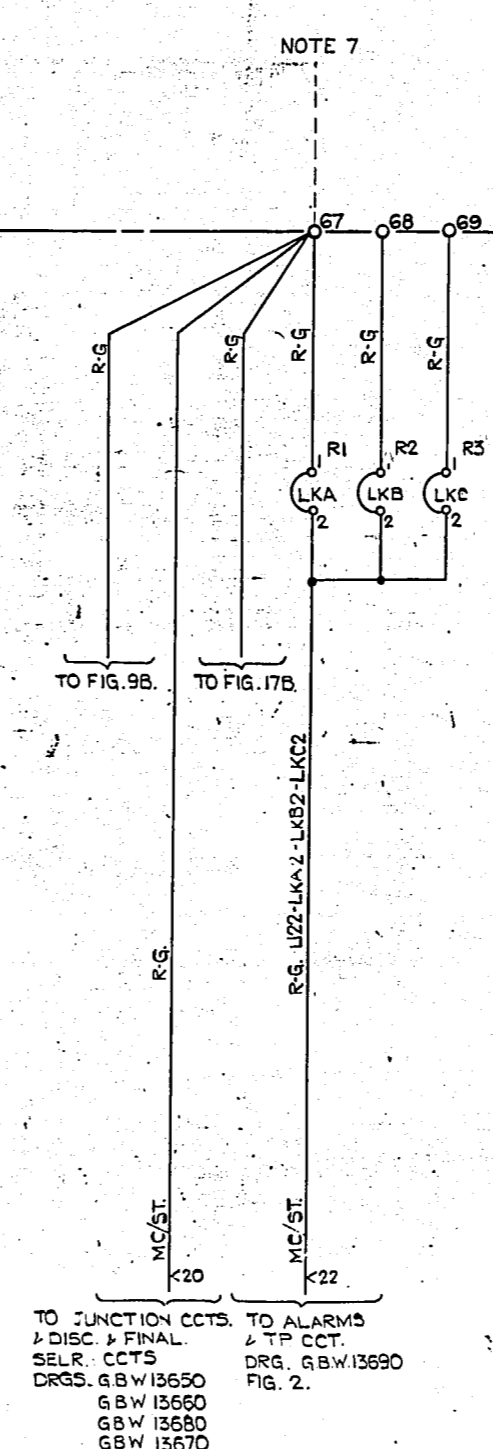


FIG. 11B. UNIT R

FIG. 12A. OVERFLOW BUSY TONE - 900 ~

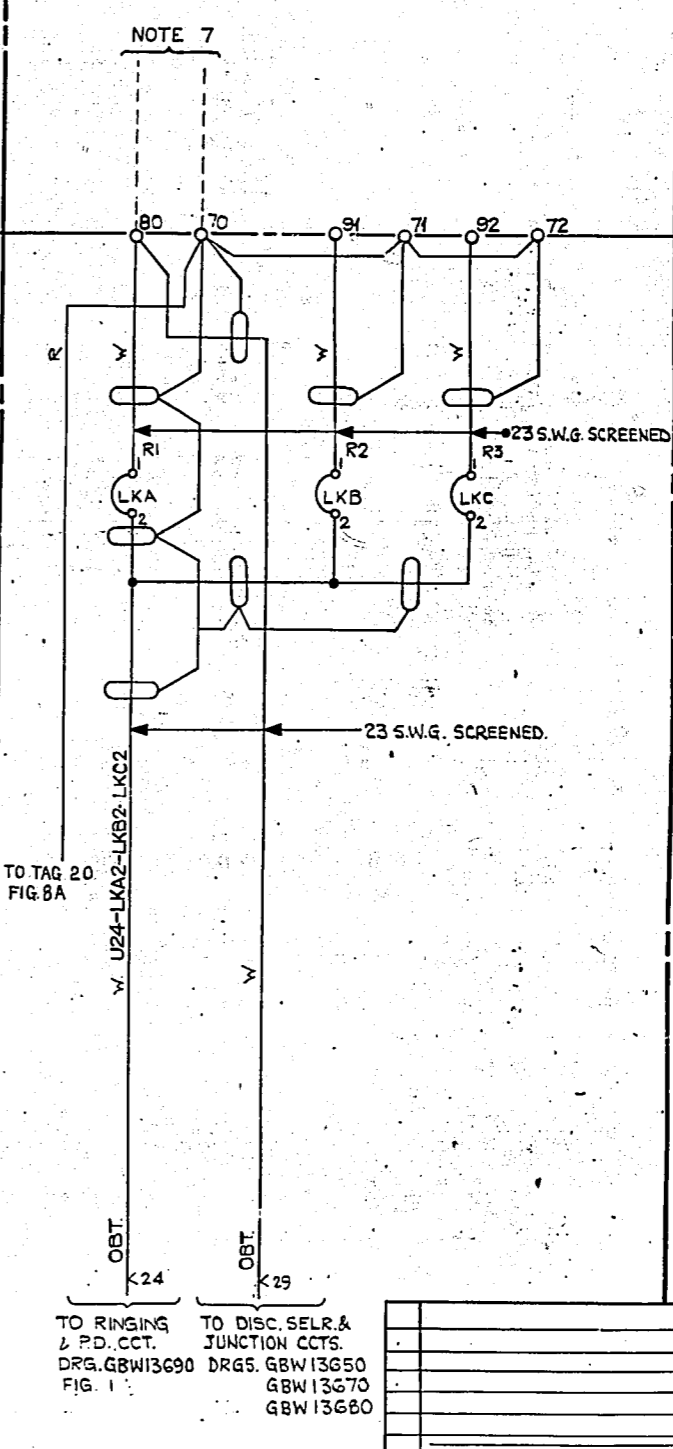
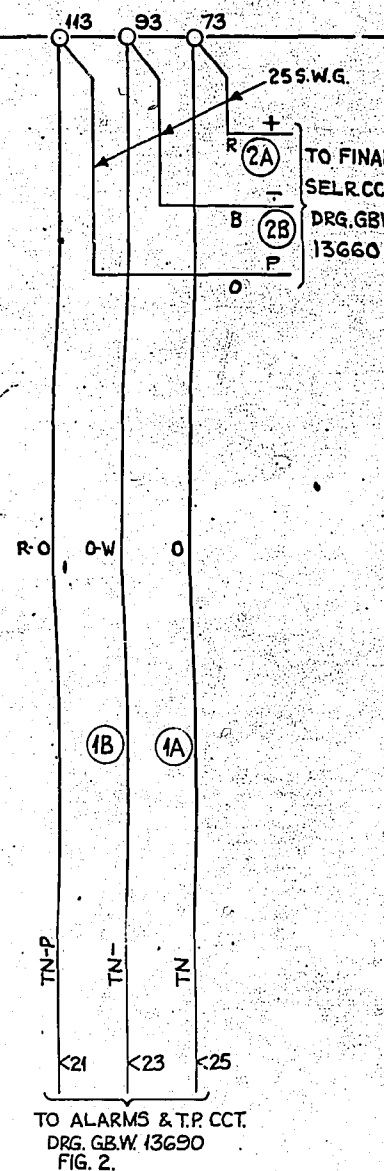


FIG. 12B. UNIT R

RACK COMMON SERVICES			
N.Z. U.A.X. No 43 UNITS.			
REMOTE R UNIT			
W/- I.V.F JUNC.			
(42782)	A	1-8-G/K.G.H.	
AMENDMENT PARTICULARS.	ISSUE DATE	APPD	SIZE: L 50V C
N.Z.P.O.	1372	AM WS	1372
GBW. 1370 MOD.A.			SHEET 3-6

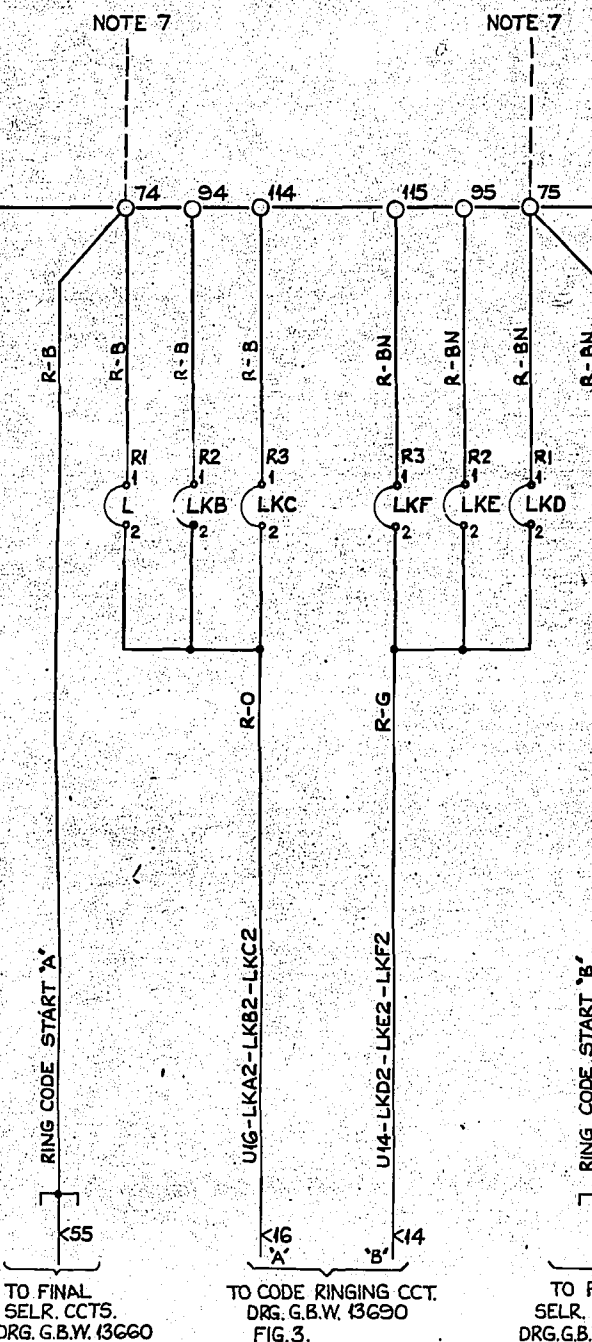
FIG. 13A. TEST NUMBER.



TO ALARMS & T.P. CCT.
DRG. GBW 13690
FIG. 2.

FIG. 13B. UNIT R

FIG. 14A. RING CODE START 'A' & 'B'

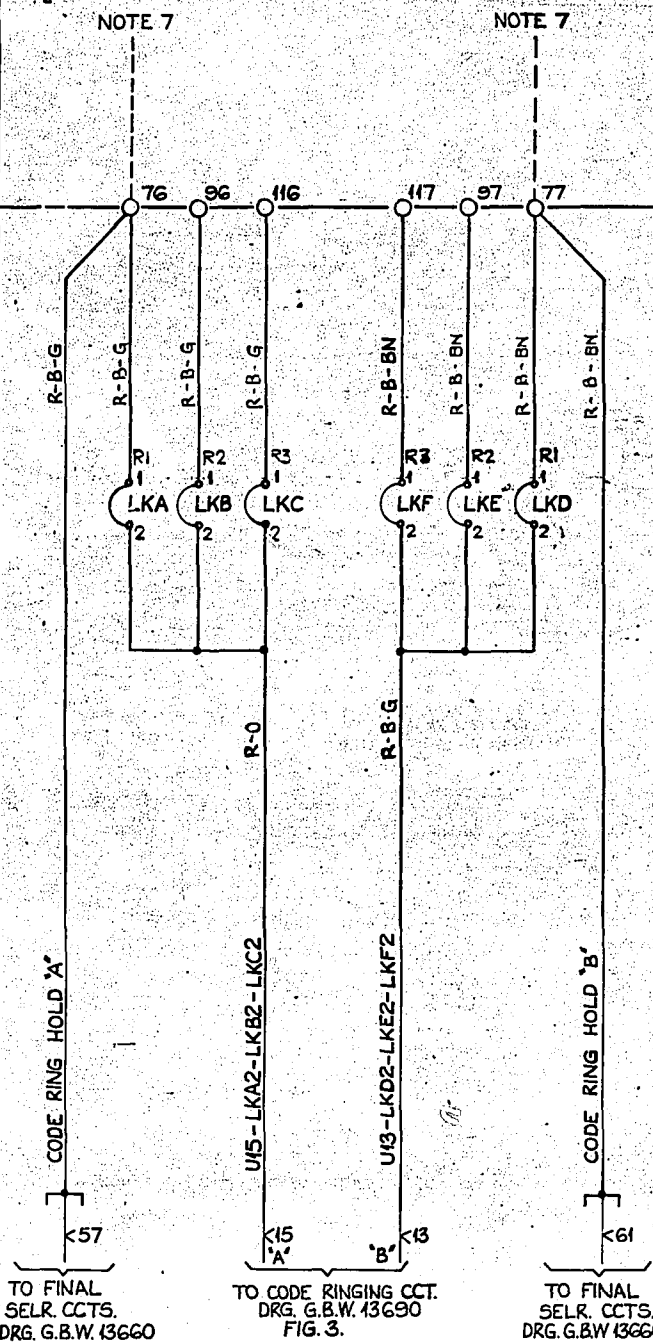


TO FINAL SELR. CCTS.
DRG. G.B.W. 13660

TO CODE RINGING CCT.
DRG. G.B.W. 13690
FIG. 3.

FIG. 14B. UNIT R

FIG. 15A. RING CODE HOLD 'A' & 'B'

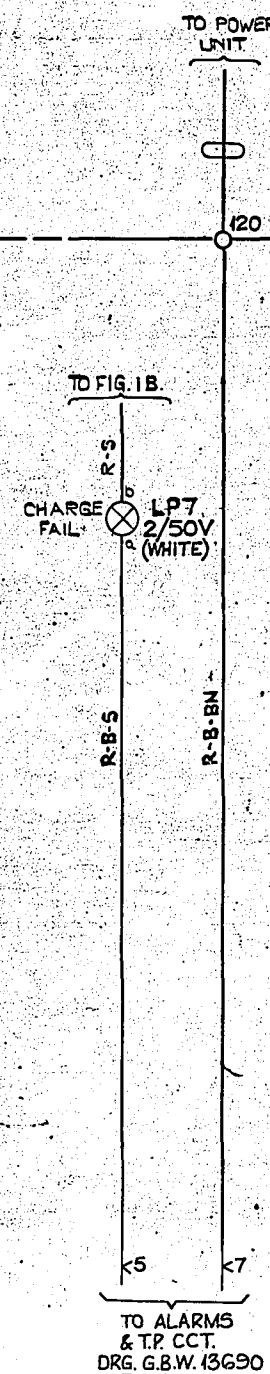


TO FINAL SELR. CCTS.
DRG. G.B.W. 13660

TO CODE RINGING CCT.
DRG. G.B.W. 13690
FIG. 3.

FIG. 15B. UNIT R

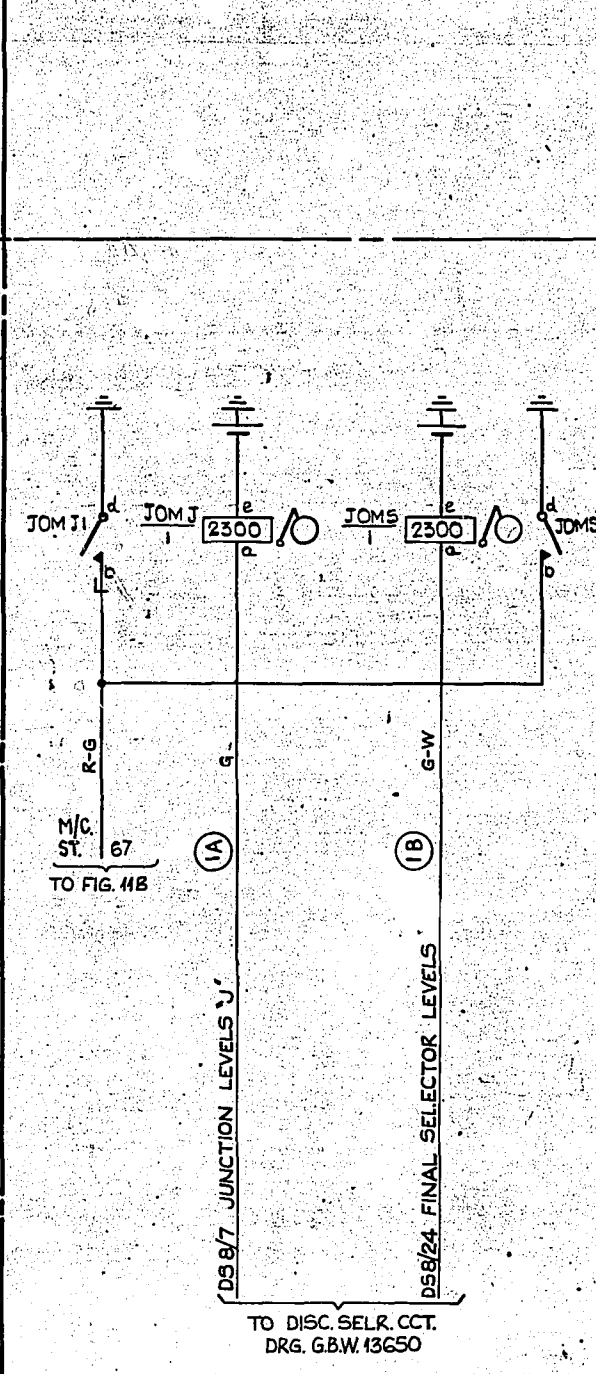
FIG. 16A. CHARGE FAIL



TO ALARMS & T.P. CCT.
DRG. G.B.W. 13690
FIG. 2.

FIG. 16B. UNIT R

FIG. 17A. SELECTOR OUTLET OVERFLOW METERS

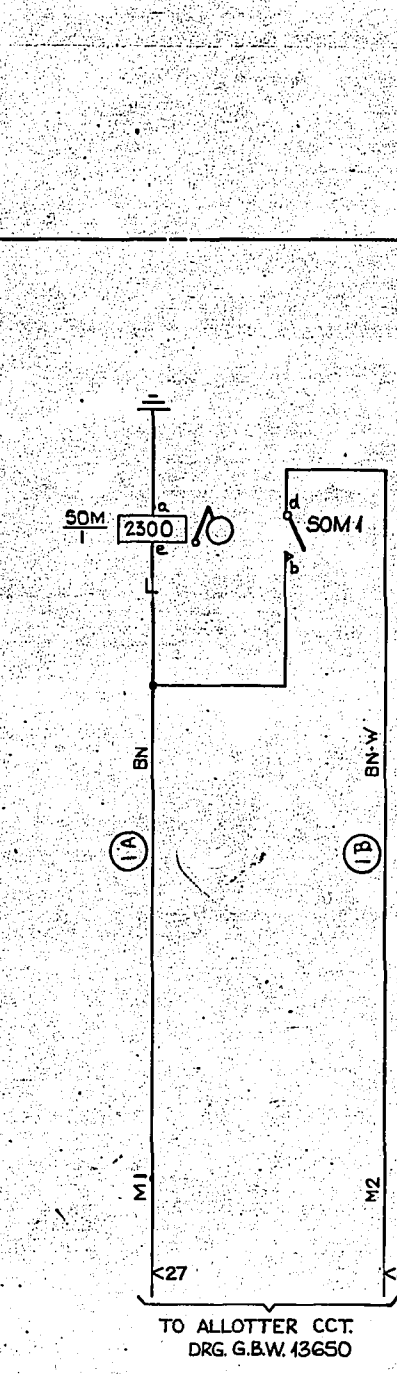


TO DISC. SELR. CCT.
DRG. G.B.W. 13650

BATT. BK. FUSE ——— JOM JE-JOM Se
EARTH ETH. BAR ——— JOM Jd-JOM Sd-SOM a
(FIG. 18B)

FIG. 17B. UNIT R

FIG. 18A. SELECTOR CONGESTION METER



TO ALLOTTER CCT.
DRG. G.B.W. 13650

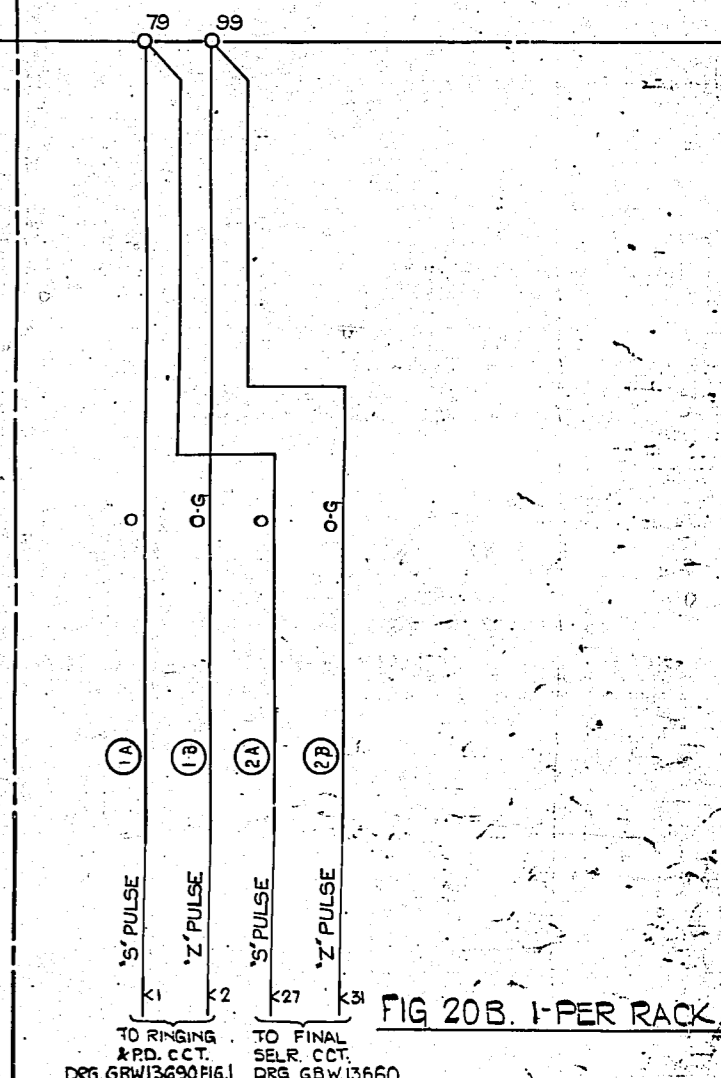
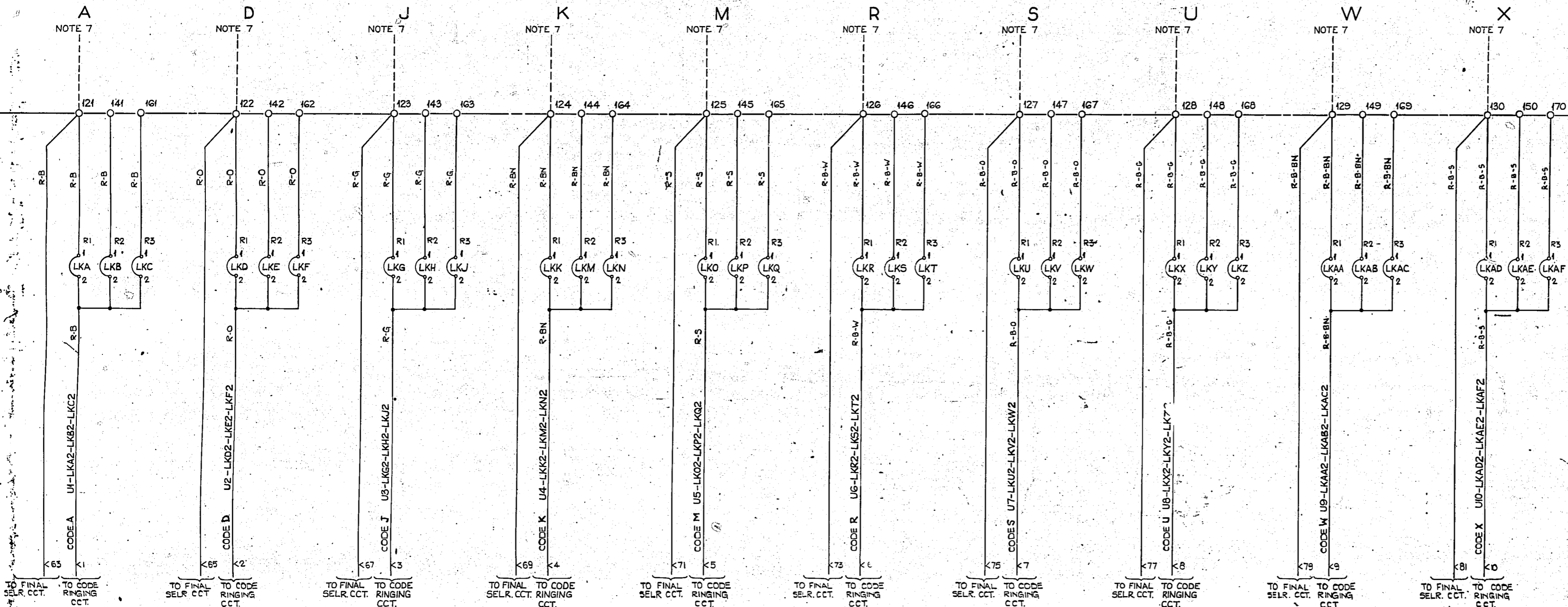
FOR EARTH ROUTING SEE FIG. 17B.

FIG. 18B. UNIT R

RACK COMMON SERVICES			
N.Z. U.A.X. No 13 UNITS.			
REMOTE 'R' UNIT			
W/- I.V.F. JUNC.			
		(42782)	A 1-B-G/KGH
AMENDMENT PARTICULARS		ISSUE DATE	APP
NZ.P.O.		WS	AM
13-7-54		GBW-13700 MOD.A.	
		SHEET 4-G	

FIG. 19A. CODE RINGING CONDUCTORS.

FIG. 20A 'S' & 'Z' PULSES.

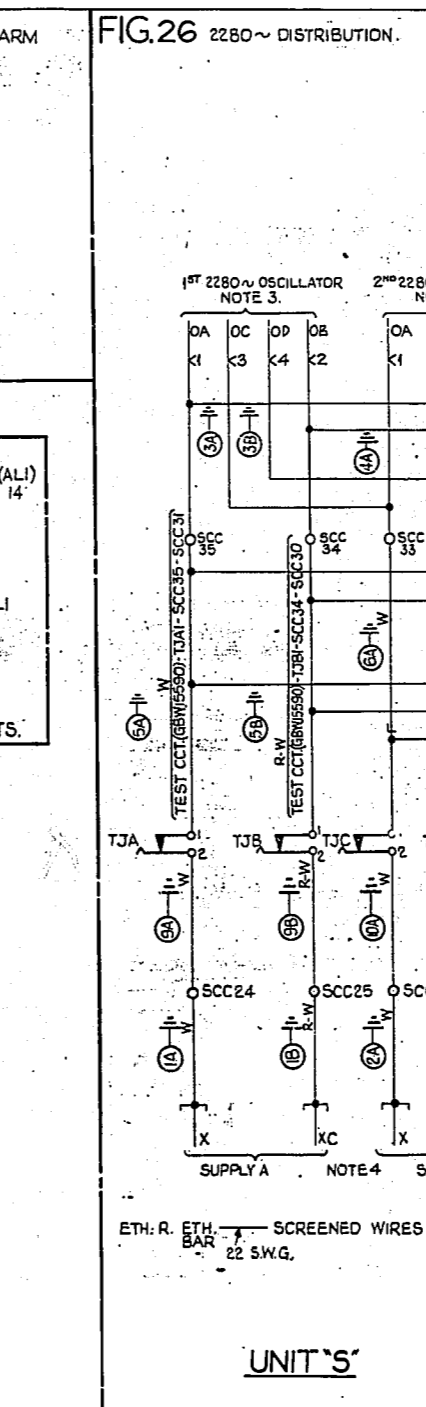
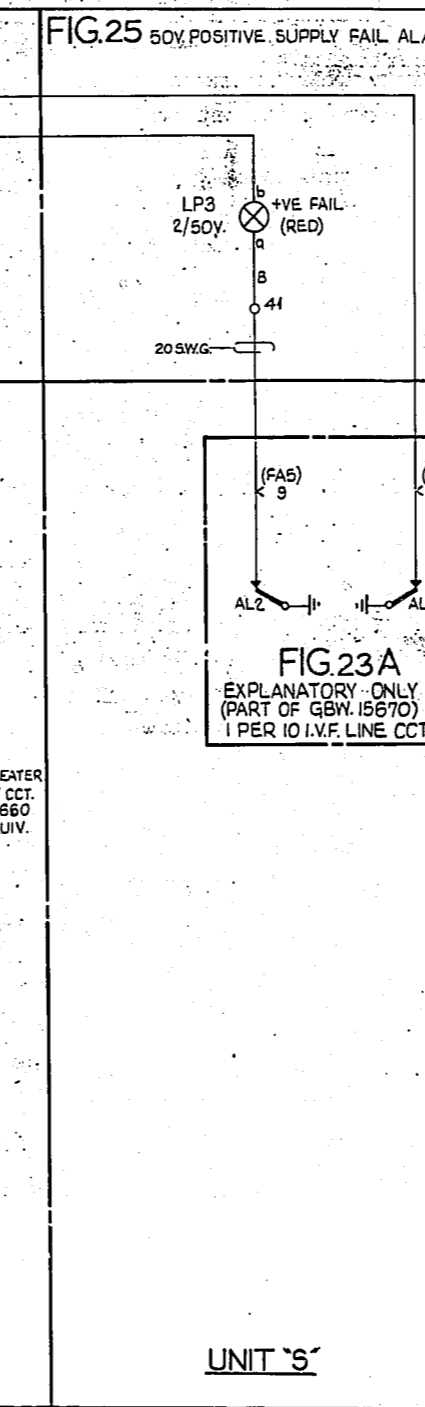
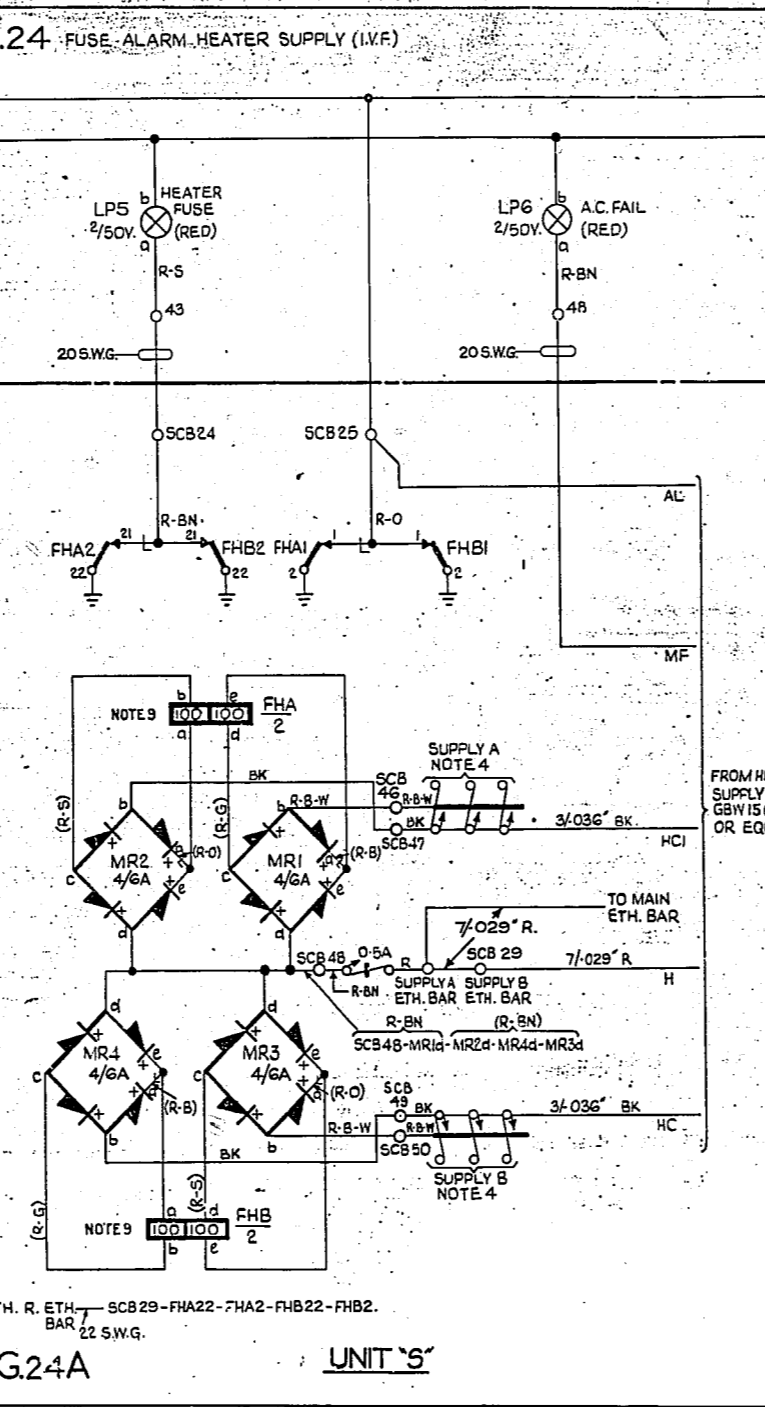
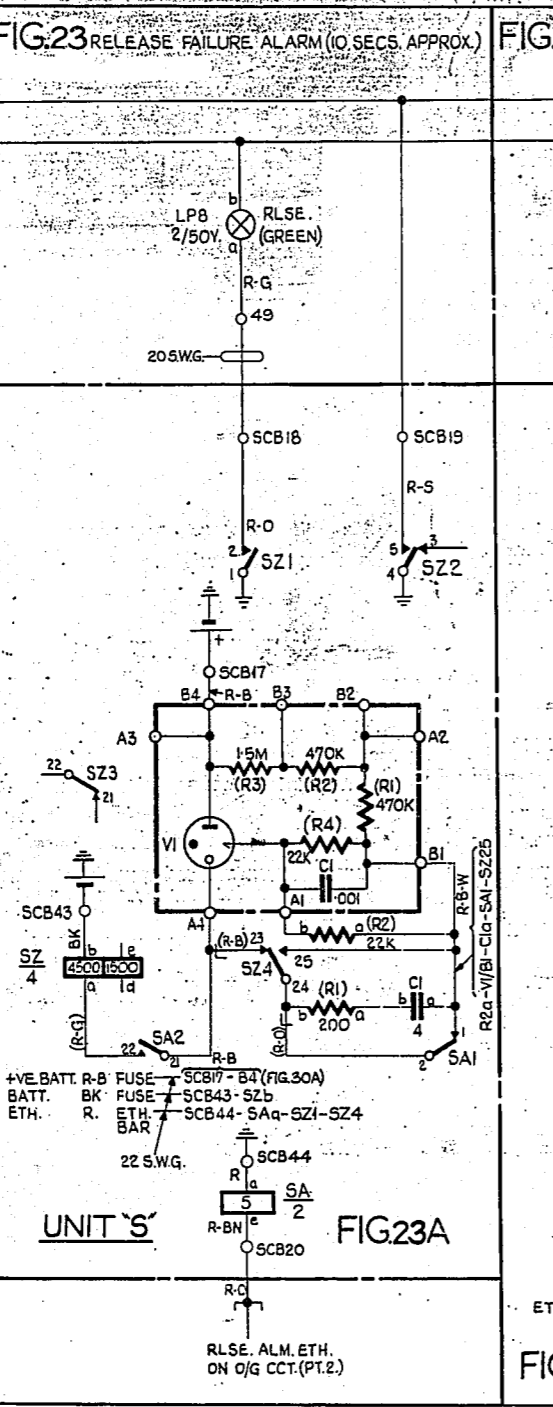
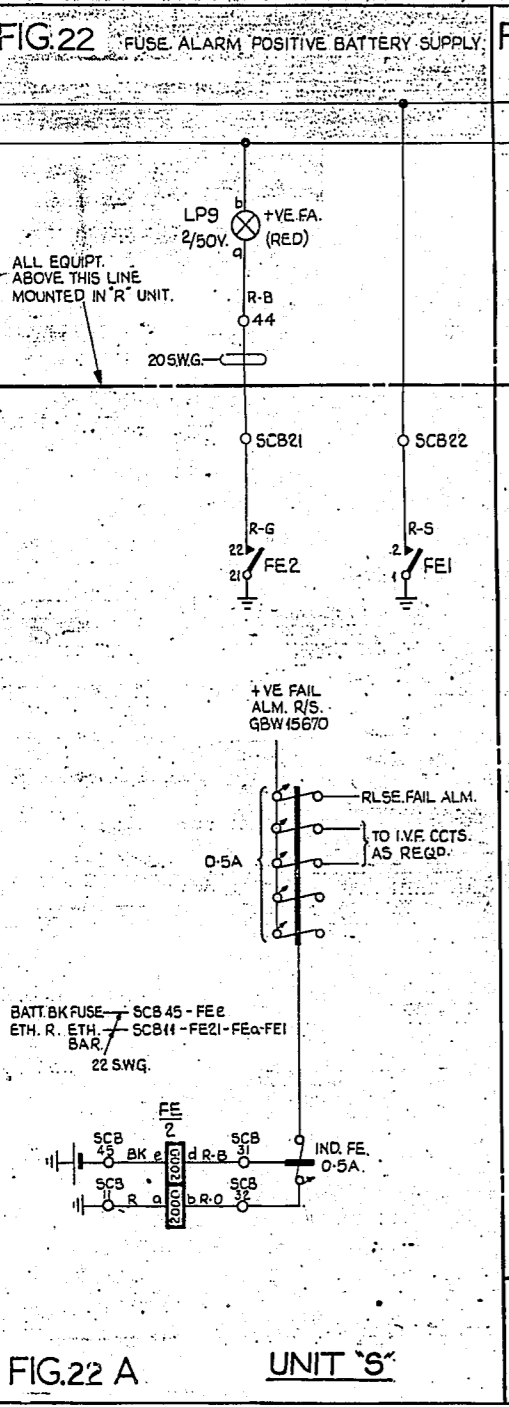
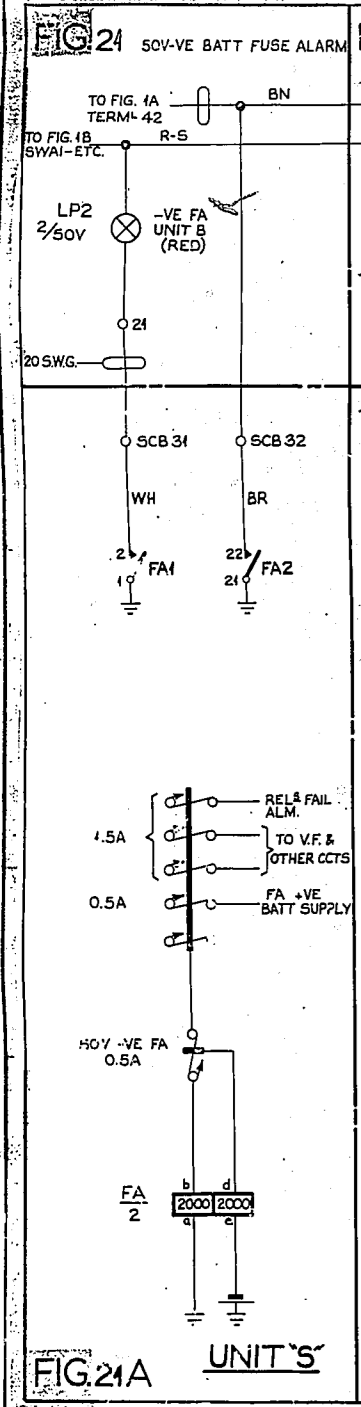


REF. FINAL SELECTOR CCT. - DRG. GBW.13660
 CODE RINGING CCT. - DRG. GBW.13690 FIG. 3.

FIG. 19B. UNIT R

FIG 20B. 1-PER RACK

RACK COMMON SERVICES			
N.Z. U.A.X. No 13 UNITS.			
REMOTE 'R' UNIT			
W/- I.V.F. JUNCs.			
AMENDMENT PARTICULARS.		ISSUE DATE	APP'D
(42782)		A	1-8-61 KGH
NZPO		13-7-61	
G.E. TEL. WORKS COVENTRY.		AM.	
GBW. 13700. MOD. A		SHEET 5-6	



				RACK COMMON SERVICES			
				N.Z. U.A.X. No. 43 UNITS			
				REMOTE UNIT			
				W/ V.V. UNITS			
				(42782) A 9-52 KGH			
AMENDMENT		PARTICULARS		ISSUE DATE		APPLY	
				SIZE: X 5			
				GBW 13700 MOD. A			
				SHEET 6-6			
VZPO		PN					