

FROM DISCRIMINATING SELECTOR CCT. GBW 13650 FIG. 2

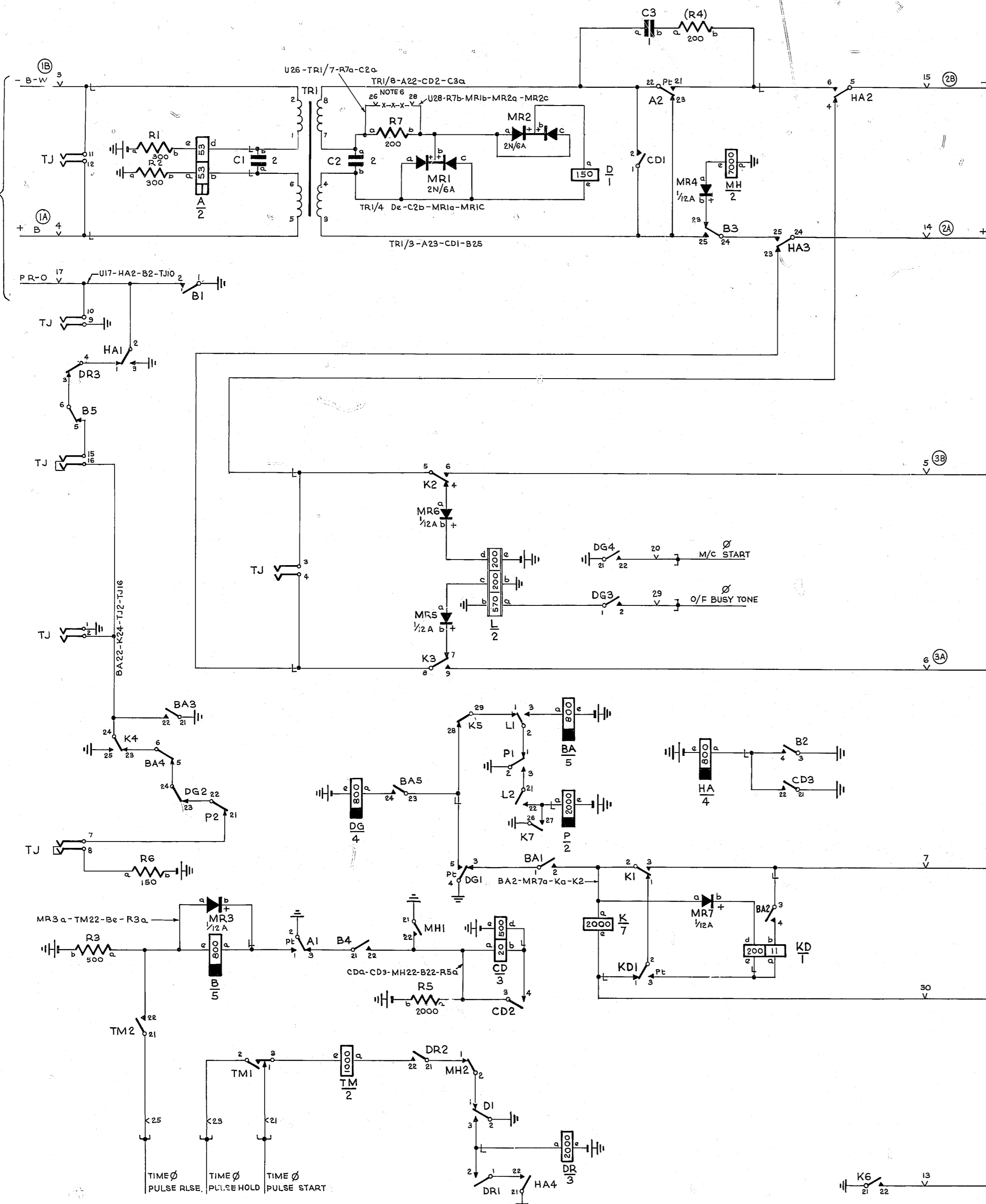


FIG. 1

BATT. W. U12-CD2-B2e-BAe-DGe-Pe-Le-HAe-DRe-R5b-R6b-R1b-R3b  
 EARTH. R. U11-A2-CD21-D2-MH21-MHa-BA21-DG21-DG4-K21-K25-K26-P2-Lb-HA21-HA3-B1-B3-R2a-TJ1-TJ9

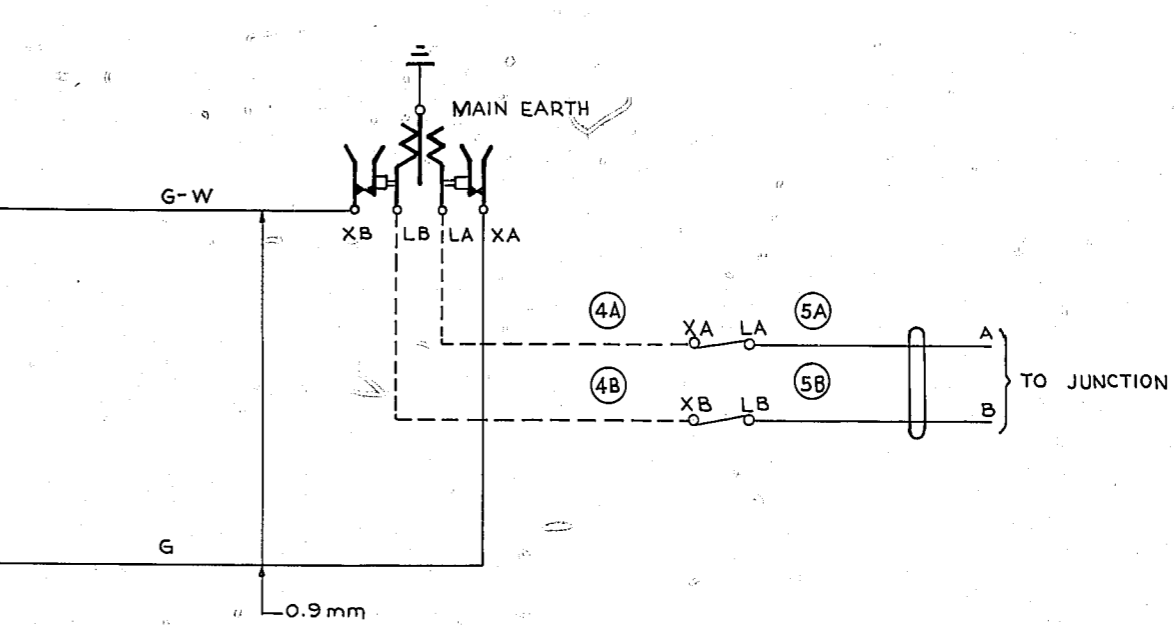


FIG. 3. M.D.F.

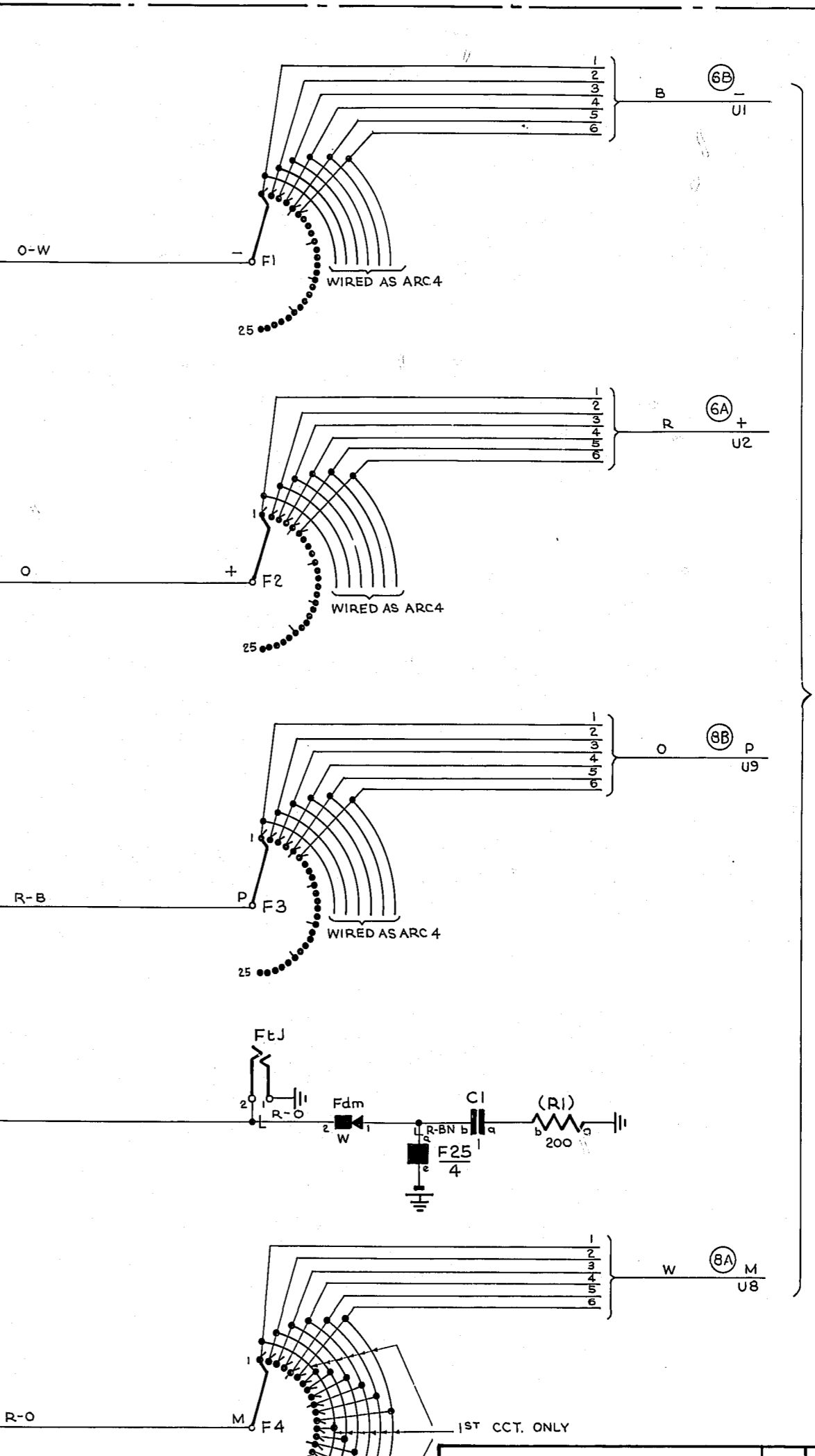


FIG. 2

TO PARTY LINE FINAL SELR. CCT. (NOTE 2) DWG. GBW 13660 FIG. 1.

- NOTES:-
1. FUSING 1.5 AMP PER CCT. FIGS. 1 & 2
  2. FINDER BANK OUTLETS 1-6 ARE CONNECTED TO FINAL SELR CCTS 1-6 RESPECTIVELY.
  3. ALL WIRE UNLESS OTHERWISE SPECIFIED, TO BE 0.6mm. BANK & PLATE WIRING TO BE 0.5mm.
  4. SHELF JACK U POINTS 9&11 TO MAKE CONTACT WHEN RELAY SET IS REMOVED.
  5. Ø FOR WIRING SEE DWG. GBW 13700.
  6. SHELF U POINTS 26 & 28 TO BE STRAPPED WHEN RESISTANCE OF JUNCTION EXCEEDS 200Ω.

■ SLOW RELEASE    ⊗ SLOW OPERATE

**BOTHWAY JUNCTION RELAY SET MULTI-PARTY LINE UNIT U.A.X. N.Z 13R**

RETRACTED FROM ISS. 2 22-11-54 & METRICATED 157632 2. 11-3-55		ORDER	ISS. DATE	APP.
AMENDMENT PARTICULARS		SIZE	SIZE	
NZ PO	DRAWN	CHKD	WIRING	CIRCUIT
GBW 13670				

