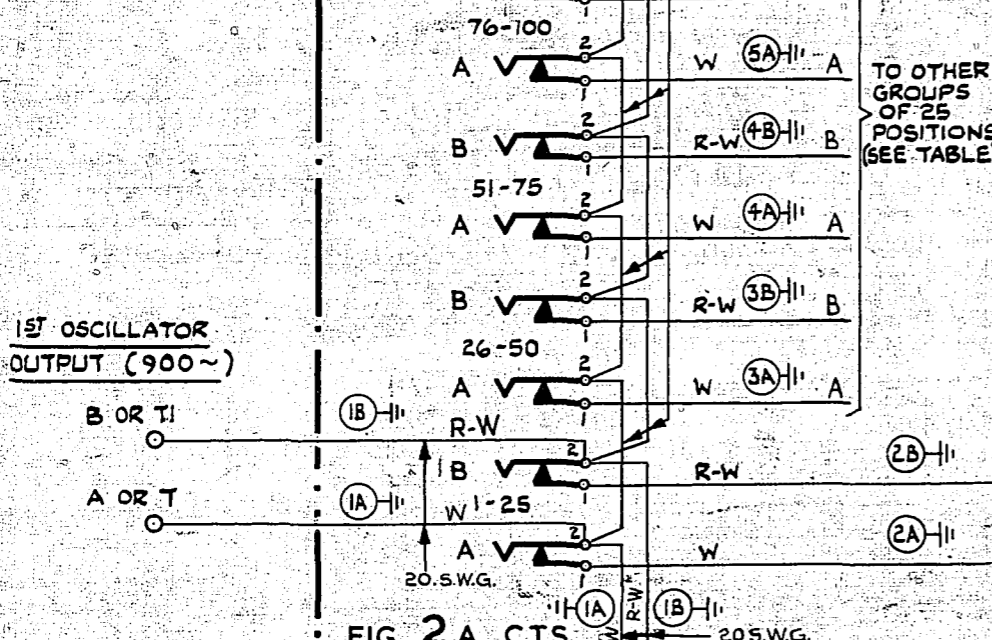
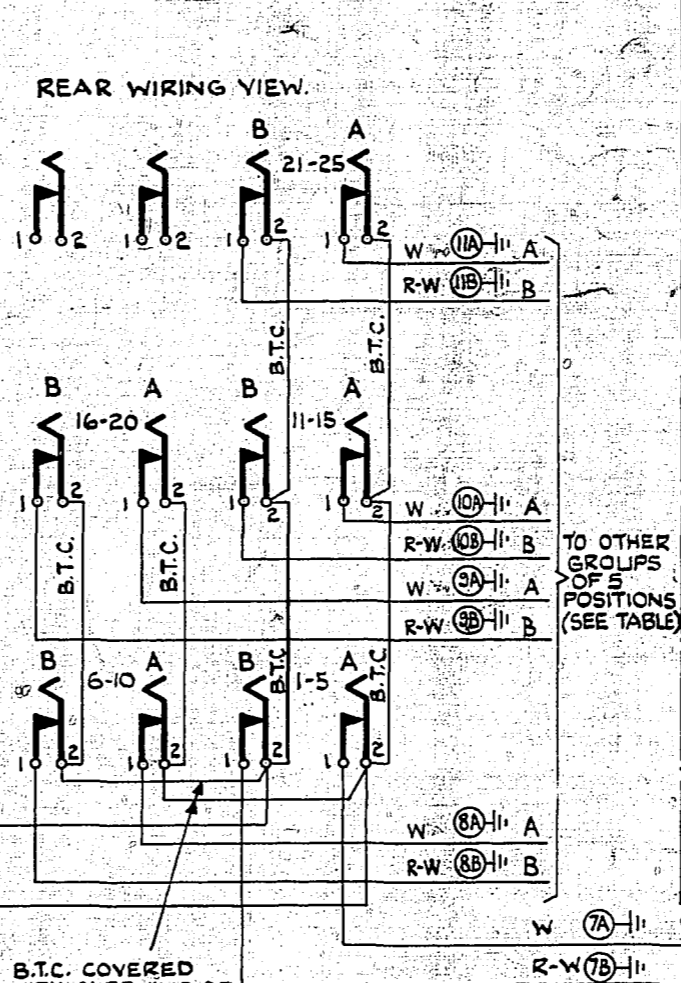


**FIG. 1.**  
**OSCILLATOR**  
**OUTPUT**  
FROM 900 C.P.S.  
OSCILLATOR  
GBW 13480  
(EXPLANATORY ONLY)  
NOTE 7



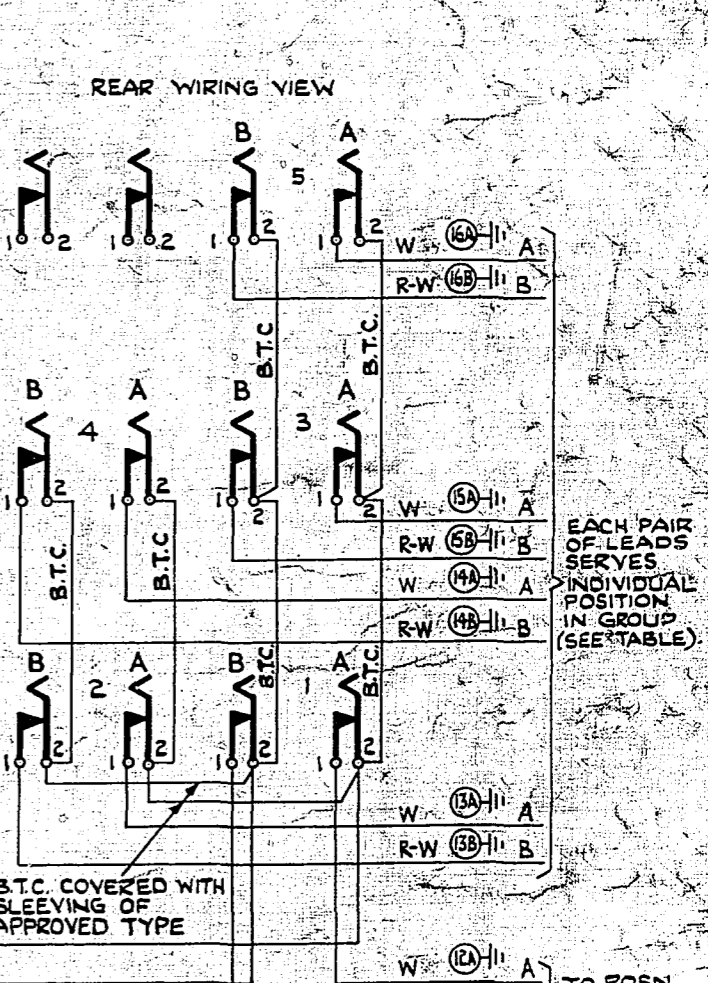
**FIG. 2 A. C.T.S.**  
FIRST DISTRIBUTION  
NOTES 2 & 6  
TO SET 1A WIRED AS SET 1, NOTE 3.

**B BREAK JACKS** (UP TO 5 SETS, EACH SET TO SERVE 5, 10, 15, 20 OR 25 POSITIONS AS REQUIRED) ON FIRST POSITION OF GROUP



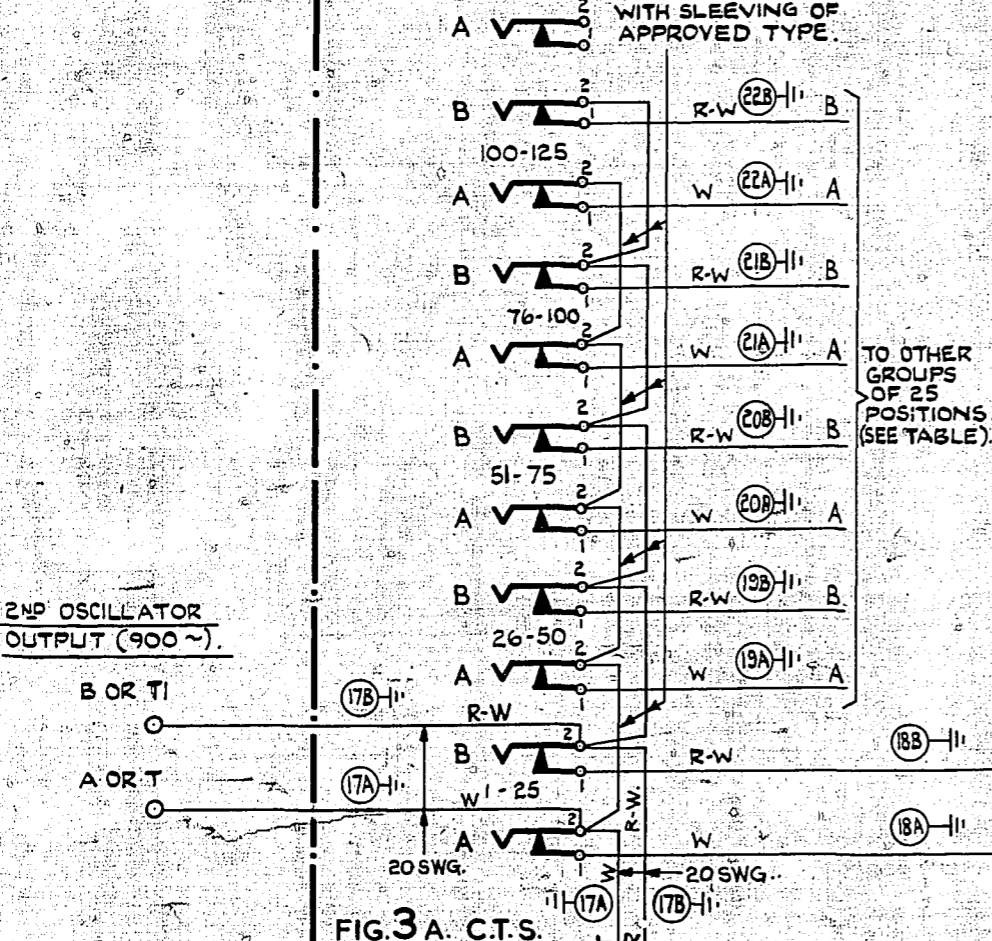
**FIG. 2 B. MAN. BOARD POSN.**  
FIRST DISTRIBUTION  
NOTES 2 & 6

**C BREAK JACKS** (UP TO 25 SETS, 1 SET PER GROUP OF 5 POSITIONS) ON FIRST POSITION OF GROUP



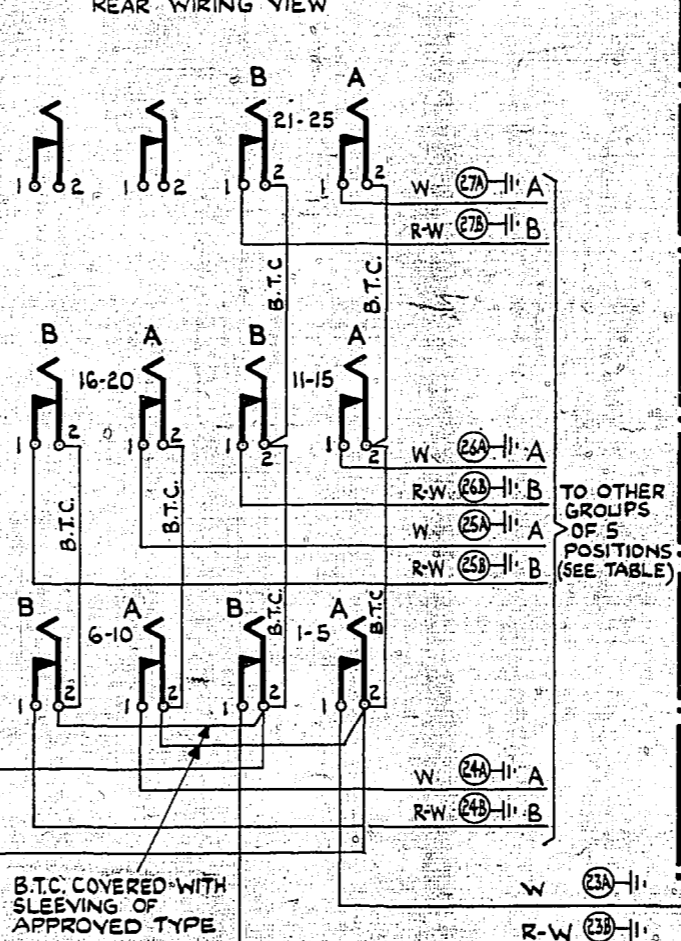
**FIG. 2 C. MAN. BOARD POSN.**  
FIRST DISTRIBUTION  
NOTES 2 & 6

**A BREAKS JACKS** (1 SET PER DISTRIBUTION) REAR WIRING VIEW.



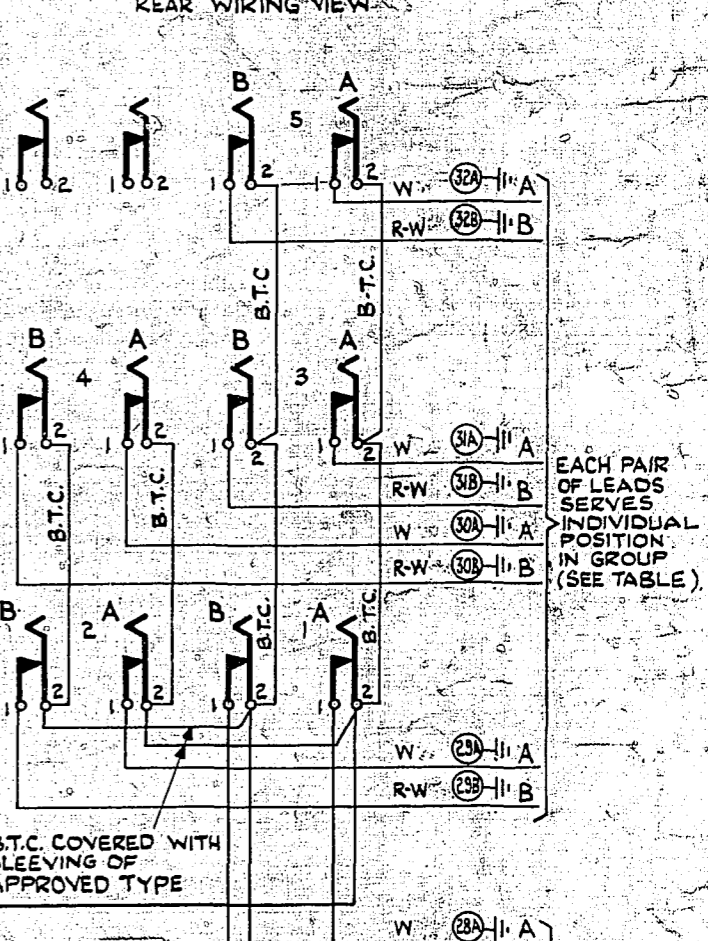
**FIG. 3 A. C.T.S.**  
SECOND DISTRIBUTION  
NOTE 2  
TO SET 1A WIRED AS SET 1, NOTE 3.

**B BREAK JACKS** (UP TO 5 SETS, EACH SET TO SERVE 5, 10, 15, 20 OR 25 POSITIONS AS REQUIRED) ON FIRST POSITION OF GROUP



**FIG. 3 B. MAN. BOARD POSN.**  
SECOND DISTRIBUTION  
NOTE 2

**C BREAK JACKS** (UP TO 25 SETS, 1 SET PER GROUP OF 5 POSITIONS) ON FIRST POSITION OF GROUP



**FIG. 3 C. MAN. BOARD POSN.**  
SECOND DISTRIBUTION  
NOTE 2

**DISTRIBUTION SCHEDULE**

NO OF TIMING CORDS PER POSN.	MAX NO OF POSNS SERVED PER DISTRIBUTION	POSITIONS SERVED BY BREAK JACKS															
		MAIN BREAK JACKS A					LAST CONNECTED INTERMEDIATE BREAK JACKS B					LAST CONNECTED INDIVIDUAL BREAK JACKS C					
		1	2	3	4	5	1	2	3	4	5	1	2	3	4	5	
4	C.T.C.	125	1-25	26-50	51-75	76-100	101-125	101-105	106-110	111-115	116-120	121-125	121	122	123	124	125
5	C.T.C.	120	1-25	26-50	51-75	76-100	101-120	101-105	106-110	111-115	116-120	116	117	118	119	120	
6	C.T.C.	100	1-25	26-50	51-75	76-100	76-80	81-85	86-90	91-95	96-100	96	97	98	99	100	
7	C.T.C.	85	1-25	26-50	51-75	76-85	76-80	81-85				81	82	83	84	85	
8	C.T.C.	75	1-25	26-50	51-75	51-55	56-60	61-65	66-70	71-75	71	72	73	74	75		
9	C.T.C.	65	1-25	26-50	51-65	51-55	56-60	61-65			61	62	63	64	65		
10	C.T.C.	60	1-25	26-50	51-60	51-55	56-60				56	57	58	59	60		

- NOTES**
- THE ARRANGEMENTS SHOWN ARE TYPICAL.
  - IN CASES WHERE OVER 600 (C.T.C.) TIMING CORDS WANT TO BE CATERED FOR, THE TOTAL NUMBER OF POSITIONS SERVED BY THE 1st DISTRIBUTION MUST BE A MULTIPLE OF 5. E.G. IN THE CASE OF 603 TIMING CORDS EQUIPPED 9 PER POSITION, THE LAST POSITION SERVED BY THE 1st DISTRIBUTION WILL BE 65, LEAVING 18 TIMING CORDS TO BE SERVED BY THE 2nd DISTRIBUTION.
  - SET 1A TO BE PROVIDED FOR A SECOND SUITE OF POSITIONS WITHIN THE LIMITS OF EACH DISTRIBUTION.
  - IN CASES WHERE LESS THAN 4 (C.T.C.) TIMING CORDS PER POSITION ARE REQUIRED, THE NUMBER OF TIMING CORDS (FOR DISTRIBUTION PURPOSES) SHALL BE ASSUMED TO BE THE SAME AS FOR THE PRECEDING POSITION.
  - ALL INTERCABLING FROM C.T.S. TO POSITION CONNECTION RACK VIA JACKS TO BE SCREENED WIRE PAIR. SHEATHING TO BE BONDED AND EARTHED IN THE STANDARD MANNER TO POSITION EARTH TERMINAL.
  - WITH UP TO 5 POSITIONS (ULT.) C JACKS ONLY (1 SET) ARE PROVIDED AND MOUNTED ON C.T.S. WITH 6-25 POSITIONS (ULT.) 1 SET OF B JACKS MOUNTED ON C.T.S. AND C JACKS AS REQUIRED, ARE PROVIDED. WITH OVER 25 POSITIONS (ULT.) SETS OF A, B & C JACKS ARE PROVIDED AS REQUIRED.
  - WHEN OSCILLATORS ARE NOT SUPPLIED, BOTH FEEDS IN FIG. 1 SHOULD BE CONNECTED IN PARALLEL TO 900~ TONE FROM RINGING MACHINE VIA A.E.R. SUPPLY AND DISTRIBUTION JACKS.
  - ALL WIRING NOT OTHERWISE SPECIFIED TO BE 25 SWG.

NOT TO BE USED FOR NEW WORK.

LIMITATION OF USE NOTE ADDED (66675)		24	12-62	REA
1/3 OSC LEADS WERE L.C. NOTE B ADDED		23		V
AKB JACK DESIGNATIONS WERE T & R RESPECTIVELY		22		
AMENDMENT PARTICULARS		ISSUE DATE	APPD	SIZE: M 50V s
NZPO	DRAWN: R.J.L.	CHECKED: F.J.O.	WIRING CIRCUIT: 12	GBW 13470