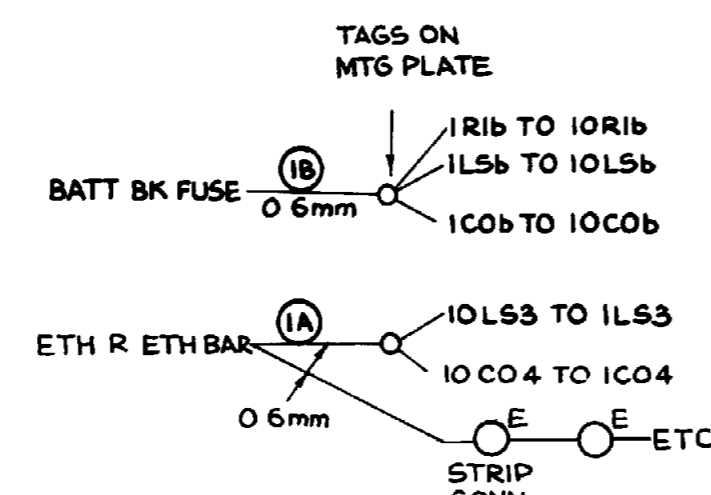


- NOTES**
- FOR EXTENSIONS BARRED DIRECT ACCESS TO MAIN EXCHANGE CUT STRAPS SHOWN — — & ADD STRAPS SHOWN — — —
 - CUT STRAPS H C ON UNALLOTTED LINES
 - FOR WIRING OF LEADS MARKED Ø SEE RELEVANT COMMON SERVICE DIAGRAM
 - ALL WIRING TO BE 0.5mm UNLESS OTHERWISE SPECIFIED PLATE STRAPPING TO BE 0.6mm OR 0.5mm IF 0.5mm IS USED COLOURS IN BRACKETS TO BE DISREGARDED
 - FUSE 1.5A PER 10 CCTS
 - GBN NUMBERS SHOWN IN BRACKETS REFER TO EQUIPMENTS MANUFACTURED TO SPECIFICATIONS 05 1035 & 05 1058



OUTLETS TO BE MULTIPLIED & WIRED

20 LINE PABX										35 & 49 LINE PABX									
EXTN NOS	LF	CS	ES	EF	B P O OUTLETS						LF	EF	B P O OUTLETS						
NZ DIAL	HF	BD	H	HJ	+	-	H	HJ	M	NZ DIAL	HF	BD	H	HJ	+	-	H	HJ	M
89	4	4	4	4	4	4	4	4	4	02	02	50							
88	5	5	5	5	5	5	5	5	5	21	21								
87	6	6	6	6	6	6	6	6	6										
86	7	7	7	7	7	7	7	7	7										
85	8	8	8	8	8	8	8	8	8										
84	9	9	9	9	9	9	9	9	9										
83	10	10	10	10	10	10	10	10	10										
82	11	11	11	11	11	11	11	11	11										
81	12	12	12	12	12	12	12	12	12										
80	13	13	13	13	13	13	13	13	13										
79	15	15	15	15	15	15	15	15	15										
78	16	16	16	16	16	16	16	16	16										
77	17	17	17	17	17	17	17	17	17										
76	18	18	18	18	18	18	18	18	18										
75	19	19	19	19	19	19	19	19	19										
74	20	20	20	20	20	20	20	20	20										
73	21	21	21	21	21	21	21	21	21										
72	22	22	22	22	22	22	22	22	22										
71	23	23	23	23	23	23	23	23	23										
70	24	24	24	24	24	24	24	24	24										
CALL WAITING PARKING POSN							25												25

NZ NOTES
A ON SOME 35 LINE SYSTEMS THE HF MULT WIRING IS BROWN INSTEAD OF WHITE

EXTENSION LINE CIRCUITS 20&35/49 LINE PABXS

REDRAWN & METRICATED (157608) 3B 6 9 78 FJM
 NZ NOTE A ADDED (122098) 3A 4 12 8

AMENDMENT PARTICULARS ISS DATE APP SIZE AI 30V W

CALL WAITING PARKING POSN 01 - - - - - 50

NZPO DRAWN CHECKED WIRING CIRCUIT

GBW 13210