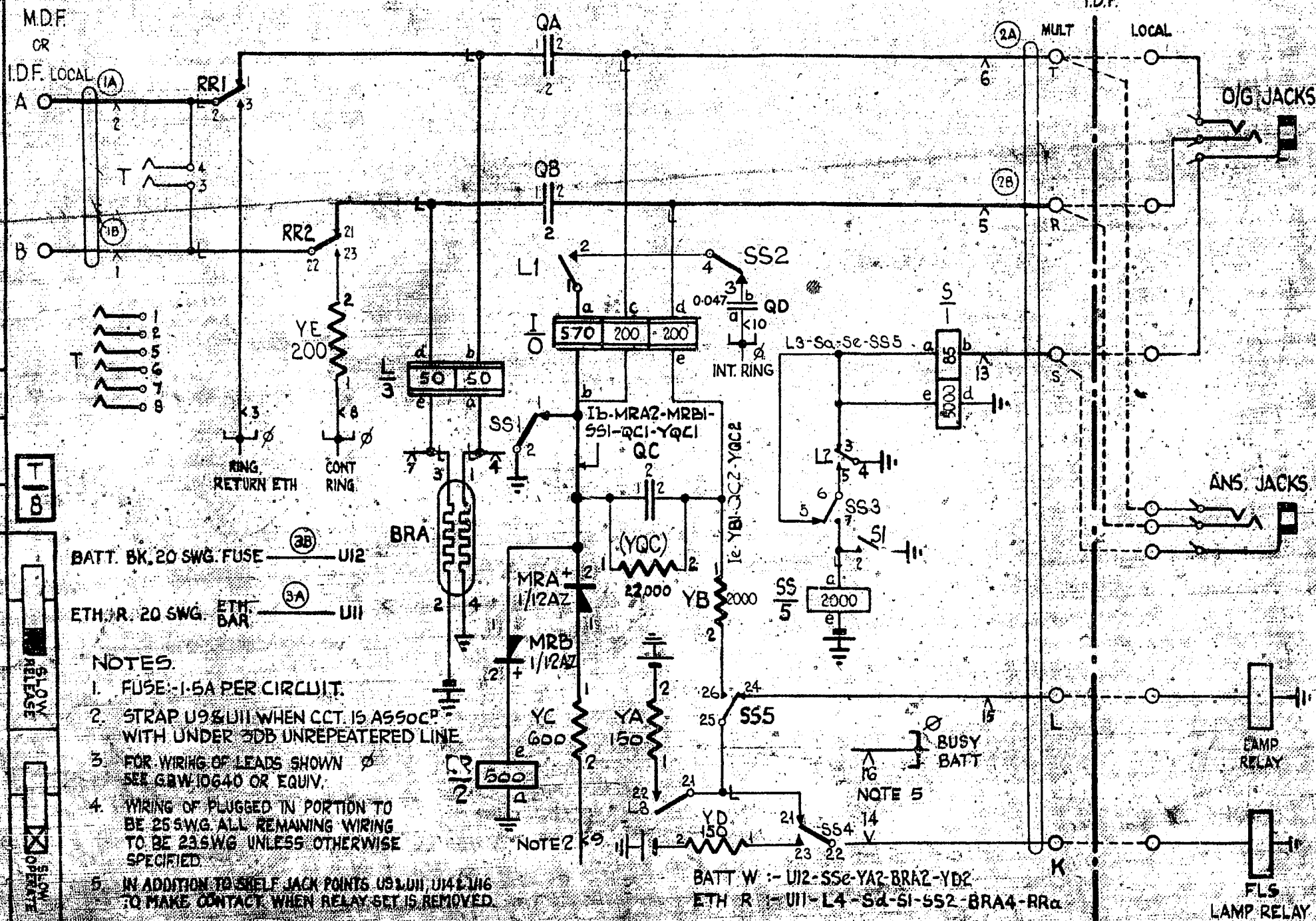


F.U. DANNEVIRKE.

SHOWN FOR EXPLANATORY PURPOSES ONLY



NOTES

1. FUSE: 1.5A PER CIRCUIT.
2. STRAP U9&U11 WHEN CCT. IS ASSOC. WITH UNDER 20DB UNREPEATERED LINE.
3. FOR WIRING OF LEADS SHOWN SEE GBW 10640 OR EQUIV.
4. WIRING OF PLUGGED IN PORTION TO BE 25 SWG. ALL REMAINING WIRING TO BE 23 SWG UNLESS OTHERWISE SPECIFIED.
5. IN ADDITION TO SHELF JACK POINTS U9, U11, U14 & U16 TO MAKE CONTACT WHEN RELAY SET IS REMOVED.

BATT W :- U12-SS2-YA2-BRA2-YD2
 ETH R :- U11-L4-Sd-S1-SS2-BRA4-RRa

1 B

SHOW RELEASE

SHOW OPERATE

NZPD

AMENDMENT PARTICULARS

NT RINGING PROVIDED (86020)

ISSUE DATE 14-10-68

REF: 553-2-11

SIZE F 1 50

GBW 13050 MOD. A

SLEEVE CONTROL SYSTEM
 TRUNK SUBSCRIBER C.B.
 WITH BALLAST RESISTANCE
 2000 TYPE