

EXPLANATORY ONLY

MANUAL I.D.F. MULT

NOTES

- FUSE - 1.5A. PER CIRCUIT.
- ALL WIRING TO BE 25 SWG UNLESS OTHERWISE SPECIFIED.
- U9 & U11 TO BE STRAPPED WHEN CIRCUIT IS ASSOCIATED WITH AN UNDER 346 UNREPEATERED LINE.
- IN ADDITION TO SHELF JACK POINTS U9 & U11, U14 & U16 TO MAKE CONTACT WHEN RELAY SET IS REMOVED.
- Ø FOR WIRING SEE GBW 10640 OR EQUIV.
- RELAY DR IS DIFFERENTIALLY CONNECTED.
- RELAY G IS NORMALLY OPERATED.
- WHEN THIS CIRCUIT IS USED ON METALLIC LINES OR AS PHANTOM CIRCUIT ON PHANTOM LINES, DISCONNECT STRAP U26-U30 SHOWN AND CONNECT STRAPS U18-U24, U25-U31 & U26-U32, SHOWN. WHEN THIS CIRCUIT IS USED ON PHANTOM LINES AS SIDE CIRCUIT DISCONNECT STRAPS SHOWN AND CONNECT STRAP

NZ NOTES:-

A SEE NZ DRAWING 6510 FOR DETAILS OF PHANTOM CIRCUIT ARRANGEMENTS.
SEE NZ DRAWING 24870 FOR DETAILS OF TYPICAL DIALLING CIRCUIT ARRANGEMENTS

BATT. W. U12-R2b-R4b-M1e-LFe-S5e-R12b-R12b-R4b-R5b-R6b-R7b.
ETH. R. U11-R10q-R11q-LL21-S1-DR1-M1-L1-A21-TRI/E-BRq-Gq-CAq-LF21-LF1-RRq-S52b.

BATT. BK. 22 SWG. FUSE U12
ETH. R. 22 SWG. ETH BAR U11

TJ 8

NZPD	AMENDMENT	DATE	BY	REASON
	1	27/12/53	WJ	
GBW 13030	SIZE	M	30	W
	DATE	ISSUE	APPROV.	BY

SCS TRUNK GENERATOR SIGNALLING AND D.C. DIALLING PAD CONTROL 2000 TYPE

TO TRK TEST RACK DIRECT OR VIA CARRIER I.D.F. OR VIA M.D.F. & CARRIER I.D.F. OR VIA M.D.F. (C.O.C.) OR VIA M.D.F. & CARRIER I.D.F. (SIDE & PHANTOM CTS.) NZ NOTE A

METALLIC OR PHANTOM CTS.

TO TRK TEST RACK VIA M.D.F. (LINE SIDE STRIP CONN.)

TO TRK TEST RACK VIA CARRIER I.D.F.

ANS JACKS LAMP RELAY

ANS JACKS LAMP RELAY

FIG. 2. SIGNALLING ARRANGEMENTS OVER SIDE CCTS. & PHANTOM WITH TELEGRAPH (SHOWN) & WITHOUT TELEGRAPH (SHOWN)

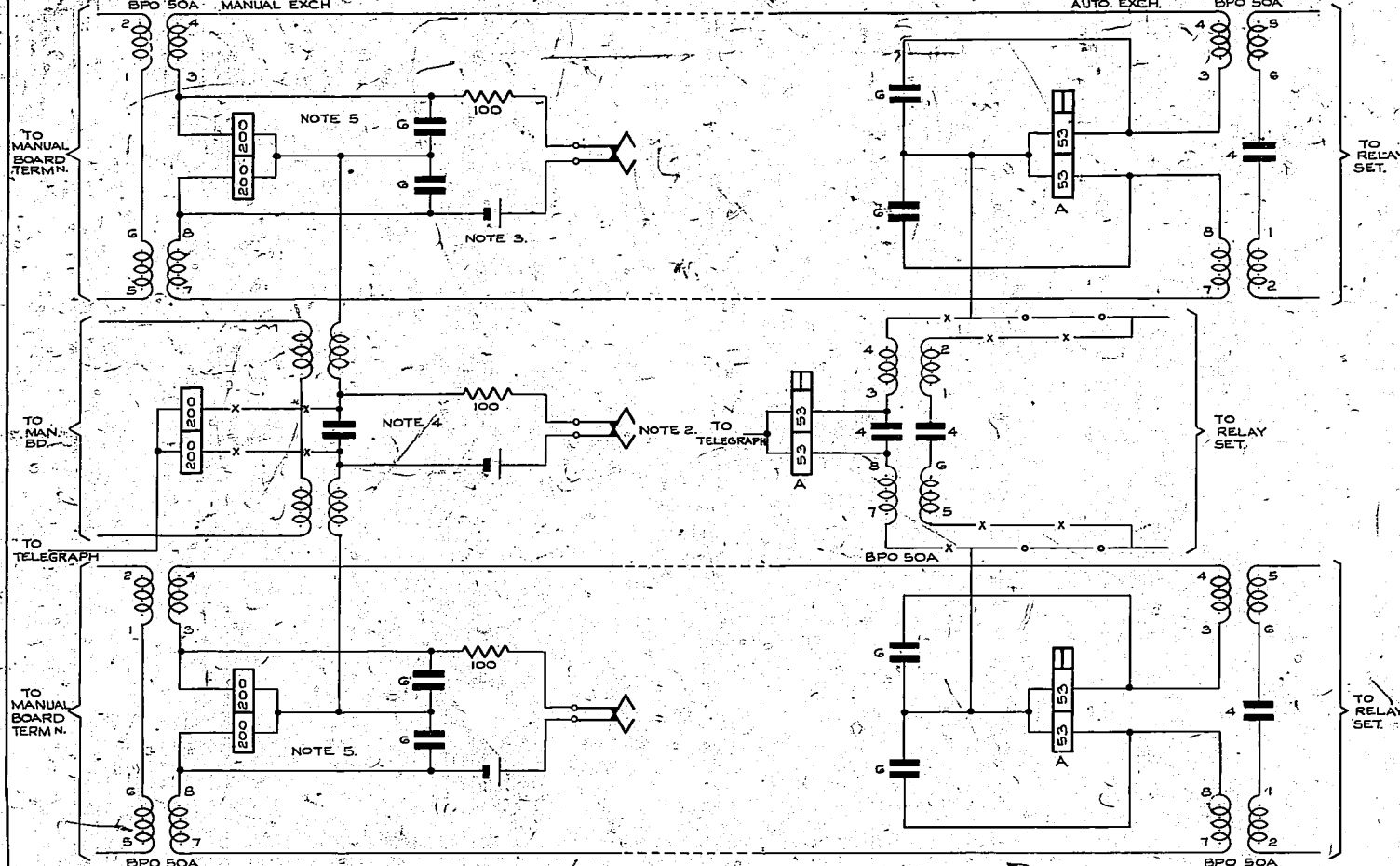


FIG. 3. SIGNALLING ARRANGEMENT FOR LOOP BATTERY DIALING OVER NON-SUPERPOSED METALLIC CIRCUIT

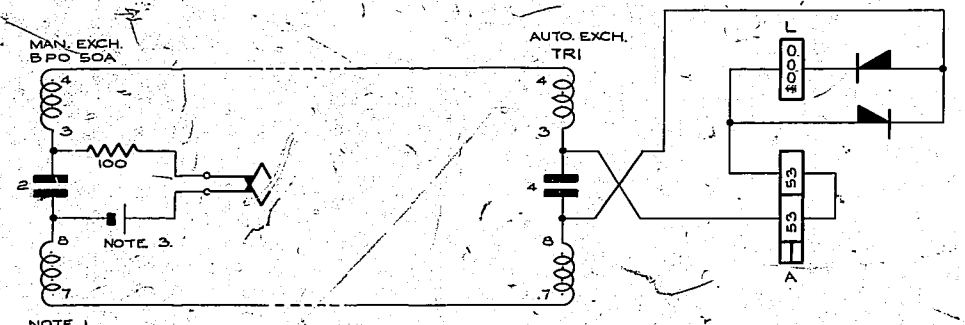


FIG. 4. SIGNALLING ARRANGEMENT FOR LOOP BATTERY DIALING OVER SUPERPOSED METALLIC CCT.

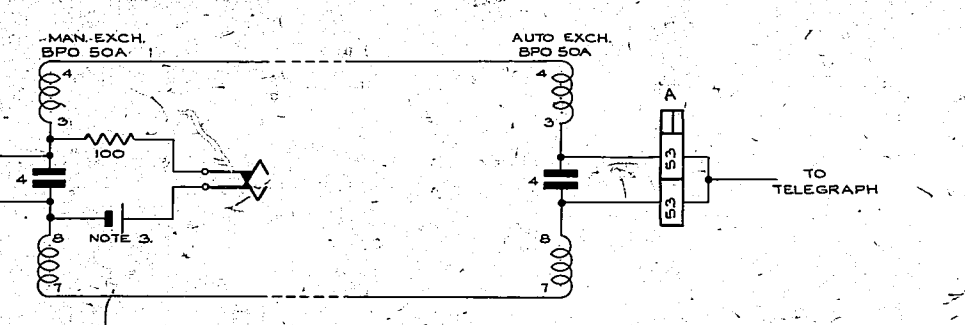


FIG. 5. SIGNALLING ARRANGEMENT FOR SIMPLEX BATTERY DIALING OVER METALLIC OR PHANTOM CCTS.

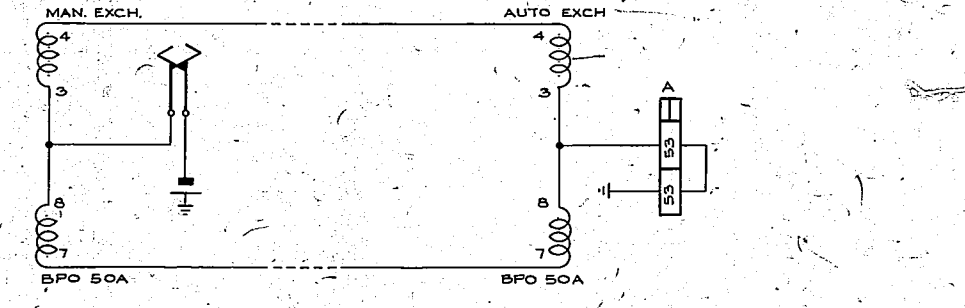


FIG. 6. SIGNALLING ARRANGEMENT FOR SUPERPOSED CCT. WITH BATTERY DIAL OVER SEPARATE SIGNALLING PATH.

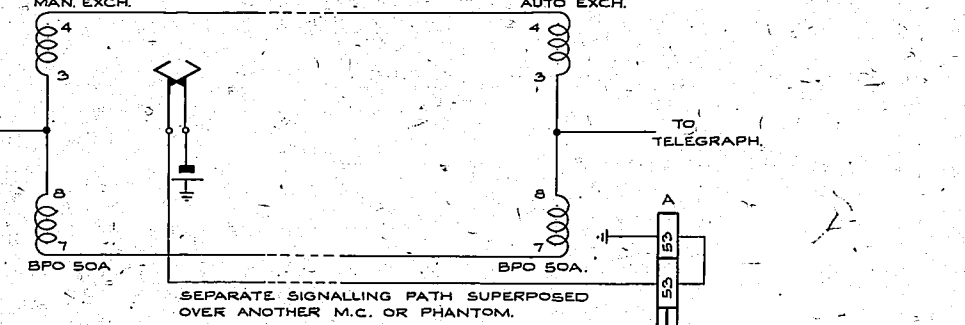


FIG. 7. SIGNALLING ARRANGEMENT FOR SIMPLEX EARTH DIALING OVER METALLIC OR PHANTOM CCTS.

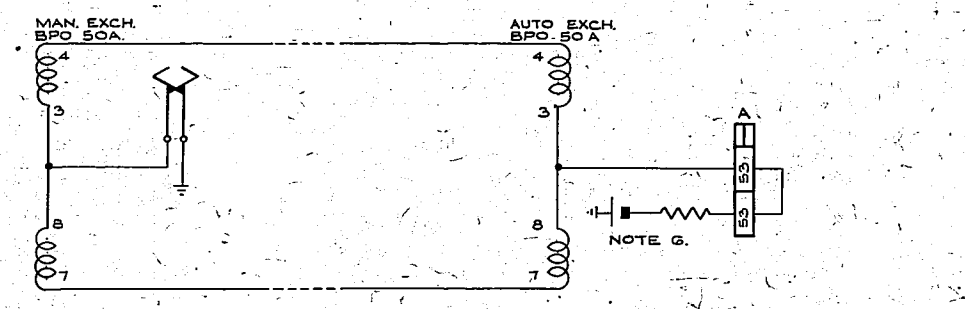


FIG. 8. SIGNALLING ARRANGEMENT FOR SUPERPOSED CCT. WITH EARTH DIALING OVER SEPARATE SIGNALLING PATH.

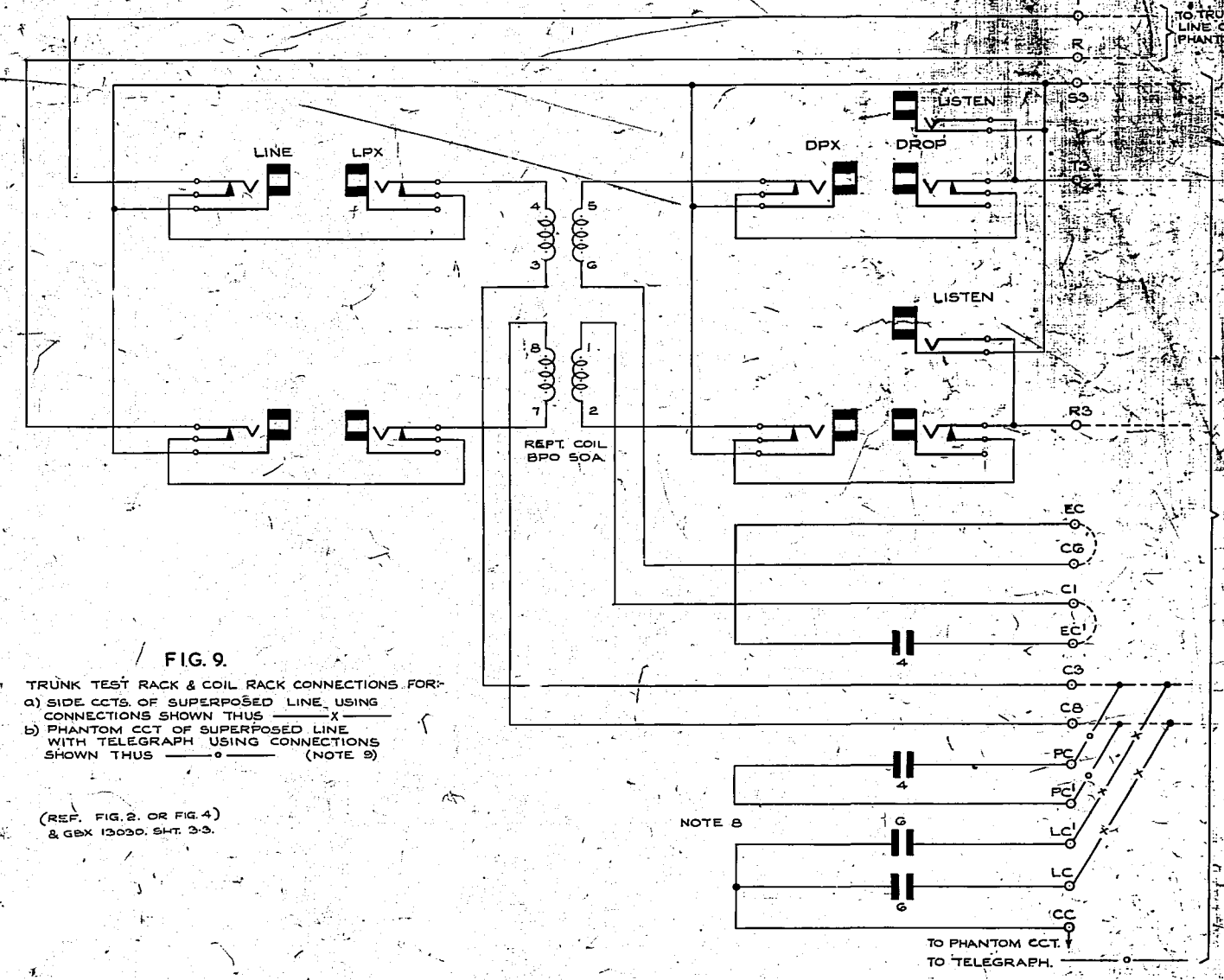
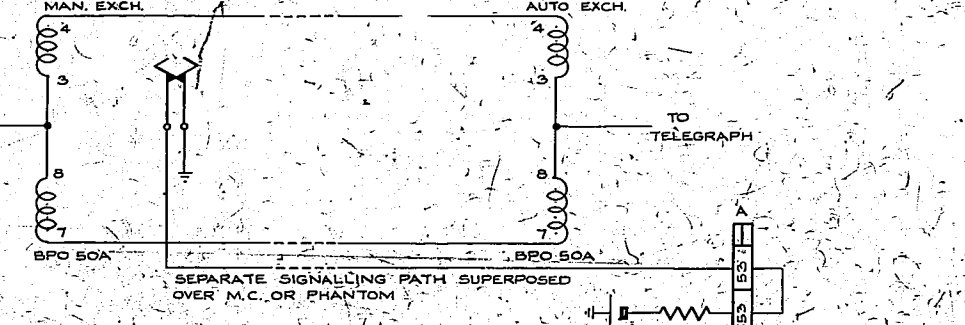


FIG. 9. TRUNK TEST RACK & COIL RACK CONNECTIONS FOR: a) SIDE CCTS. OF SUPERPOSED LINE, USING CONNECTIONS SHOWN THUS — X — b) PHANTOM CCT. OF SUPERPOSED LINE WITH TELEGRAPH USING CONNECTIONS SHOWN THUS — O — (NOTE 9)

(REF. FIG. 2. OR FIG. 4) & GBX 13030, SHT. 3-3.

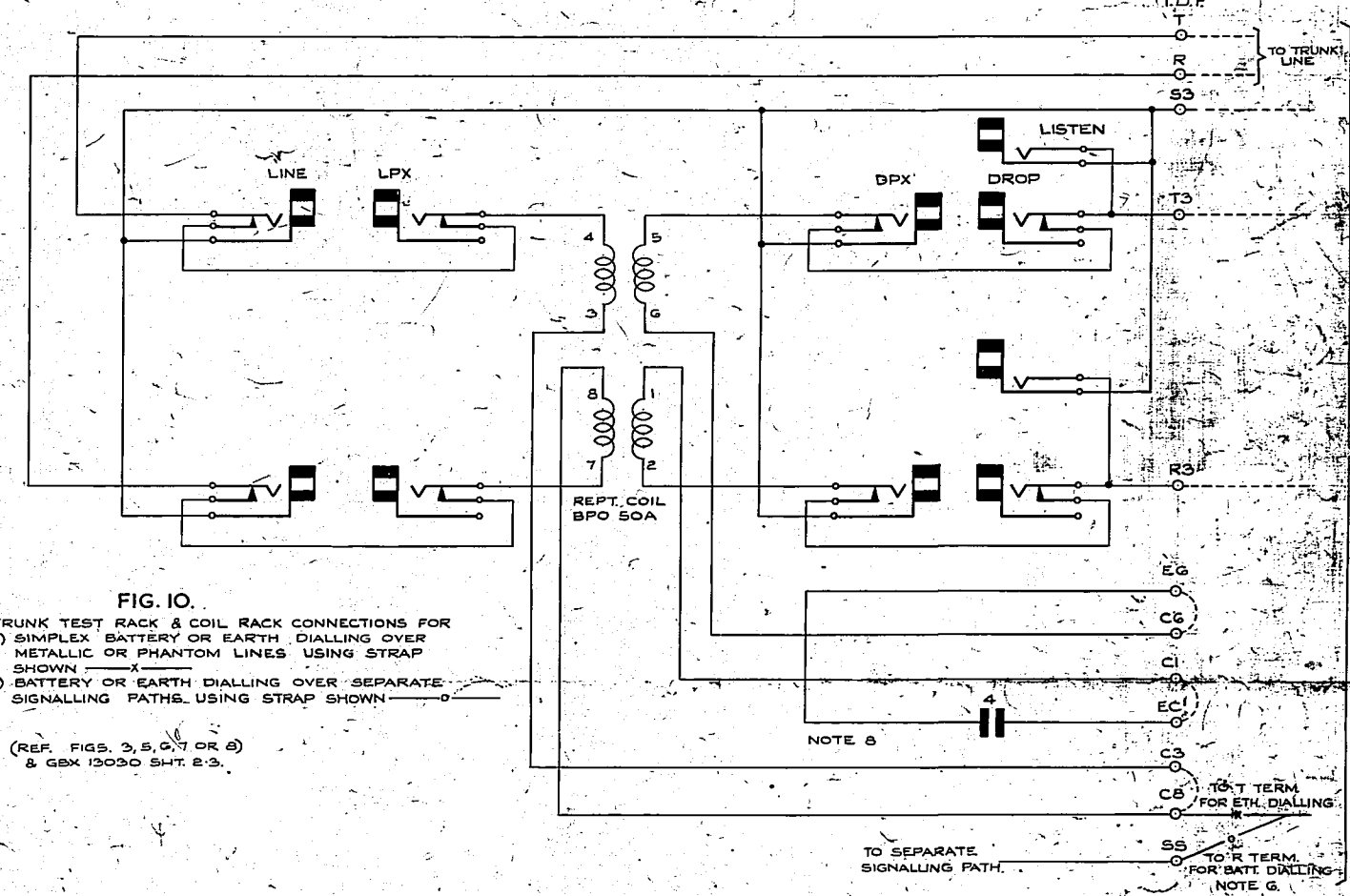
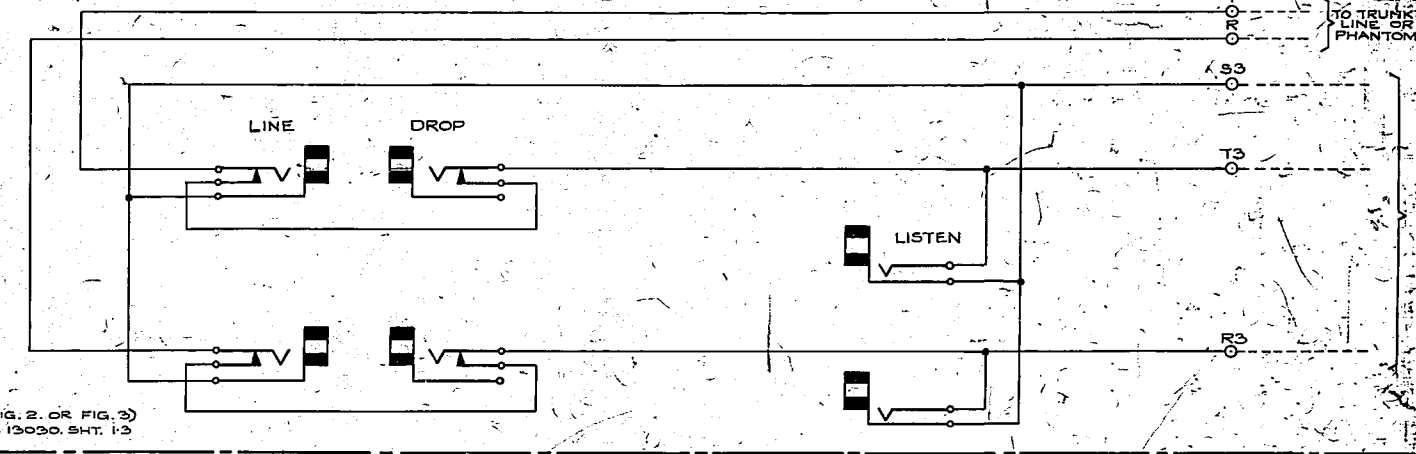


FIG. 10. TRUNK TEST RACK & COIL RACK CONNECTIONS FOR a) SIMPLEX BATTERY OR EARTH DIALING OVER METALLIC OR PHANTOM LINES USING STRAP SHOWN — X — b) BATTERY OR EARTH DIALING OVER SEPARATE SIGNALLING PATHS USING STRAP SHOWN — O —

(REF. FIGS. 3, 5, 6, 7 OR 8) & GBX 13030, SHT. 2-3.

FIG. 11. TRUNK TEST RACK & COIL RACK CONNECTIONS FOR METALLIC OR PHANTOM (OF SUPERPOSED) CCTS.



(REF. FIG. 2. OR FIG. 3) & GBX 13030, SHT. 1-3.

NOTES:-

1. LINE WINDINGS ONLY OF REPEATING COILS & TRANSFORMERS SHOWN (EXCEPT IN FIG. 2)
2. DIAL SYMBOL REPRESENTS DIAL OR DIALING RELAY CONTACT.
3. BATTERY SYMBOL REPRESENTS UNEARTHED BATTERY OR RECTIFIER SUPPLY AT MANUAL EXCH.
4. SIZE OF CAPACITORS DEPENDENT ON LINE REQUIREMENTS.
5. ALL RETARDS, RELAY COILS & CONDENSERS TO BE MATCHED TO PRESERVE PHANTOM BALANCE.
6. WHEN IMPULSING RELAY (A) IS CONNECTED TO BATTERY USE RESISTOR MOUNTED EXTERNALLY TO RELAY SET, TO LIMIT CURRENT IN RELAY TO SATURATE FIGURE.
7. RELAY A IS MOUNTED ON RELAY SET.
8. SINGLE OR BALANCED PAIRS OF CAPACITORS SUPPLIED BY N.Z.P.O. & TRAY MOUNTED ON COIL & CAPACITOR RACK IN CARRIER ROOM.

9. FOR PHANTOM CCT. WITHOUT SUPERPOSED TELEGRAPH, CONNECT AS ARRANGEMENT SHOWN IN FIG. 11.

NZ NOTES:-
A/SEE DRAWING 6510 FOR DETAILS OF PHANTOM CIRCUIT ARRANGEMENTS.
B/SEE DRAWING 24870 FOR DETAILS OF TYPICAL DIALING CIRCUIT ARRANGEMENTS.

S.C.S.		BOTHWAY TRUNK		GENERATOR SIGNALLING		D.C. DIALING		PAD CONTROL 2000 TYPE	
NZ NOTE# ADDED	(99789)	BA	27-9-73	BS-11					
NO CHANGE	ISSUE ADVANCED ONLY	(92302)	8	11-10-63	J.D.B.H.				
NO CHANGE	ISSUE ADVANCED		7						
REFS: TO FIGS. 2 TO 8 ADDED	TO FIGS. 9, 10 & 11		6						
			5						
AMENDMENT PARTICULARS		ISSUE DATE	APR	653 213-485	SIZE	M			
N.Z.P.O.	DRAWN	CHECKED	WIRING	CIRCUIT	GBW 13030 SHT. 22				

5 Centimetres 10 15 20 25 30 35 40 45 50 55