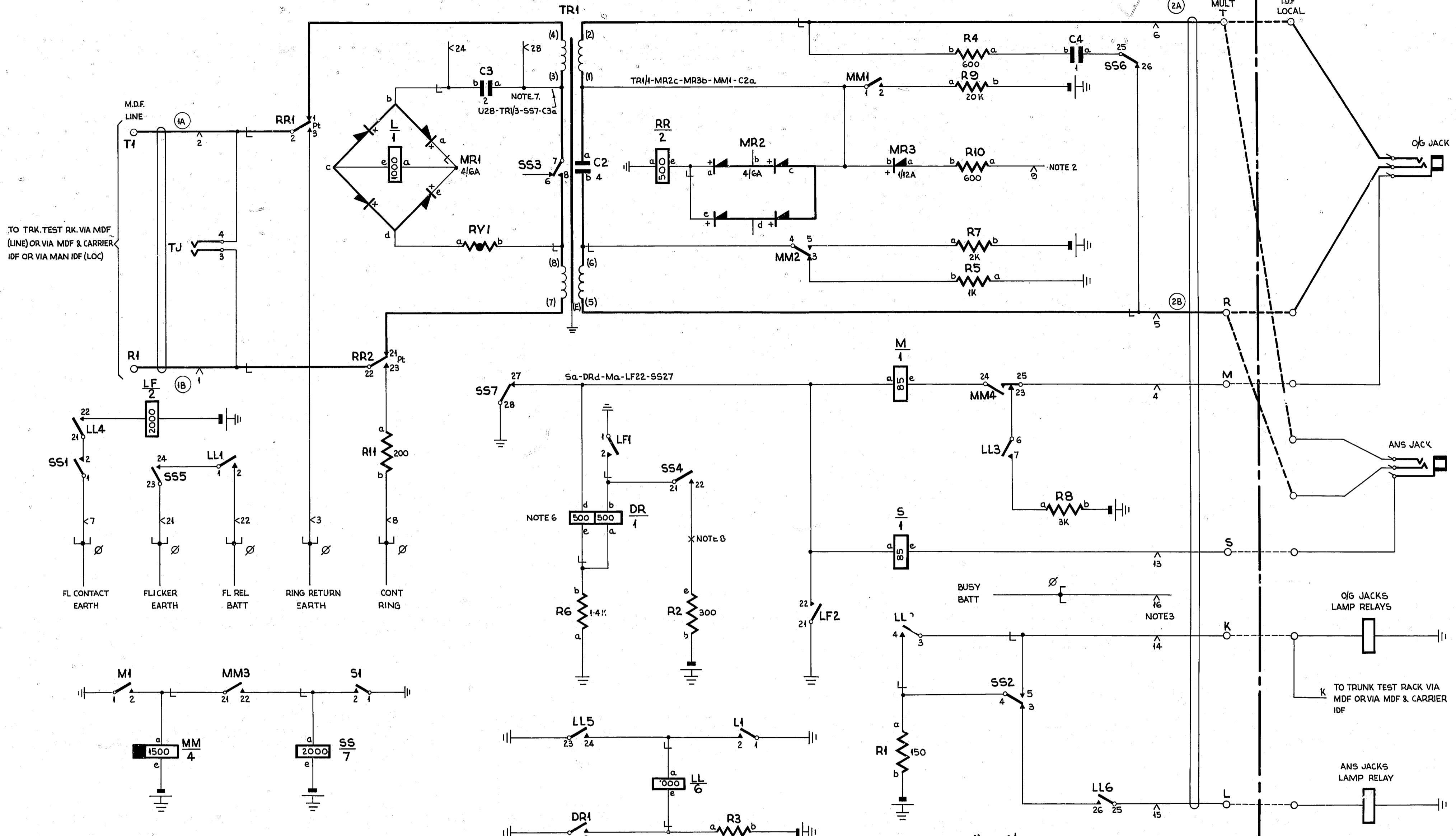


TO TRK. TEST RK. VIA MDF (LINE) OR VIA MDF & CARRIER IDF OR VIA MAN IDF (LOC)



- NOTES:-
- 1 FUSE:- 1.5A PER CIRCUIT
  - 2 U9 & U11 TO BE STRAPPED WHEN CCT. IS ASSOCIATED WITH AN UNDER 3DB UNREPEATED LINE.
  - 3 SHELF JACK POINTS U9 & U11, U14 & U16 TO MAKE CONTACT WHEN RELAY SET IS REMOVED.
  - 4 Ø FOR WIRING SEE GBW 10640 OR EQUIV.
  - 5 ALL WIRING TO BE 25 SWG UNLESS OTHERWISE SPECIFIED.
  - 6 RELAY 'DR' IS DIFFERENTIALLY CONNECTED.
  - 7 STRAP SHELF JACK POINTS U24-U28 WHEN THIS CCT. IS USED ON PHANTOM CONNECTIONS.
  - 8 WHEN ASSOCIATED WITH CORD CCTS. HAVING SLEEVE CONNECTED TO 500V BATT. AN EXTRA RES. R2A OF 280Ω IS INSERTED BETWEEN SS22 & R2a.

NZ NOTES

A SEE DRAWING 6510 FOR DETAILS OF PHANTOM CIRCUIT ARRANGEMENTS. SEE DRAWING 24870 FOR DETAILS OF TYPICAL DIALLING CIRCUIT ARRANGEMENTS.

BATT. B: 22 SWG FUSE (3B) U:2  
 EARTH. R: 22 SWG ETH BATT (3A) U:1

BATT W:- U12-R1b-R2b-R3b-LRe-MMe-LFe-SSe-R7b-R8b-R9b.  
 EARTH R:- U11-L1-LL23-S1-DR1-M1-TR1/E-LR21-LF21-LF1-RRa-SS28-R5a-R6a

FU: ALEXANDRA, ASHBURTON NEW PLYMOUTH

SLOW RELEASE		SLOW OPERATE	
<b>SLEEVE CONTROL SYSTEM</b>			
<b>BOTHWAY TRUNK</b>			
<b>GENERATOR SIGNALLING</b>			
<b>PAD CONTROL 2000 TYPE</b>			
AMENDMENT PARTICULARS		DATE	APPD
NZPO 40		DATE	APPD
DRAWN TO 45		DATE	APPD
CHECKED		DATE	APPD
WIRING		DATE	APPD
CIRCUIT		DATE	APPD
<b>GBW 13020 MODA</b>			

