

**NZPO**

DRAWN B. & J.	CHECKED D. J.	WIRING	CIRCUIT
ISSUE	DATE	Appo	
1.			
2.			
3.			
4.			
5.			

AMENDMENT PARTICULARS

RESTRICTION OF USE APPLIED SHIT 2 ADD (122334)

NOTE 3 WAS NOT SHOWN. (70919)

FIG. 2: M.D.F. RACK TYPE ADDED & TAG DESIGNS CLARIFIED

FIG. 2 CLARIFIED. NOTE 2 ADDED.

I.D.F. TAGS WERE NOT SHOWN.

TELEPHONE INTERCEPTION

EMERGENCY TECHNICIANS

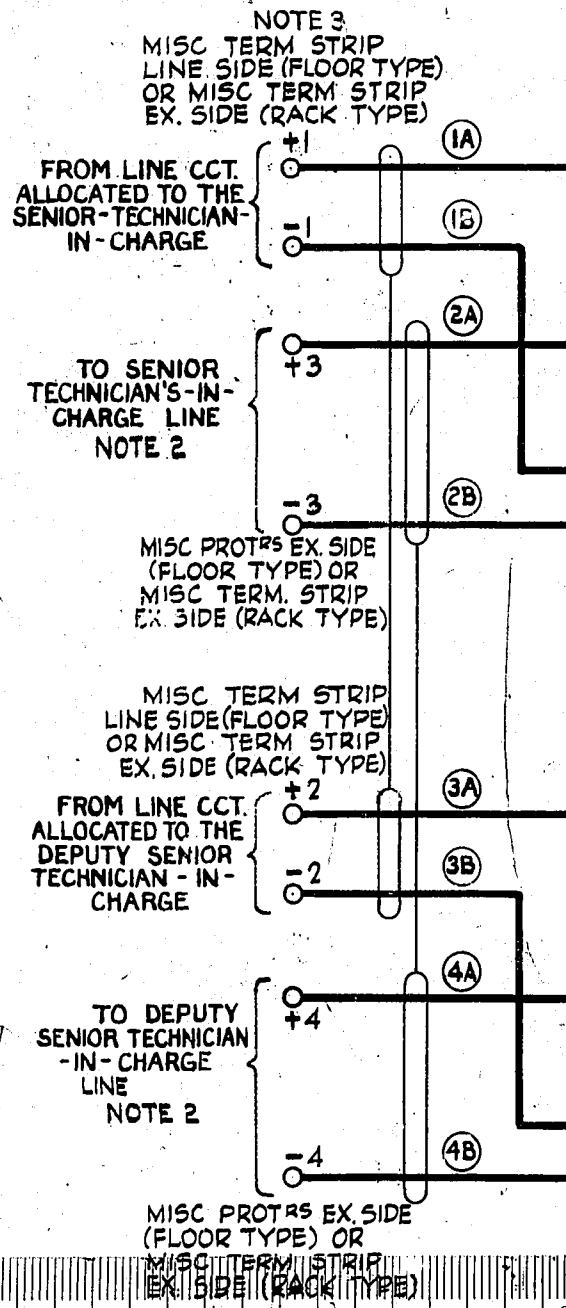
EMERGENCY TECHNICIANS

TELEPHONE INTERCEPTION

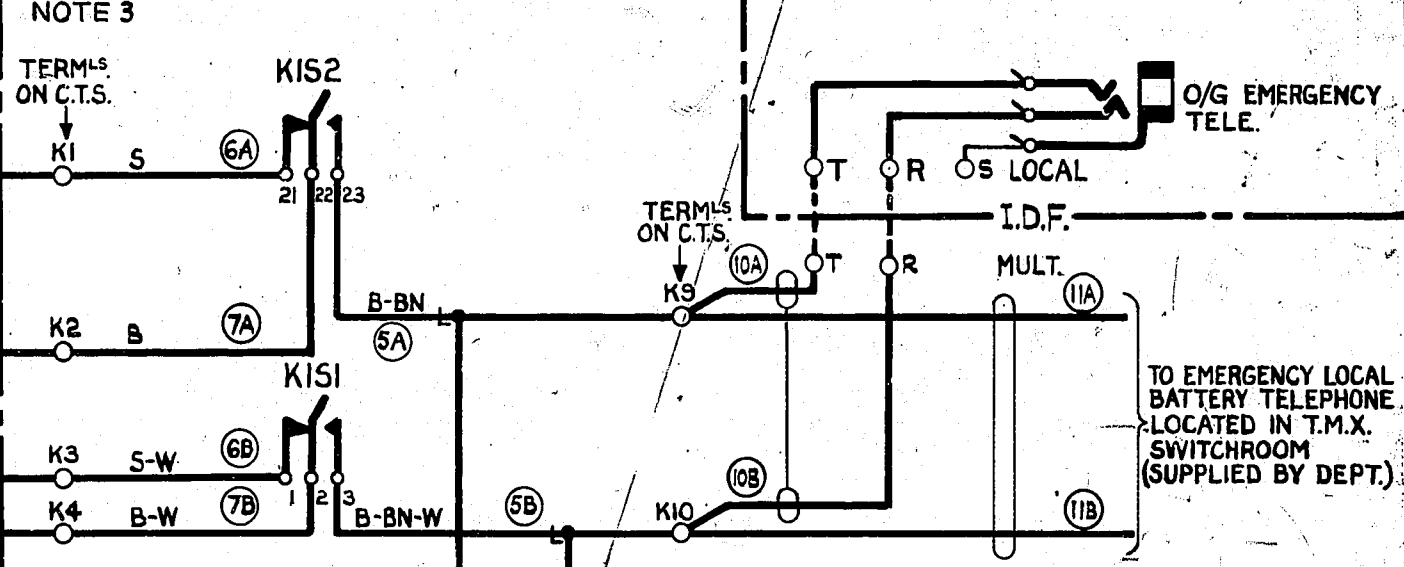
GBW 12970

SHEET 1 OF 2

**FIG. 2.**  
M.D.F.  
(FLOOR OR RACK TYPE)



**FIG. 1.**  
C.T.S.  
EMERGENCY INTERCEPT. KEYS



**NOT TO BE USED FOR NEW WORK.**

**NOTES:-**

1. ALL WIRING TO BE 0.5 mm UNLESS OTHERWISE SPECIFIED.
2. SENIOR TECHNICIAN'S AND DEPUTY'S TELEPHONE INSTRUMENTS TO BE AUTO LOCAL BATTERY TYPE.
3. IN SOME EXCHANGES THE MANUAL SWITCHBOARD IS SITUATED IN A BUILDING REMOTE FROM THE AUTO EQUIPMENT AND IN SUCH CASES THE CONNECTIONS BETWEEN THE M.D.F. MISC. TERM STRIP AND THE C.T.S. STRIP CONN ARE CABLED VIA THE I.D.F. MULT &/OR LOCAL (AUTO BUILDING) AND A MANUAL ROOM FRAME (MANUAL BUILDING).

INTERCEPT SENIOR TECHNICIAN (KIS)      INTERCEPT DEPUTY TECHNICIAN (KID)

Centimetres

**FIG. 2**  
MDF  
(FLOOR OR RACK TYPE).  
NOTE 2.

MISC. TERM. STRIP LINE SIDE (FLOOR TYPE) OR  
MISC. TERM. STRIP EX. SIDE (RACK TYPE).

FROM LINE CCT ALLOCATED  
TO THE SENIOR TECHN.-  
-IN-CHARGE

TO SENIOR TECHNICIAN'S-  
-IN-CHARGE LINE

MISC. PROTRS. EX SIDE (FLOOR TYPE) OR  
MISC. TERM. STRIP EX SIDE (RACK TYPE)

MISC. PROTRS. EX SIDE (FLOOR TYPE) OR  
MISC. TERM. STRIP EX. SIDE (RACK TYPE)

FROM LINE CCT ALLOCATED  
TO THE DEPUTY SENIOR  
TECHN.-IN-CHARGE.

TO DEPUTY SENIOR  
TECHN.-IN-CHARGE LINE.

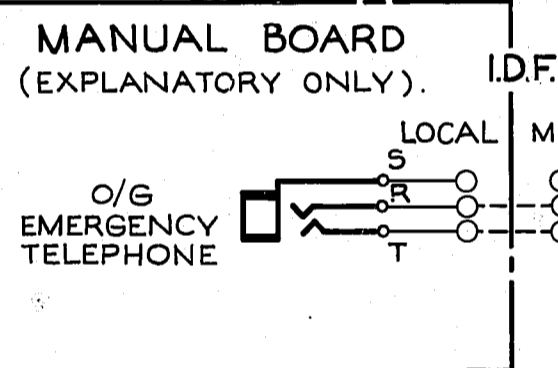
MISC. PROTRS. EX SIDE (FLOOR TYPE) OR  
MISC. TERM. STRIP EX SIDE (RACK TYPE)

**FIG. 1**  
C.T.S.  
EMERGENCY INTERCEPT KEYS

NOTE 2

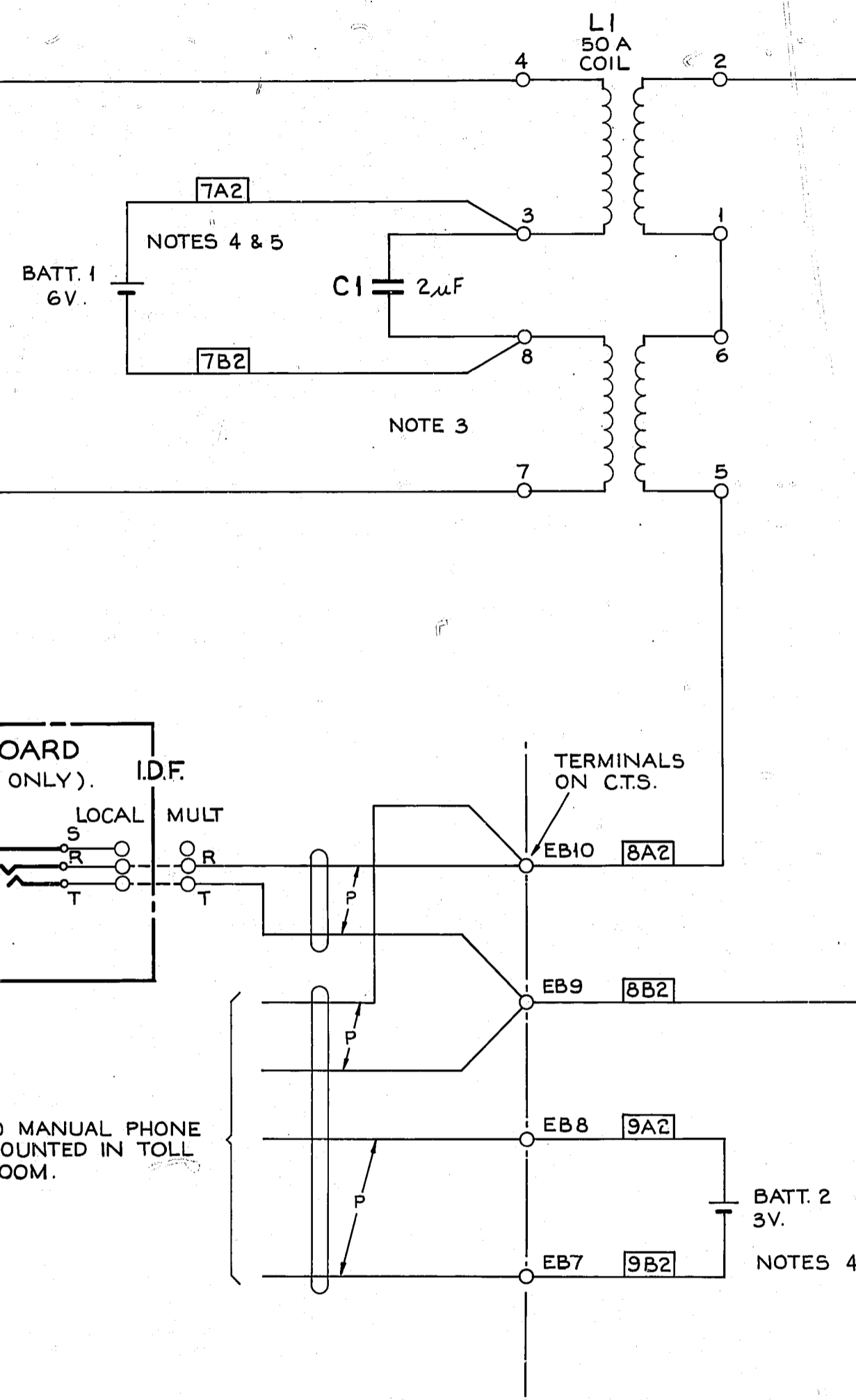
TERMINALS  
ON C.T.S.

TERMINALS ON  
C.T.S.



TO MANUAL PHONE  
MOUNTED IN TOLL  
ROOM.

**FIG. 3**  
TECHNICIANS EMERGENCY  
TELEPHONE BATTERY SUPPLY



- NOTES:-**
1. ALL WIRING TO BE 0.5mm UNLESS OTHERWISE SPECIFIED
  2. IN SOME EXCHANGES THE MANUAL SWITCHBOARD IS SITUATED IN A BUILDING REMOTE FROM THE AUTO EQUIPMENT AND IN SUCH CASES THE CONNECTIONS BETWEEN THE MDF MISC. TERM. STRIP AND THE C.T.S. STRIP CONN. ARE CABLED VIA THE IDF MULT. & LOCAL (AUTO BUILDING) AND A MANUAL ROOM FRAME (MANUAL BUILDING)
  3. EQUIPMENT MOUNTED IN T.M.X. CABLE TURNING SECTION.
  4. BATTERY SUPPLIES FIG. 3 ARE N°6 CELLS.
  5. BATTERY FEED WIRES TO BE 0.7mm

INTERCEPT SENIOR TECHN(KIS) 2  
INTERCEPT DEPUTY TECHN(KID) 2

				EMERGENCY TECHNICIANS TELEPHONE INTERCEPTION			
				(122334)	5A	27.9.74	B.5-H
AMENDMENT PARTICULARS				ISS	DATE	APD	F 753-11-14
NZPO				DRAWN	CHECKED	WIRING	CIRCUIT
				J.45			50
				GBW 12970			SHEET 2 OF 2
				55			

