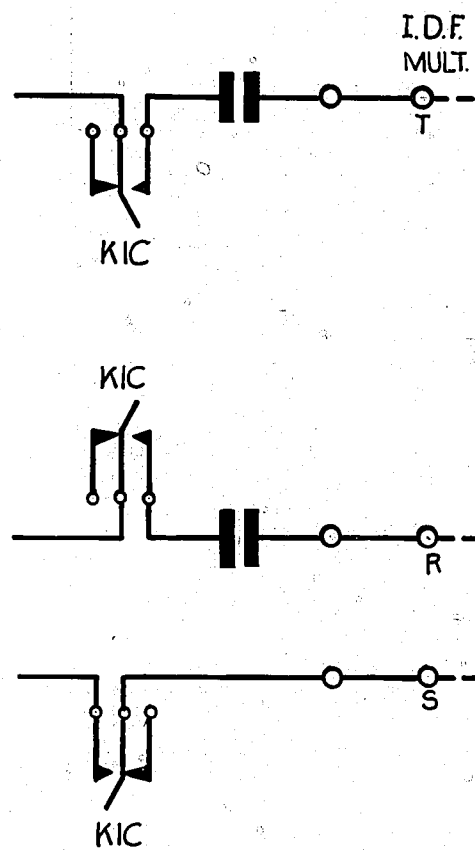
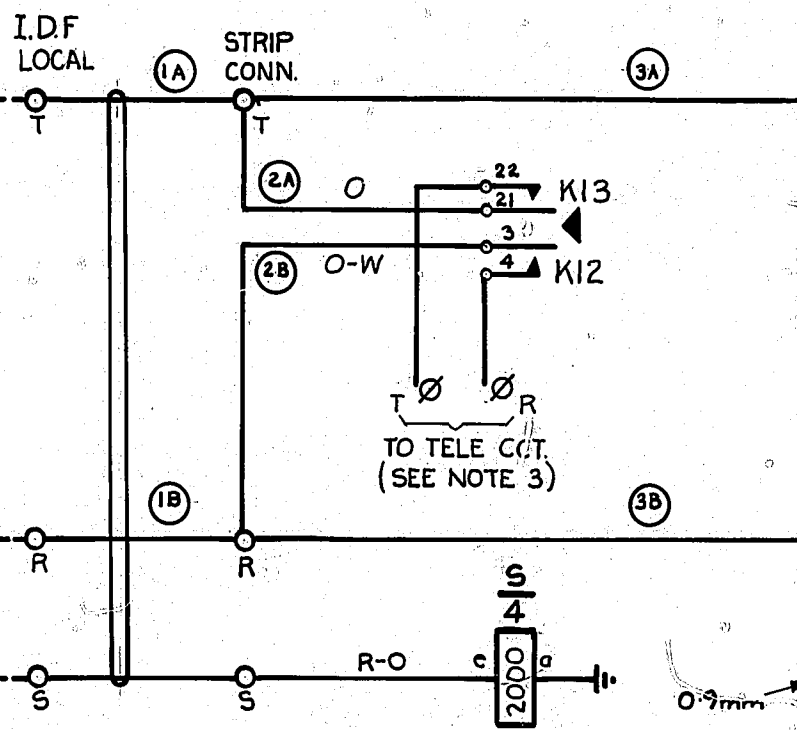


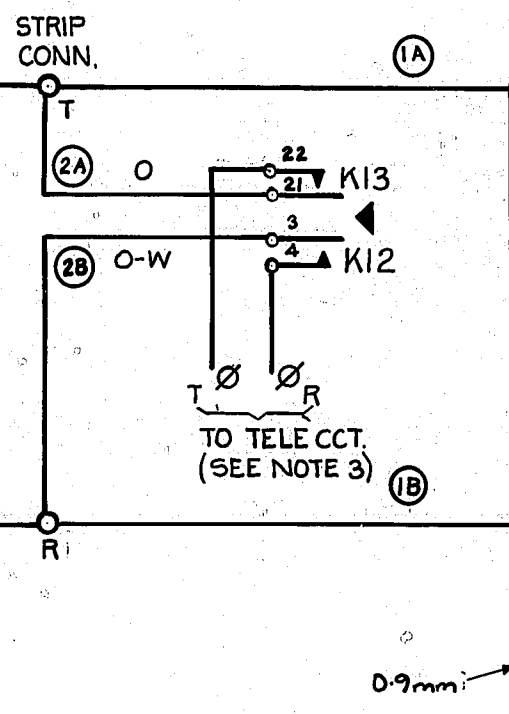
**SUPERVISOR'S DESK.**  
(GBW 12960 FIG.4). EXPLAN. ONLY.



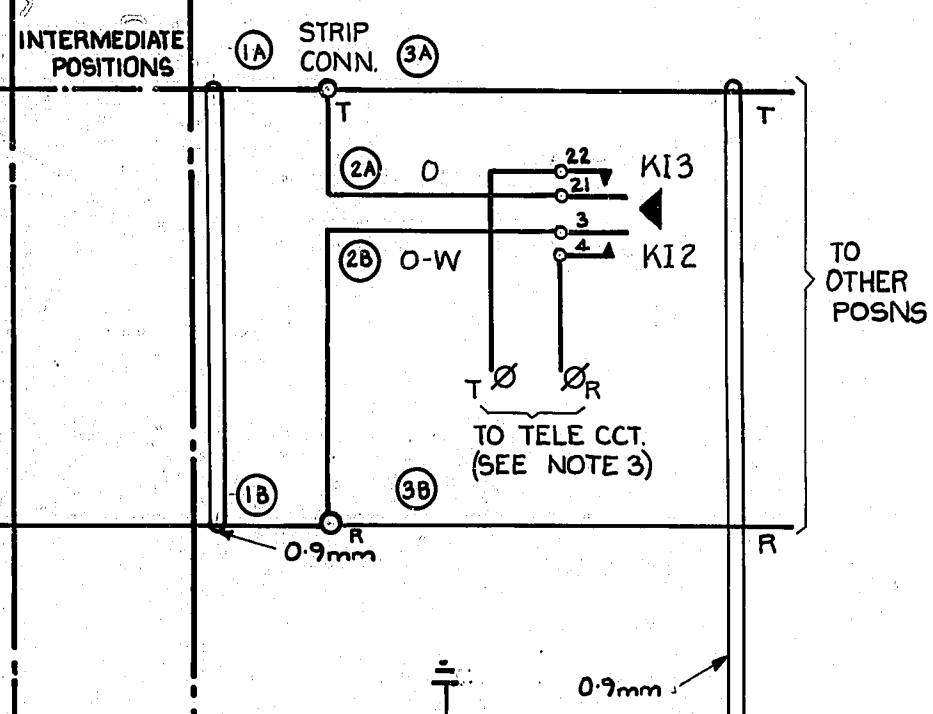
**FIG.2. 1ST. POSITION**



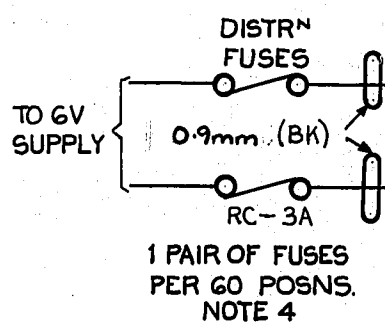
**FIG.3. ALL POSNS EXCEPT THOSE COVERED IN FIGS 2&4**



**FIG.4. 21ST. & 41ST. POSITIONS**



**FIG.1. ANS. LAMP RELAY RACK.**



**NOTES.**

1. FUSE:-1.5A SERVING POSITION CCT.
2. ALL WIRING TO BE 0.5mm UNLESS OTHERWISE SPECIFIED.
3. Ø FOR WIRING SEE GBW 12811 OR EQUIV.
4. ONE CIRCUIT PER SUITE OR 60 POSNS MAX.

POSN ETH R - S23-5a-S1  
BATT. BK 0.7mm BATT. CONN (POSN CCT)-LOe.

NOT TO BE USED FOR NEW WORK.

BATT. BK 0.7mm BATT. CONN (POSN CCT)-LOe.

TO L & D TAGS ALTERNATELY ON POSNS 22 TO 40 OR 60  
TO L & D TAGS ALTERNATELY ON POSNS 22 TO 39 OR 59.  
TO POSN 41.  
TO POSNS 22, 23, ETC. TO POSN 40 OR 42, 43, ETC. TO POSN. 60.  
TO POSNS 3, 4, 5 ETC TO POSN 20.  
TO L & D TAGS ALTERNATELY ON POSNS 3-19  
TO D & L TAGS ALTERNATELY ON POSNS 3-20

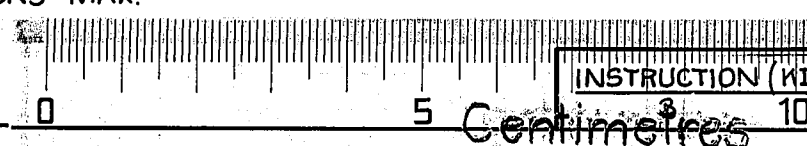
POSN ETH R - S23-51  
BATT. BK BATT. CONN (POSN CCT)-LOe-5e.

RETRACED & METRICATED	(154590)	4A	12.5.78	RED
FIG.4. D&L LEADS TERMS CORRECTED. DIAGRAM OBSOLETE (66463)	4	5.3.63	BBH	
NOTE 5 & ASSOC <sup>P</sup> WIRING. FIG.3 WAS SHOWN (30580)	3	23.11.54		
EXPLAN. FIG. REVISED.	(7378)	2	8.1.54	

AMENDMENT PARTICULARS	ISSUE	DATE	APP <sup>D</sup>
-----------------------	-------	------	------------------

**SLEEVE CONTROL SYSTEM INSTRUCTION CCT.**

REF-G53-13-17 SIZE S 50V H



N.Z.P.O.	15	DRAWN	CHECKED	WIRING	CIRCUIT
				20	

GBW 12820 25 30