

FIG. IA
M.A.R.

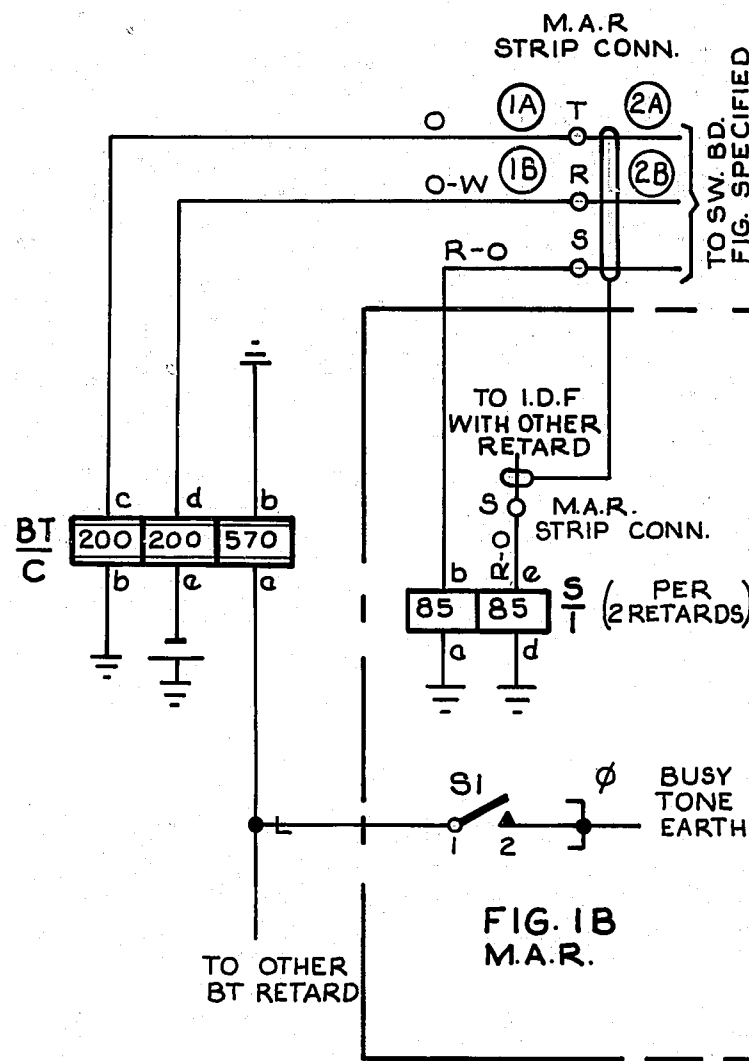


FIG. IB
M.A.R.

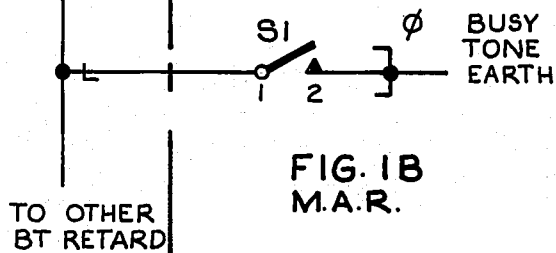


FIG. IC SW. BD.

I.D.F. NOTE 4 JACK CABLED DIRECT TO I.D.F.

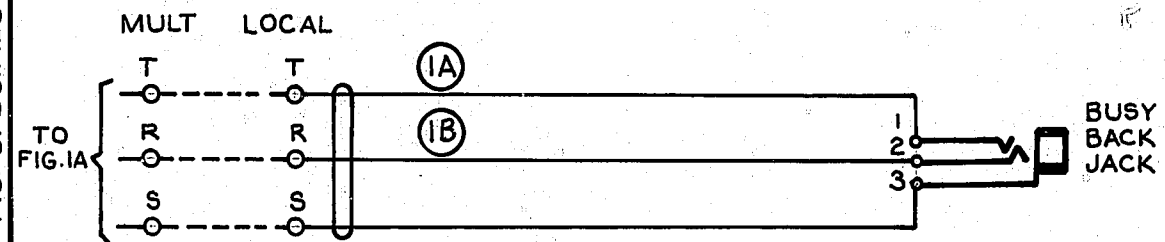


FIG. ID SW. BD.

I.D.F. NOTE 4 JACK CABLED VIA CONCN. TERMS. TO I.D.F.

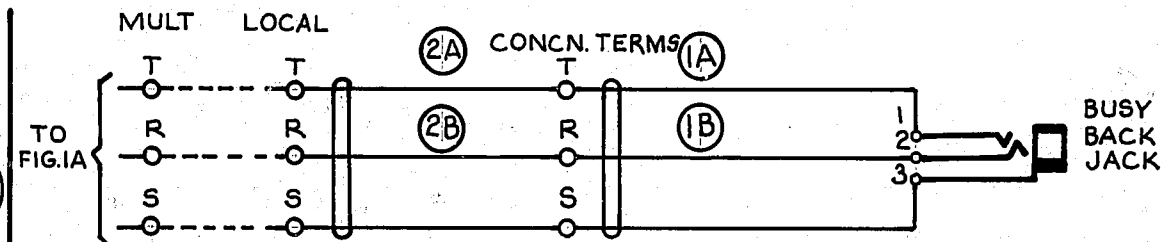


FIG. IE SW. BD.

I.D.F. NOTE 4 JACK WIRED TO LOCAL TAGS & CABLED TO I.D.F. VIA CONCN. TERMS.

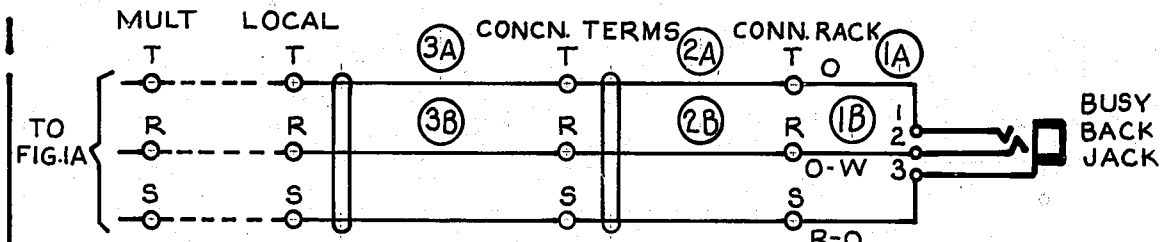
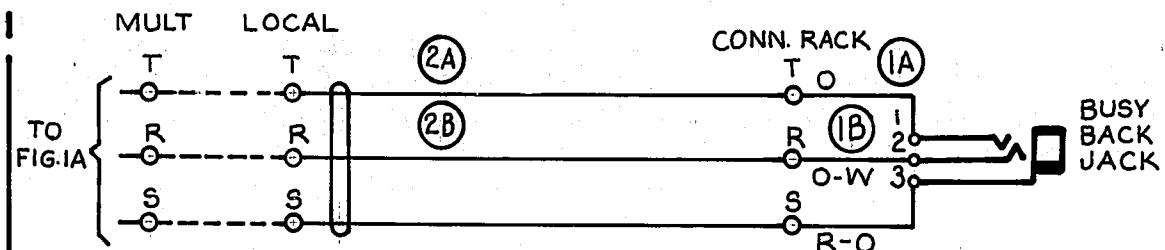


FIG. IF SW. BD.

I.D.F. NOTE 4 JACK WIRED TO LOCAL TAG & CABLED TO I.D.F.



BATT. BK. 0.9mm FUSE (3B) 1BTa-3BTa-5BTa-7BTa-9BTa-2BTa-4BTa-6BTa-8BTa-10BTa
 ETH. R. 0.9mm ETH BAR (3A) 1BTb-1Sa-1Sd-3BTb-5BTb-3Sa-3Sd-7BTb-9BTb-5Sa-5Sd-2BTb-2Sa-2Sd-4BTb-6BTb-4Sa-4Sd-8BTb-10BTb

NOTES:

1. FUSE :- FIG. IA 1.5A PER 10 CCTS.
2. Ø FOR WIRING SEE GBW 10690
3. ALL WIRING TO BE 0.5mm UNLESS OTHERWISE SPECIFIED.
4. IN SOME EXCHANGES THE MANUAL SWITCHBOARD IS SITUATED IN A BUILDING REMOTE FROM THE AUTO BUILDING. IN SUCH CASES THE CONNECTIONS FROM THE I.D.F. LOCAL (AUTO BUILDING) TO THE SWITCHBOARD ARE MADE VIA MANUAL ROOM FRAME (MANUAL BUILDINGS)

PROOF

2A	28.3.80	A.G.	170/63	RETRACED
2	11.10.63		69313	NOTE 4 ADDED
1			2217	
ISS	DATE	DEL	DC ORDER	CKD APPD
				CHANGE

SLEEVE CONTROL SYSTEM
 BUSY BACK CIRCUIT
 WITH BALANCED TONE

50V H	<input type="checkbox"/> SLOW RELEASE	<input checked="" type="checkbox"/> SLOW OPERATE
DRN:T. EQPT	CKD	ORIGIN:T. EQPT.
TCD:A.G	APPD	STANDARD: ATW 22001
NZPO ENGINEER-IN-CHIEF, WELLINGTON		
	SHT 10F1	GBW 12750
	SIZE A3	

UD 235

Centimetres

