

0
5 Centimetres
10
15
20
25
30

FIG 1

MANUAL BOARD

SHOWN FOR EXPLANATORY PURPOSES ONLY

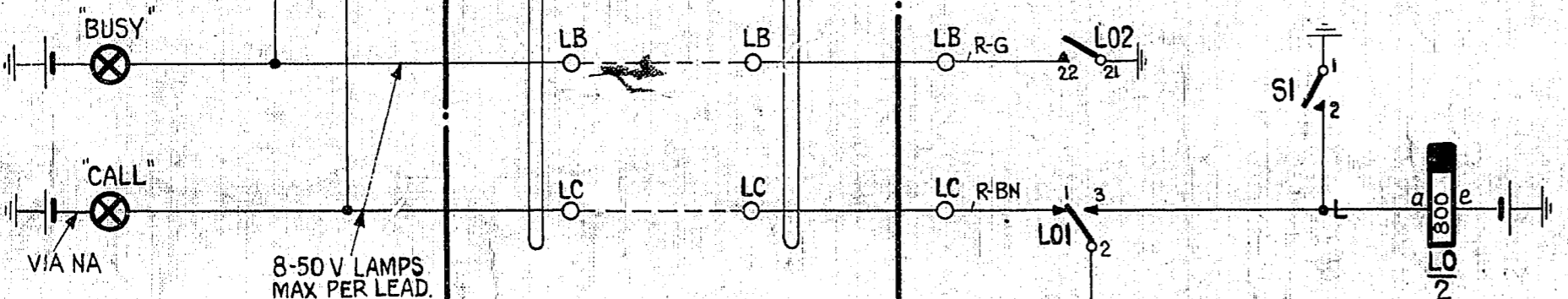
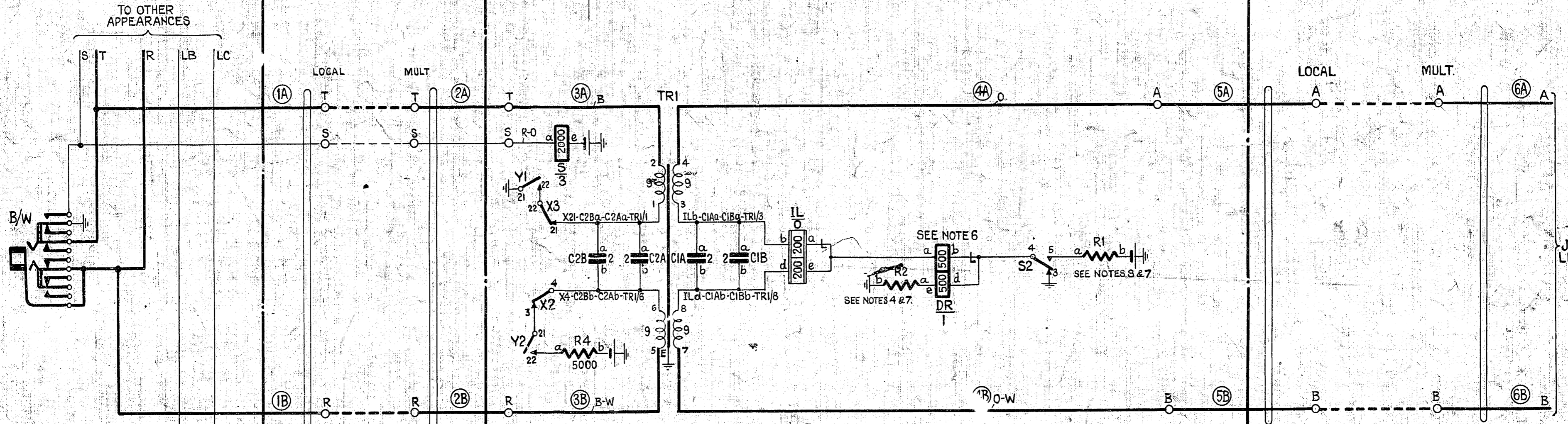
I.D.F.

SEE NOTE 5

FIG 2 M.A.R.

I.D.F.

SEE NOTE 5



BATT. BK FUSE-R1b-R3b-R4b-Ye-L0e-Se
20 S.W.G.

ETHR. ETH. BAR TRIE-DR2-Xa-X1-R2b
20 S.W.G. SI-S3-L02I-Y2I

- NOTES**
- FUSING FUSE RC 1.5A PER C.CT. FIG 2.
 - ALL WIRES UNLESS OTHERWISE SPECIFIED SHALL BE 23 SWG LOCAL PLATE WIRING TO BE 23 SWG OR 25 SWG.
 - VALUE OF RESISTANCE R1 TO BE SUCH AS TO LIMIT LINE CURRENT TO 20ma. MAX.
 - VALUE OF RESISTANCE R2 TO BE SUCH AS TO ENSURE EQUAL CURRENT IN WINDINGS OF RELAY DR WHEN CALLING CONDITION IS ESTABLISHED.
 - WHEN I.D.F. IS NOT PROVIDED CABLE DIRECT FROM M.A.R. TO M.D.F. & TO MANUAL BOARD.
 - DR IS A DIFFERENTIALLY CONNECTED RELAY.
 - RESISTORS R1 & R2 ARE PROVIDED BY THE DEPARTMENT, FOR MOUNTING ARRANGEMENTS SEE C.R.D.S.

<input type="checkbox"/>	SLOW RELEASE	<input checked="" type="checkbox"/>	SLOW OPERATE
B/W JUNCTION DIFFERENTIAL SIGNALLING TERMINATION AT MAGNETO EXCHANGE.			
AMENDMENT PARTICULARS		ISSUE DATE	APPD
		(42416) 1	11.9.55 C.G.H.
NZ.P.O.		SIZE M	50V C
GBW.12630			