

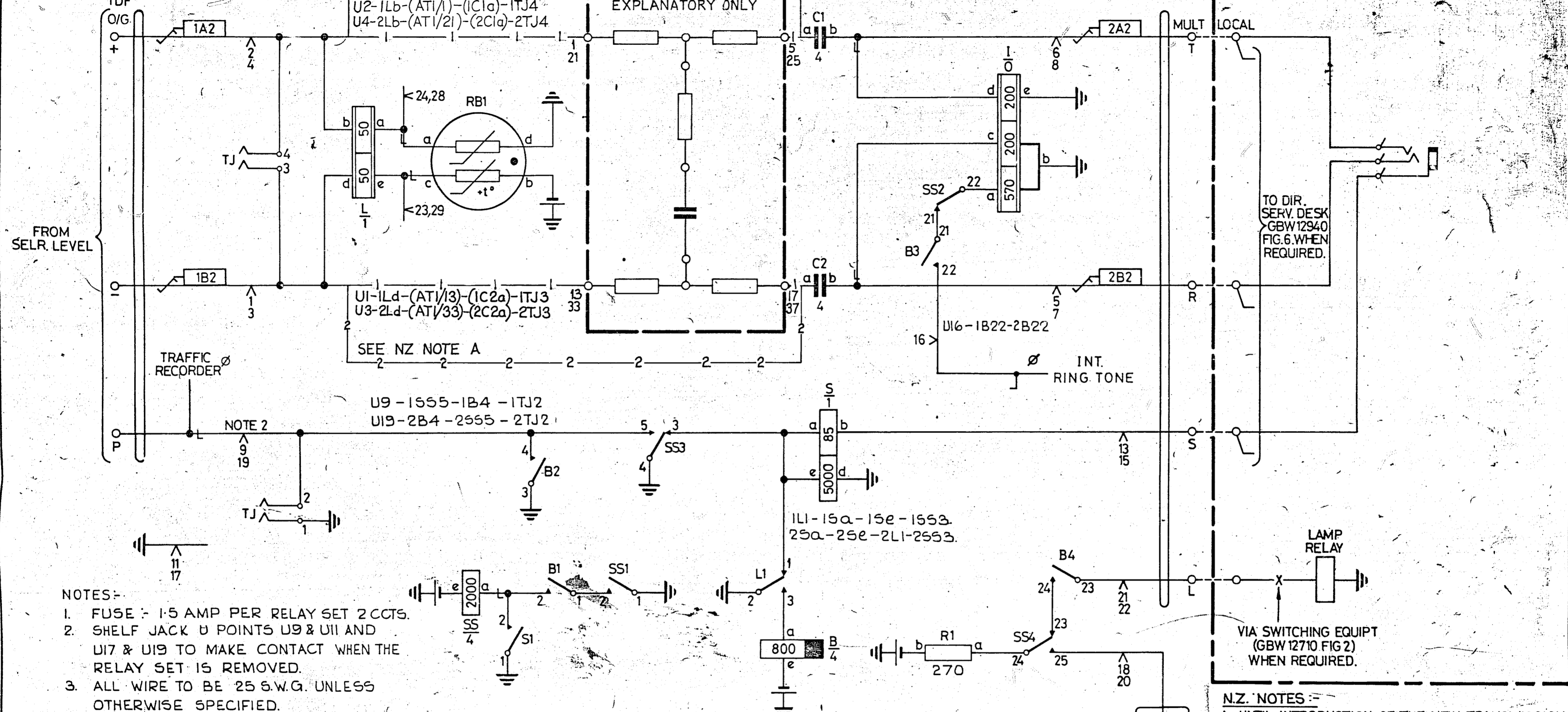
GBW 12571

IDF
MULT OR LOCAL OR
TDF

SEE NZ NOTE A

GBW 20200 OR EQUIV. AT1
FIG. 2
2dB PAD
EXPLANATORY ONLY

MANUAL BOARD OR DIRECTORY SERVICE
DESK (EXPLANATORY ONLY)



NOTES:-

1. FUSE :- 1.5 AMP PER RELAY SET 2 CCTS.
2. SHELF JACK 0 POINTS U9 & U11 AND U17 & U19 TO MAKE CONTACT WHEN THE RELAY SET IS REMOVED.
3. ALL WIRE TO BE 25 S.W.G. UNLESS OTHERWISE SPECIFIED.
4. Ø FOR WIRING SEE GBW10640 OR EQUIVALENT.

N.Z. NOTES :-

- A. UNTIL INTRODUCTION OF THE NEW TRANSMISSION PLAN, REMOVE WIRING SHOWN -1-1-1- AND ADD WIRING SHOWN -2-2-2-

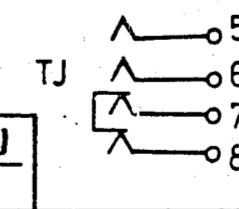
FOR OBSERVATION PURPOSES AS REQD.

BATT. V U12-1Rb1b-2Rb1b-2Be-2S5e-1S5e-1Be-1R1b-2R1b.

ETH. R U11-1L2-1Ib-1Ie-1Sd-1S1-2Sd-2S1-2Ib-2Ie-2L2-2B3-2S1-2S4-1S1-1S4-1B3-1Rb1d-2Rb1d-1TJ1-2TJ1.

BATT V 22 S.W.G. FUSE \swarrow 3B2 U12

ETH. R 22 S.W.G. ETH: \swarrow 3A2 U11-U17



DO NOT SCALE

A2	DRN	ENG
A3	TR	APPROVED
	CHK	
	ENG	DEPT
NZ P.O.		

NZ NOTE ADDED				(34349)	1A	21-3-72	B.5-H
AMENDMENT				(34349)	1	21-3-72	B.5-H
				ISS	DATE	APPD	

TOLERANCES UNLESS OTHERWISE STATED ALL DIMENSIONS ARE IN INCHES DIMENSIONS ARE BEFORE FINISHING SYMBOLS TO BSS 308			
FRAC DIMS	DEC DIMS	STR TOL	WIDE
ANGLES	SQ TOL	PAR TOL	WIDE
		CONC TOL	DIA
HOLE DIA	POSN TOL	DIA	
SYMMETRY TOLERANCE OF THE DIMENSION ABOUT THE ϕ IS EQUALLY DIVIDED			

SELECTOR LEVEL RELAY SET
SLEEVE CONTROL MANUAL BOARD
2000 TYPE

REF:-	50V S
SIZE M	
GBW12571	

