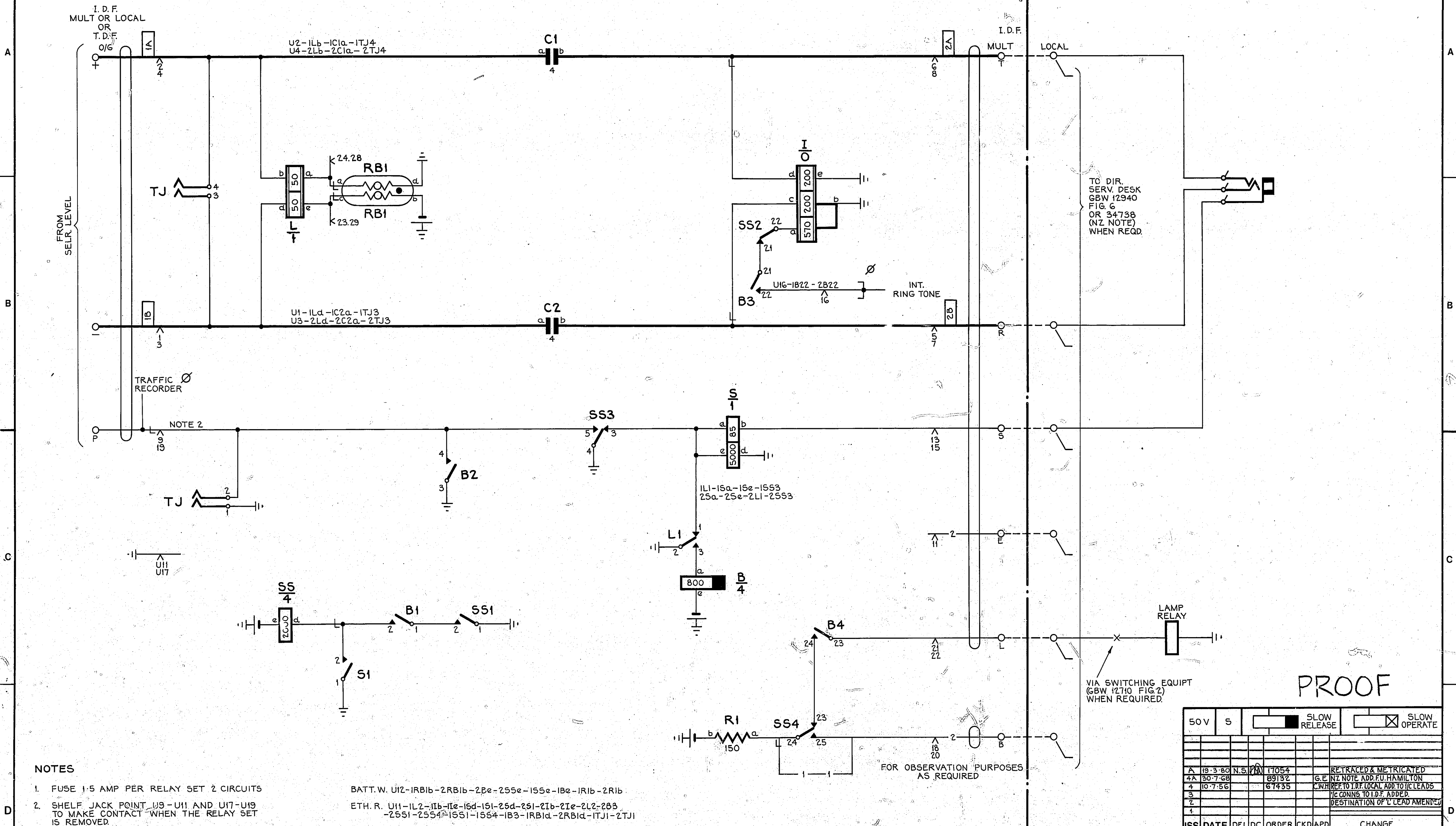


MANUAL BOARD OR DIRECTORY SERVICE DESK
EXPLANATORY ONLY



- NOTES**
1. FUSE 1.5 AMP PER RELAY SET 2 CIRCUITS
 2. SHELF JACK POINT U9-U11 AND U17-U19 TO MAKE CONTACT WHEN THE RELAY SET IS REMOVED.
 3. Ø FOR WIRING SEE GBW 10640 OR EQUIVALENT.

N.Z. NOTE
WHEN USED IN CONJUNCTION WITH N.Z. 34738 PROVIDE STRAP—1— AND CONN—2—

BATT. W. U12-IRB1b-2RB1b-2B2e-255e-155e-1B2e-IR1b-2R1b.
ETH. R. U11-1L2-1Ib-1Ie-15d-151-25d-251-2Ib-2Ie-2L2-2B3-2551-2554-1551-1554-1B3-1RB1d-2RB1d-1TJ1-2TJ1

BATT BK 0.9mm. FUSE $\frac{3B}{4}$ U12
ETH R. 0.9mm. ETH BAR $\frac{3A}{4}$ U11-U17

**SELECTOR LEVEL RELAY SET
(SLEEVE CONTROL MANUAL BOARD)
2000 TYPE**

50V	S	<input type="checkbox"/> SLOW RELEASE	<input checked="" type="checkbox"/> SLOW OPERATE
A	19-3-80	N.S.	17054
4A	30-7-68		89132
4	10-7-56		67435
3			
2			
1			
ISS DATE	DEL DC	ORDER CKD/APD	CHANGE
DRN T-EQPT	CKD	ORIGIN:	T-EQPT
TCD N.S.	APPD	STANDARD:	ATW 22001
N.Z.P.O. ENGINEER-IN-CHIEF WELLINGTON			
	SHT 1 OF 1	GBW12570	
	SIZE A2		

PROOF

VIA SWITCHING EQUIP (GBW 12710 FIG 2) WHEN REQUIRED.

FOR OBSERVATION PURPOSES AS REQUIRED

UD 236

