

FIG.1A.

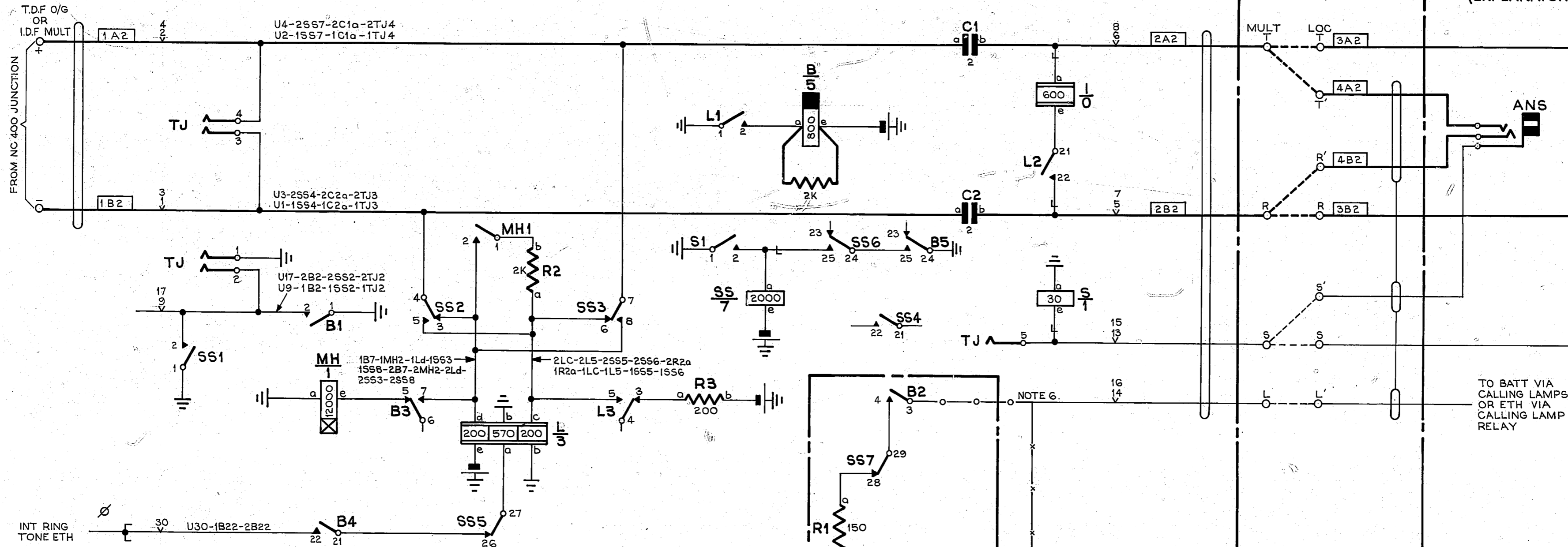


FIG.2.
I.D.F.

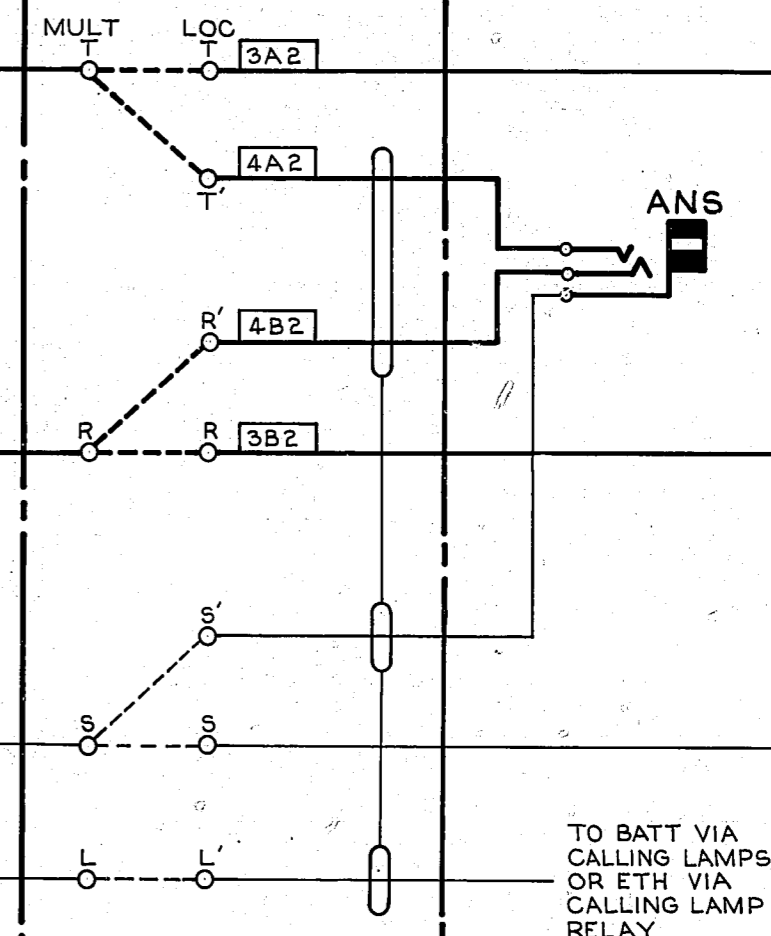
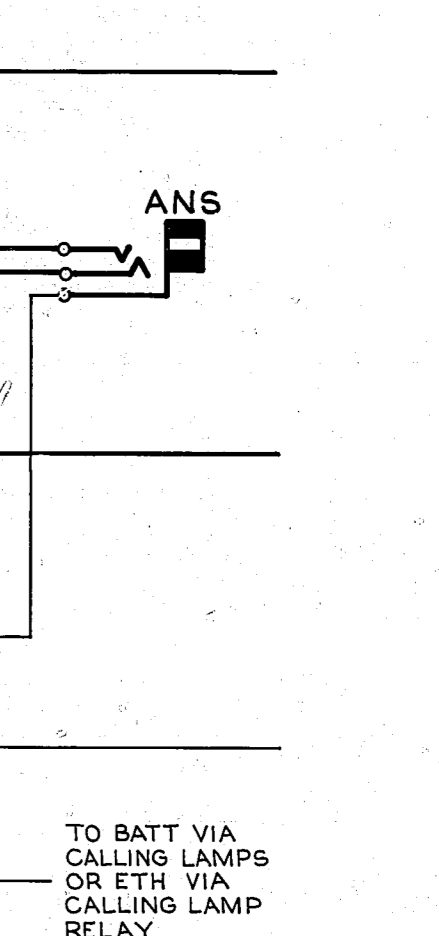


FIG.3.
MANUAL BOARD
(EXPLANATORY ONLY)

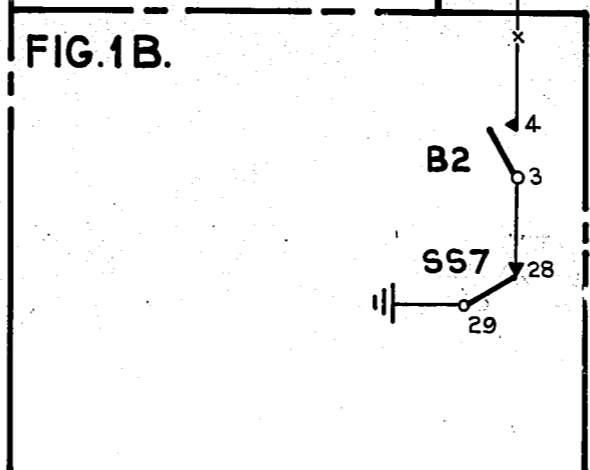


NOTES:

1. FUSING 1.5A PER RELAY SET (FIG 1A&1B OR FIG 1A&1C)
2. SHELF JACK POINTS U9-U11&U17-U19 MAKE CONTACT WHEN R/S IS REMOVED
3. 2CCTS PER BASE
4. ALL WIRING TO BE 25 SWG UNLESS OTHERWISE SPEC'D.
5. Ø FOR WIRING SEE RACK COMMON SERVICES DIAGRAM GBW 10640 OR EQUIV
6. WHEN BATTERY CONNECTED CALLING LAMPS ARE FITTED, SPECIFY FIG 1A&1B & CONNECTIONS $\times \times \times$
WHEN EARTH CONNECTED CALLING LAMP RELAYS ARE FITTED, SPECIFY FIG 1A&1C & CONNECTIONS $\circ \circ \circ$

BATT BK 22SWG FUSE	5B	U12
ETH.R 22SWG ETH BAR	5A	U19
FIGS. 1A&1C	BATT. W-U12-1R1b-1R3b-1Be-2Be-2Le-2S5e-1Le-1S5e-2R1b-2R3b.	U11
FIGS. 1A&1B	ETH. R-U11-1B24-1B1-1MHa-1Sa-1S1-2B24-2B1-2MHa-2Sa-2S1-2Lb-2L1-2SS1-1Lb-1L1-1SS1-1TJ1-2TJ1	
	BATT W-U12-1R3b-1Be-2Be-2Le-2S5e-1Le-1S5e-2R3b	
	ETH. R-U11-1B24-1B1-1MHa-1Sa-1S1-2B24-2B1-2MHa-2Sa-2S1-2Lb-2L1-2S529-2S51-1Lb-1L1-1S529-1S51-1TJ1-2TJ1	

FIG.1C.



EMERGENCY SERVICE RELAY SET				SIZE M 50V W.	
(FOR JUNCTIONS FROM NC 400 EXCH'S W.E. TYPE TOLL BOARD)					
PREPARED FROM GBW 12490 ISS.5 (68295)	A	2-10-75	AGH		
AMENDMENT PARTICULARS		ISSUE	DATE	APP.	
N.Z.P.O.		DRAWN J.P.	CHKD RAB.	WIRING	CIRCUIT
12490 MOD A.				GBW	