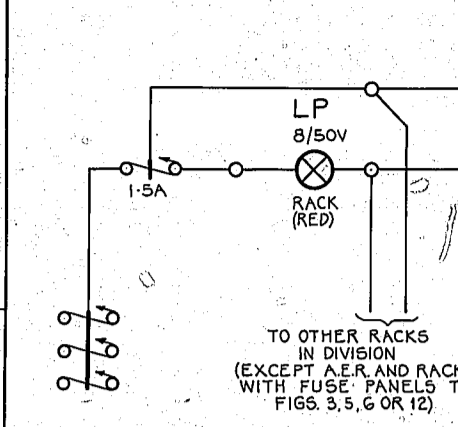
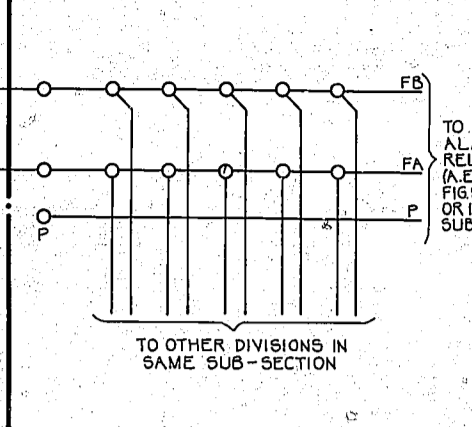


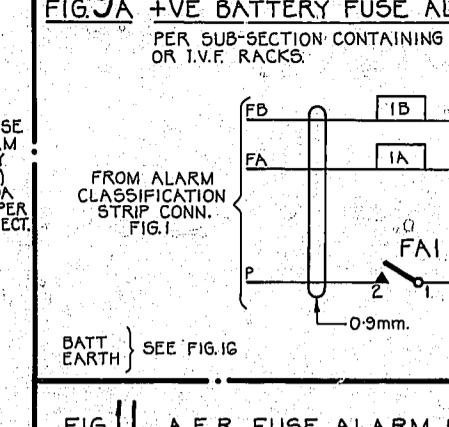
**FIG. 2 RACK FUSE ALARM**  
(NOT FITTED ON A.E.R. OR RACKS WITH FUSE PANELS TO FIGS. 3, 5, 6 OR 12)



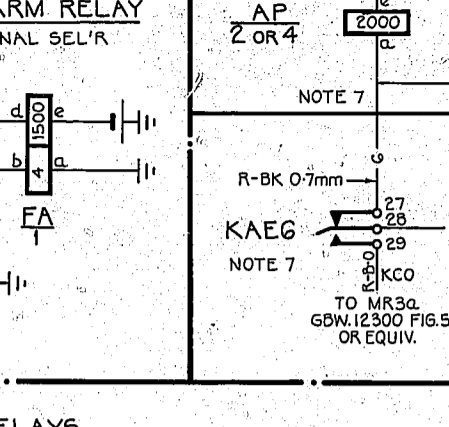
**FIG. 1 ALARM CLASS'N STRIP CONN.**  
(PER SUB-SECTION)



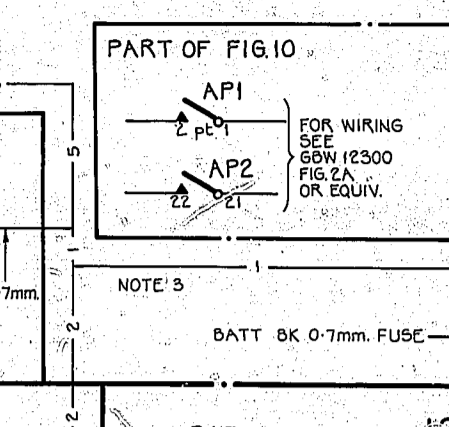
**FIG. 9 -VE BATTERY FUSE ALARM RELAY**  
PER SUB-SECTION (OTHER THAN POWER & THAT CONTAINING A.E.R.) NOTE 3



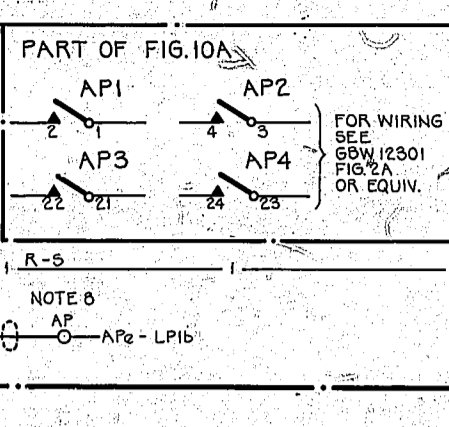
**FIG. 9A +VE BATTERY FUSE ALARM RELAY**  
PER SUB-SECTION CONTAINING FINAL SEL'R OR I.V.F. RACKS



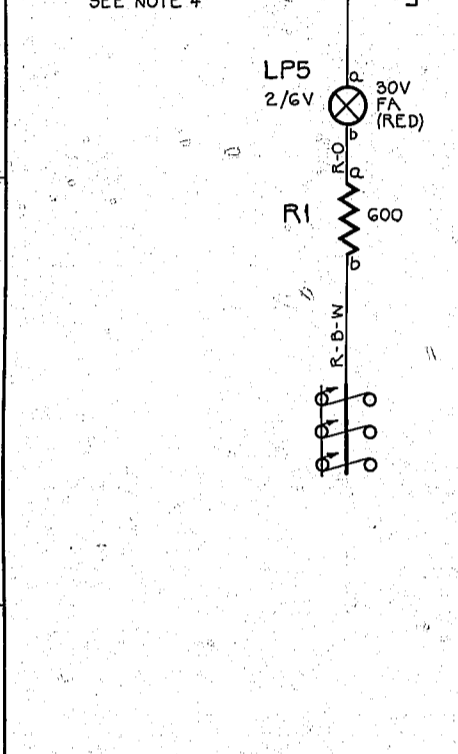
**FIG. 10 AUXILIARY 'AP' RELAY-2 CONTACTS**  
**FIG. 10A AUXILIARY 'AP' RELAY-4 CONTACTS** NOTE 2



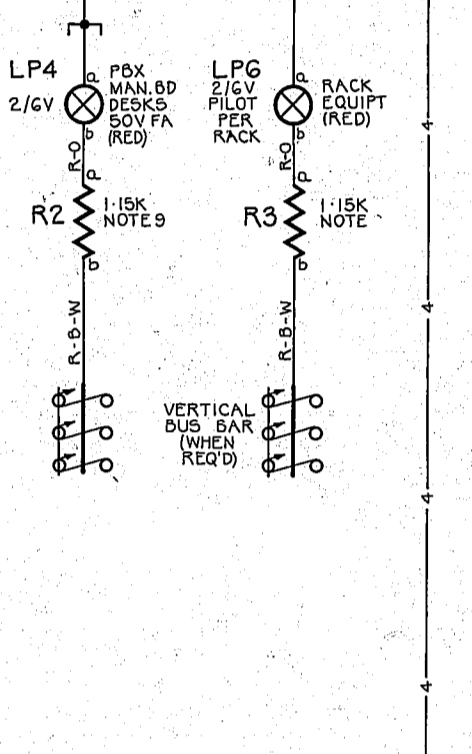
**FIG. 16 FUSE ALARM RELAY**  
SUB-SECTION CONTAINING A.E.R. NOTE 3



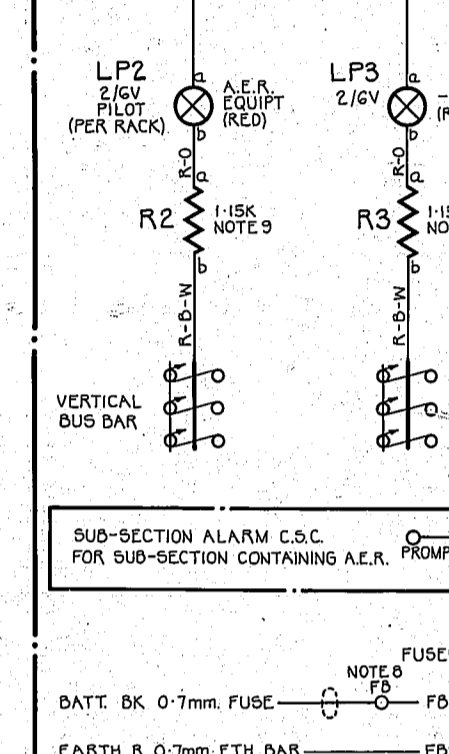
**FIG. 3 AUTO-MANUAL FUSE DISTRIBUTION**  
PER EXCHANGE SEE NOTE 4



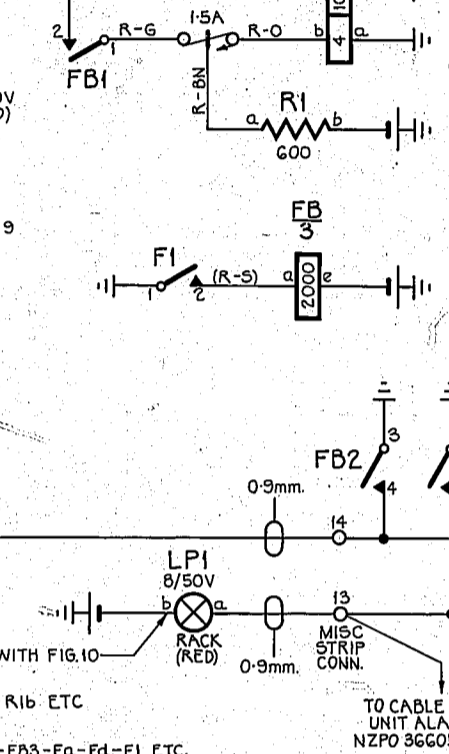
**FIG. 11 A.E.R. FUSE ALARM RELAYS**  
PER EXCHANGE



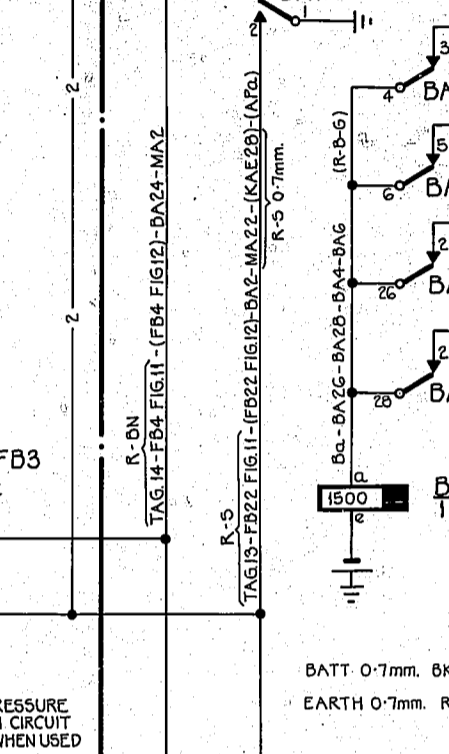
**FIG. 13 RINGING DISTRIBUTOR FUSE ALARM**  
PER EXCHANGE



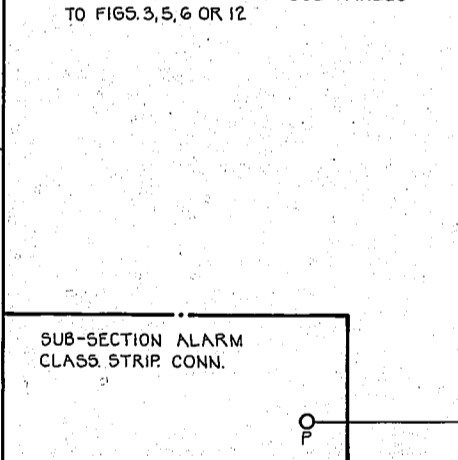
**FIG. 7 GROUP FUSE ALARM**  
NOTE 6



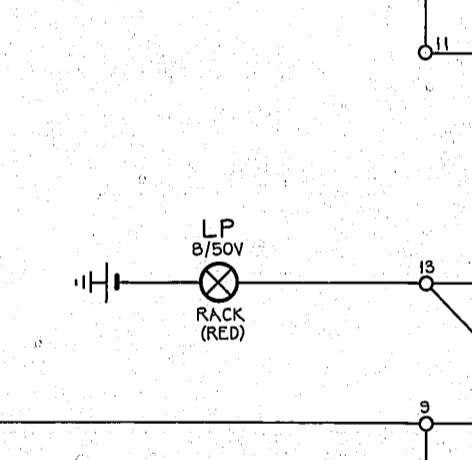
**FIG. 8 AUXILIARY GROUP FUSE PANEL ALARM**  
(FITTED ON A.E.R. DIVISION) PER EXCHANGE NOTE 6



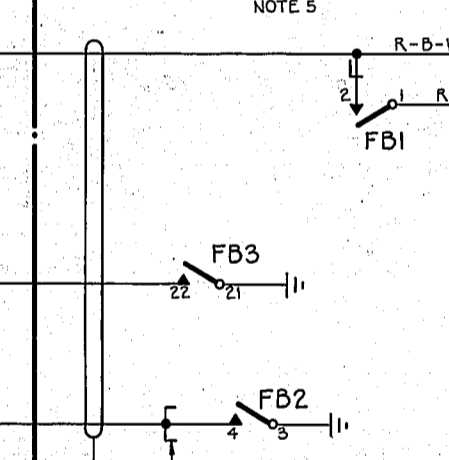
**FIG. 4A FUSE ALARM**  
RACKS FITTED WITH FUSE PANELS TO FIGS. 3, 5, 6 OR 12



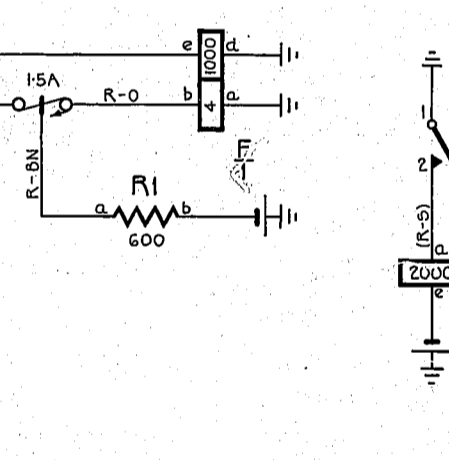
**FIG. 4B FUSE ALARM RELAYS A.E.R.**  
PER RACK (OTHER THAN A.E.R.) WITH FUSE PANELS TO FIGS. 3, 5, 6 OR 12 NOTE 5



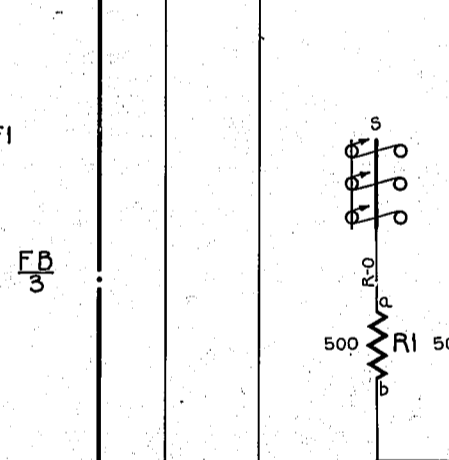
**FIG. 14 S.Z. & METER PULSE DISTRIBUTION FUSE ALARM**  
PER EXCHANGE



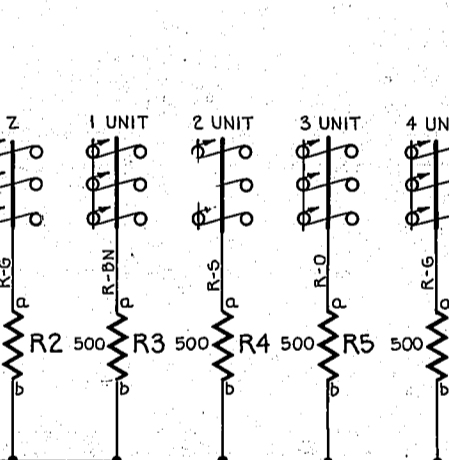
**FIG. 12 POSITIVE BATTERY DIST'N FUSE ALARM**  
(PER EXCHANGE) NOTE 4



**FIG. 15 FUSE ALARM RELAYS**  
(POWER SECTION)



**FIG. 12A**  
PER PANEL



- NOTES:**
- FUSING: FIG. 9 - 1.5A PER 10 'FA' RELS. FIG. 10 - 1.5A FIG. 10A - 1.5A FIG. 11 - 1.5A PER 10 'FA' RELS. FIG. 12 - 1.5A PER 10 'FA' RELS. FIG. 13 - 1.5A FIG. 14 - 1.5A FIG. 15 - 1.5A FIG. 16 - 1.5A
  - FIG. 10 IN ASSOCIATION WITH GBW 12300 WAS PROVIDED AT EARLY EXCHANGES FOR NEW WORK SPECIFY FIG. 10A IN ASSOCIATION WITH GBW 12301 OR EQUIV.
  - FOR EXCHANGES USING FIG. 7 & 8 FIT FIG. 16 FOR SUB-SECTION CONTAINING A.E.R. AND WIRE - 1 - TO FIG. 11 IF FIG. 7 & 8 ARE NOT USED FIT FIG. 9 & CONNECT FIG. 10 THUS - 2 -
  - WHEN FIGS. 3 OR 12 ARE PROVIDED ON A.E.R. WIRE - 3 - TO FIG. 11 WHEN FIGS. 3, 5, 6 OR 12 ARE PROVIDED ON RACKS OTHER THAN A.E.R. WIRE - 4 - TO FIG. 4A.
  - FOR WIRING OF FIGS. 2, 4A, 5 & 6 (ALSO FIGS. 3 & 12 WHEN PROVIDED ON RACKS OTHER THAN A.E.R.) SEE RELEVANT COMMON SERVICES DIAGRAM.
  - UNLESS OTHERWISE SPECIFIED ALL WIRING TO BE 0.5mm. WIRING IN FIGS. 7 & 8 AND ALL WIRING TO FUSES TO BE 0.7mm.
  - OTHER CONTACTS OF ALARM EXTENSION KEY ARE SHOWN ON GBW 12300 OR EQUIV. KEY KAE IS NOT FITTED IN WHICH CASE PROVIDE CONNECTIONS SHOWN - 5 - IN LIEU OF THOSE SHOWN - 6 -
  - THESE TERMINALS ONLY PROVIDED WHEN FIGS. 7 & 8 ARE SPECIFIED.
  - ON SOME EARLY EQUIPMENTS THESE RESISTORS WERE 12K OHMS.
  - THIS CIRCUIT MAY BE USED ON EXCHANGE EXTENSION TO COVER THE PROVISION OF ADDITIONAL SUB-SECTIONS.

**PROOF**

|    |    |    |    |    |    |    |    |    |     |
|----|----|----|----|----|----|----|----|----|-----|
| 1  | 2  | 3  | 4  | 5  | 6  | 7  | 8  | 9  | 10  |
| 11 | 12 | 13 | 14 | 15 | 16 | 17 | 18 | 19 | 20  |
| 21 | 22 | 23 | 24 | 25 | 26 | 27 | 28 | 29 | 30  |
| 31 | 32 | 33 | 34 | 35 | 36 | 37 | 38 | 39 | 40  |
| 41 | 42 | 43 | 44 | 45 | 46 | 47 | 48 | 49 | 50  |
| 51 | 52 | 53 | 54 | 55 | 56 | 57 | 58 | 59 | 60  |
| 61 | 62 | 63 | 64 | 65 | 66 | 67 | 68 | 69 | 70  |
| 71 | 72 | 73 | 74 | 75 | 76 | 77 | 78 | 79 | 80  |
| 81 | 82 | 83 | 84 | 85 | 86 | 87 | 88 | 89 | 90  |
| 91 | 92 | 93 | 94 | 95 | 96 | 97 | 98 | 99 | 100 |

**FUSE ALARM ARRANGEMENTS**  
A.M.X.

SUPERSEDED BY GBW 10150. NOTE 10

DRN: T-EQPT CKD ORIGIN: T-EQPT  
TCD: N.S. APPD STANDARD: ATN 22001  
NZPO ENGINEER-IN-CHIEF, WELLINGTON

ISS: DATE DEL DC ORDER CKD APD CHANGE

GBW 12310

