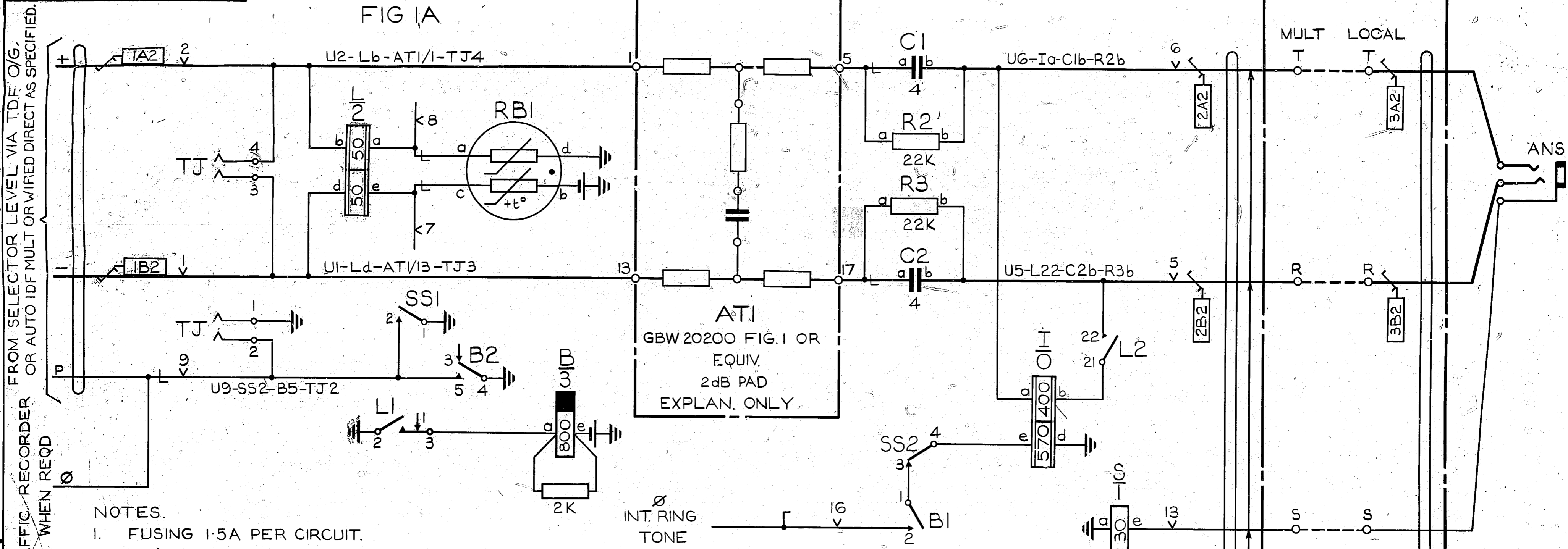


FIG 1A



NOTES.

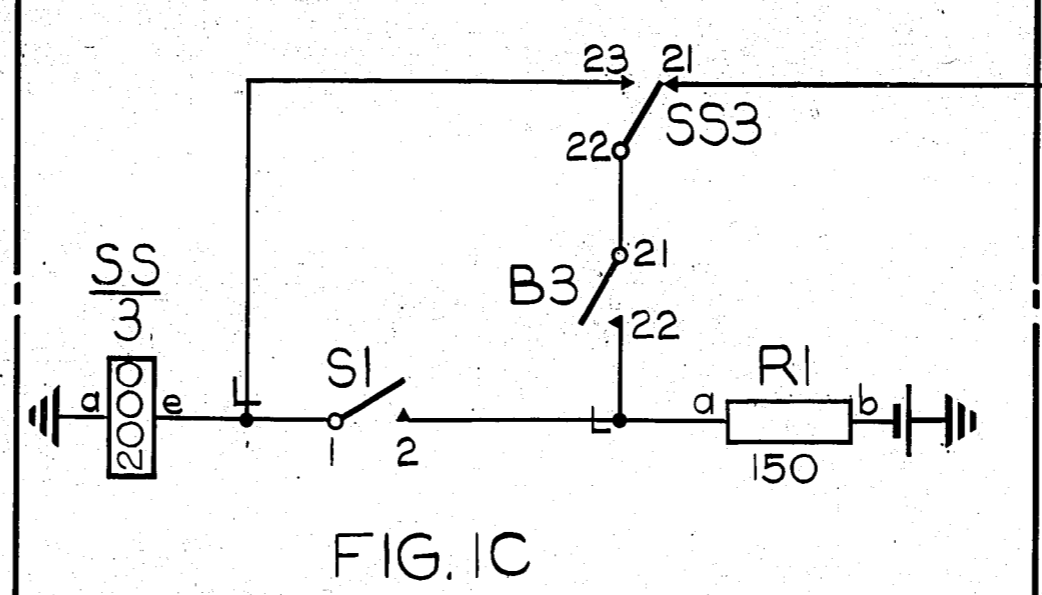
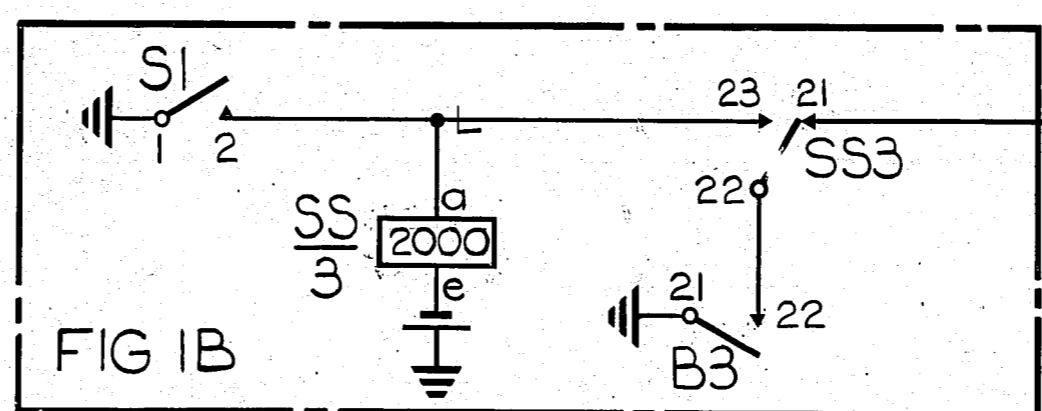
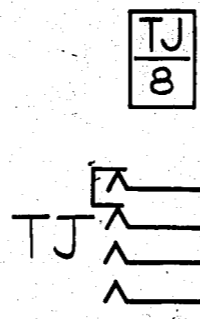
1. FUSING 1.5A PER CIRCUIT.
2. Ø FOR WIRING SEE GBW 10640 OR EQUIV.
3. SHELF JACK U POINTS U9 & U11 MAKE CONTACT WHEN RELAY SET IS REMOVED.
4. WHEN BATTERY CONNECTED CALLING LAMPS ARE FITTED SPECIFY FIGS 1A & 1B AND CONNECTION —1—1— WHEN EARTH CONNECTED LAMP RELAYS ARE FITTED SPECIFY FIGS 1A & 1C AND CONNECTION —2—2—
5. ALL WIRING TO BE 0.5mm UNLESS OTHERWISE SPECIFIED.

BATT. V. 0.7mm FUSE 4B2 U12.

ETH. R. 0.7mm ETH BAR 4A2 U11.

FIG 1A & 1C. { BATT. V. U12-R1b-R1b-Be
ETH. R. U11-L2-Id-Sa-R1d-SSa-SS1-B4-TJ1

FIG 1A & 1B. { BATT. V. U12-R1b-SSe-Be.
ETH. R. U11-L2-Id-Sa-S1-R1d-SS1-B21-B4-TJ1



NOTE 4
VIA AUTO IDF WHEN SPECIFIED

FIG 2 TOLL I.D.F.

FIG 3 MANUAL BOARD (EXPLAN. ONLY)

TO BATT. VIA CALLING LAMPS OR ETH VIA LAMP RELAY.

A2	DRAWN	WRG
	CHKD	CCT.
A3		
NZPO		

TOLERANCES UNLESS OTHERWISE STATED.			
FRACTIONS	DECIMALS	HOLES (DIA.)	HOLES (CENTRES)
+	-	+	-
AMENDMENT			
(99770)	1	17-9-73	BS-H
ISS	DATE	APPD	

SELECTOR LEVEL
RELAY SET LOCAL
MANUAL HOLD
W.E. TOLL BOARD

REFERENCES	50V/W
GBW 2241	