

FIG.2 M.A.R.

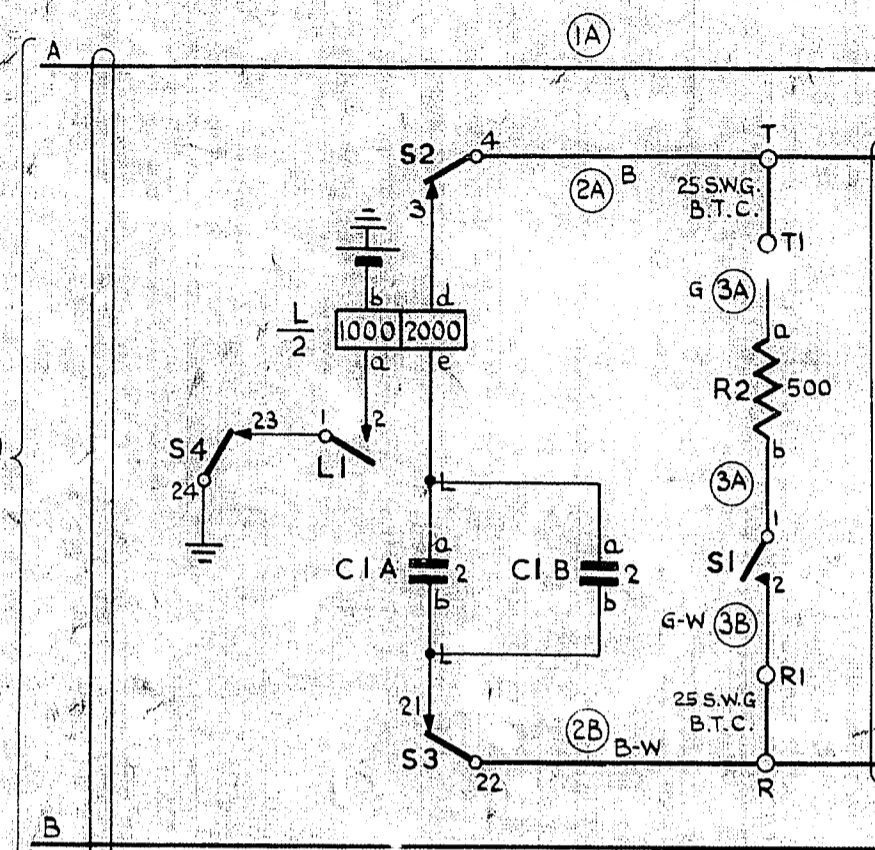


FIG.1 TEST DESK (1ST APPEARANCE)

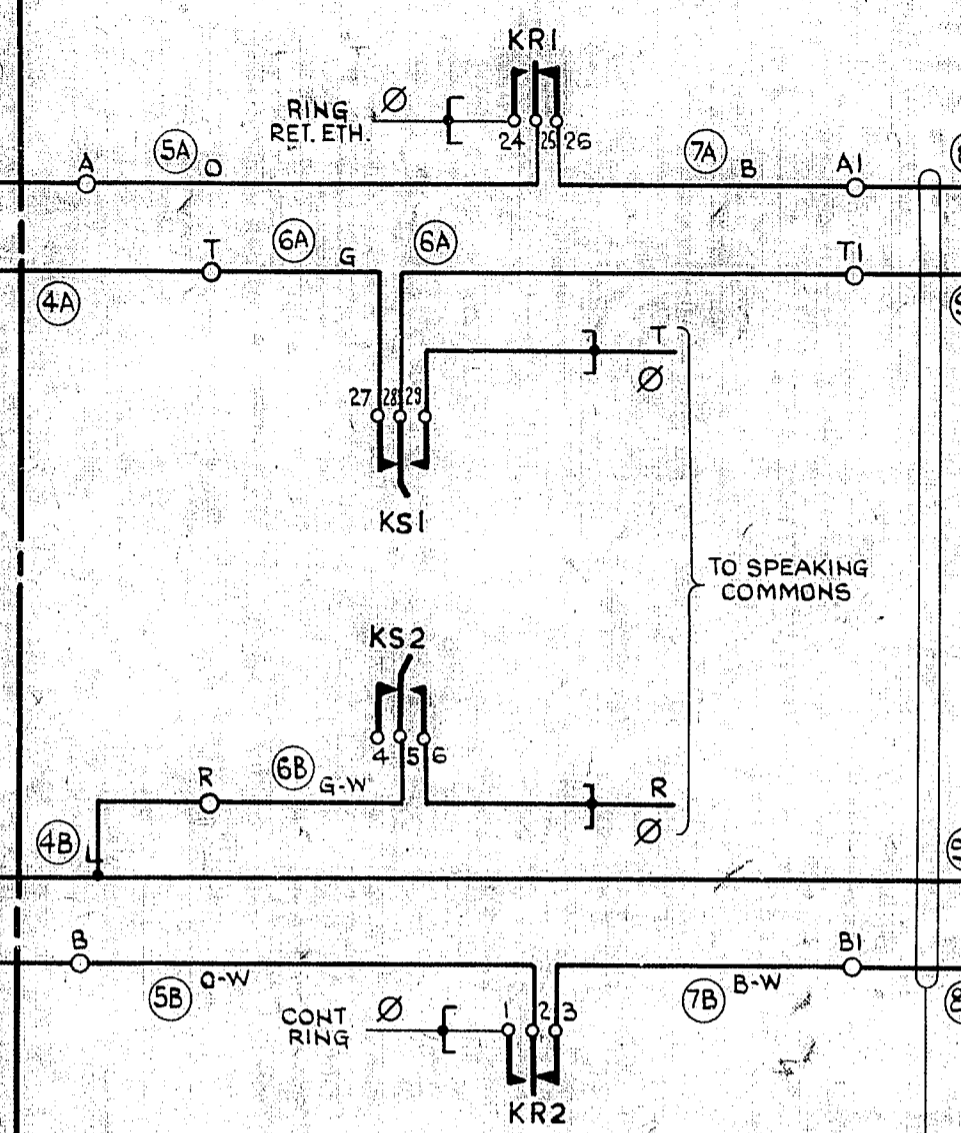
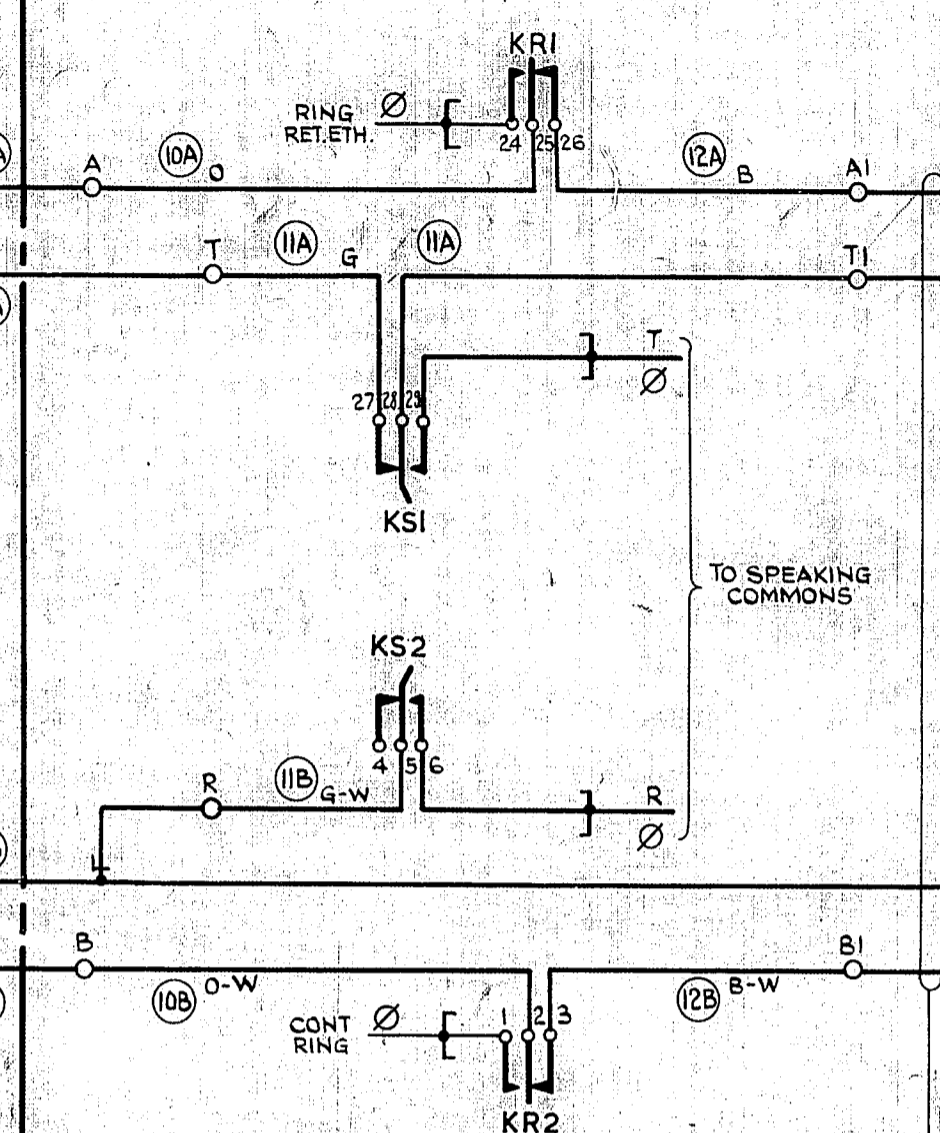
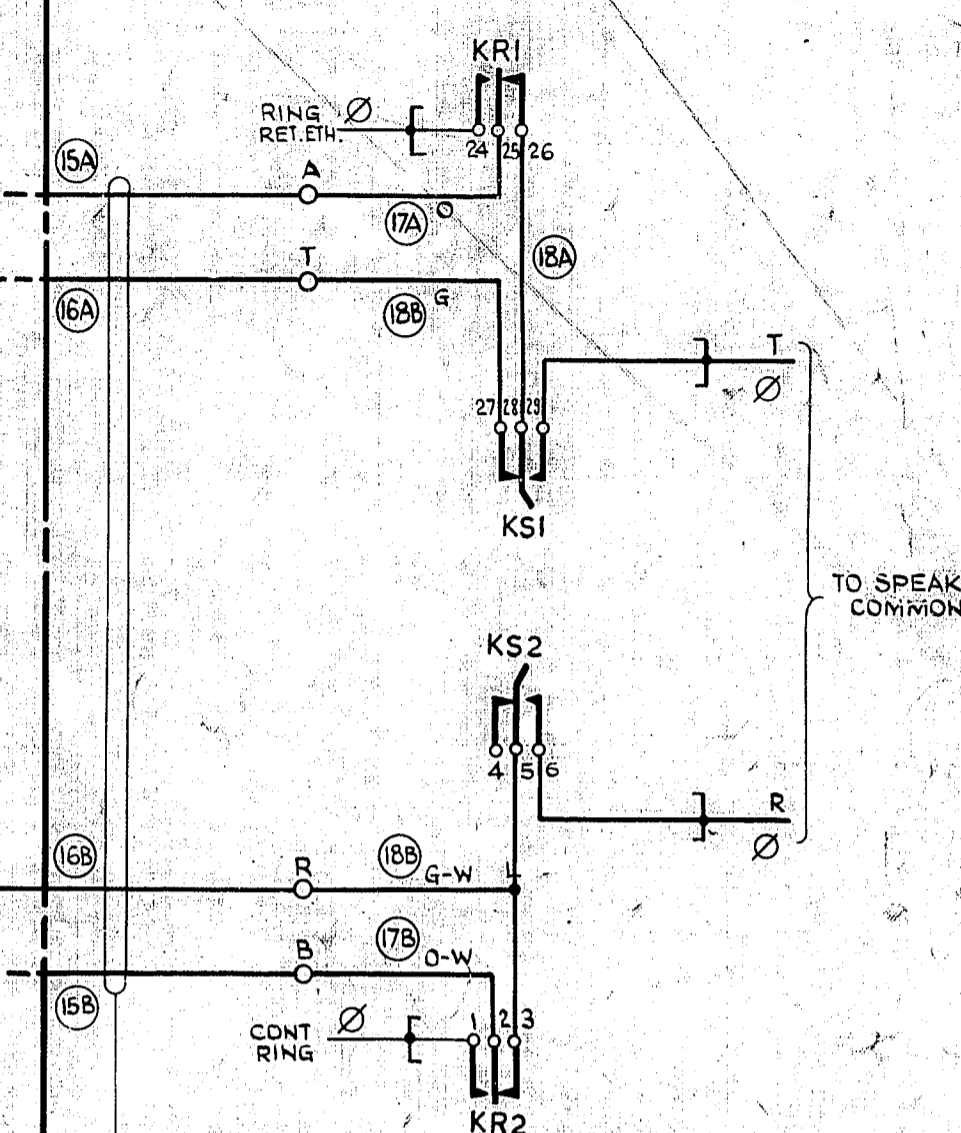


FIG.4 TEST DESK (2ND APPEARANCE)

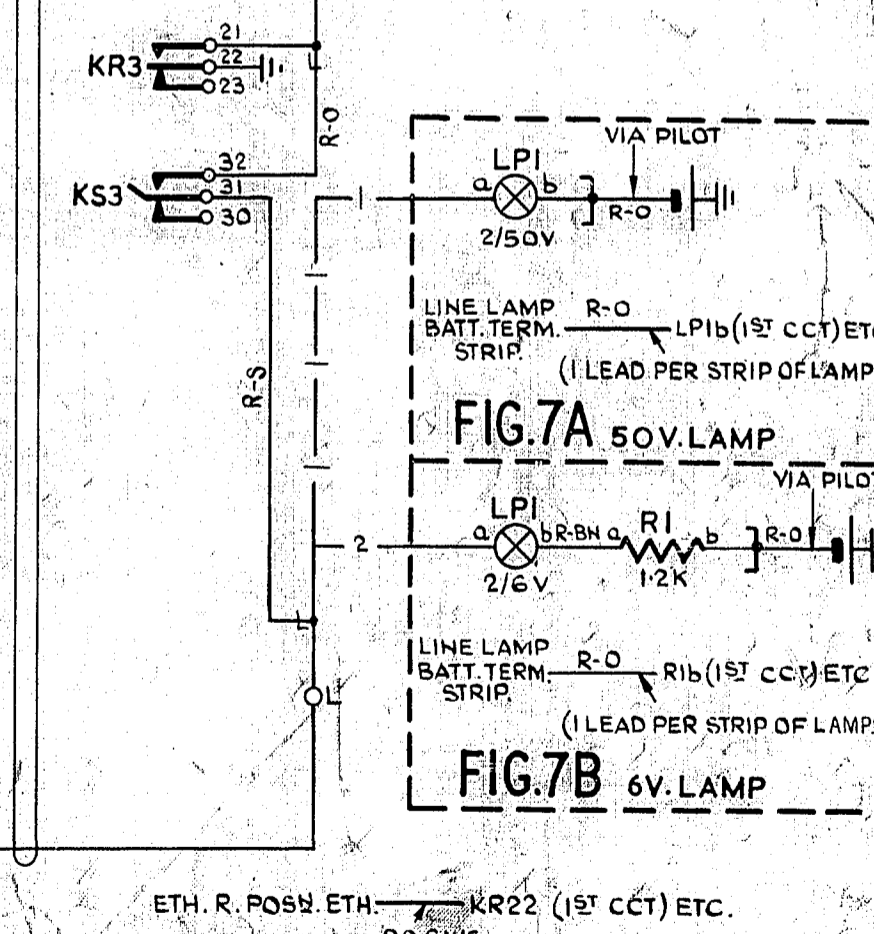
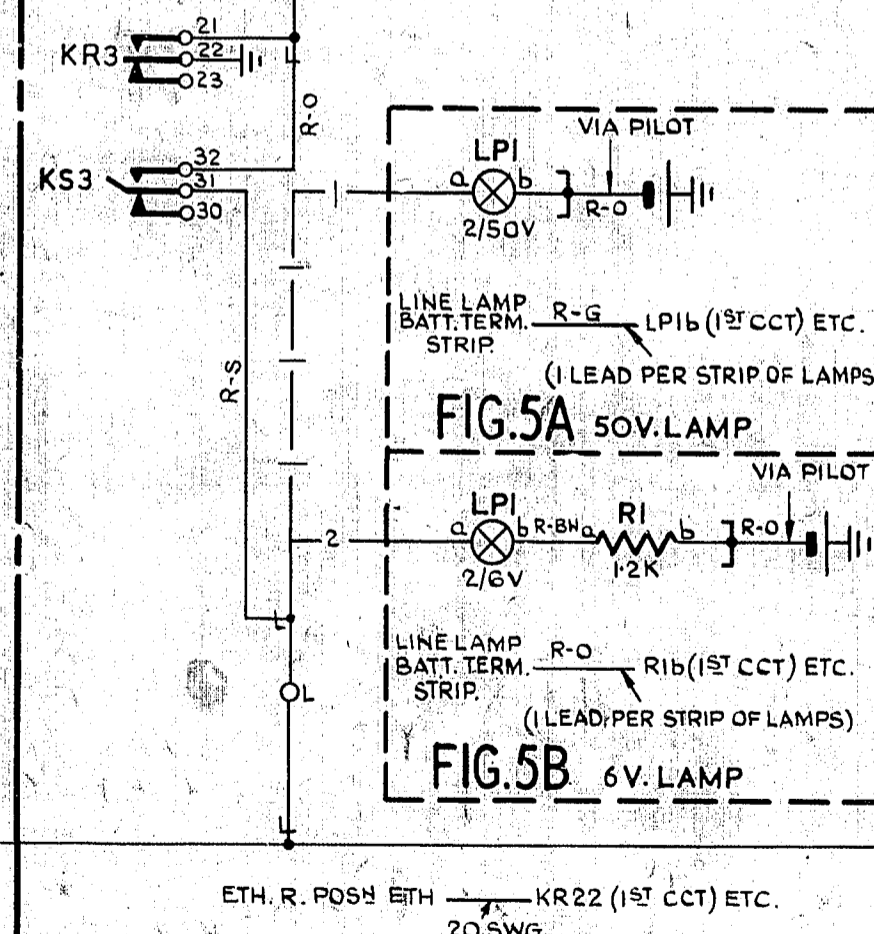
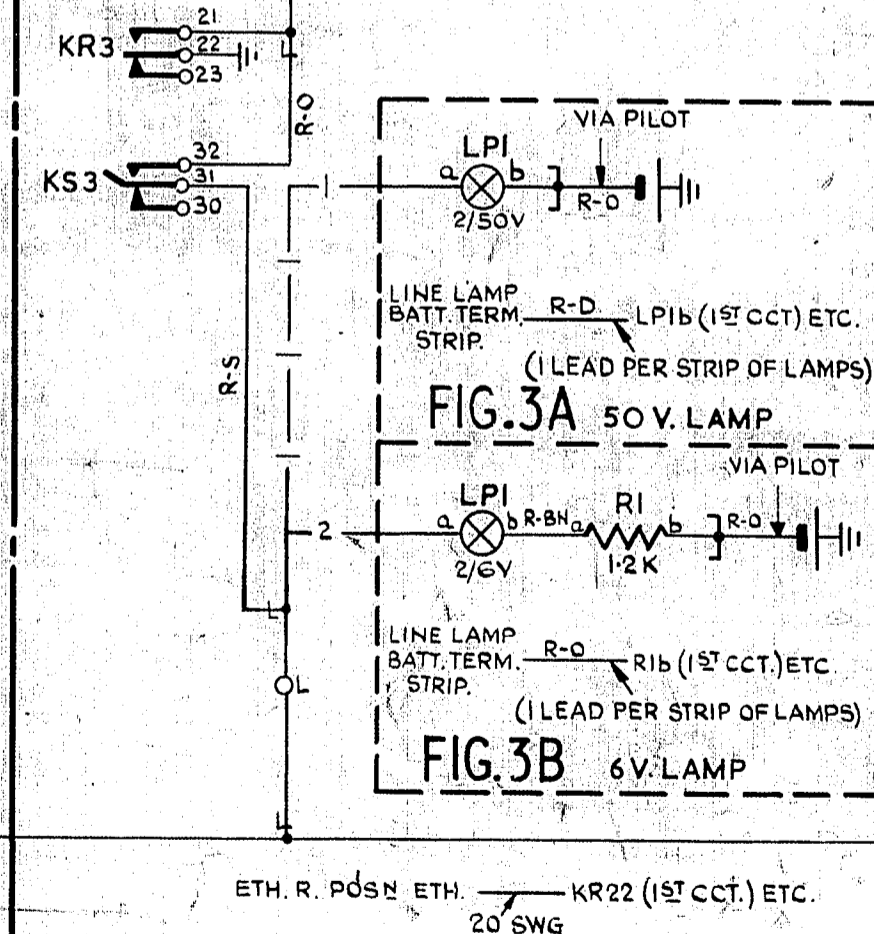


INTERMEDIATE APPEARANCES FIG.6 TEST DESK (LAST APPEARANCE)



| | | | | | |
|-----------|--|--------|---|---------|-----|
| NZPO | REBRANN, FIG.1 AMENDED. | (6648) | 3 | 21-3-63 | DMH |
| | FIGS. 4, 5A, 5B, 6, 7A & 7B ADDED | | 2 | | |
| | 50V LAMP CONDITION ADDED. | | 1 | | |
| | AMENDMENT PARTICULARS | | | | |
| | ISSUE DATE | | | | |
| | APPROVED | | | | |
| GBW 12190 | TEST DESK RING DOWN JUNCTION (KEY ENDED) NEW PLYMOUTH. | | | | |
| | SIZE M | | | | |
| | 30V | | | | |

BATT. BK. FUSE — S_e-L_b
 ETH. R. ETH. BAR — S₂₄-L₂₁
 20 S.W.G.



- NOTES:-
- FUSING: 1.5A. 1 PER CIRCUIT
 - ALL WIRES TO 23 S.W.G. UNLESS OTHERWISE SPECIFIED
 PLATE WIRING TO BE 23 OR 25 S.W.G.
 - Ø FOR WIRING SEE ASSOCIATED COMMON SERVICES DIAGRAM.

SPEAK (KS) + RING (KR)
 3 + 3