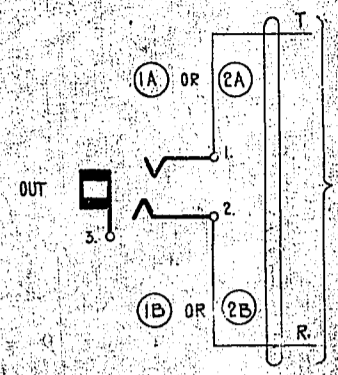
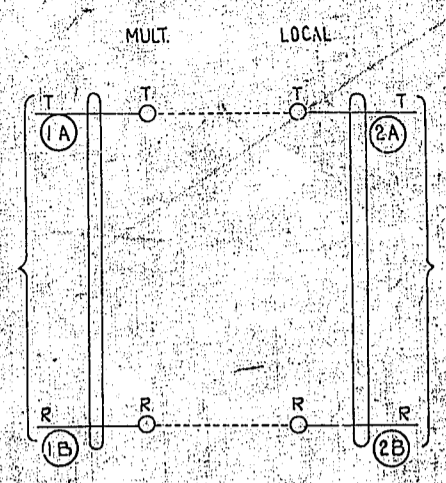


FIG. 1. M.D.F.



TO FIG. 2. DIRECT OR VIA I.D.F.

FIG. 4. I.D.F.



TO FIG. 1

TO FIG. 2

FIG. 2. TEST DESK

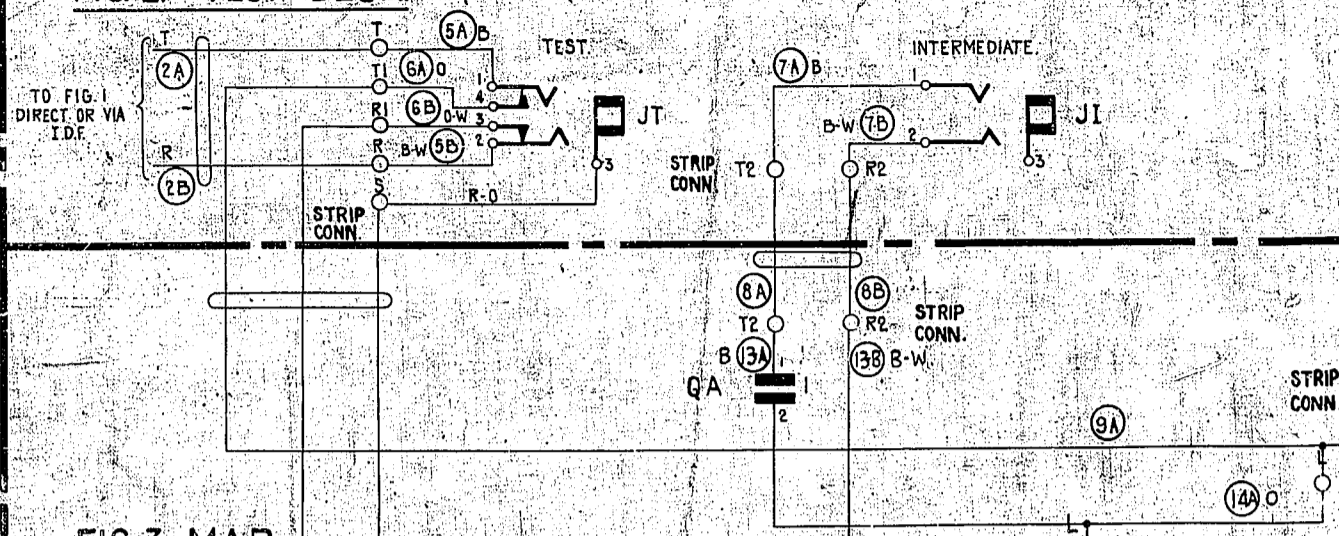
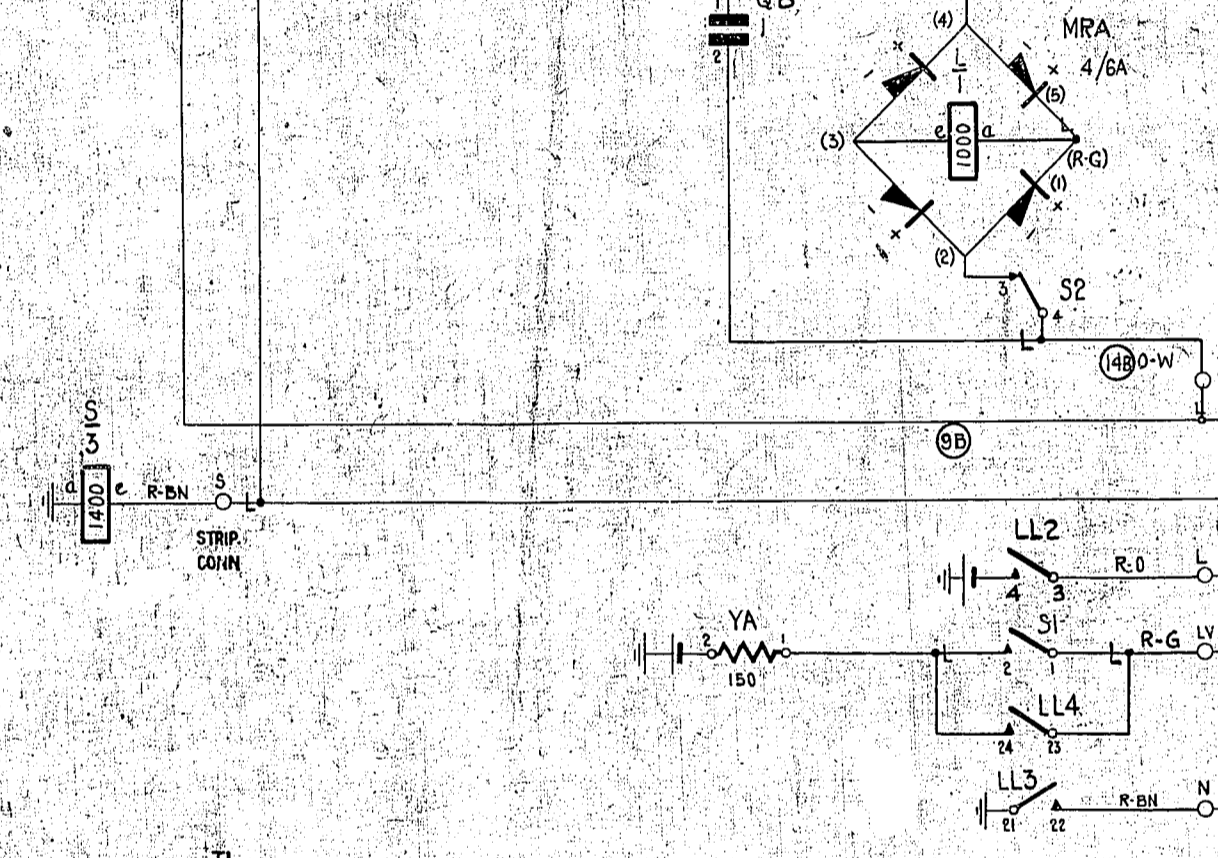
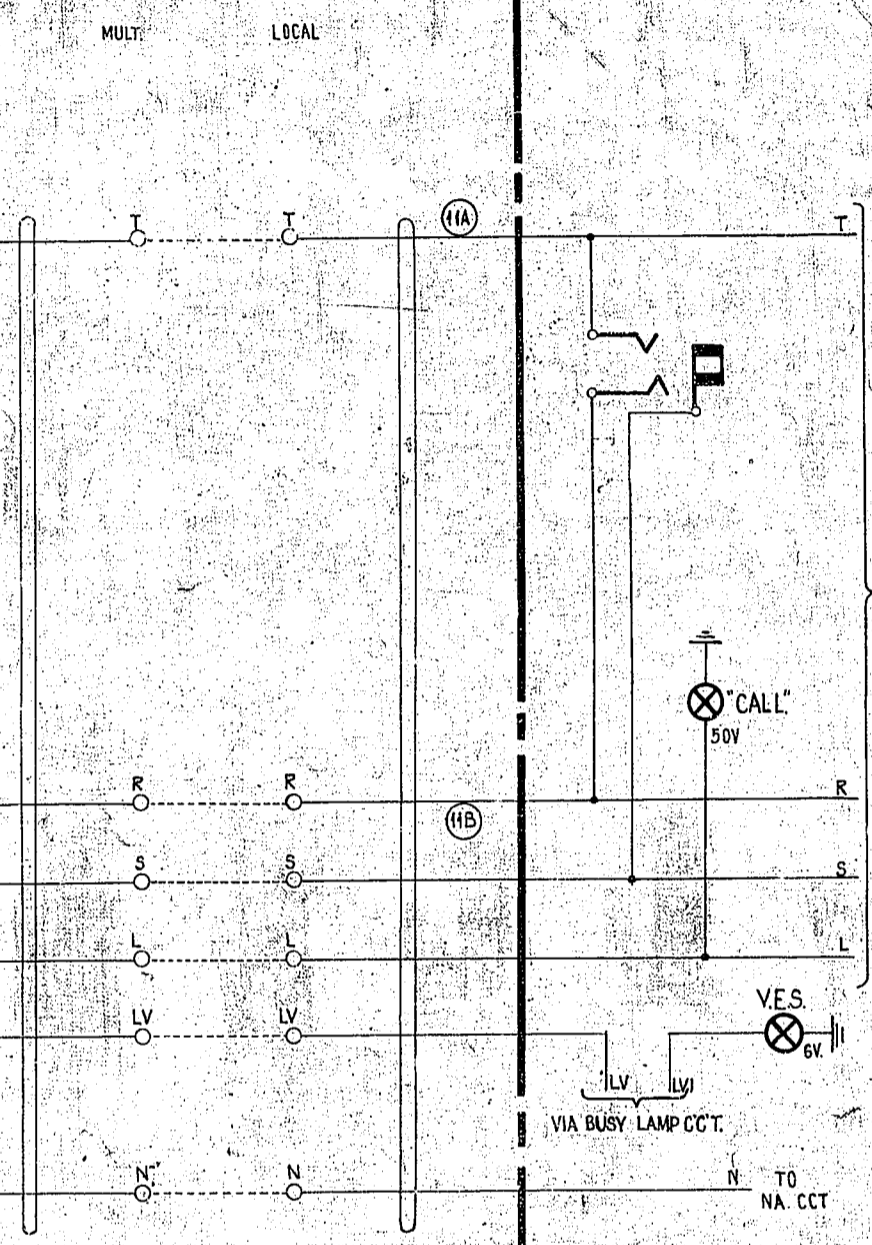


FIG. 3. MAR.



I.D.F. PART OF FIG. 4. TOLL BOARD EXPLANATORY ONLY



OBSOLETE

- NOTES
1. FUSING: - FIG. 3. FUSE=1.5A. (1 PER CCT)
  2. ALL WIRES UNLESS OTHERWISE SPECIFIED SHALL BE 23S.W.G. PLATE STRAPPING TO BE 23 OR 25 S.W.G.
  3. FOR WIRING SEE RELEVANT COMMON SERVICES DIAGRAM.

BATT. BK: 20 S.W.G. FUSE - YA2 - LL2 - LL4  
ETH: R: 20 S.W.G. ETH: BAR - S22 - 5a - LL21 - TAG T1

N.Z.P.O.					
DRG. MADE OBSOLETE (50932)	4	5/12/01			
FIG. 3 MRA WAS DESIGNATED NO. 0 SIGN ADDED (1/2/4)	3	10/6/92	044		
INCOMING CCT. WAS SHOWN.	2				
AMENDMENT PARTICULARS	1				
ISSUE DATE					
APP. REF.					
GBW 11920					
HOSPITAL CIRCUIT FOR SEMI-AUTO RURAL LINES					
SIZE M 50V					