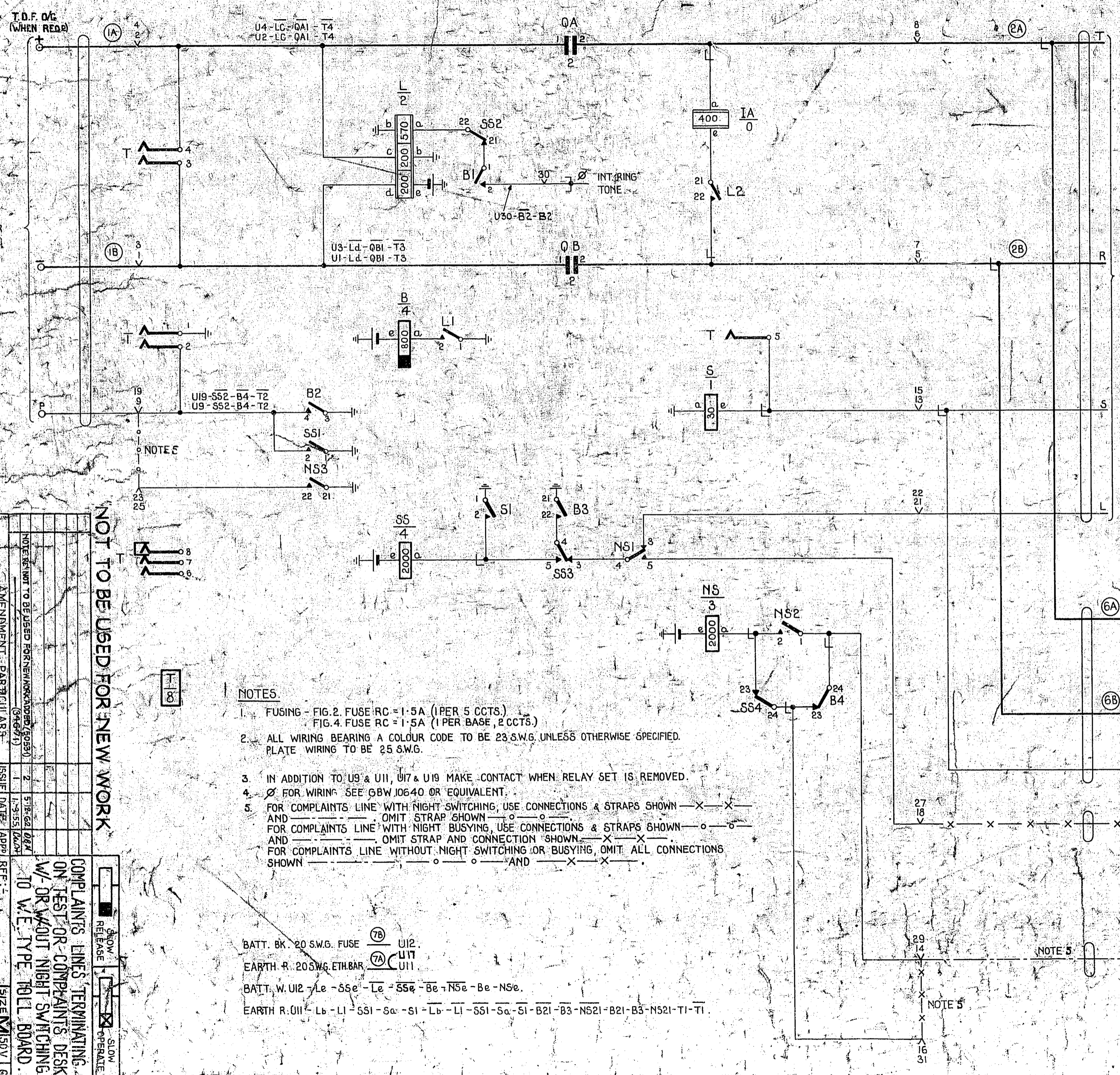


FIG. 4. RELAY SET.



- NOTES**
1. FUSING - FIG. 2. FUSE RC = 1.5A (1 PER 5 CCTS.)
FIG. 4. FUSE RC = 1.5A (1 PER BASE, 2 CCTS.)
 2. ALL WIRING BEARING A COLOUR CODE TO BE 23 S.W.G. UNLESS OTHERWISE SPECIFIED.
PLATE WIRING TO BE 25 S.W.G.
 3. IN ADDITION TO U9 & U11, U17 & U19 MAKE CONTACT WHEN RELAY SET IS REMOVED.
 4. Ø FOR WIRING SEE GBW 10640 OR EQUIVALENT.
 5. FOR COMPLAINTS LINE WITH NIGHT SWITCHING, USE CONNECTIONS & STRAPS SHOWN - X - X -
AND OMIT STRAP SHOWN - O - O -
FOR COMPLAINTS LINE WITH NIGHT BUSYING, USE CONNECTIONS & STRAPS SHOWN - O - O -
AND OMIT STRAP AND CONNECTION SHOWN - X - X -
FOR COMPLAINTS LINE WITHOUT NIGHT SWITCHING OR BUSYING, OMIT ALL CONNECTIONS SHOWN - O - O - AND - X - X -
- BATT. BK. 20 S.W.G. FUSE (7B) U12.
EARTH R. 20 S.W.G. ETH.BAR. (7A) U17
BATT. W. U12 - L_e - 55e - L_e - 55e - B_e - N5e - B_e - N5e.
EARTH R. U11 - L_b - L1 - 551 - 5a - 51 - L_b - L1 - 551 - 5a - 51 - B21 - B3 - N521 - B21 - B3 - N521 - T1 - T1.

FIG. 1. TEST DESK. (EXPLANATORY ONLY.)

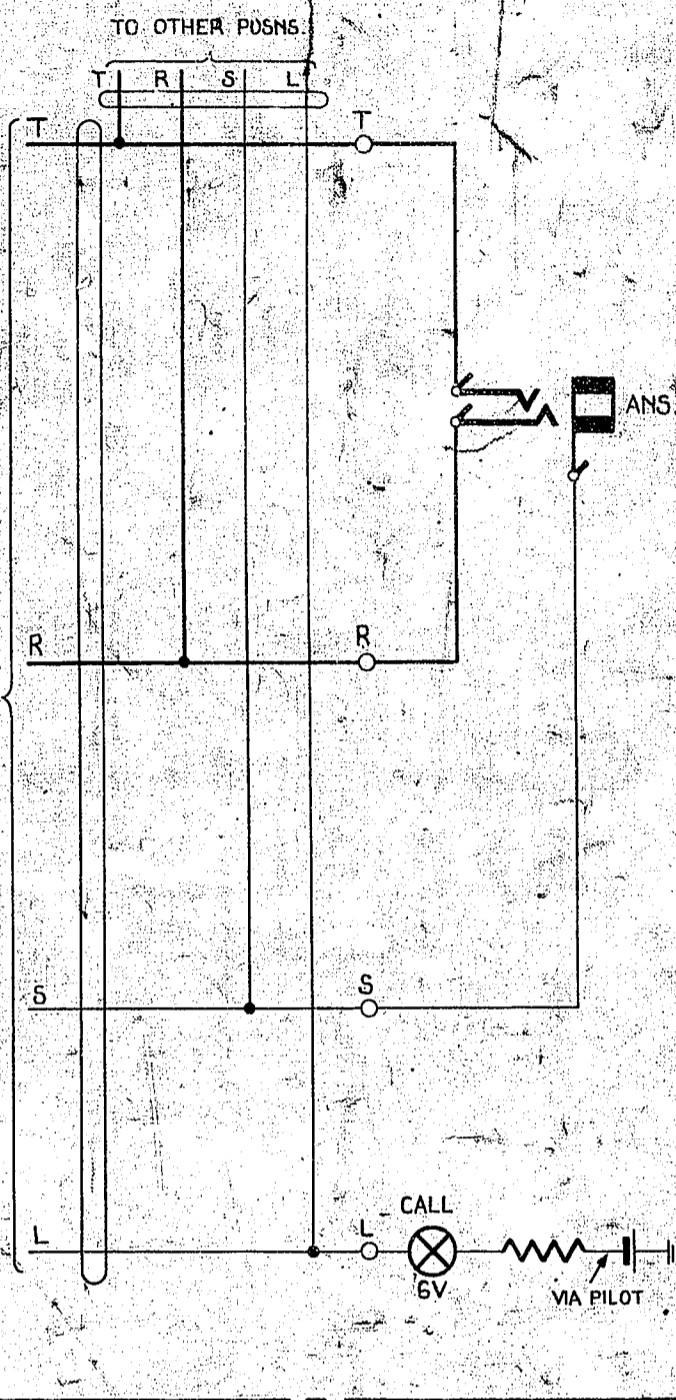


FIG. 2. COMPLAINTS DESK.

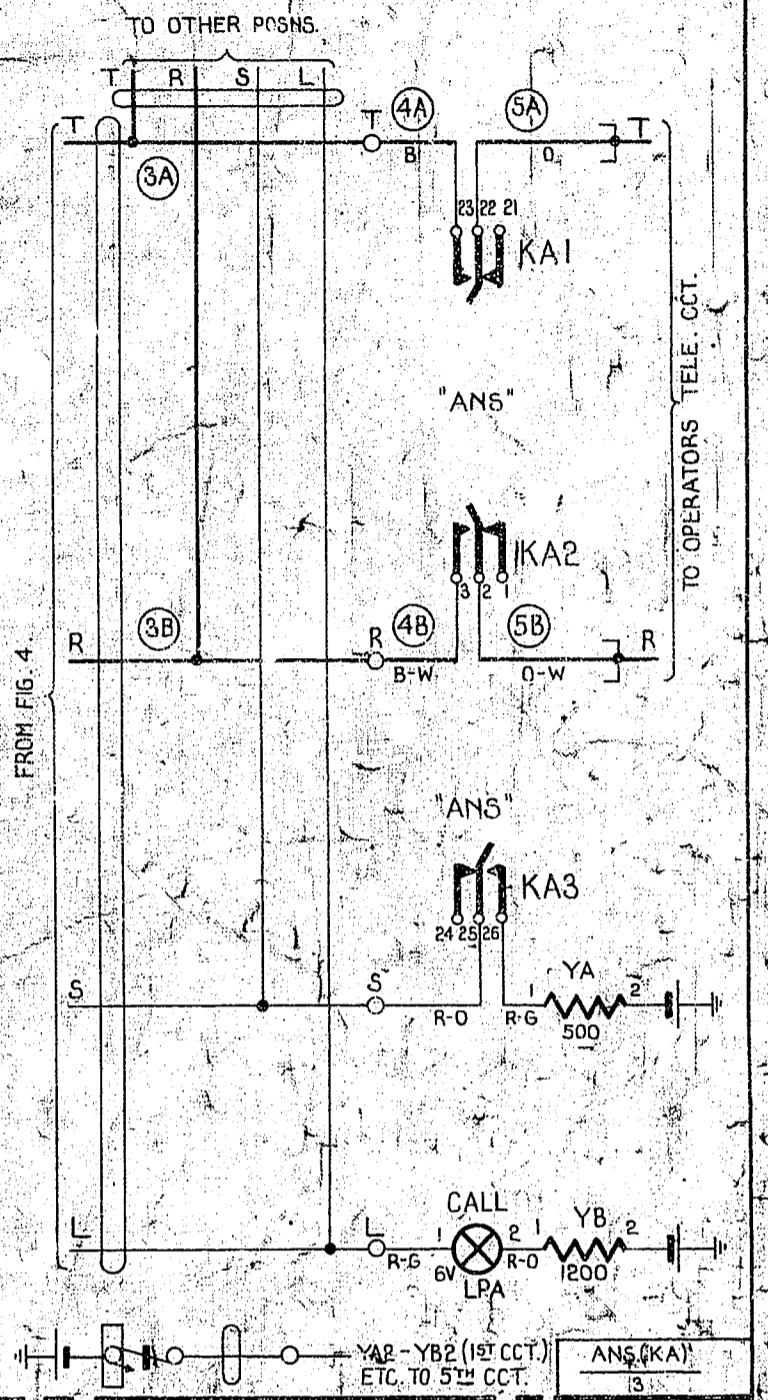


FIG. 3. TOLL BOARD. (EXPLANATORY ONLY.)

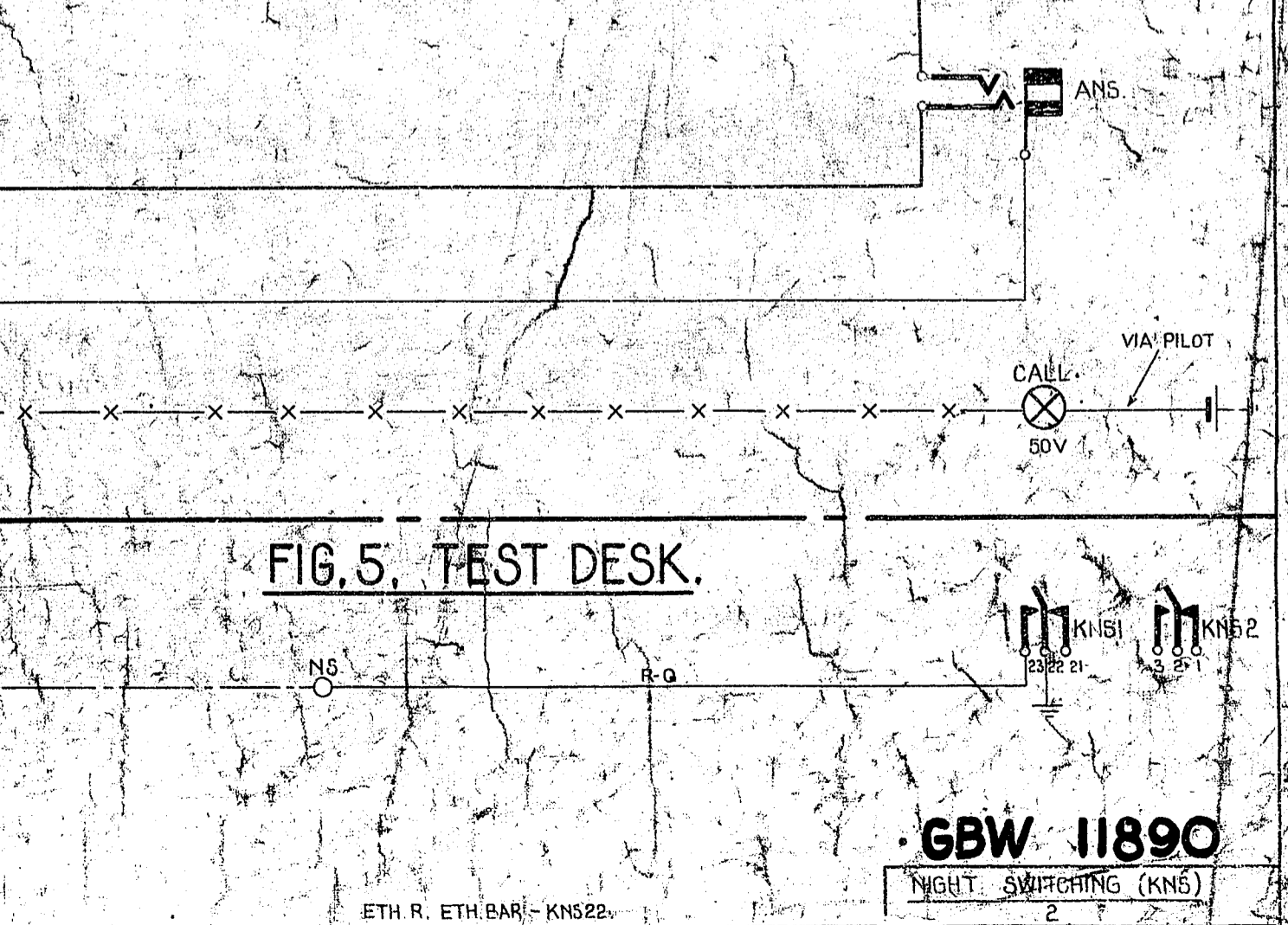
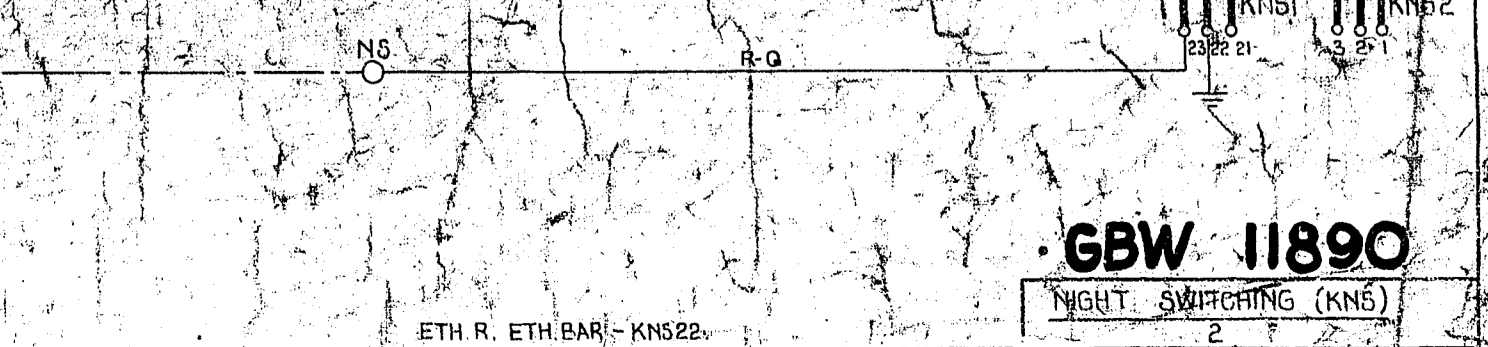


FIG. 5. TEST DESK.



NOT TO BE USED FOR NEW WORK

AMENDMENT PARTICULARS	ISSUE DATE	APPROVED
1	1-3-55	DAK
2	5-15-55	DAK

COMPLAINTS LINE'S TERMINATING ON TEST OR COMPLAINTS DESK W/ OR W/O NIGHT SWITCHING TO W.E. TYPE ROLL BOARD.

SHOW RELEASE SLOW OPERATE

GBW 11890

ETH R. ETH.BAR - KNS22.

NIGHT SWITCHING (KNS)