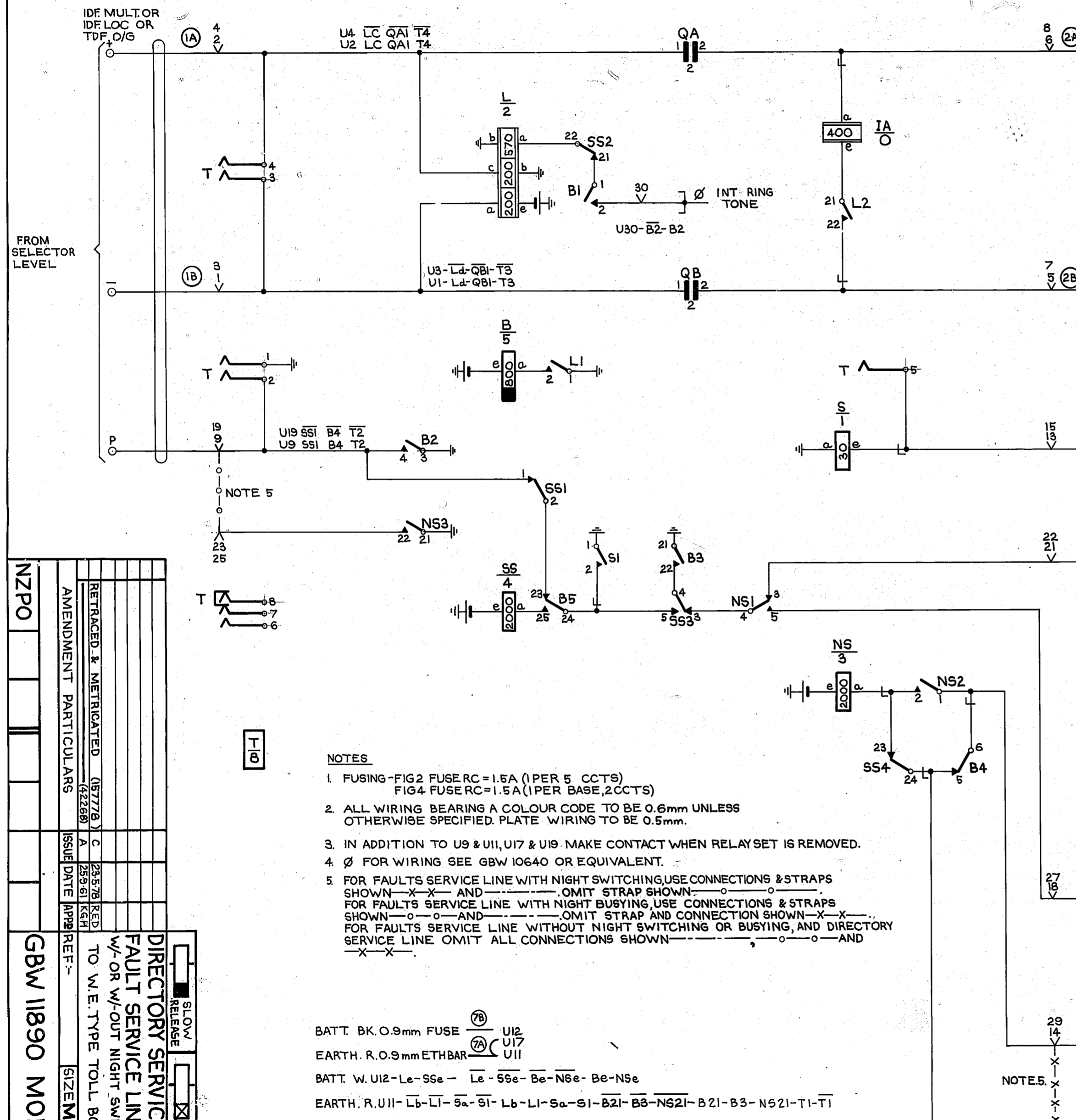


**FIG.4. RELAY SET.**

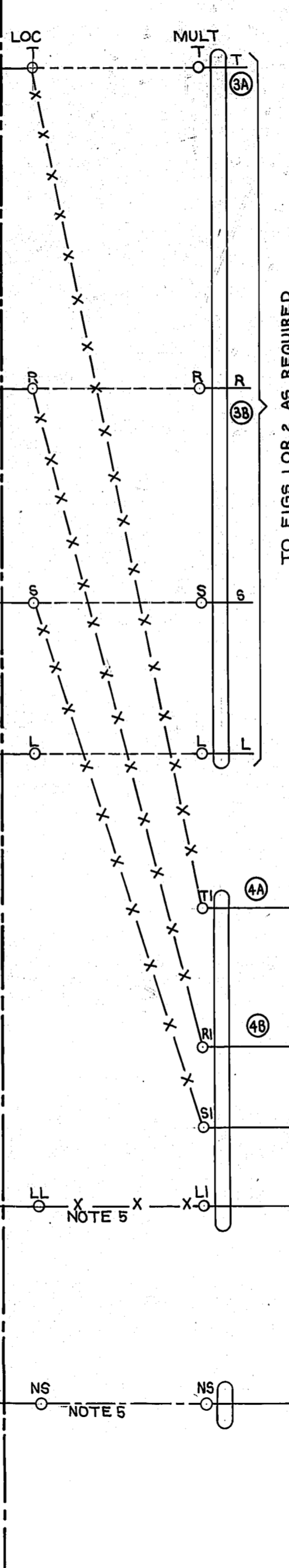


**NOTES**

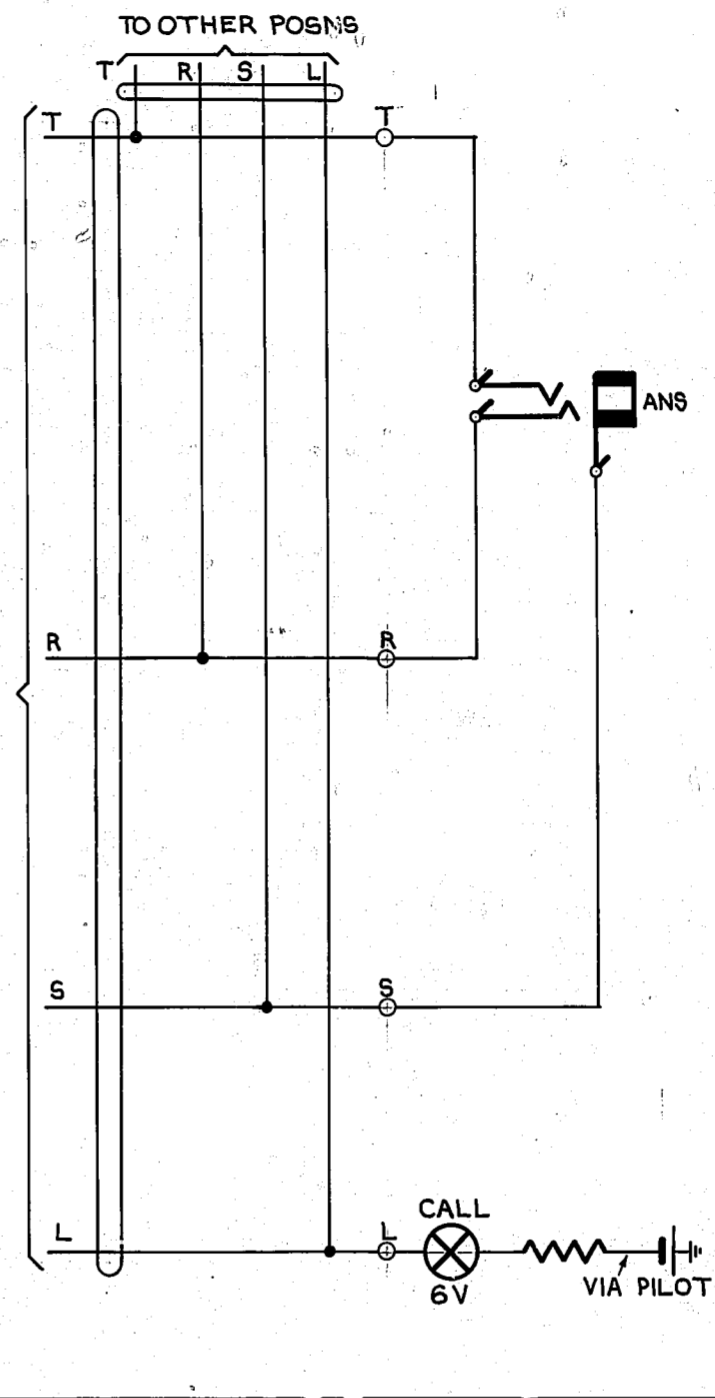
1. FUSING-FIG 2 FUSE RC=1.5A (1 PER 5 CCTS)  
FIG 4 FUSE RC=1.5A (1 PER BASE, 2 CCTS)
2. ALL WIRING BEARING A COLOUR CODE TO BE 0.6mm UNLESS OTHERWISE SPECIFIED. PLATE WIRING TO BE 0.5mm.
3. IN ADDITION TO U9 & U11, U17 & U19. MAKE CONTACT WHEN RELAYSET IS REMOVED.
4. Ø FOR WIRING SEE GBW 10640 OR EQUIVALENT.
5. FOR FAULTS SERVICE LINE WITH NIGHT SWITCHING, USE CONNECTIONS & STRAPS SHOWN -X-X- AND -O-O-. OMIT STRAP SHOWN. FOR FAULTS SERVICE LINE WITH NIGHT BUSYING, USE CONNECTIONS & STRAPS SHOWN -O-O- AND -X-X-. OMIT STRAP AND CONNECTION SHOWN -X-X- FOR FAULTS SERVICE LINE WITHOUT NIGHT SWITCHING OR BUSYING, AND DIRECTORY SERVICE LINE OMIT ALL CONNECTIONS SHOWN -X-X- AND -O-O-.

BATT. BK. 0.9mm FUSE (7B) U12  
 EARTH. R. 0.9mm ETHBAR (7A) U17  
 U11  
 BATT. W. U12-Lc-SSe- Le-SSe- Be-NSe- Be-NSe  
 EARTH. R. U11-Lb-LI- Sa-SI- Lb-LI- Sa-SI- B2I- B3- NS2I- B2I- B3- NS2I- T1-T1

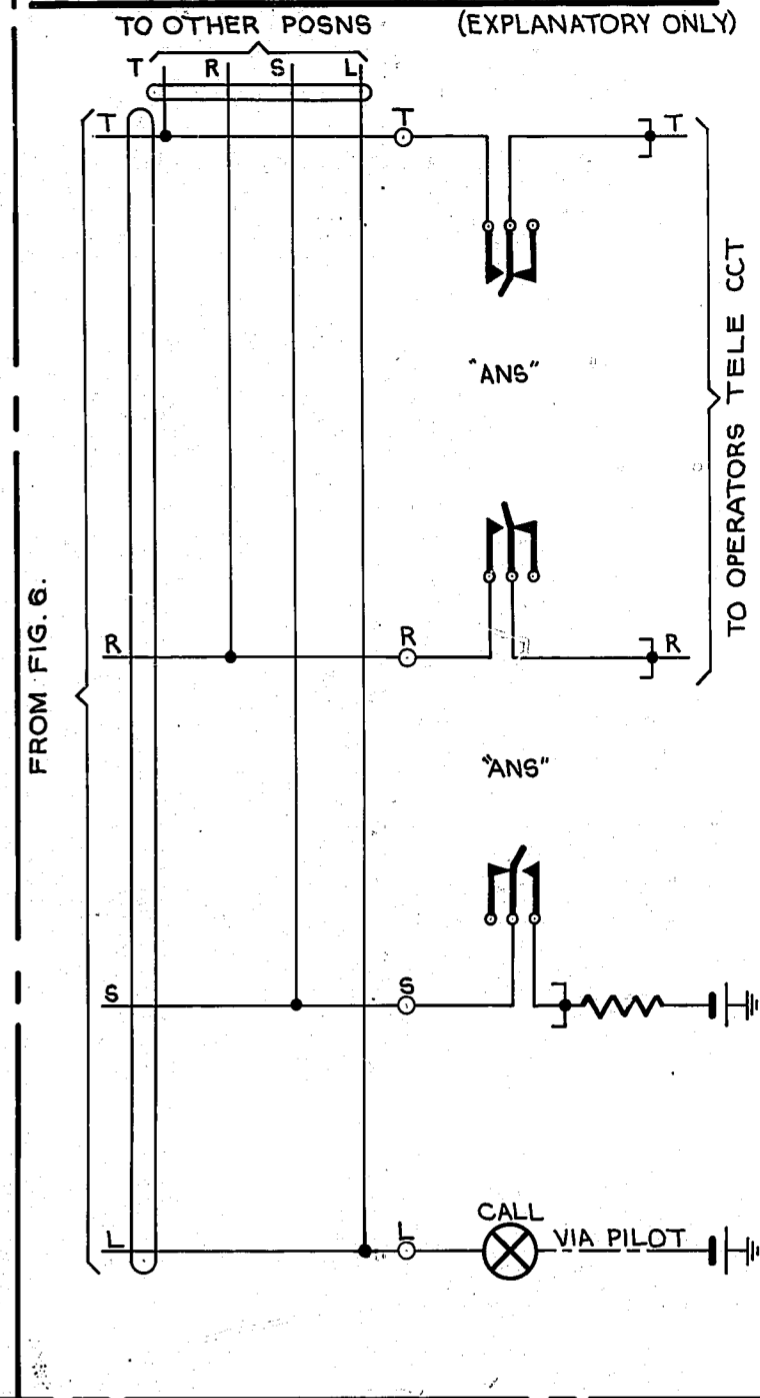
**FIG.6.IDF.**  
(WHEN REQD)



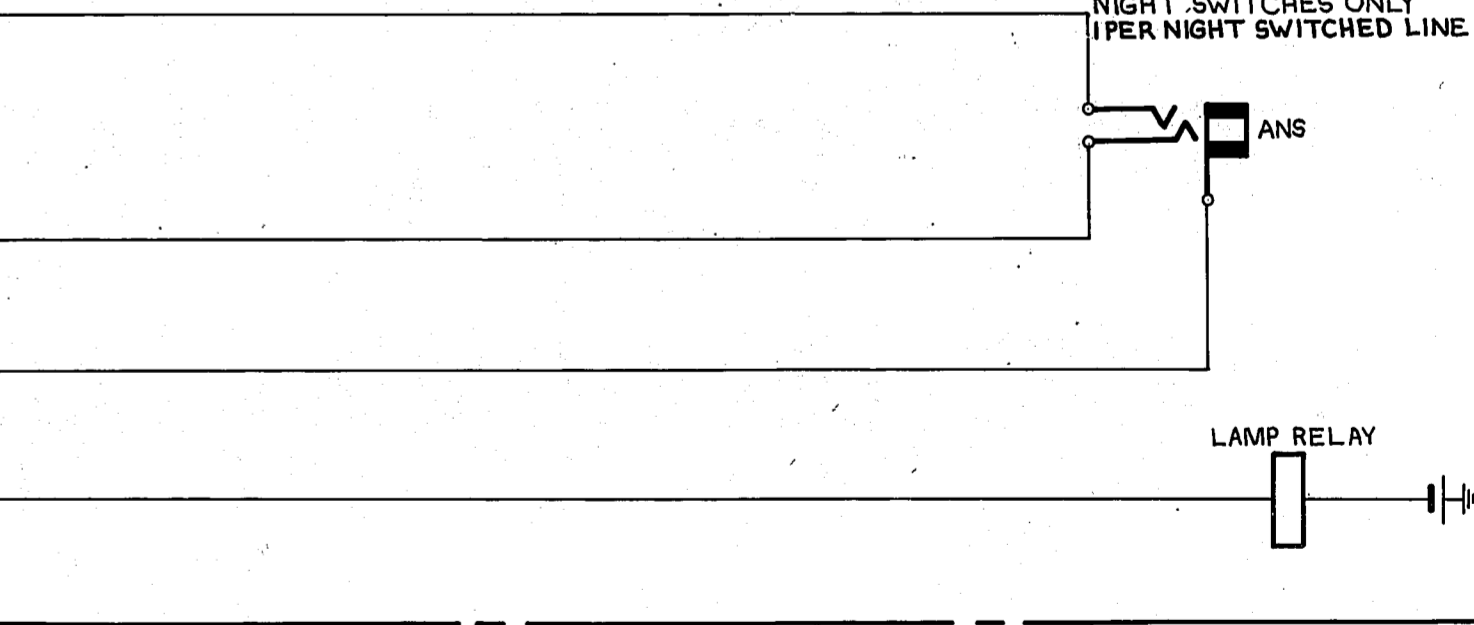
**FIG.1. TEST DESK.** (EXPLANATORY ONLY)



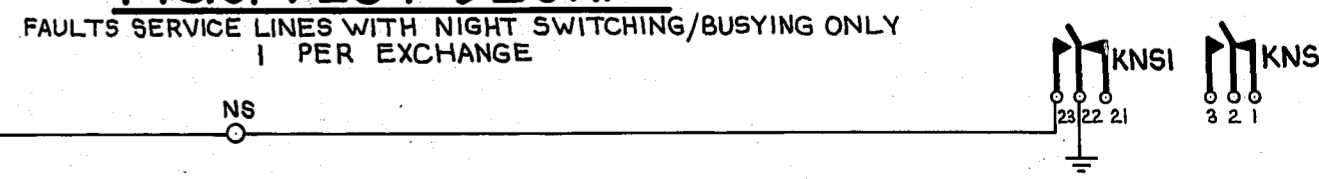
**FIG.2. DIRECTORY SERVICE OR FAULTS SERVICE DESK.** (EXPLANATORY ONLY)



**FIG.3. TOLL BOARD.** (EXPLANATORY ONLY)  
FAULTS SERVICE LINES WITH NIGHT SWITCHES ONLY  
1 PER NIGHT SWITCHED LINE



**FIG.5. TEST DESK.**



NZPO	RETRACED & METRICATED (15778)	C	23/5/78	SLOW RELEASE SLOW OPERATE
	AMENDMENT PARTICULARS (42268)	A	25/9/81	
GBW 11890 MODA	ISSUE DATE	APPR	REF -	DIRECTORY SERVICE OR FAULT SERVICE LINES W/-OR W/-OUT NIGHT SWITCHING TO W.E. TYPE TOLL BOARD
				SIZE M 50V C