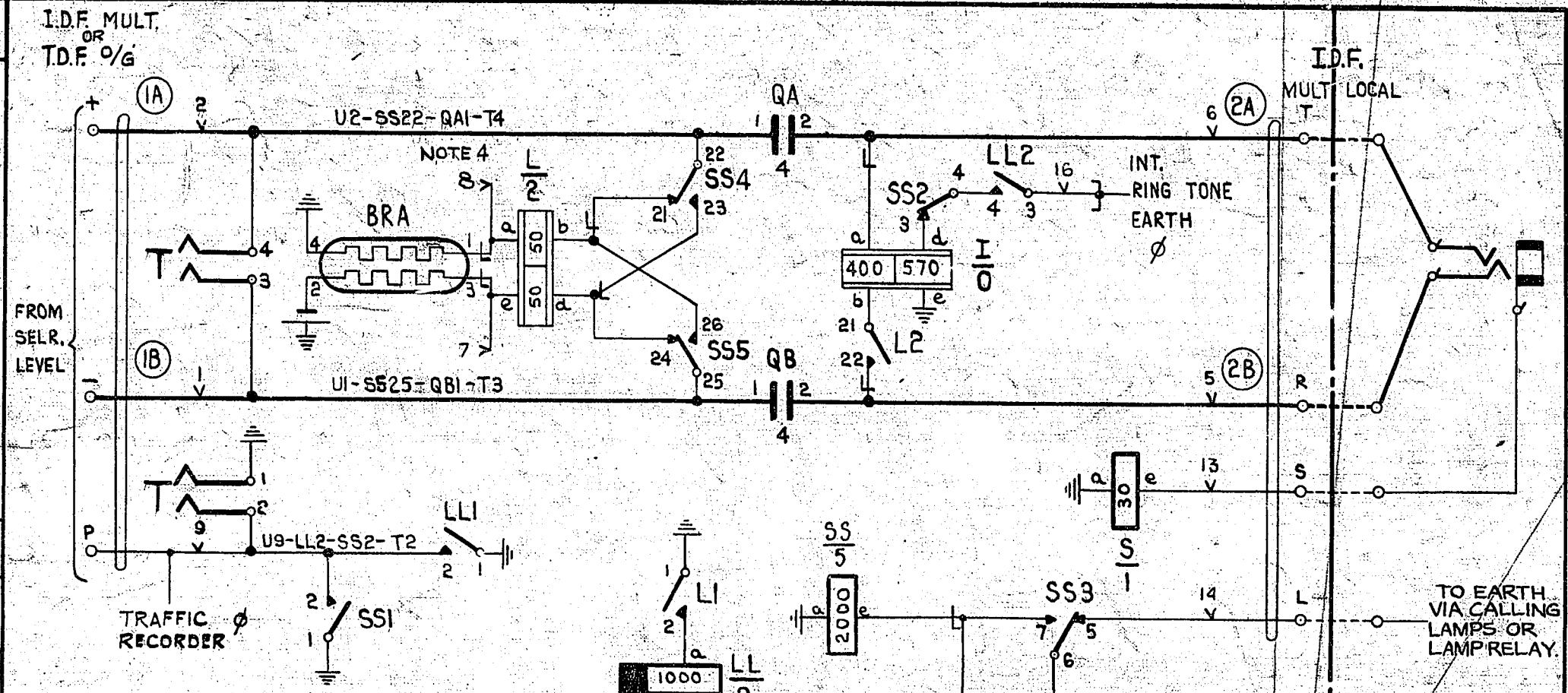
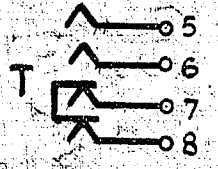


N.Z.P.O.	AMENDMENT PARTICULARS	
	ISSUE DATE	APP'D
CE 393/3/60	IA	26.6.64
	30.3.53	08/1
GBW 11860	SIZE F	50V/C
	TYPE	2000

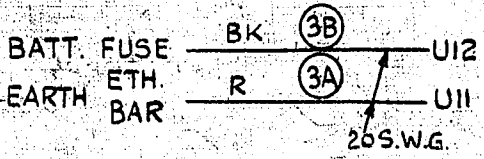


NOTES

1. FUSING 1.5A PER CIRCUIT.
2. SUPERSEDED BY GBW12240 FOR NEW WORK.
3. ∅ FOR WIRING SEE GBW10640 OR EQUIVALENT.
4. ON SOME EQUIPMENTS BRA1 & BRA3 ARE NOT CONNECTED TO U POINTS.



**T
18**



BATT. W U12 - LLc - BRA2 - YA2
EARTH R U11 - LI - LLI - Sa - Te - S5a - S51 - BRA4 - T1

NZ NOTES

- A. ADD STRAP ——— WHEN CALLING LAMP RELAYS ARE NOT PROVIDED

MANUAL BOARD
(EXPLANATORY ONLY)

SELECTOR LEVEL RELAY SET
(WE TYPE TOLL BOARD)
2000 TYPE

SLOW RELEASE
SLOW OPERATE