

FIG. 2A WITH P.G. LOCK-OUT FACILITIES
NOTE 7

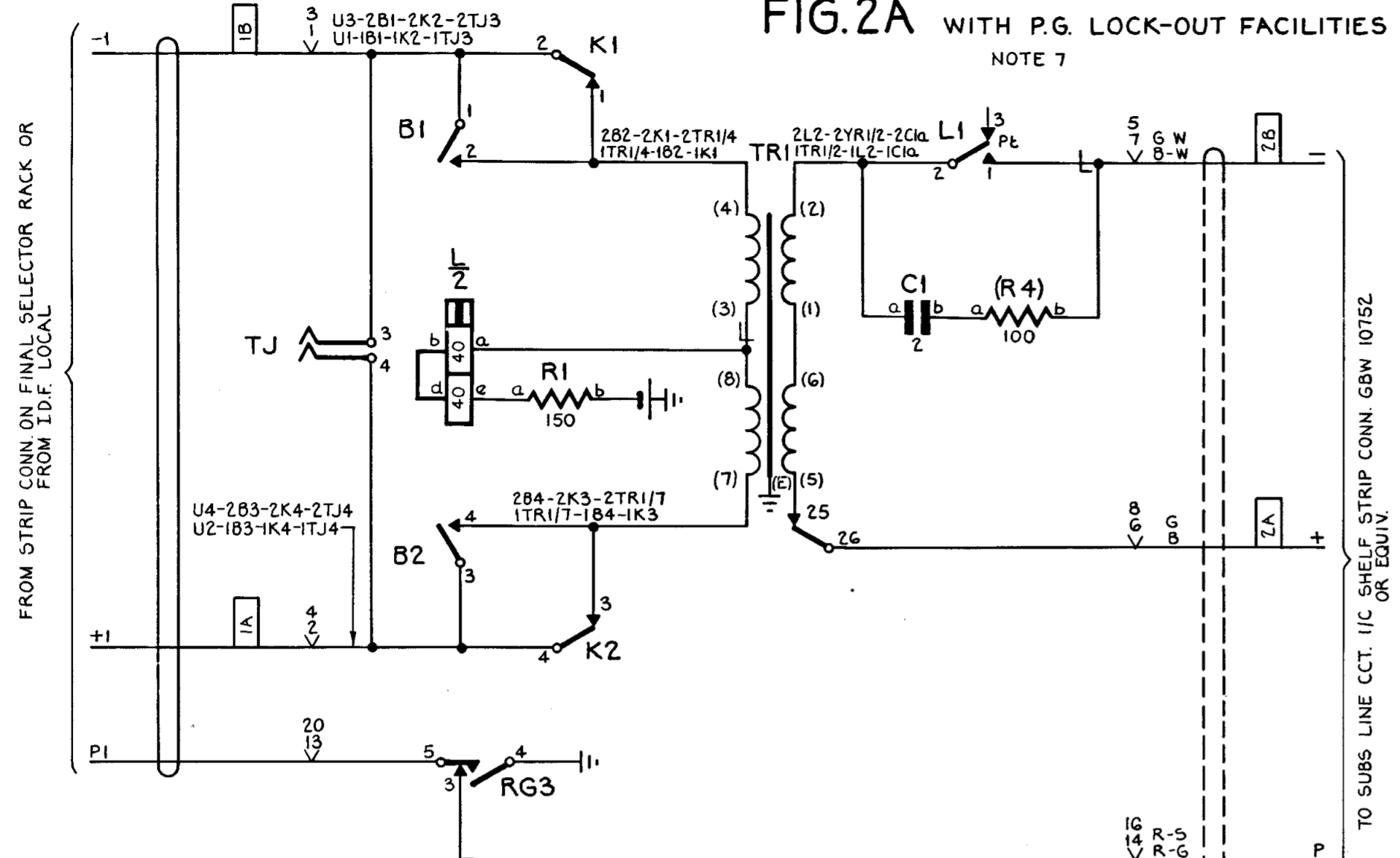


FIG. 1 WITHOUT P.G. LOCK-OUT FACILITIES
NOTE 7

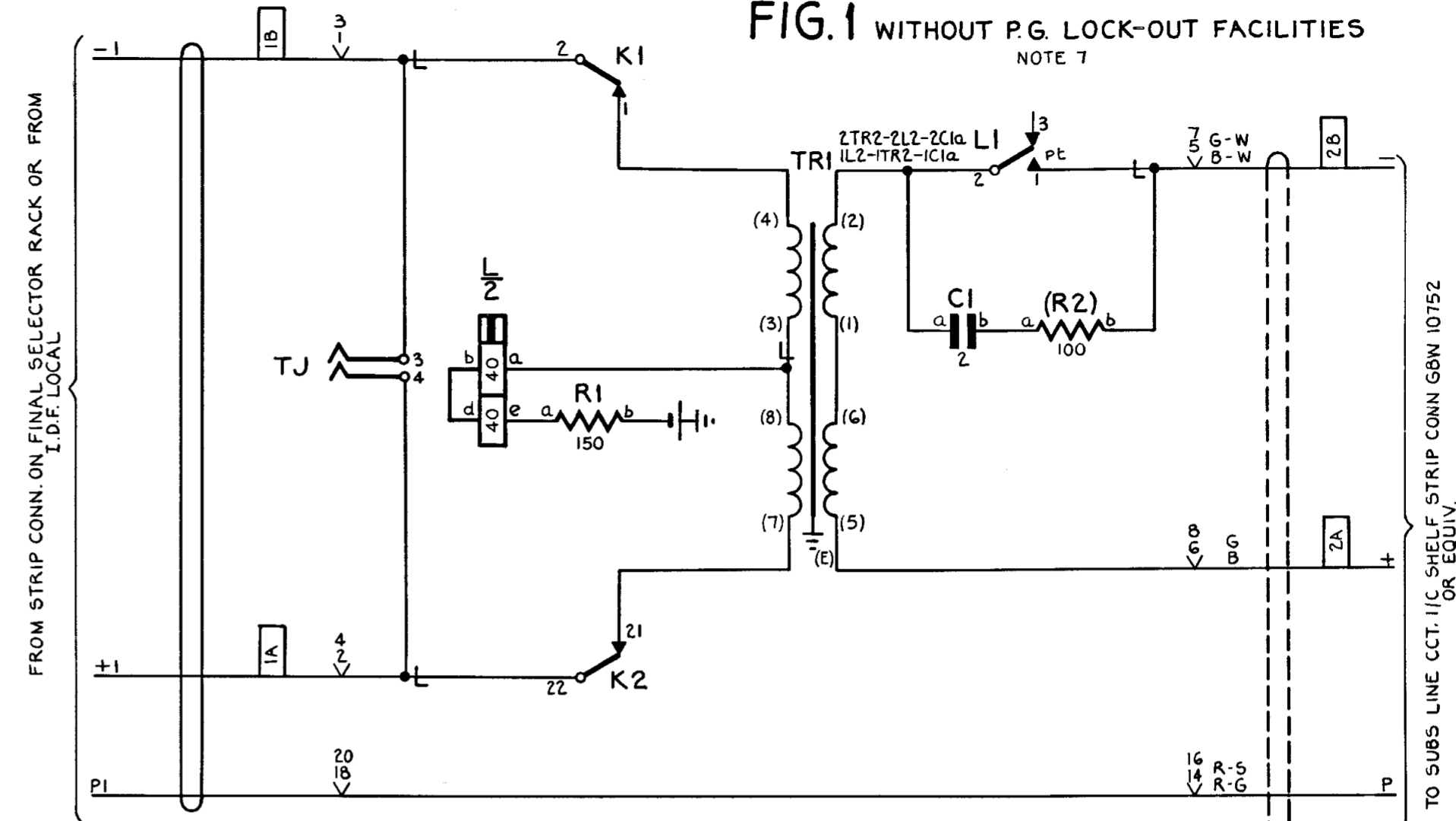


FIG. 2B P.G. LOCK-OUT METER
2 PER RELAY SET (2 CCTS) TO FIG. 2A
M.A.R.

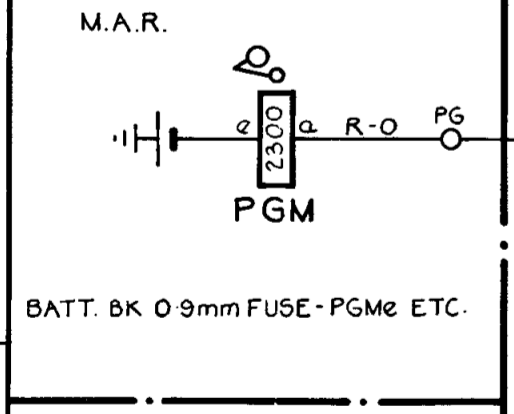
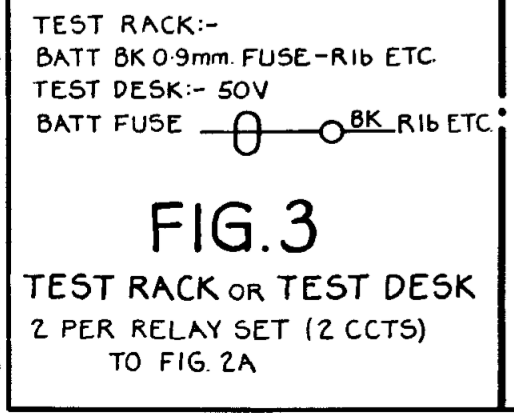


FIG. 3 TEST RACK OR TEST DESK
2 PER RELAY SET (2 CCTS) TO FIG. 2A



NOTES

1. FUSING: 1.5A PER RELAY SET (2 CCTS) FIG. 1
1.5A PER RELAY SET (2 CCTS) FIG. 2A
1.5A PER 10 METERS FIG. 2B
1.5A PER 2 CCTS, FIG. 3
2. RELAY TR IS A THERMAL RELAY MOUNTED ON RELAY R WITH AN OPERATE TIME OF APPROX. 60 SECS.
3. JACK POINTS U9 & U11 MAKE CONTACT WHEN RELAY SET IS REMOVED.
4. ALL WIRING TO BE 0.7mm. UNLESS OTHERWISE SPECIFIED. RELAY SET WIRING TO BE 0.5mm.
5. COMMON TO ALL FIG. 1 & 2A RELAY SETS ON SAME SHELF
6. Ø FOR WIRING SEE GBW 10640 OR EQUIV.
7. RELAY SETS TO FIGS 1 & 2A ARE INTERCHANGEABLE BUT ONLY ONE RELAY SET (2 CCTS) TO FIG. 2A IS EQUIPPED PER SHELF.
8. TERMINAL LP AND ASSOCIATED WIRE COLOUR PROVIDED ONLY WHEN FIG. 3 IS ON TEST DESK.

- BATT. BK 0.9mm FUSE **3B** U12
- ETH. R. 0.9mm ETH BAR **3A** U11
- BATT. W U12-1B2-1K2-2B2-2K2-1R1B-2R1B-1R2B-2R2B-2R3B
- ETH. R. U11-1TR1E-2L22-1L22-2TR1E

PROOF

SLOW RELEASE		SLOW OPERATE		50V	E
RURAL PARTY LINE REPEATER					
SIMPLEX TO LOOP DIALLING					
2000 TYPE					
ISS	DATE	DEL	DC	ORDER	CKD
DRN	5-5	SECT.	CKD	ORIGIN:	5-5 SECT.
TCD	N.S.	APPD	STANDARD:	ATW 22001	
NZPO ENGINEER-IN-CHIEF, WELLINGTON					
SHT 1 OF 1		SIZE A2		GBW 11851	

16-12-80	N.S.	D.W.	17175	RETRACED & METRICATED
14-10-54			30501	R2 FIG. 2A WAS 230 OHMS
15-2-54			31222	CWH NOTES 7 & 8 AND PROVISION OF FIGS 2B & 3 ADDED
22-6-53			7333	CWH