

FIG. IA.

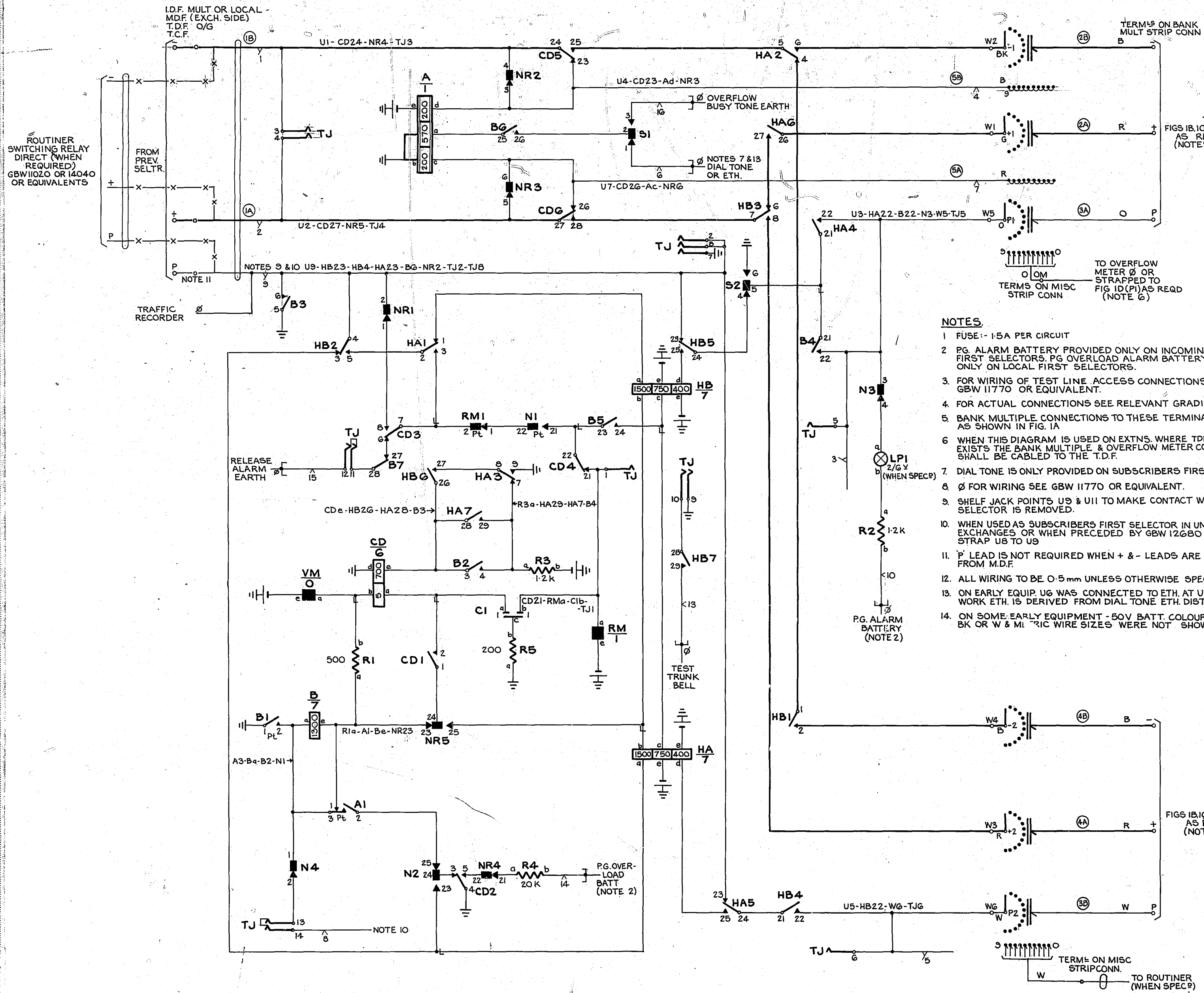


FIG. IB O/G 3 WIRE CIRCUITS

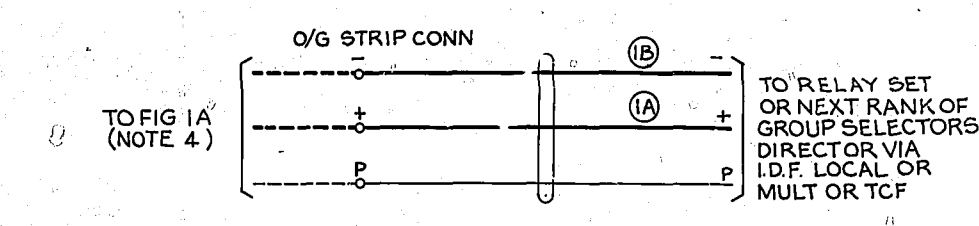


FIG. IC TIE CIRCUITS BETWEEN RACKS

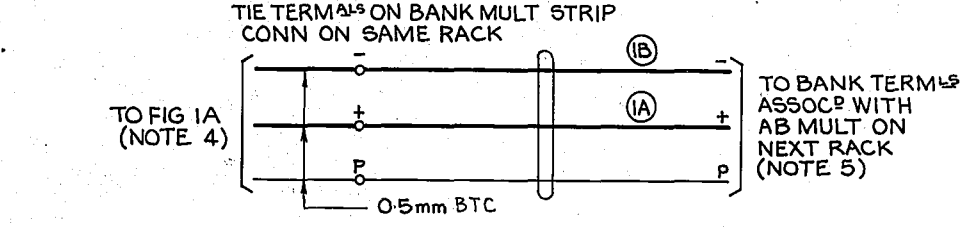


FIG. ID 11TH STEP TIE CIRCUITS BETWEEN RACKS

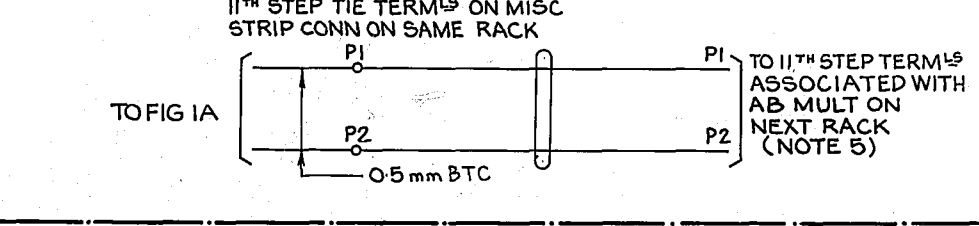


FIG. IE O/G 5 WIRE CIRCUITS (WITH FULL AVAILABILITY)

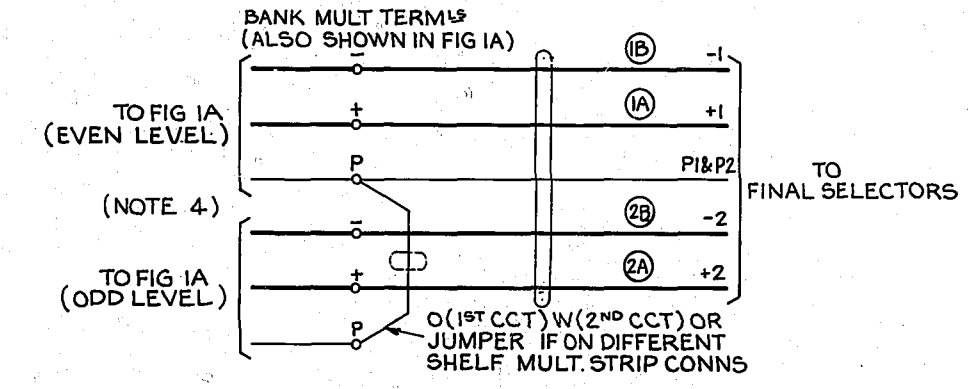


FIG. IF O/G 5 WIRE CIRCUIT

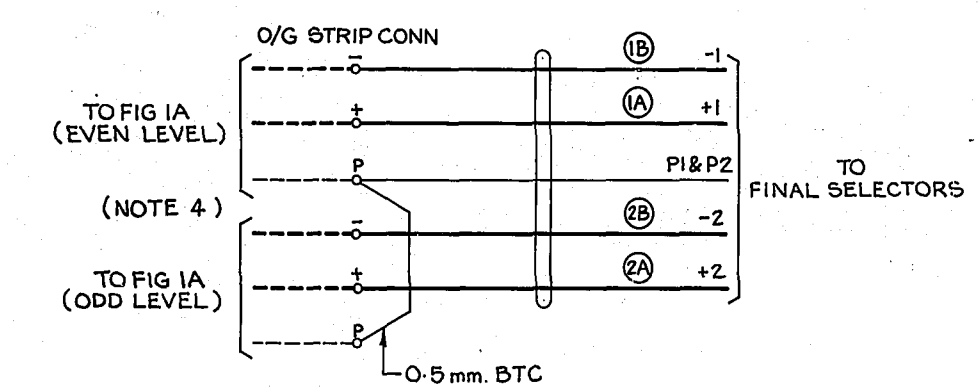
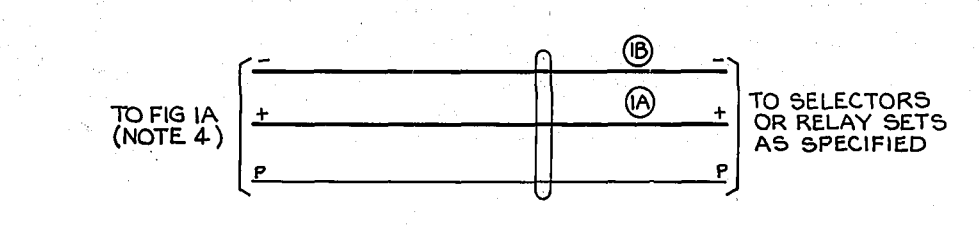


FIG. IG O/G 3 WIRE CCTS. (WITH FULL AVAILABILITY)



- NOTES**
- 1 FUSE: - 1.5A PER CIRCUIT
 - 2 PG. ALARM BATTERY PROVIDED ONLY ON INCOMING & LOCAL FIRST SELECTORS. PG OVERLOAD ALARM BATTERY PROVIDED ONLY ON LOCAL FIRST SELECTORS.
 3. FOR WIRING OF TEST LINE ACCESS CONNECTIONS SEE GBW 11770 OR EQUIVALENT.
 4. FOR ACTUAL CONNECTIONS SEE RELEVANT GRADING CHARTS
 5. BANK MULTIPLE CONNECTIONS TO THESE TERMINALS ARE AS SHOWN IN FIG. IA
 6. WHEN THIS DIAGRAM IS USED ON EXTNS. WHERE TDF CAPACITY EXISTS THE BANK MULTIPLE & OVERFLOW METER CONNECTIONS SHALL BE CABLED TO THE T.D.F.
 7. DIAL TONE IS ONLY PROVIDED ON SUBSCRIBERS FIRST SELECTORS
 8. Ø FOR WIRING SEE GBW 11770 OR EQUIVALENT.
 9. SHELF JACK POINTS U9 & U11 TO MAKE CONTACT WHEN SELECTOR IS REMOVED.
 10. WHEN USED AS SUBSCRIBERS FIRST SELECTOR IN UNISELECTOR EXCHANGES OR WHEN PRECEDED BY GBW 12680 STRAP U8 TO U9
 11. P LEAD IS NOT REQUIRED WHEN + & - LEADS ARE CABLED FROM M.D.F.
 12. ALL WIRING TO BE 0.5mm UNLESS OTHERWISE SPECIFIED
 13. ON EARLY EQUIP U6 WAS CONNECTED TO ETH. AT U11 FOR NEW WORK ETH. IS DERIVED FROM DIAL TONE ETH. DISTRIBUTION.
 14. ON SOME EARLY EQUIPMENT - 50V BATT. COLOUR WAS BK OR W & M. RIC WIRE SIZES WERE NOT SHOWN.

BATT. V: - U12-HBc-R3b-Ae-HAe-VMe-RMe

ETH. R: - U11-CDd-CD4-Ab-HA9-B1-B5-S6-R5a-TJ7-TJ9

BATT. FUSE $\frac{V}{0.7mm}$ U12

ETH BAR $\frac{R}{0.7mm}$ U11

REDRAWN FROM 155 4 25:2:72 (157007)		4-A	5-978	R.E.D.
NOTE 2 REVISED, NOTE 14 ADD (30255)		4	25-272	B.S.H
AMENDMENT PARTICULARS	155	DATE	APP	REF: GSI-24-O
GROUP SELECTOR 200 OUTLET 2000 TYPE FOR RKS WITH GRADING FACILITIES		SIZE	A1	50Y H
GBW 11761	DRAWN	CHECKED	WIRING	ENGR. FAB