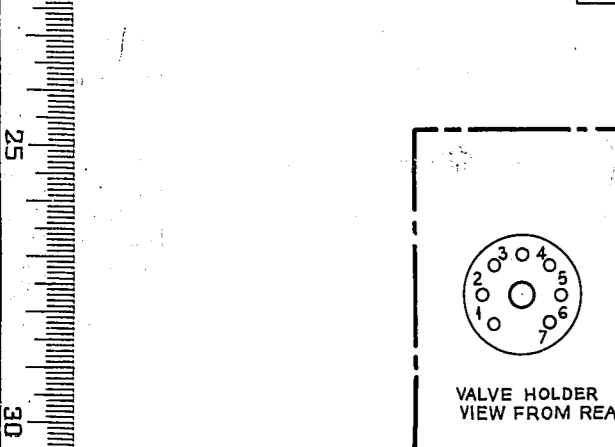
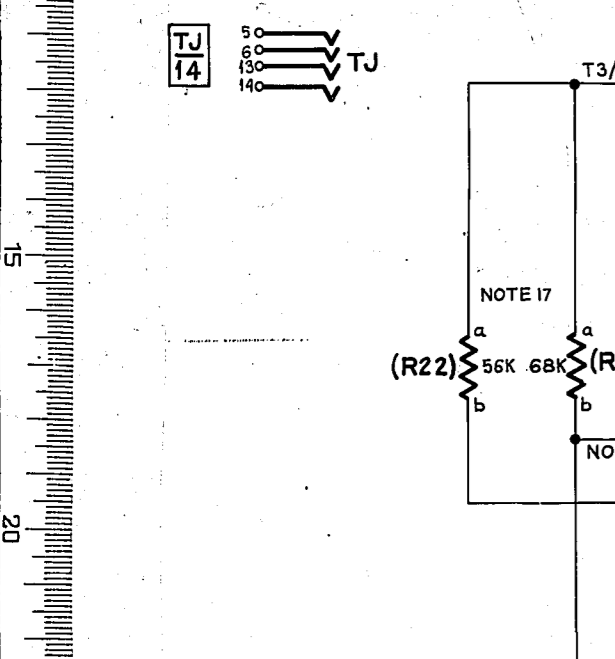
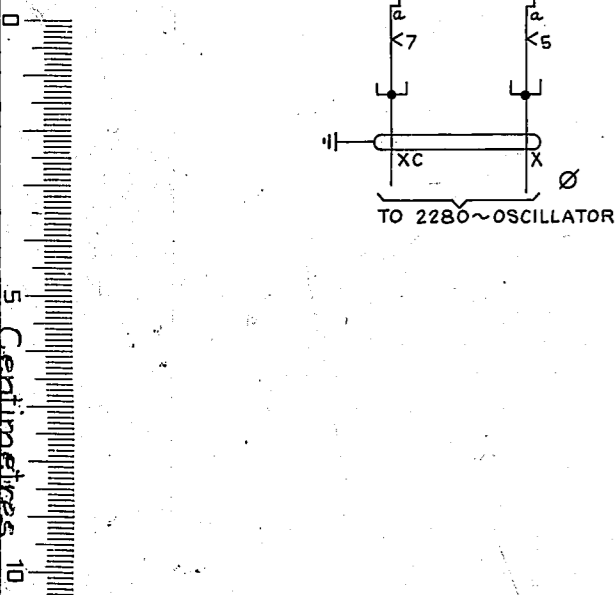


- NOTES:-**
- FUSING - 1.5A FOR 50V NEG.  
0.5A FOR 50V POS.  
1.0A FOR 6.3V AC.
  - T2 TERM 2,3,6 & DR7 STRAPPED FOR GUARD RATIO ADJUSTMENT & IF REQUIRED STRAP BETWEEN TERM 5 & 9, MAY BE DISCONNECTED.
  - WHEN IN NORMAL CONDITION (I.E. NO SIGNAL BEING RECEIVED) RELAY X15 OPERATED.
  - SHELF JACK U POINTS 9 & 11 TO MAKE CONTACT WHEN RELAY SET IS REMOVED.
  - WHEN THIS CCT IS USED ON A BOWTHWAY LINE, SHELF U PTS 1,2,3,15,20,21,22,23,24,25,27,28,31,32,55 & 63 TO BE STRAPPED TO THE SIMILARLY NUMBERED U POINTS OF THE ASSOCIATED O/G CIRCUIT GBW 11680. STRAP U9 TO U13 & OMIT U PT. STRAPS 1-28,2-32,18-20,21-23,22-24 AND 25-27.
  - T3 TERM 6,10, & DR11 STRAPPED FOR FINAL TUNING ADJUSTMENT.
  - U8 & U26, AND U29 & U30 TO BE STRAPPED ON SHELF WIRING EXTERNALLY.
  - PAD CONTROL:- FOR REPEATED TRUNKS STRAP U53-U55, FOR UNREPEATED TRUNKS OVER 3db NO STRAP. FOR UNREPEATED TRUNKS UNDER 3db STRAP U55-U57.
  - WHEN DIRECTLY ASSOCIATED WITH MANUAL BOARD (I/C NOT VIA A SELECTOR) OMIT STRAP BETWEEN U56 & U58.
  - ALL WIRING TO BE 0.5mm. UNLESS OTHERWISE SPECIFIED.
  - ON SOME RELAYS SETS THE RESISTORS R1-R6 COMPRISING URI ARE EQUIPPED ON A RESISTOR MOUNTING AND THEIR DESIGNATIONS R1-R6 BECOME R16-R21 RESPECTIVELY.
  - FOR WIRING SEE ASSOCIATED COMMON SERVICES DIAGRAM GBW 12110 OR EQUIV.
  - THE WINDINGS OF RELAY PC ARE CONNECTED DIFFERENTIALLY.
  - THE RELEASE ALARM IS WIRED TO THE SHELF JACK U POINTS, BUT IS NOT USED ON THIS CIRCUIT.
  - STRAP SHELF JACK U POINTS U61 & U65 ON UNIDIRECTIONAL CIRCUITS ONLY.
  - TO OBTAIN AN IMPULSE OUTPUT RATIO WITHIN THE SPECIFIED TEST LIMITS, STRAP OUT RESISTORS R23-R26 INDIVIDUALLY, OR IN PARALLEL COMBINATIONS, AS REQUIRED.
  - T2/13,15 NORMALLY CONNECTED TO T2/16 WHEN TEST CONDITIONS REQUIRE R22 INSTEAD OF R13 REMOVE WIRE FROM T2/16 AND CONNECT TO T2/15.

TO TOLL LINE VIA M.D.F. OR VIA MAIN I.D.F. AND/OR CARRIER I.D.F.

CARRIER I.D.F. LOCAL OR MAN. I.D.F. LOCAL OR MULT. OR M.D.F. EXCH. SIDE

TO I/C SELR GBW 11630 OR GBW 14580 OR EQUIV. OR VIA CALL TRAP CCT GBW 13590 OR EQUIV



POS. BATT. R-B U13-R6Bb  
 POS. BATT. R-B U15 27b  
 POS. BATT. R-B U17-V1/7-V2/7  
 BATT. W-U12-PCd-Ae-CDe-DAe-TXe-AKe-BSe  
 TWe-DRb-De-T2/12-TV/12-V2/2-V2/6-C6b-C7b  
 R12b-C4b-C5b-R8b-R9b  
 ETH. R U11-PCa-X22-BR26-BRc-BR1-BR3-CD3-DA21-AK1-BS1  
 BS4-TW5-D1-T4/E-T3/E-T2/E-T1/E-R10a

- POS. BATT. FUSE 0.7mm. R-B U15  
 U17  
 U19
- NEG. BATT. FUSE 0.7mm BK U12  
 U61
- ETH. BAR 0.7mm R U11
- 6.3V A.C. FUSE 0.7mm BN U16
- ETH. BAR 0.7mm BN-W U14

SUPERSEDED BY GBW 16460 FOR NEW WORK

R27-31 ADD R4-5 DEL. FROM WIRING	(17619b)	5B	4-4-78	REP.
NZMRD & METRICATED.				
TERMS. 6 & 8 ON T3 WERE TRANSPOSED	(30538)	5A	8-9-72	B.S.H.
ALT. CONNS. TO CARRIER, I.D.F. ADDED	NOTE B. A.M.D. (21534)	5	16-4-70	R.W.
SUPERSESION NOTE ADDED	EDITORIAL (4737a)	4		
EDITORIAL AMENDMENTS ONLY		3		
I.D.F. MULT. TERMINATION ADDED	TITLE REVISION	2		
		1		

AMENDMENT	PARTICULARS	ISSUE DATE	APPD

SIZE M 50V

GBW 11671

N.Z.P.O. DRAWN CHECKED WIRING CIRCUIT

0  
5 Centimeters  
10  
15  
20  
25  
30