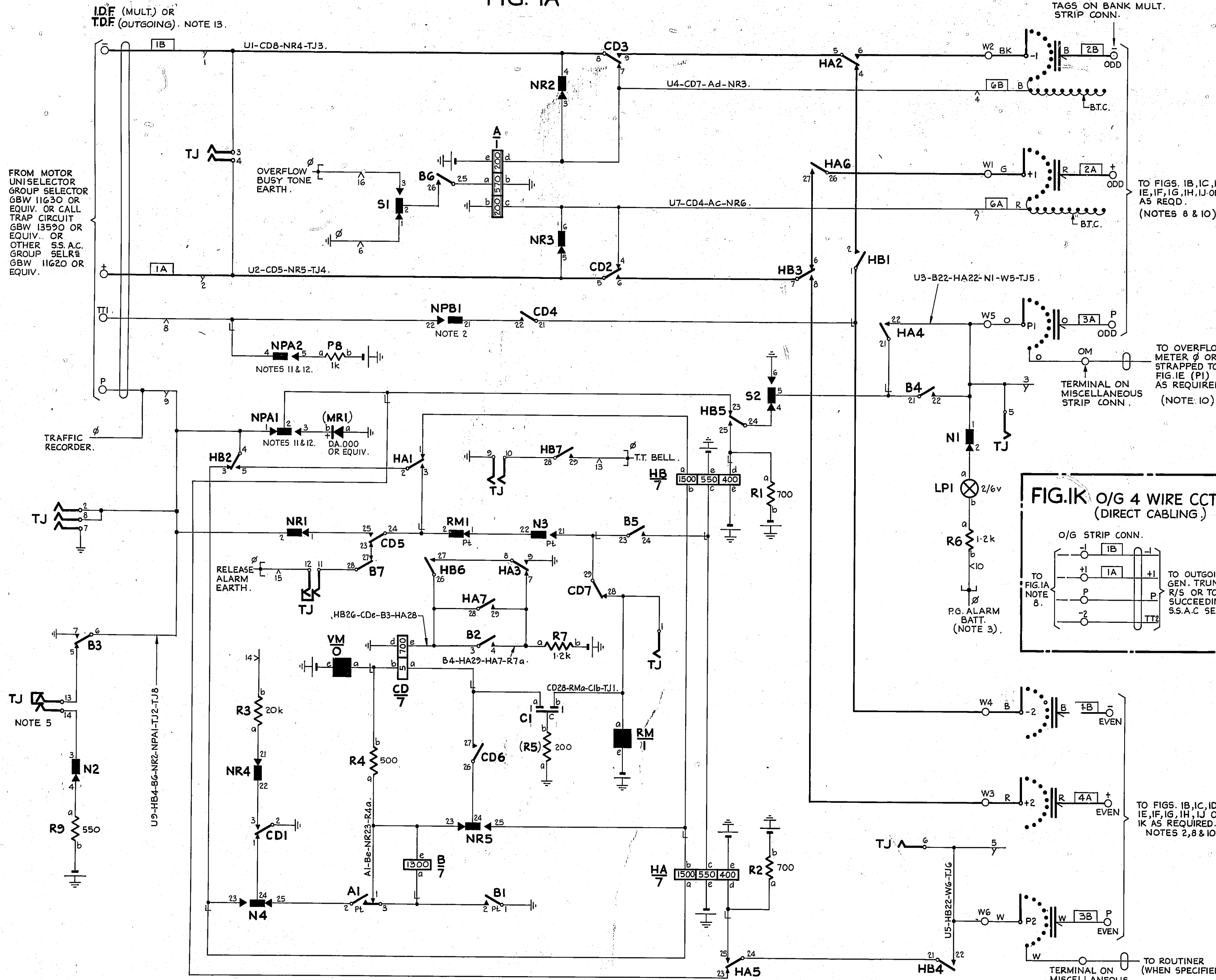


FIG. 1A



- NOTES :-
- FUSE: 1.5A PER CIRCUIT.
  - NPB SPRINGS TO OPERATE ON AC TRANSIT OR AC TO GENERATOR SIGNALLING. LEVELS P2 OUTLETS OF LEVELS CONCERNED TO BE EARTHED & -2 OUTLETS TO BE CONNECTED TO TT2 WIRE OF AC RELAY SETS, OR TT1 OF SUCCEEDING AC SELECTORS. THE AVAILABILITY OF THE LEVELS CONCERNED IS REDUCED TO 10 OUTLETS.
  - P.G. ALARM BATTERY TO BE PROVIDED ON INCOMING & FIRST SELECTORS ONLY.
  - Ø FOR WIRING SEE GB.W.11770.
  - WHEN BATTERY TESTING IS REQUIRED LINK TO BE IN TJ.13 & 14. WHEN ABSENCE OF EARTH TESTING IS REQUIRED LINK TO BE REMOVED FROM TJ.13 & 14.
  - SHELF JACK POINTS U9 & U11 TO MAKE CONTACT WHEN SWITCH IS REMOVED.
  - ALL WIRING NOT OTHERWISE SPECIFIED TO BE 0.5mm.
  - FOR ACTUAL CONNECTIONS SEE RELEVANT GRADING CHARTS.
  - BANK MULTIPLE CONNECTIONS TO THESE TERMINALS ARE AS SHOWN IN FIG. 1A.
  - WHEN THIS DIAGRAM IS USED ON EXTENSIONS WHERE T.D.F. CAPACITY EXISTS, THE BANK MULTIPLE & OVERFLOW METER CONNECTIONS SHALL BE CABLED TO T.D.F.
  - N.P.A. SPRINGS TO OPERATE ON LEVELS GIVING ACCESS TO FINAL SELECTORS AND OTHER D.C. CONNECTIONS WITH UNDER 3dB LOSS.
  - NPA SPRINGS MUST NOT BE ARRANGED TO OPERATE ON LEVEL ONE BECAUSE ROUTINER TEST LINE SWITCHING RELAYS CAN BE ASSOCIATED WITH THAT LEVEL.
  - THE CONNECTIONS FROM CALL TRAP CIRCUITS ARE ALWAYS MADE VIA THE I.D.F.

BATT. FUSE BK 0.7mm **5B** U12  
 ETH BAR R. 0.7mm **5A** U11  
 BATT. W-U12-HBc-R1b-R2b-Ae-HAe-VMe-RMe-R7b-R8b-R9b.  
 ETH R-U11-CDd-CD2-Ab-B1-B7-HA9-S6-R5a-TJ7-TJ9.  
 MR1a

FIG. 1B O/G 3 WIRE CCTS

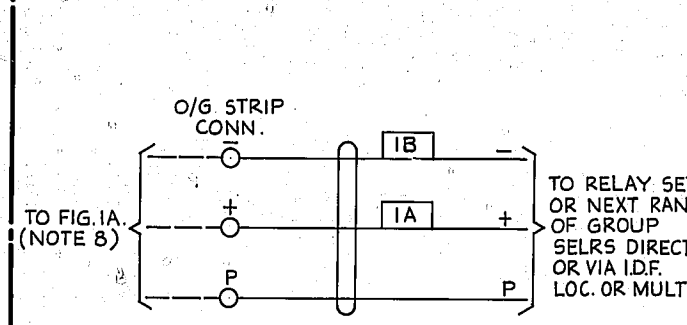


FIG. 1C TIE CCTS BETWEEN RACKS

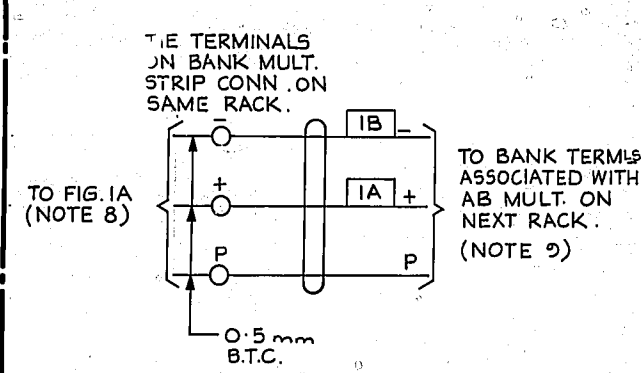


FIG. 1D O/G 3 WIRE CCTS (WITH FULL AVAILABILITY)

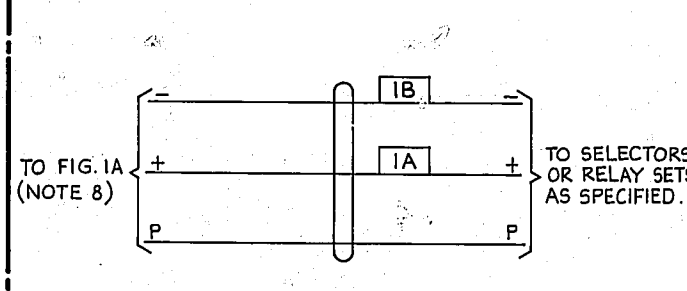


FIG. 1E 11TH STEP TIE CCTS BETWEEN RACKS.

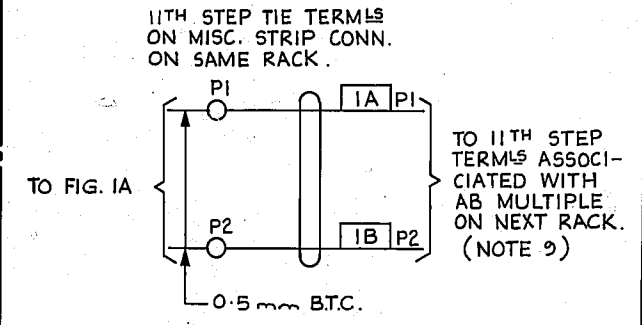


FIG. 1F O/G 5 WIRE CCT

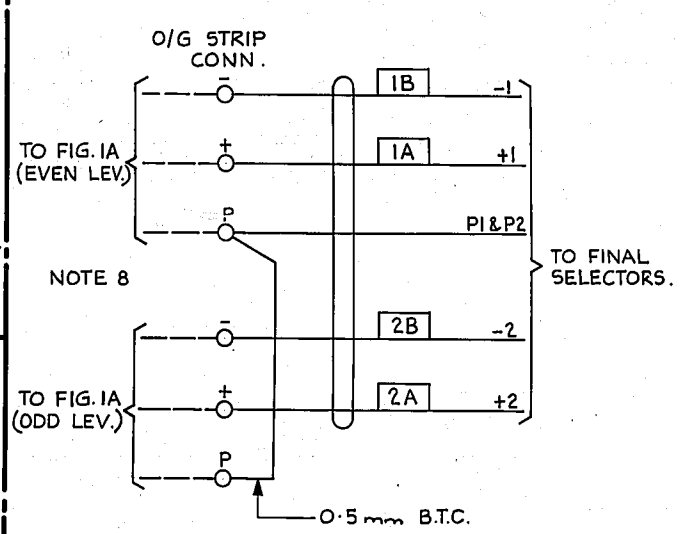


FIG. 1G O/G 5 WIRE CCT (WITH FULL AVAILABILITY)

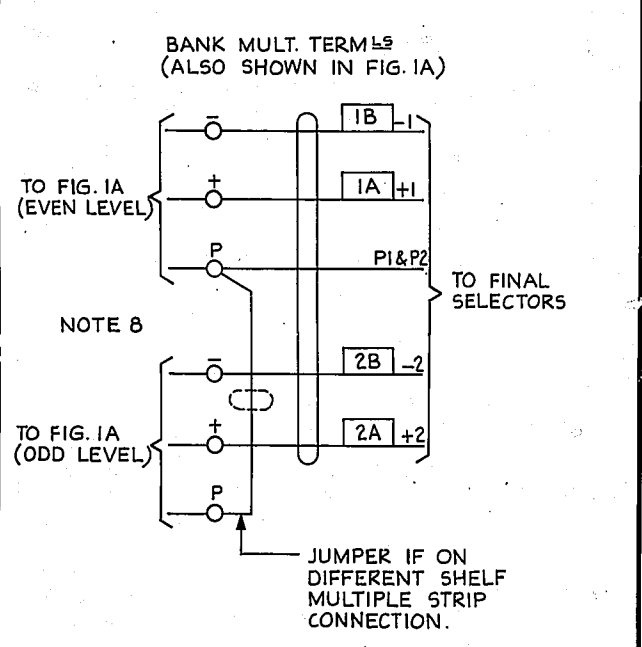


FIG. 1K O/G 4 WIRE CCTS (DIRECT CABLING)

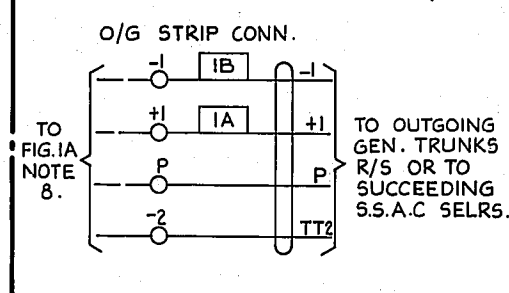


FIG. 1J O/G 4 WIRE CCTS (VIA I.D.F.)

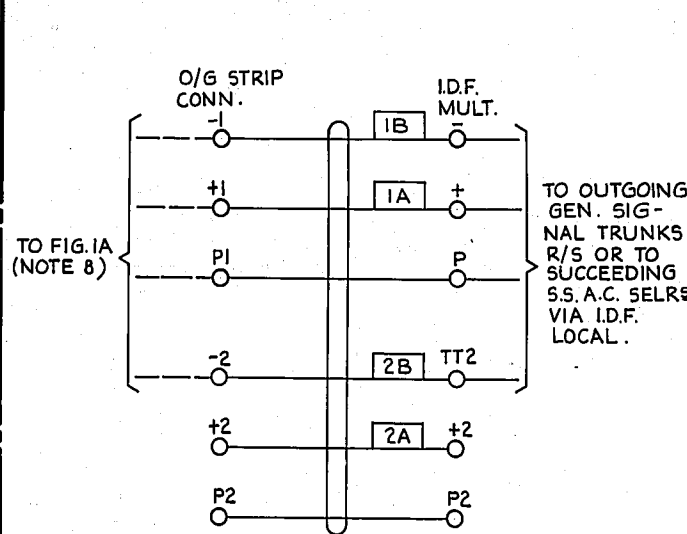
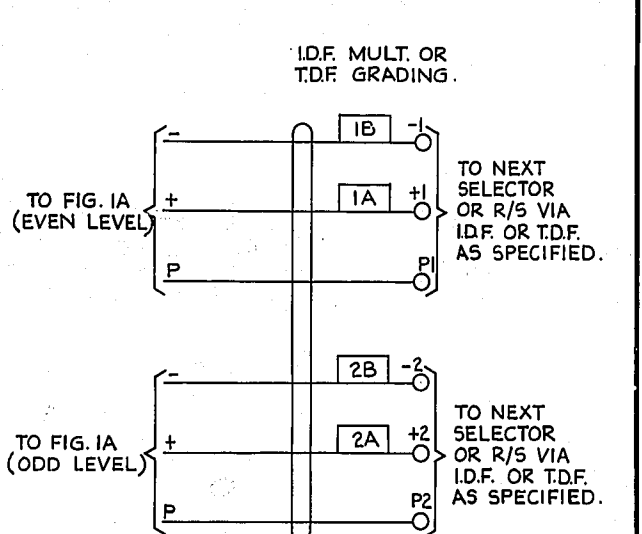


FIG. 1H CENTRALISED GRDG.



SUPERSEDED BY GBW 11621

NPB	NPA	N	NR	S	TJ
1	2	4	5	2	14

NZAC. SIGNALLING SYSTEMS SELECTOR 200 OUTLET (NOTE 2) ABSENCE OF EARTH OR BATTERY TESTED 2000 TYPE			
RETRACED & METRICATED.	(17609)	GA	
ODD & EVEN LEVELS REVERSED.	(5828)	C	10-6-58
AMENDMENT PARTICULARS	ISS	DATE	APD
NZPO	DRAWN	CHECKED	WIRING
J.V.			
GBW 11620			SIZE A1 50V S

