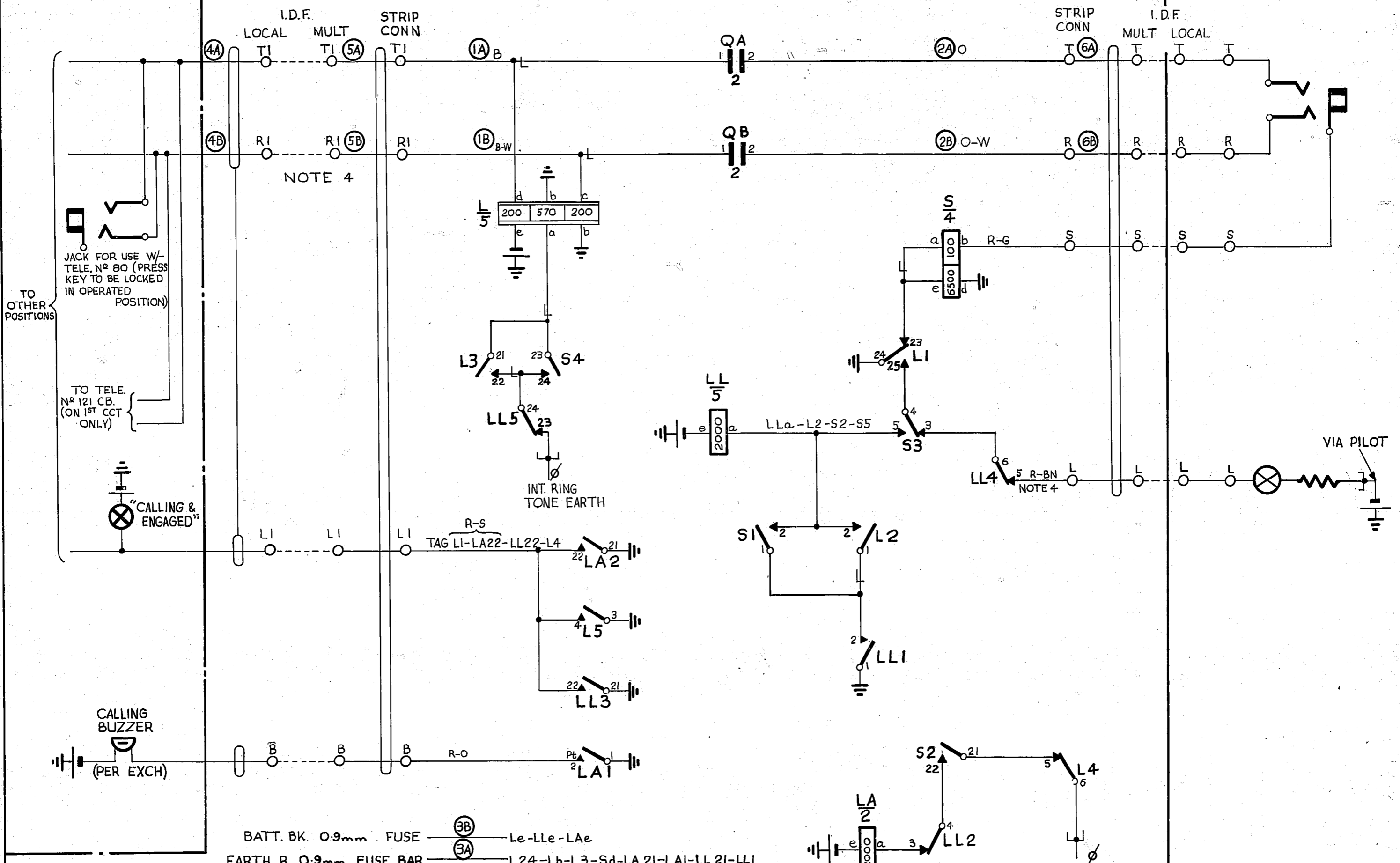


M.D.F.
(EXPLANATORY ONLY)

M.A.R.

TEST DESK
(EXPLANATORY ONLY)

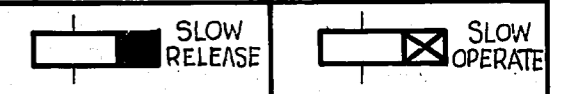


NOTES

1. FUSE :- 1.5A PER CIRCUIT
2. ALL WIRING TO BE 0.6mm UNLESS OTHERWISE SPECIFIED
PLATE STRAPPING TO BE 0.6mm OR 0.5mm
3. Ø FOR WIRING SEE G.B.W. 10870 (M.D.F.) OR GBW 10690 (M.A.R.) OR EQUIVALENTS
4. WHEN IDF IS NOT PROVIDED CONNECTIONS TO BE CABLED DIRECT FROM TERMINALS ON M.A.R. TO M.D.F. & TEST DESK

BATT. BK. 0.9mm FUSE — (3B) — Le-LLe-LAe
 EARTH. R. 0.9mm FUSE BAR — (3A) — L24-Lb-L3-Sd-LA 21-LA1-LL 21-LL1

RETRACED & METRICATED	(154589)	2A	15.5.78	REP
TEST DESK WAS CABLED DIRECT NOTE 4 REVISED	(67454)	2	10.7.56	CWA
	(11622)	1	16.6.52	CWA
AMENDMENT PARTICULARS	ISSUE	DATE	APP ⁹	



TEST DESK
SPEAKER CIRCUIT TO
LOCAL M.D.F.

SIZE S 50V C

GBW 11571

NZ.P.O.