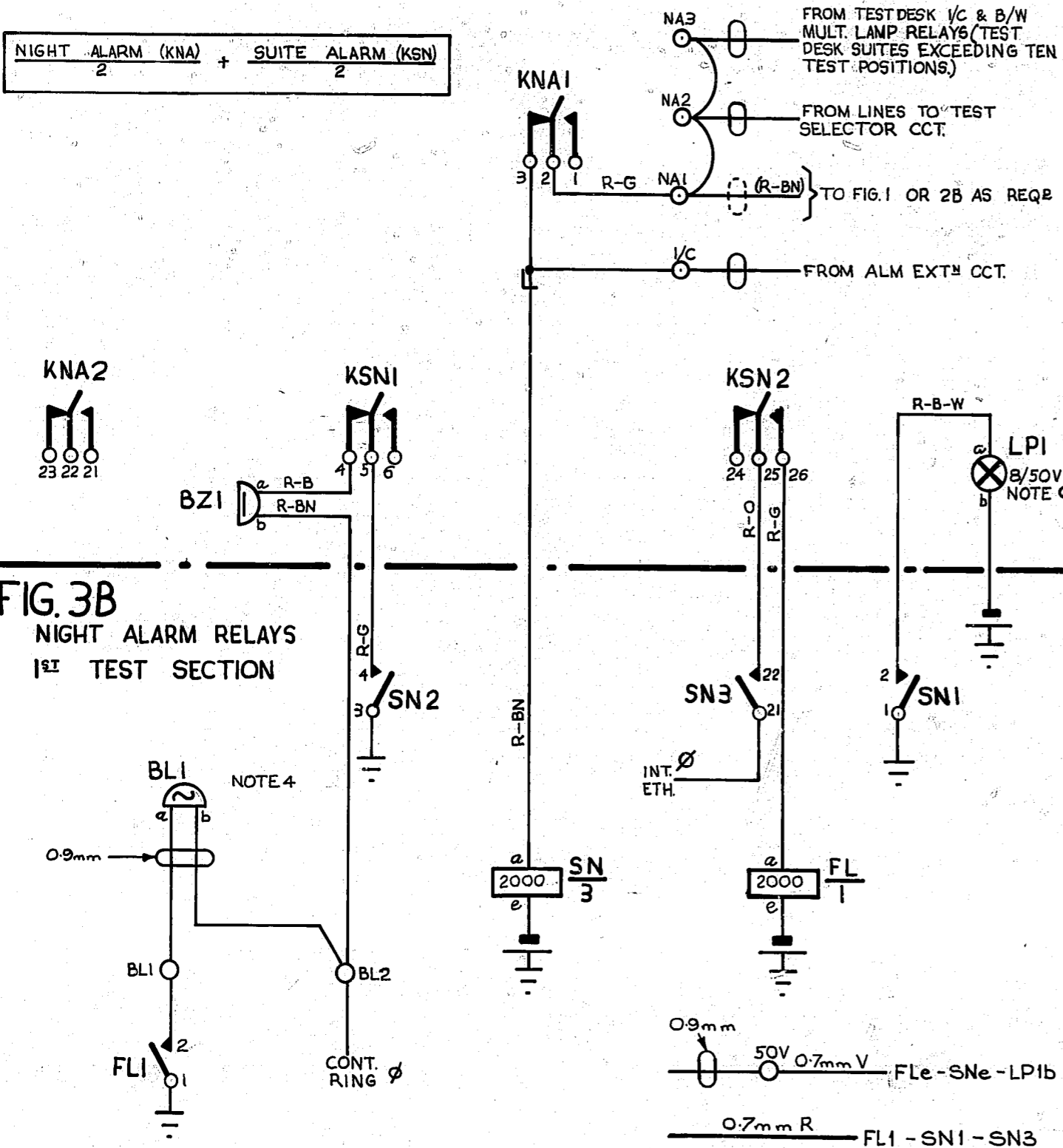
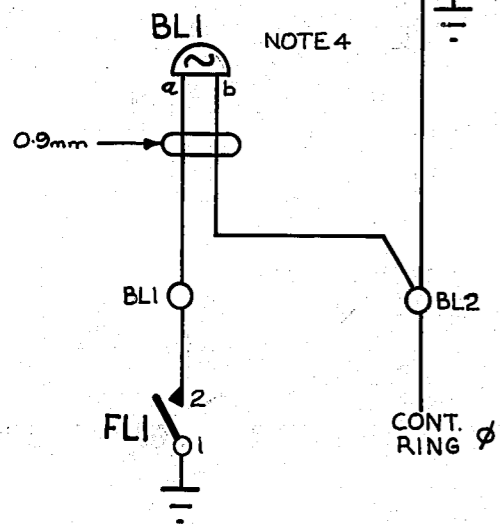


**FIG. 3A NIGHT ALARM (1 PER TEST DESK)**  
1<sup>ST</sup> MISC. SECTION



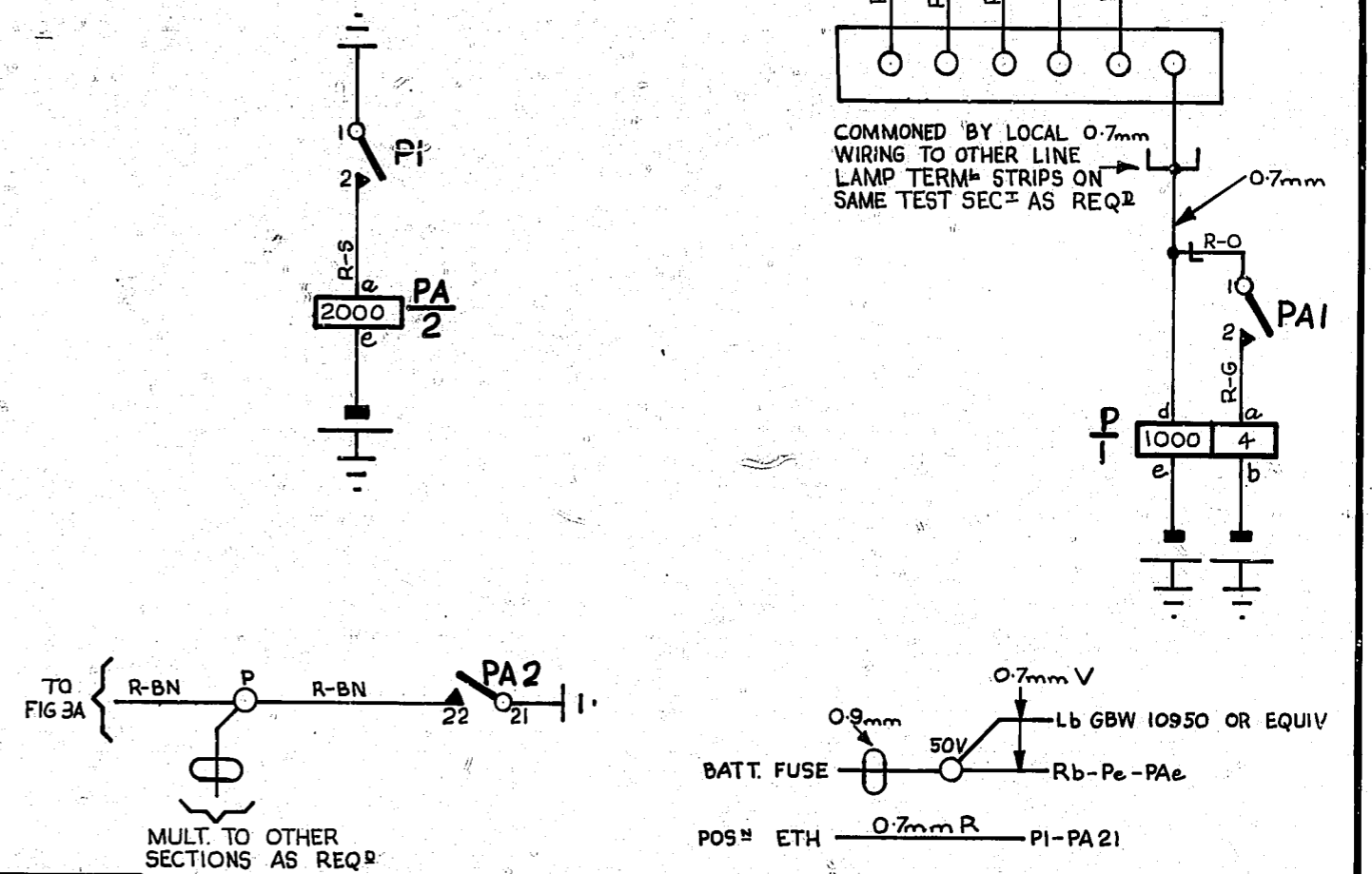
**FIG. 3B NIGHT ALARM RELAYS (1<sup>ST</sup> TEST SECTION)**



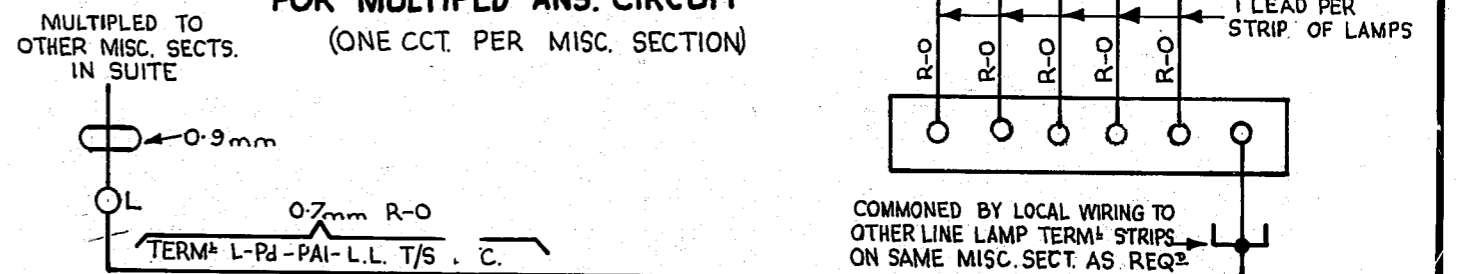
**NOTES:-** 1. FUSING - FIG.1 1.5A PER CCT.  
FIG.2B 3.0A PER CCT.  
FIG.3B 1.5A PER CCT

2. ALL WIRING TO BE 0.5mm UNLESS OTHERWISE SPECIFIED.
3. Ø FOR WIRING SEE GBW 11480 OR EQUIV.
4. THE BELL BL1 WILL BE MOUNTED IN A CONVENIENT POSITION BY THE CUSTOMER
5. ON SOME EARLY EQUIPMENT COLOUR OF BATT. WIRING WAS BK.
6. ON SOME EARLY EQUIPMENT LPI WAS 12/50V

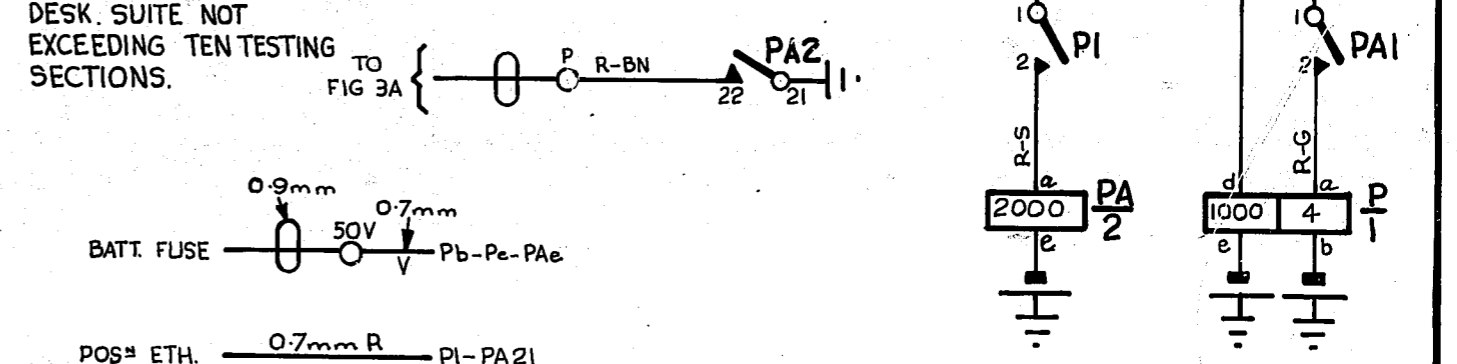
**FIG. 1 TESTING SECTION PILOT CIRCUIT FOR NON-MULTIPLIED ANS. CIRCUITS.**  
(1 CCT. PER TESTING SECTION)



**FIG. 2A MISC. SECTION PILOT CIRCUIT FOR MULTIPLIED ANS. CIRCUIT**  
(ONE CCT. PER MISC. SECTION)



**FIG. 2B PILOT CIRCUIT RELAYS (1 CCT. PER TEST DESK. SUITE NOT EXCEEDING TEN TESTING SECTIONS.)**



AMENDMENT	PARTICULARS	ISSUE	DATE	APPD	REF.
1					

RETRACED & METRICATED	(154598)	3B	23-578	RE.D
BZ1 WAS SHOWN AS A.C. BUZZER	(2121)	3A	9-872	B-SH
NOTES 5 & 6 ADDED	(34216)	3	4-11-71	B-SH
FIGS 2&3 SUBDIVIDED INTO FIGS 2A,2B,3A,3B	(60447)	2	7-4-66	

NZPO	2	DRAWN H.G.E.	CHECKED H.E.	WIRING 30 H.E.	CIRCUIT
------	---	--------------	--------------	----------------	---------

TEST DESK  
PILOT & NIGHT ALARM  
CIRCUITS

GBW 11441

