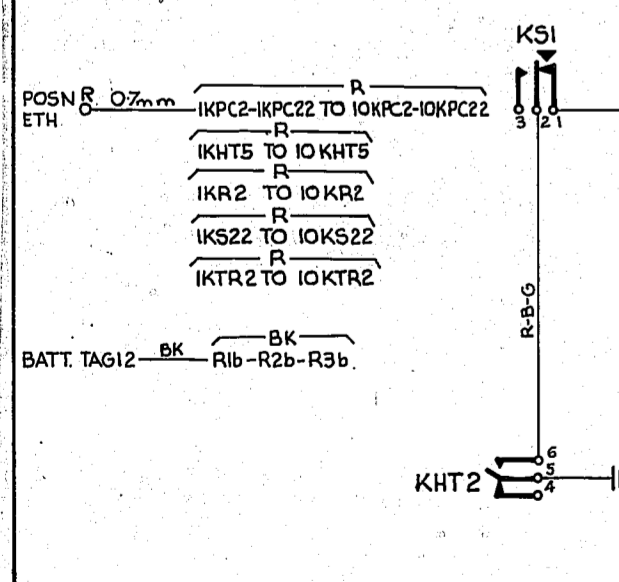
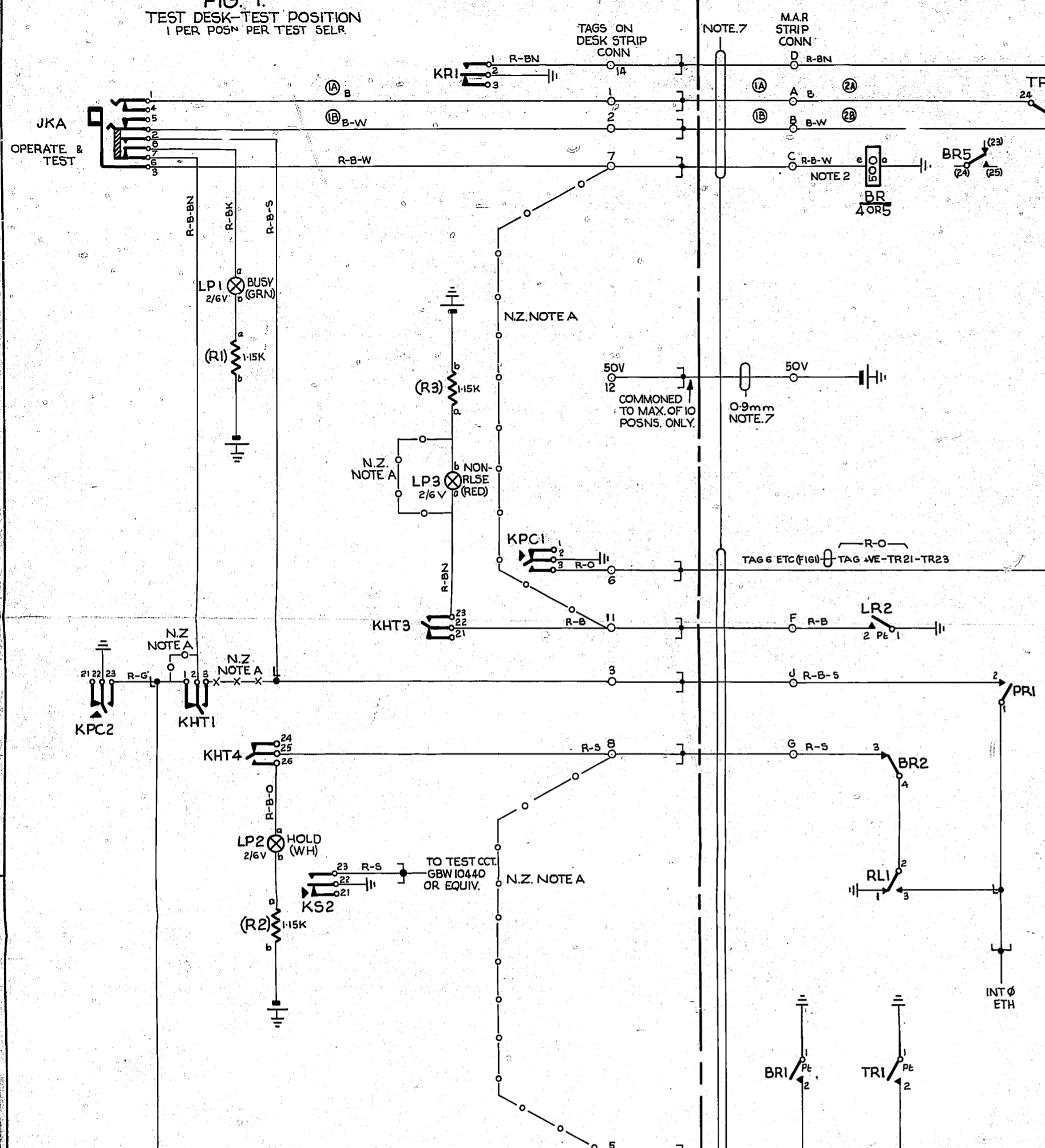


FIG. 1
TEST DESK-TEST POSITION
1 PER POSM PER TEST SELR



EXPLAN. ONLY
PART OF NIGHT ALM.
CCT. MISC. SECTION GBW
11440 OR EQUIV.

FIG. 5
TEST DESK-TEST POSM
1 PER POSM PER TEST SELR
RURAL TEST FOR ETH RUN
SEE FIG. 1

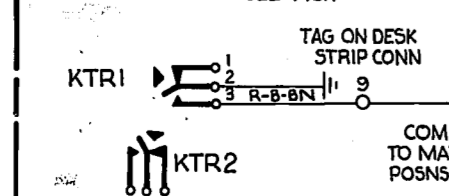


FIG. 4
M.A.R.
RURAL TEST
NOTE. 6

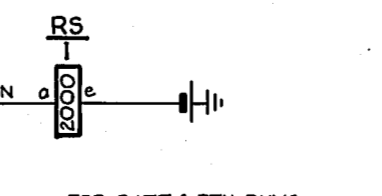
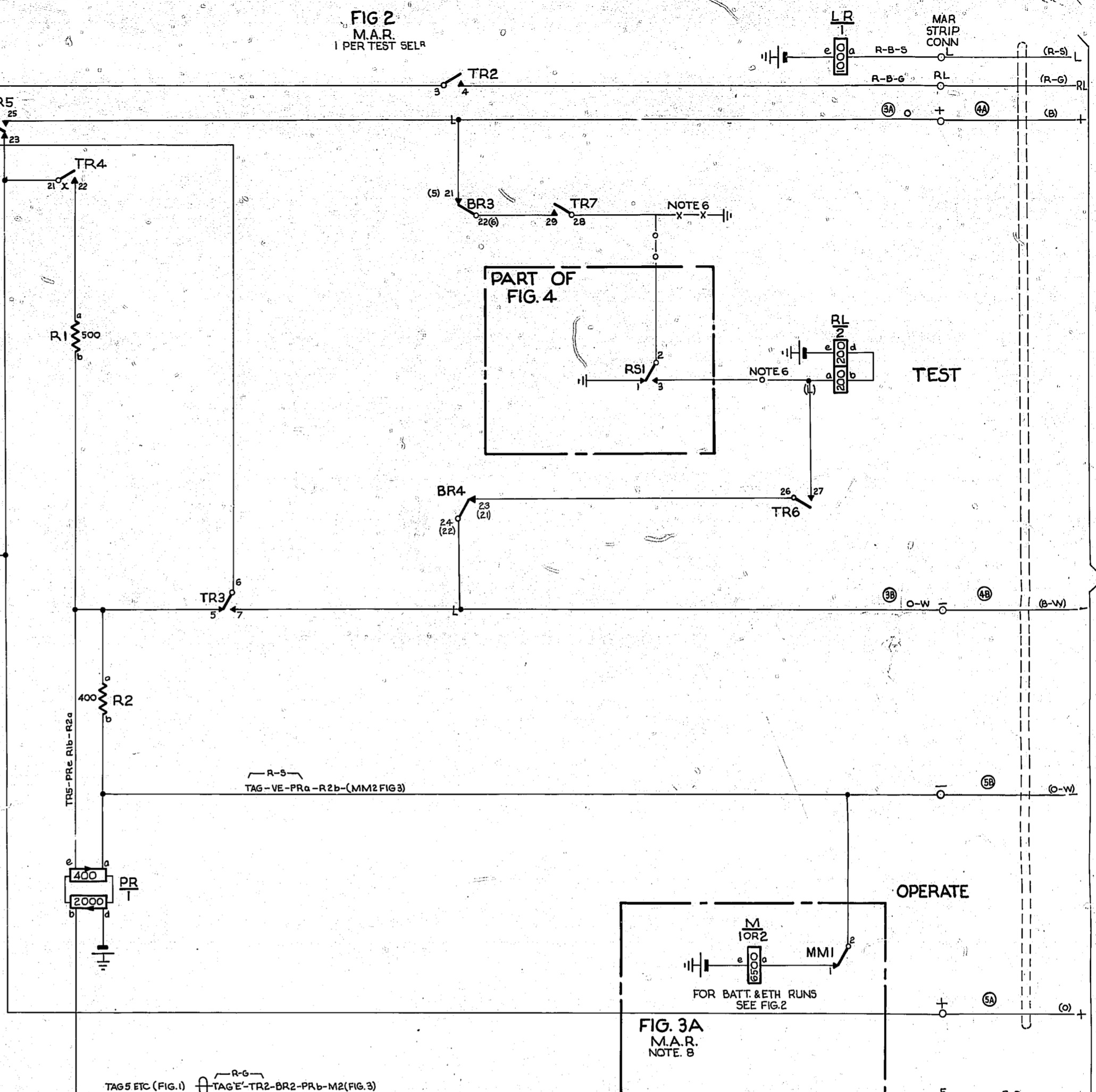


FIG. 2
M.A.R.
1 PER TEST SELR



PART OF FIG. 4

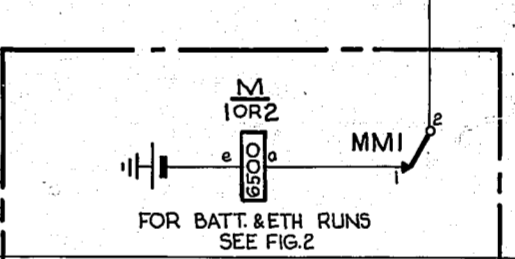


FIG. 3A
M.A.R.
NOTE. 8

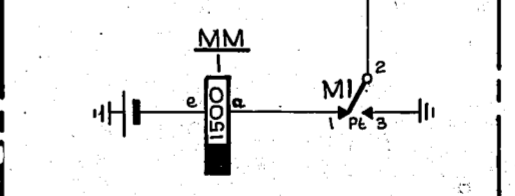
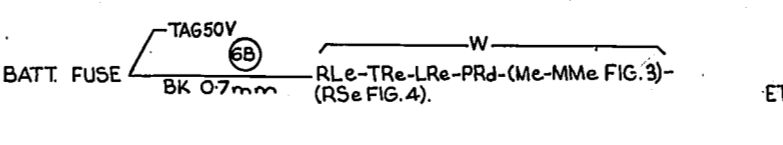


FIG. 3B
M.A.R.
NOTE. 8

- NOTES**
- FUSE-1.5A PER IO POSITIONS PER DISTRIBUTION CCT.
 - WHEN CCT. IS CONVERTED FROM GBW 11430 BR/5 IS USED AND SPRING DESIGNATIONS IN BRACKETS APPLY.
 - LEAD 'E' IS REQUIRED ONLY WHEN CIRCUIT IS CONNECTED TO LOCAL SWITCHING CONTROL CIRCUIT OR IF GBW 15320 FIG. 3 OR EQUIV. IS PROVIDED.
 - ALL WIRING TO BE 0.5mm UNLESS OTHERWISE SPECIFIED.
 - Ø FOR WIRING SEE GBW 10690 OR EQUIV.
 - WHEN FIG. 4 IS PROVIDED INSERT WIRING SHOWN THUS -o- & DELETE WIRING SHOWN THUS -x- WHEN FIG. 4 IS NOT PROVIDED INSERT WIRING SHOWN THUS -x- & DELETE WIRING SHOWN THUS -o-.
 - WHEN TEST DESK IS LOCATED REMOTE FROM AUTO EQUIPMENT THESE LEADS MAY BE CABLED VIA THE M.D.F. OR I.D.F.
 - WHEN SWITCHING CONTROL OF REMOTE TEST SELR IS REQ'D FIG. 3A IS PROVIDED AT ALL CONTROLLING EXCHANGES. IN ADDITION FIG. 3B IS PROVIDED AT INTERMEDIATE CONTROLLING EXCHANGES.

N.Z. NOTES
A. WHEN FIG. 1 IS USED WITH IZA-2TSTOTAL XC73795 PROVIDE WIRING SHOWN THUS -o- & DELETE WIRING SHOWN THUS -x- CONNECTIONS ARE NOT REQUIRED TO DESK TAGS 4, 8, 11 & 14.



TO TEST SELR DIRECT OR VIA I.D.F. LOCAL (WHEN SPEC'D) OR TO SWITCHING CONTROL CCT. OR TO JUNCTION TO REMOTE EXCHANGE VIA M.D.F. DIRECTOR VIA I.D.F. LOCAL (WHEN SPEC'D)

SUPERSEDED BY GBW 11432

STEP (KS)	RELEASE (KR)	PRIVATE CONTROL (KPC)	HOLD & TEST (KHT)	RURAL TEST (KTR)
2	2	4	2	

TEST DESK LINES TO TEST SELECTOR			
MINOR CORRECTIONS	(193970)	5 B	15-1079 RED
N.Z. NOTE A ADD. METRICATED.	(193799)	5 A	25-1079
REPLACEMENT TCG	(122075)	5	25-97
AMENDMENT PARTICULARS	ISSUE DATE	EF:	SIZE A1 50V H
N.Z. P.O.	DRAWN	CHECKED	WIRING
	J B		CIRCUIT
GBW 11431			