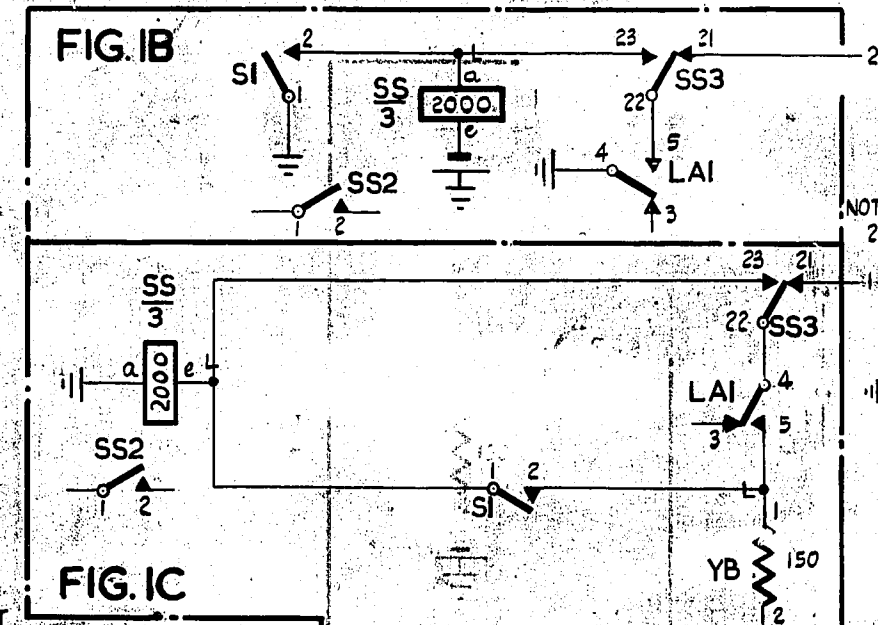
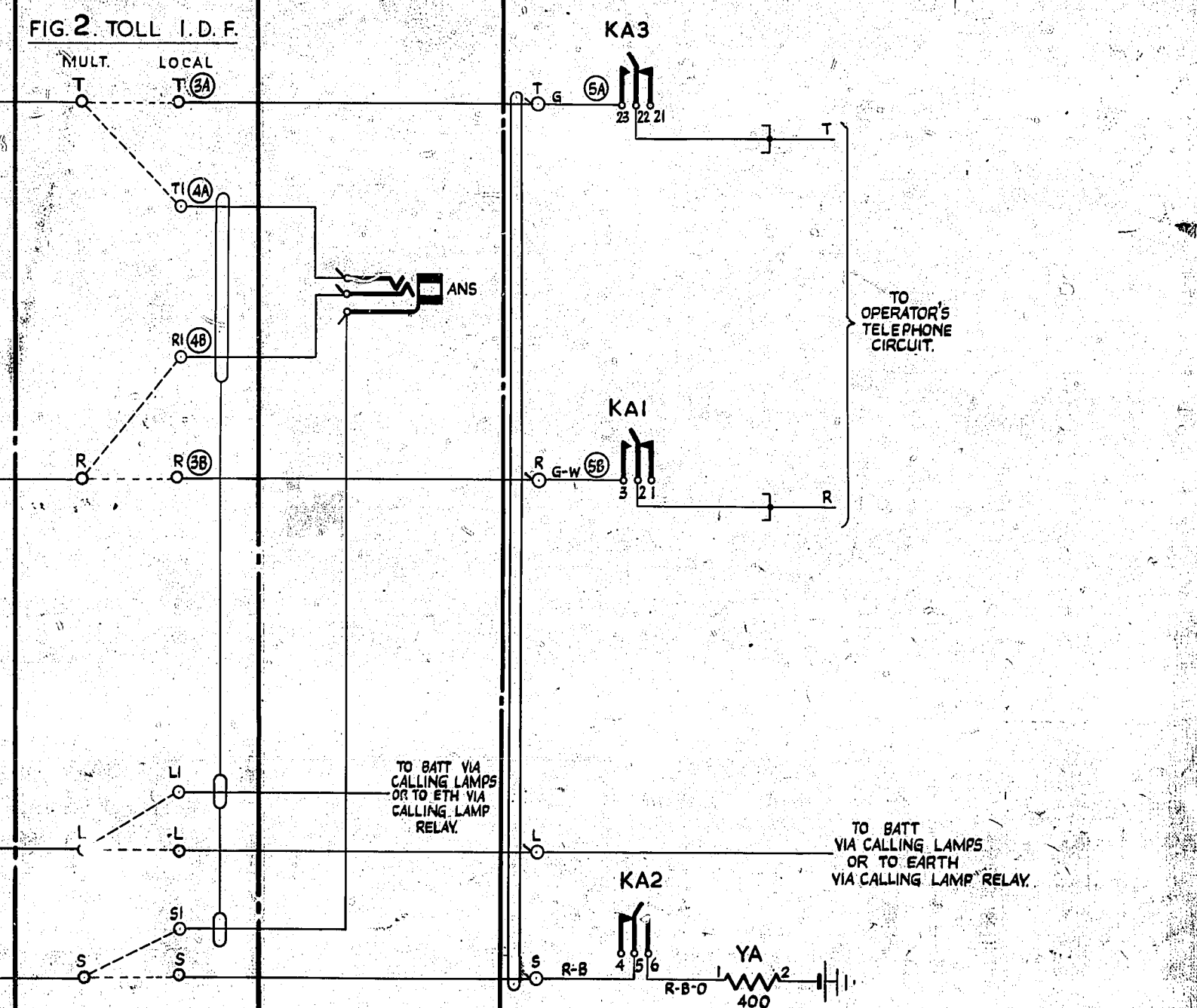
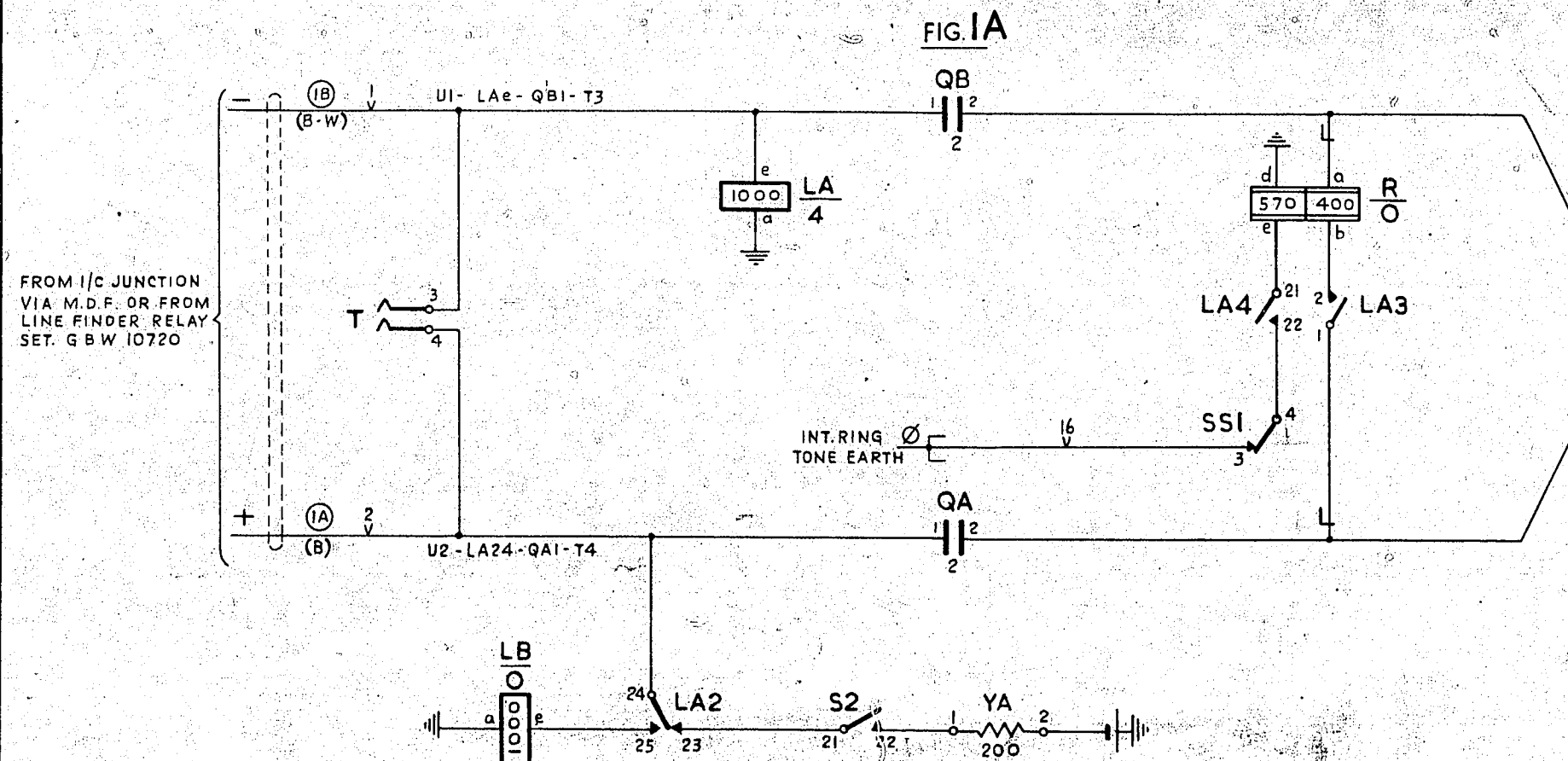


0  
5 Centimetres  
10  
15  
20  
25  
30



**NOTES**

1. FUSING FIG. 1A & 1B OR FIG. 1A & 1C 1.5A PER RELAY SET  
FIG. 3 1.5A PER 10 CIRCUITS.
2. WHEN BATTERY CONNECTED CALLING LAMPS ARE FITTED SPECIFY FIGS 1A & 1B & CONNECTIONS—2— WHEN EARTH CONNECTED CALLING LAMP RELAYS ARE FITTED SPECIFY FIGS 1A & 1C & CONNECTIONS—1—
3. THIS CIRCUIT IS USED IN ASSOCIATION WITH CHANGED NUMBER TAPPING CIRCUITS GBW 10720 ONLY.

|              |           |                          |
|--------------|-----------|--------------------------|
| FIGS 1A & 1B | BATTERY W | U12-SSe-YA2              |
|              | EARTH R   | U11-Rd-LAa-LA4-SA-S1-LBa |
| FIGS 1A & 1C | BATTERY W | U12-YA2-YB2              |
|              | EARTH R   | U11-Rd-LAa-Sa-SSa-LBa    |

MANUAL BOARD  
EXPLANATORY ONLY

**FIG. 3**  
DIRECTORY SERVICE DESK

|   |       |                    |                                       |
|---|-------|--------------------|---------------------------------------|
| NOT TO BE USED FOR NEW WORK                       |       | CHANGED NUMBER     |                                       |
|   |       | CALLING EQUIPMENT. |                                       |
| LA & FIGS 1B & 1C AMENDED (54972)                 |       | 3                  | 23.11.62 D.B.H.                       |
| CCT. REVISED FIGS 1B, 1C, 3 AND NOTES 2 & 3 ADDED |       | 2                  |                                       |
| AMENDMENT PARTICULARS.                            |       | ISSUE DATE         | APPD. REF: GEC DRG. SW8298 MOD' 50V E |
|   |       | SIZE               | M                                     |
| NZPO  | DRAWN | CHECKED            | WIRED                                 |
|   |       |                    | ENGINEER                              |
| <b>GBW 11390</b>                                  |       |                    |                                       |