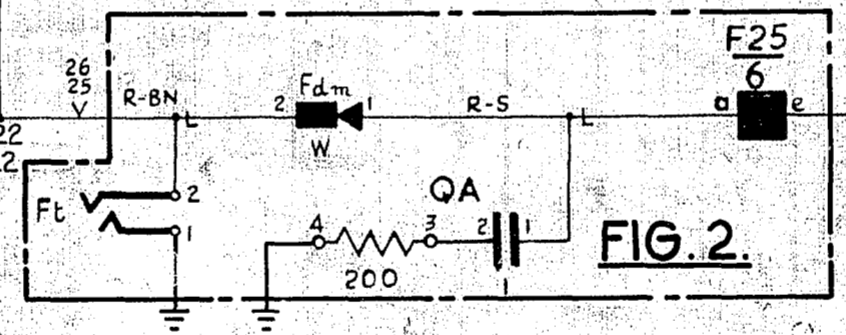
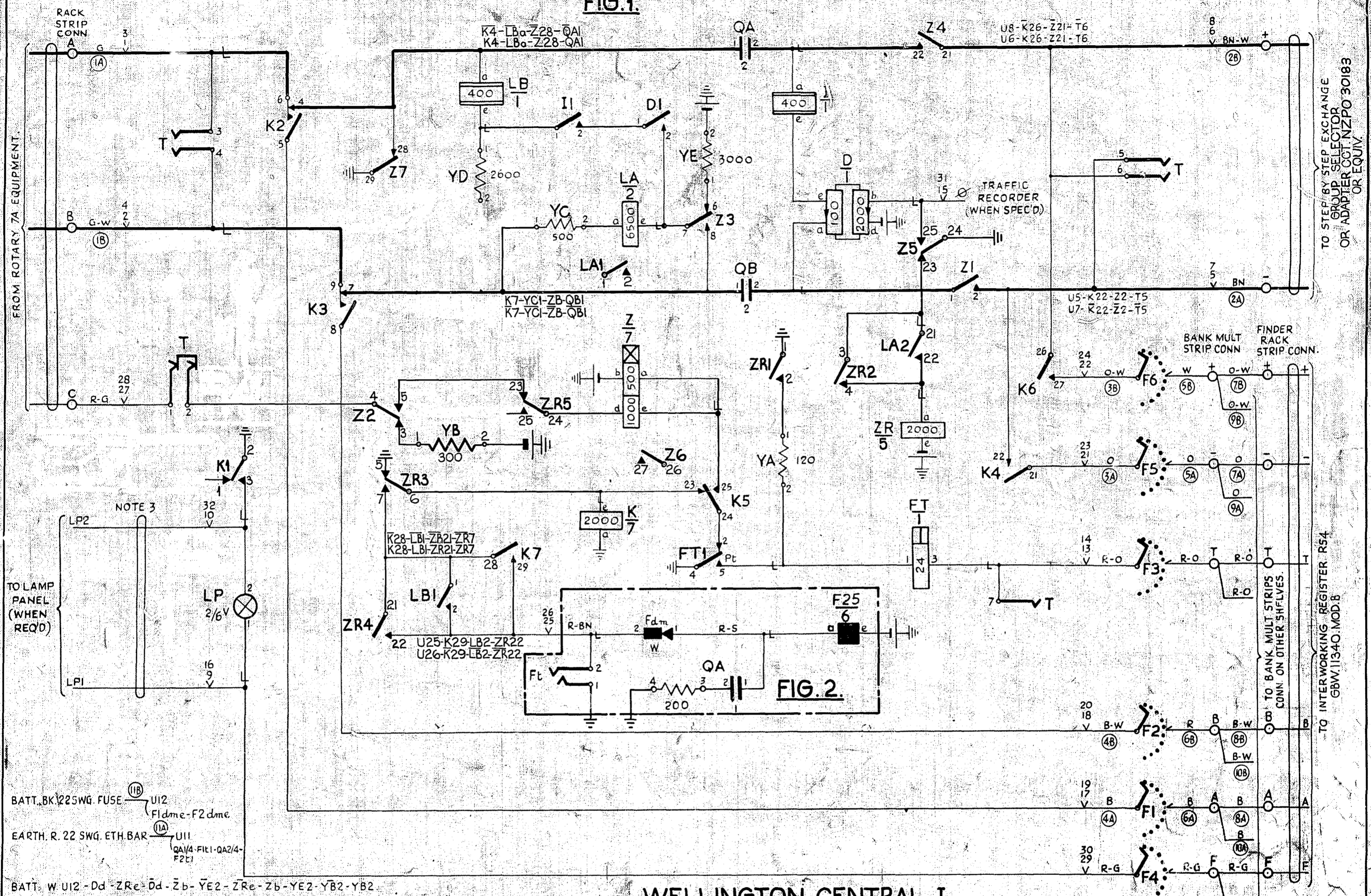


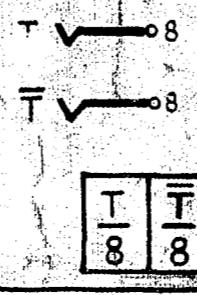
FIG. 1



BATT. BK 22 SWG. FUSE  $\text{UI2}$   
 F1dme-F2dme  
 EARTH R. 22 SWG. ETH. BAR  $\text{UI1}$   
 QA/4-F1/1-QA2/4-F2/1

BATT. W  $\text{UI2-Dd-ZRe-Dd-Zb-YE2-ZRe-Zb-YE2-YB2-YB2}$   
 EARTH R.  $\text{UI1-Ka-K2-ZR5-ZR1-Ra-R2-FT4-Z24-Z29-ZR5-ZR1-FT4-Z24-Z29}$

- NOTES.**
1. FUSING - 1.5A PER RELAY SET (2 CIRCUITS) AND ASSOCIATED UNISELECTORS
  2. ALL WIRING TO BE 25 SWG. UNLESS OTHERWISE SPECIFIED.
  3. THESE LEADS WILL BE CABLED BY THE CUSTOMER WHEN LOCAL CIRCUMSTANCES NECESSITATE THE PROVISION OF A REMOTE LAMP PANEL, IN WHICH CASE THE RELAY SET LAMPS WILL BE REMOVED
  4. THIS MODIFIED VERSION OF GBW 11330 IS PROVIDED WHEN THE ROTARY TO SIXX ROUTE IS ACCESSIBLE TO BOTH LOCAL AND INCOMING ROTARY SECOND G.S.



WELLINGTON CENTRAL I  
 2<sup>ND</sup> G.S. LEVELS ONLY

AMENDMENT PARTICULARS	ISSUE	DATE	APPE
K1 SPRINGSET WIRING CHANGED. I.S. 32/87. ADD 12.	(68378)	C.	20.8.65 A.G.
REDRAWN CCT CLARIFIED MADE MOD A	(72363)	B	11.3.64 D.B.H.
TRAFFIC RECORDER CONNECTION ADDED.	4	3.1.58	LAG.
NOTE 3 & CONNECTIONS TO LAMP PANEL ADDED.	3		
CONDENSER QA WAS 5 + 5 μF WITH INHERENT RESISTANCE	2		
	1		
	CE 393/3/58		
DRAWN	CHECKED	WIRING	ENGINEER
NZPO			

SLOW RELEASE     SLOW OPERATE

**INTERWORKING RELAY SET**  
 TYPE RS. 3  
 7A ROTARY TO STEP BY STEP

REF: ST & C DRG. LR2092    SIZE S    50V    E.

**GBW 11330 MOD A**  
 (NOTE 4)

TO STEP BY STEP EXCHANGE  
 GROUP SELECTOR  
 OR ADAPTER COT NZPO 30183  
 OR EQUIV.

TO INTERWORKING REGISTER R54  
 GBW 11340 MOD B

BANK MULT STRIP CONN  
 FINDER RACK STRIP CONN.

TO BANK MULT STRIPS  
 CONN. ON OTHER SNFLVES.