

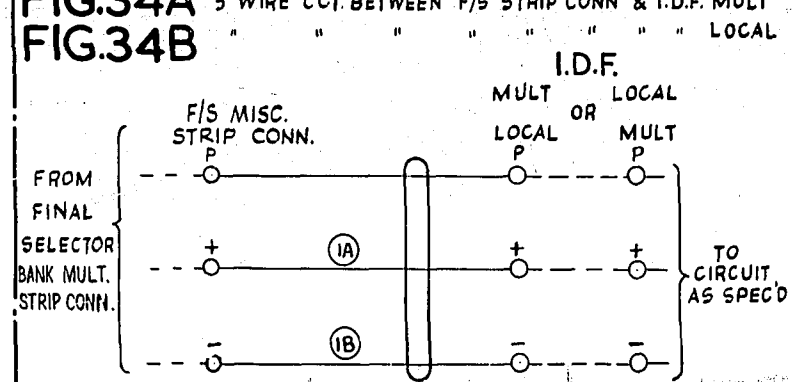
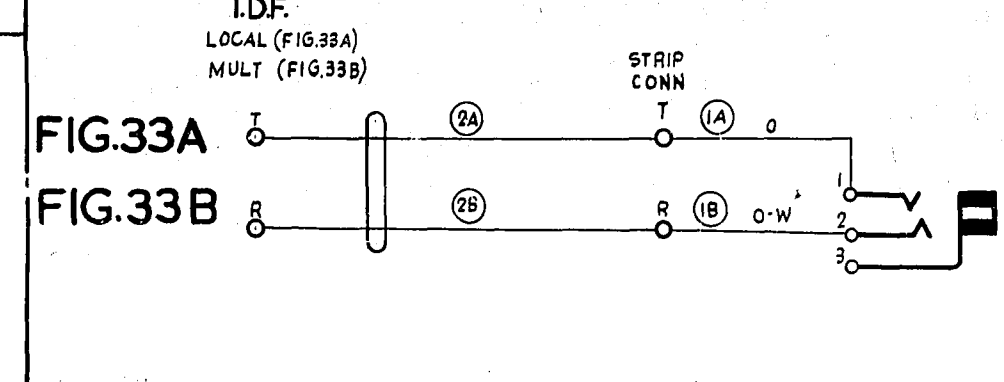
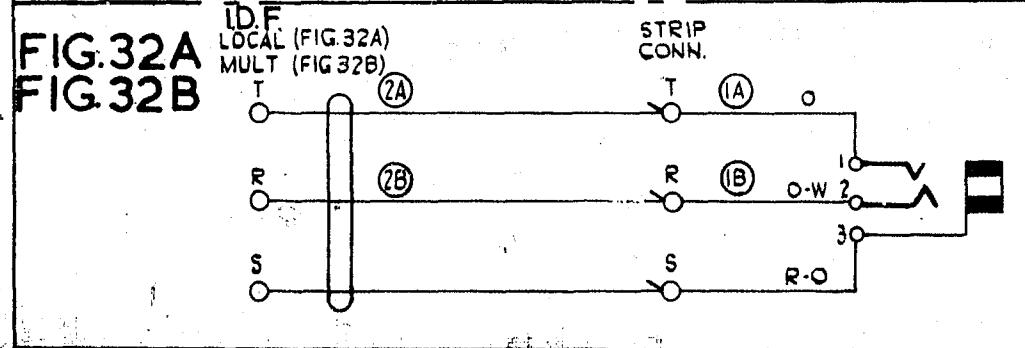
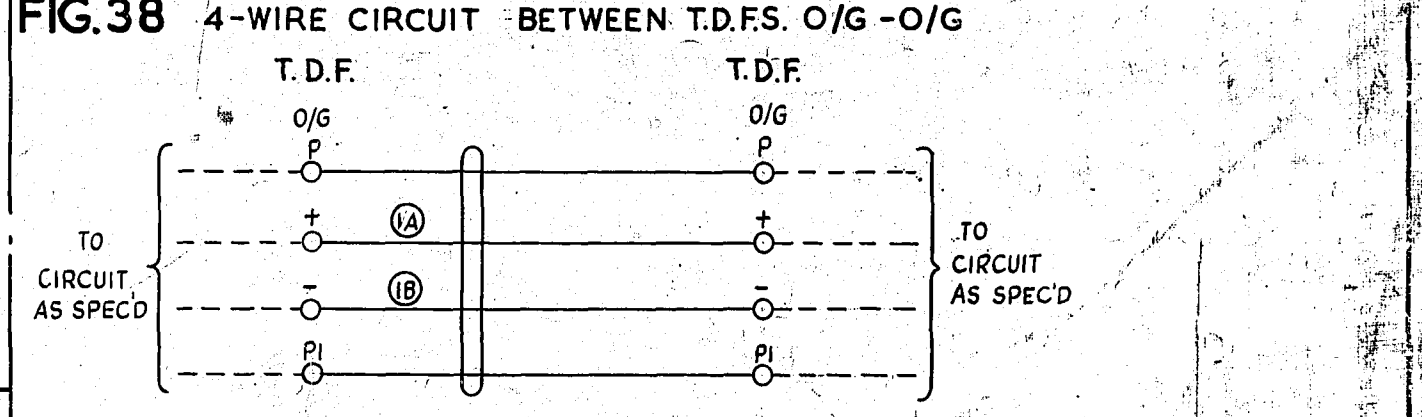
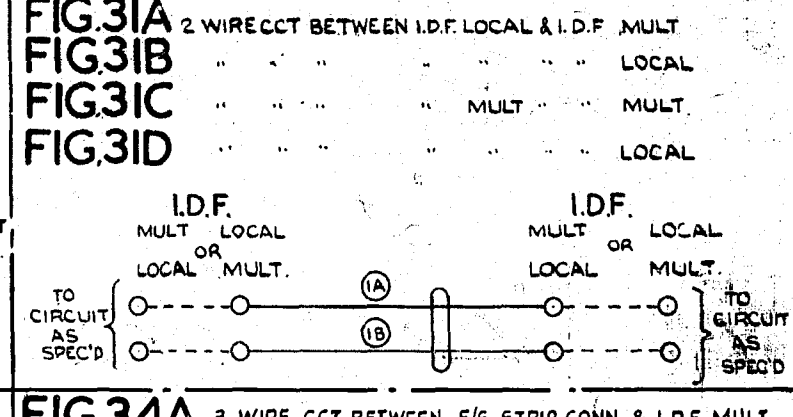
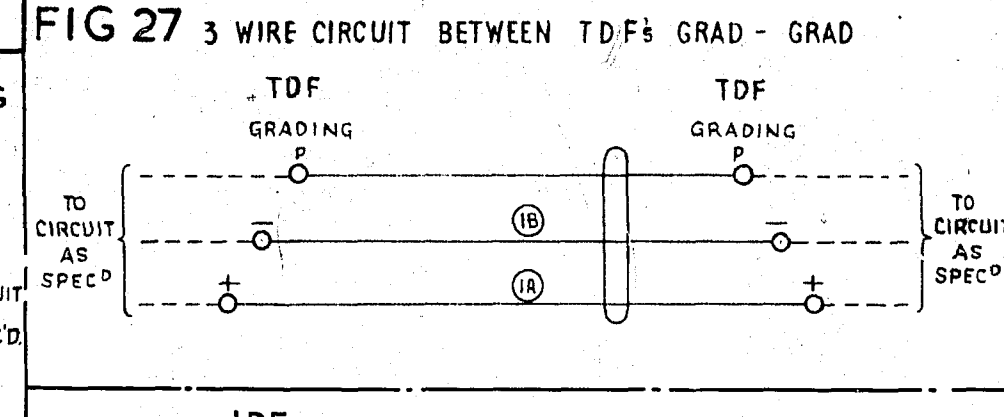
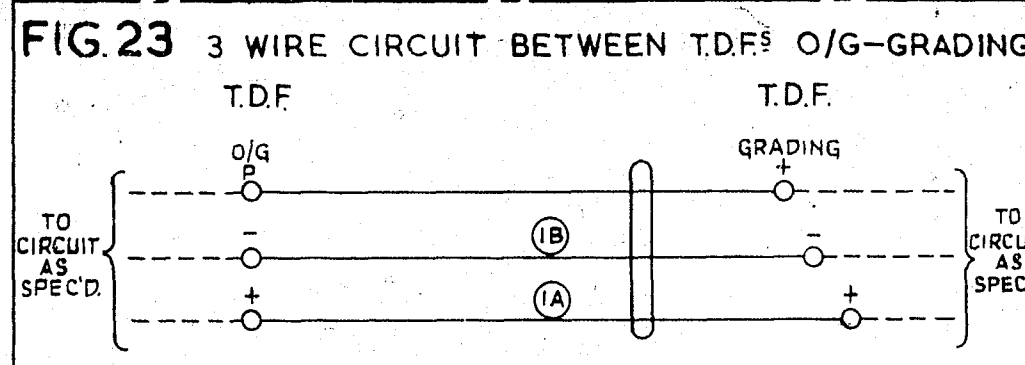
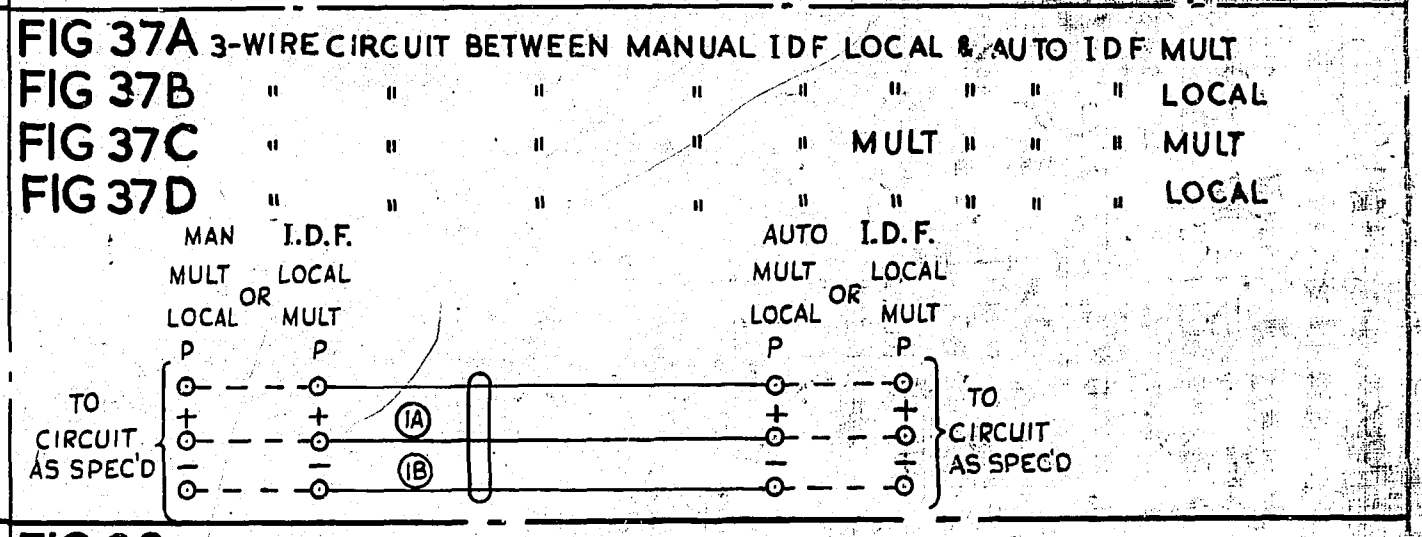
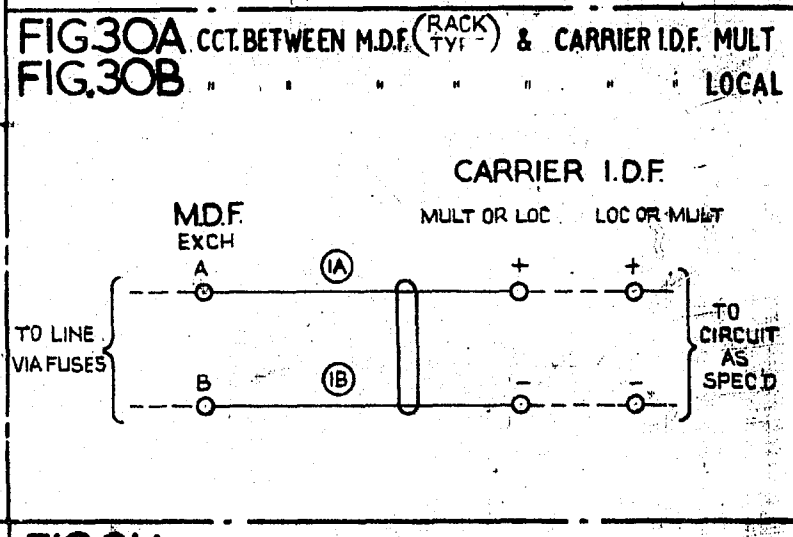
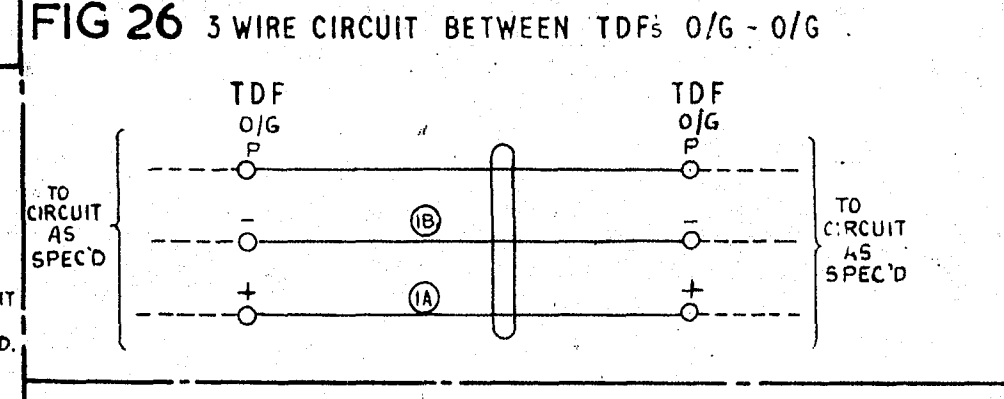
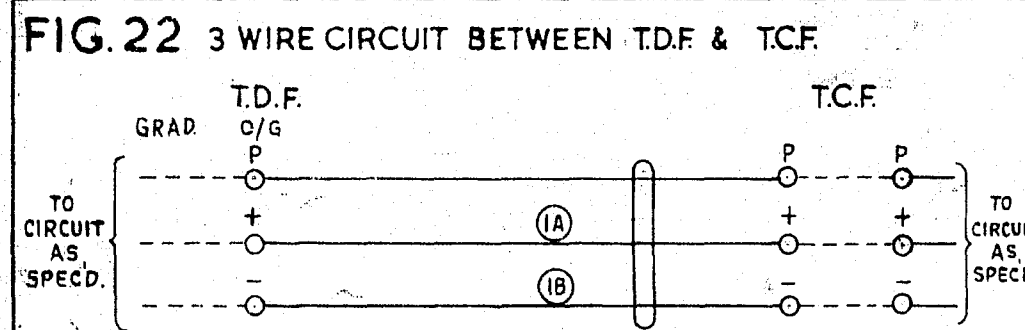
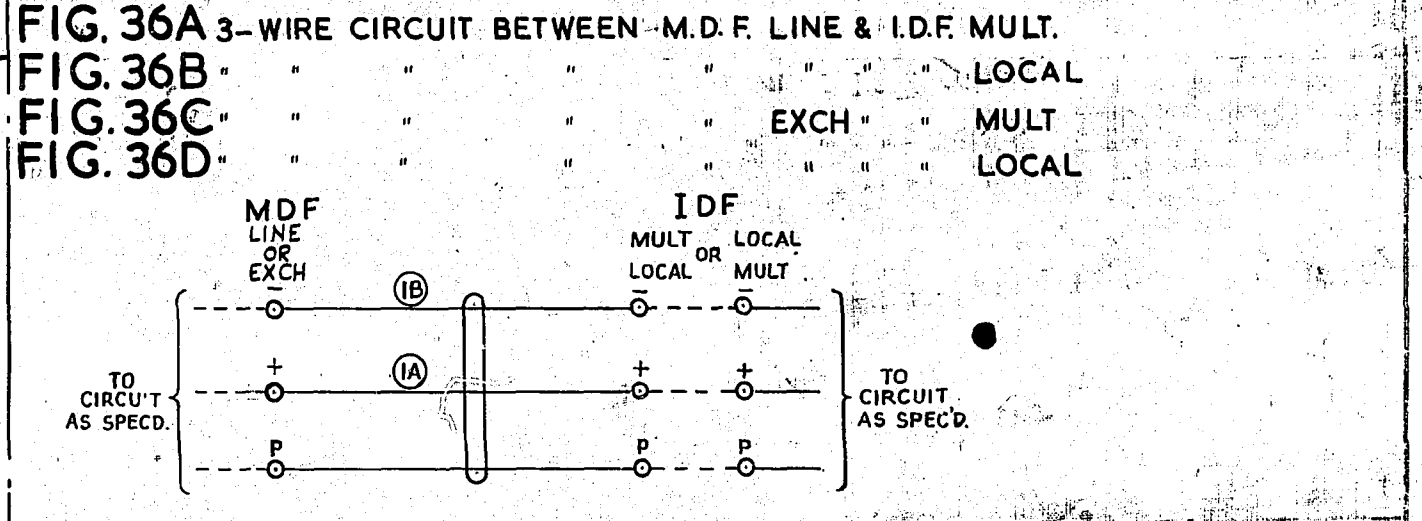
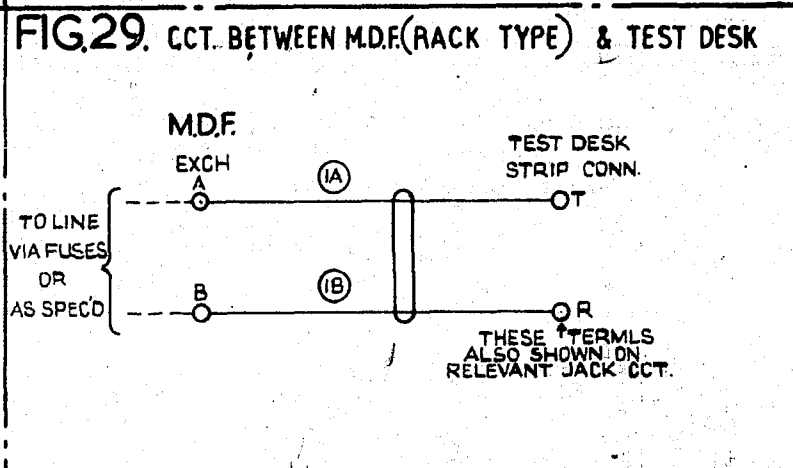
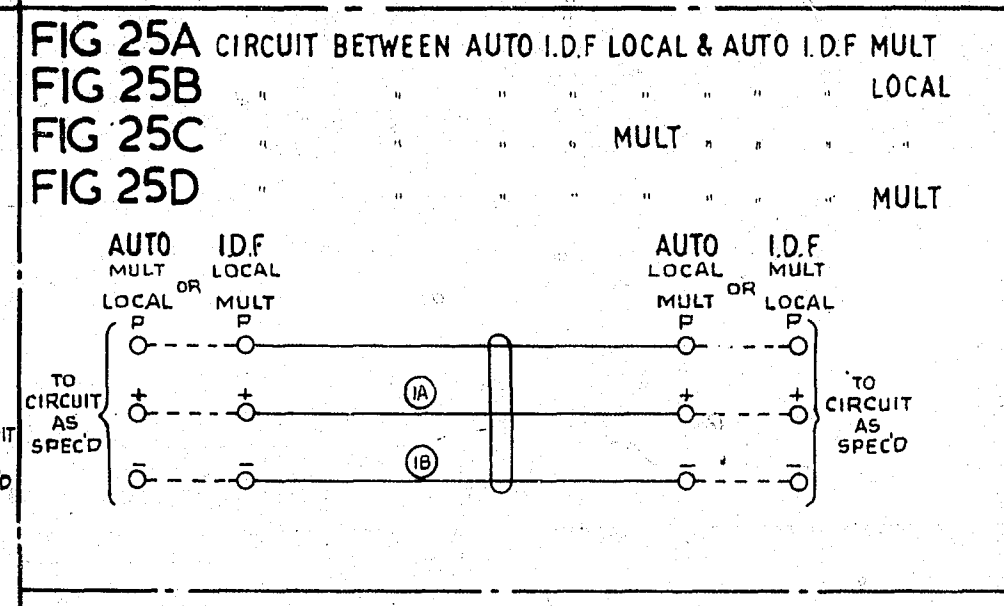
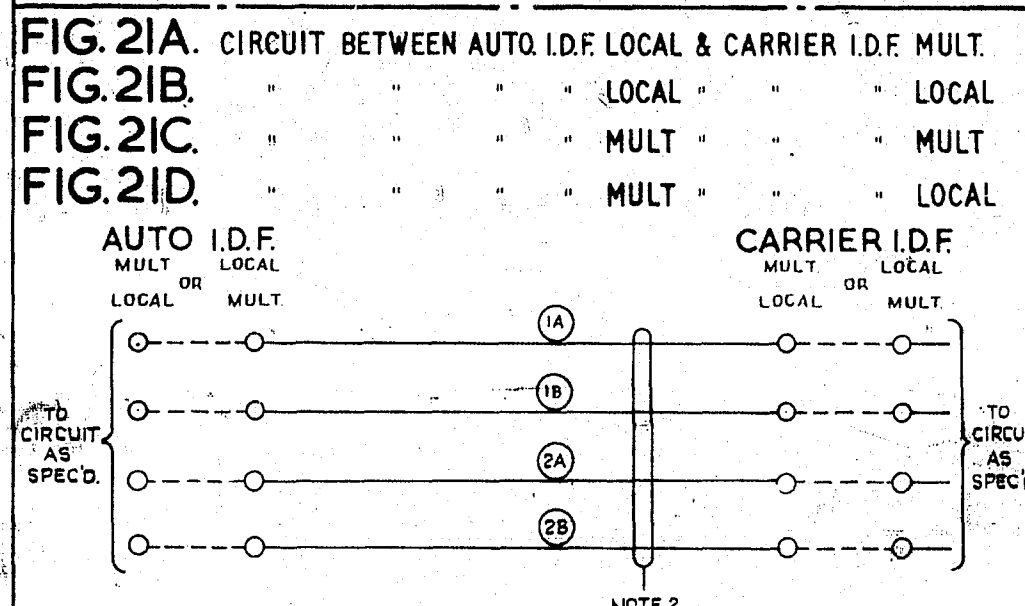
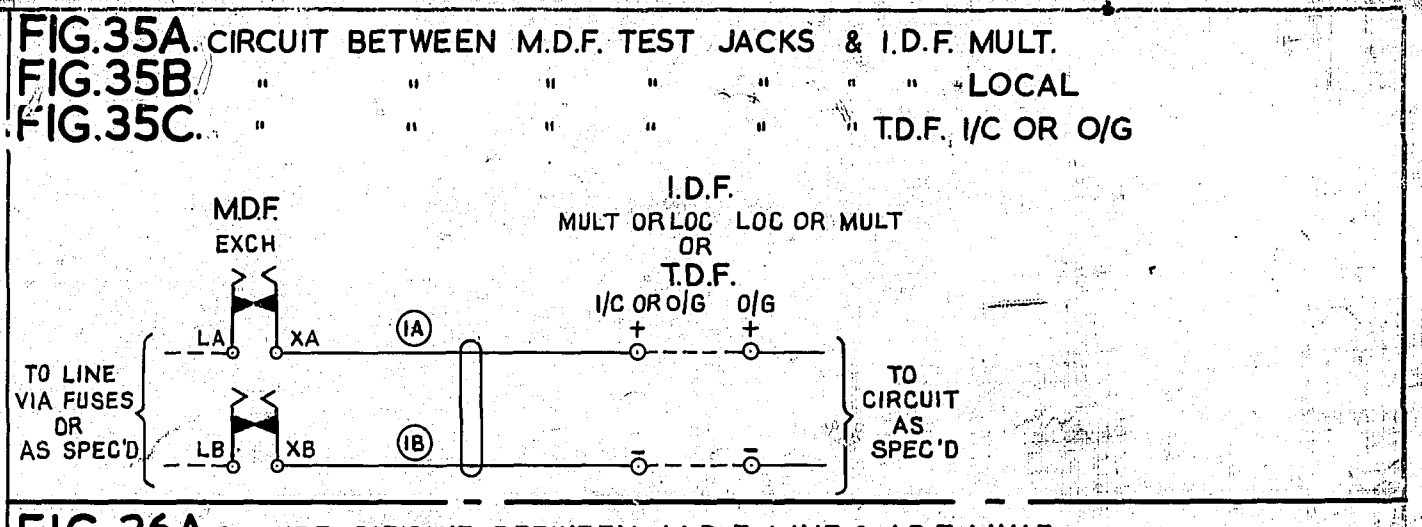
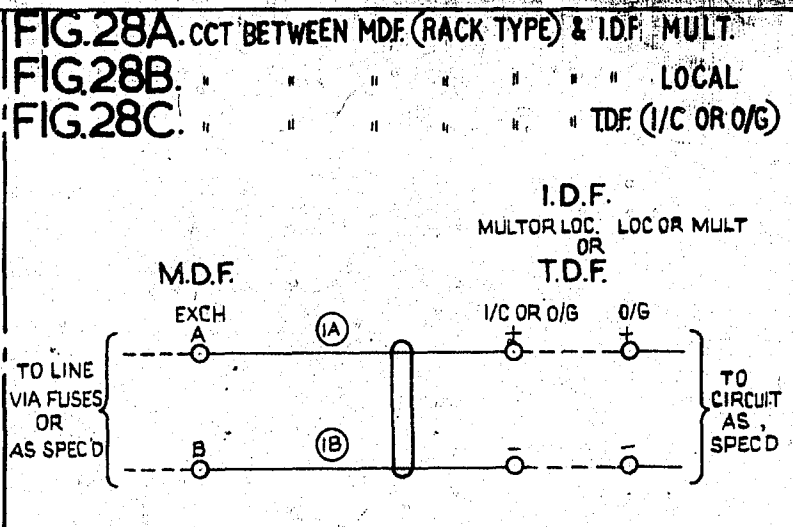
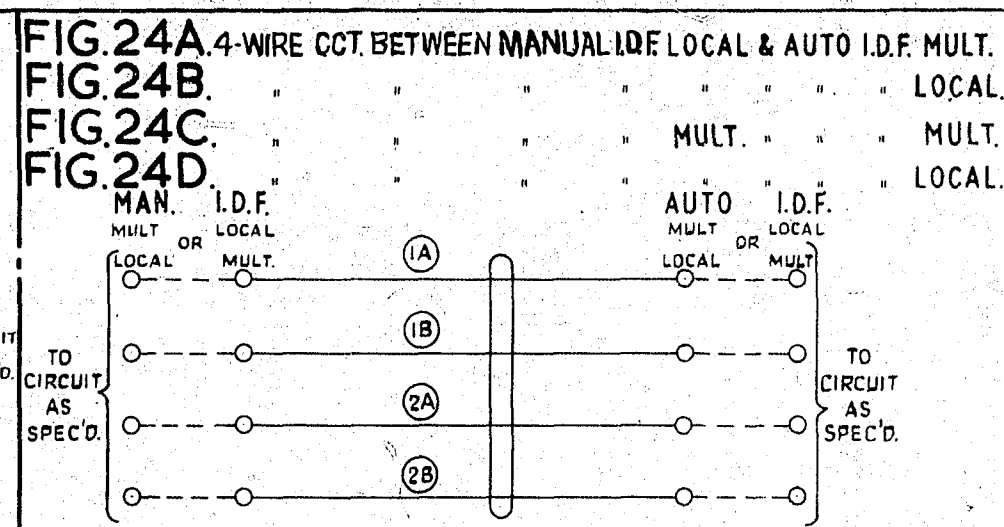
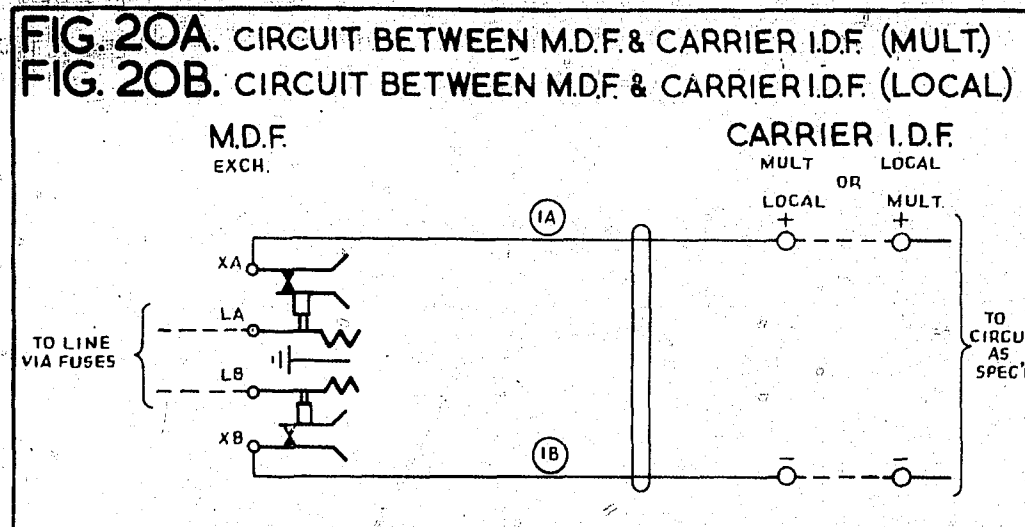
PROOF

A 18.7.80	L.N. 17099	WAN RM	RED CK	RETRACED & METRICATED
ISS DATE		DEL. DC ORDER		CHANGE
DRNT - EQPT		CKD		ORIGIN T - EQPT
TCD L.N.		APPD		STANDARD ATW 22001
NZPO ENGINEER - IN - CHIEF, WELLINGTON				
SHT 1 OF 2		SIZE A2		
CRW 11200				

MISCELLANEOUS JACK
CCTS & MISCELLANEOUS
CIRCUITS BETWEEN FRAMES

UD 236

0
5 Centimetres
10
15
20
25
30



AMENDMENT PARTICULARS	ISSUE	DATE	APPRD	SIZE	L	50	E
FIG. 38 ADDED	(13169)	21	15.1.70	RW			
FIGS 36 C & D ADDED		20					
FIGS 37A, B, C & D ADDED		19					
FIGS 36 A & B ADDED		18					
FIGS 35A, B & C ADDED		17					
NO CHANGE ISSUE ADVANCED ONLY.		16					
FIGS 33 & 34 ADDED		15					

MISCELLANEOUS JACK CIRCUITS & MISCELLANEOUS CIRCUITS BETWEEN FRAMES

NZPO DRAWN CHECKED WIRING ENGR'S