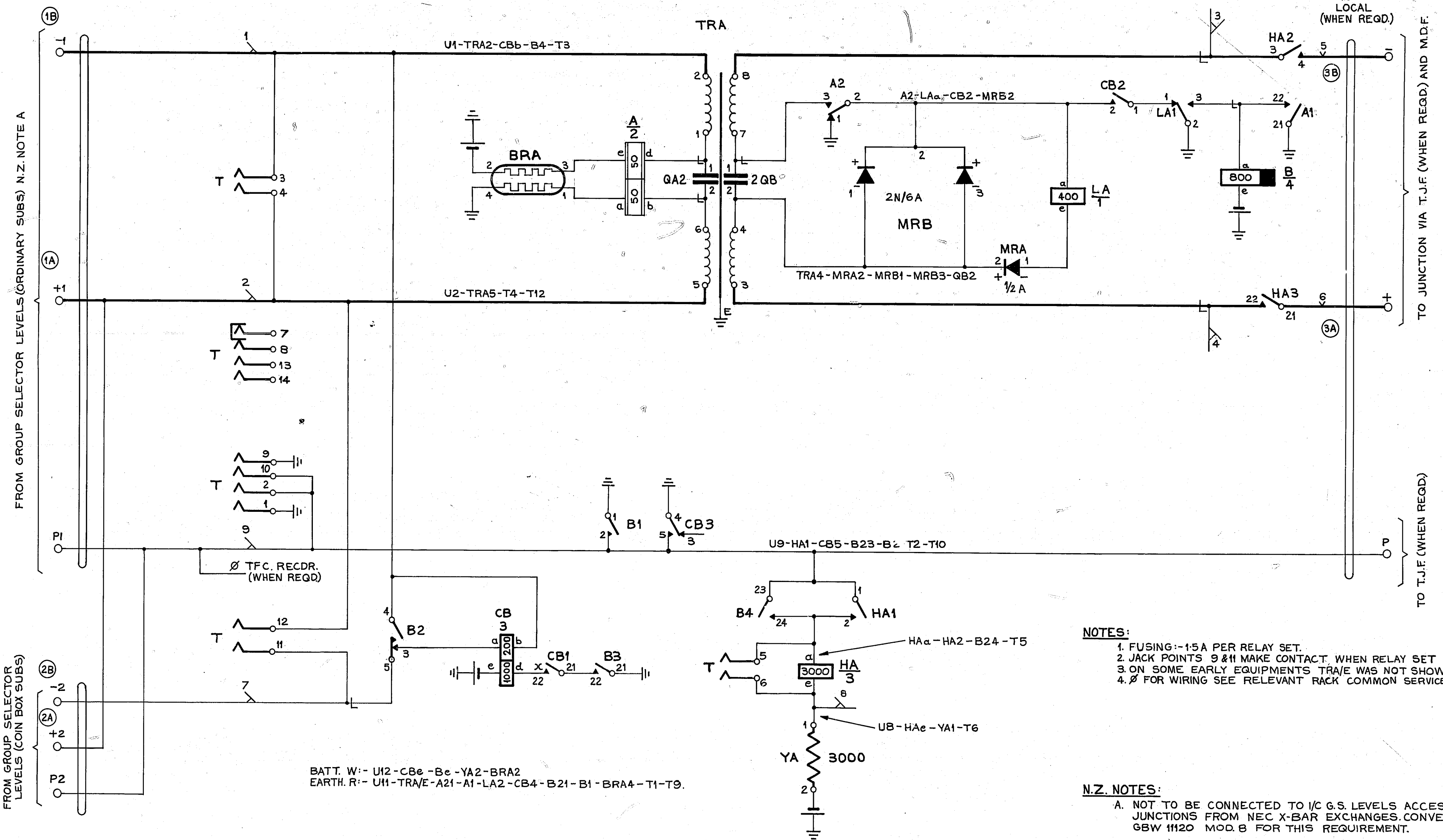


T.D.F. O/G
OR I.D.F. MULT.



BATT. W:- U12-CBe-Be-YA2-BRA2
EARTH. R:- U1-TRA/E-A21-A1-LA2-CB4-B21-B1-BRA4-T1-T9.

NOTES:

1. FUSING:-1.5A PER RELAY SET.
2. JACK POINTS 9 & 11 MAKE CONTACT WHEN RELAY SET IS REMOVED.
3. ON SOME EARLY EQUIPMENTS TRA/E WAS NOT SHOWN IN ETH. RUN.
4. Ø FOR WIRING SEE RELEVANT RACK COMMON SERVICES DIAG.

N.Z. NOTES:

A. NOT TO BE CONNECTED TO I/C G.S. LEVELS ACCESSIBLE FROM JUNCTIONS FROM NEC X-BAR EXCHANGES. CONVERT TO GBW 11120 MOD. B FOR THIS REQUIREMENT.

		T 14		SLOW RELEASE		SLOW OPERATE	
JUNCTION RELAY SET O/G TO TOLL BOARD (FOR ORDINARY & COIN BOX SUBS) 2000 TYPE.							
RETRACED	(157689)	4 B	6-9-78	R.E.D.			
N.Z. NOTE ADDED.	(68486)	4 A	22-7-75	B.S.H.			
DESIGNATION OF INCOMING TERMINALS AMD (48611)	4	13-12-61	KGH				
AMENDMENT PARTICULARS		ISSUE	DATE	APPD			
		SIZE	A2	50V	G		
NZPO				GBW 11120			