

0
5 Centimetres
10
15
20
25
30

FIG. 1A LATE CHOICE CALL METER (LCCM) & LATE CHOICE UNIT METER (LCUM)

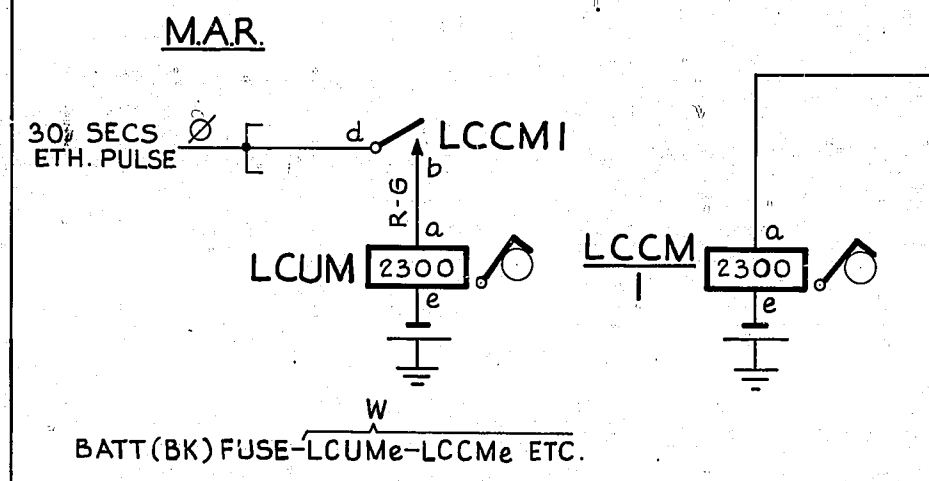


FIG. 1B MAR. (NOTE 3)

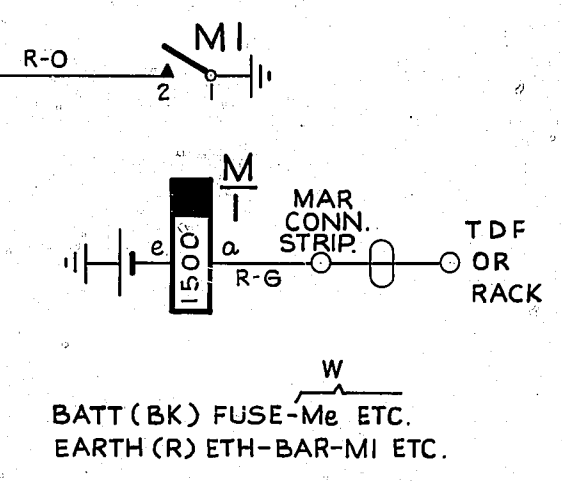


FIG. 4 GROUP OCCUPANCY METER (GOM) MAR.

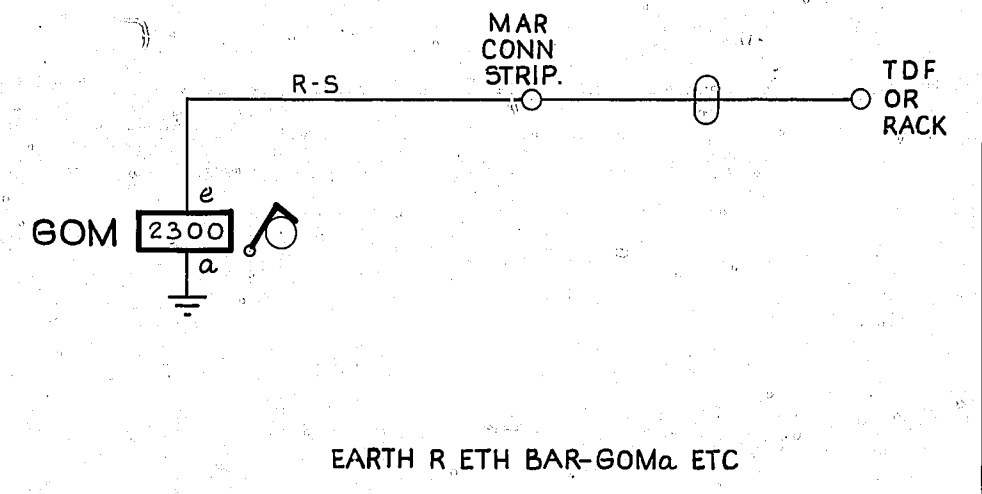


FIG. 1C MAR. (NOTE 3)

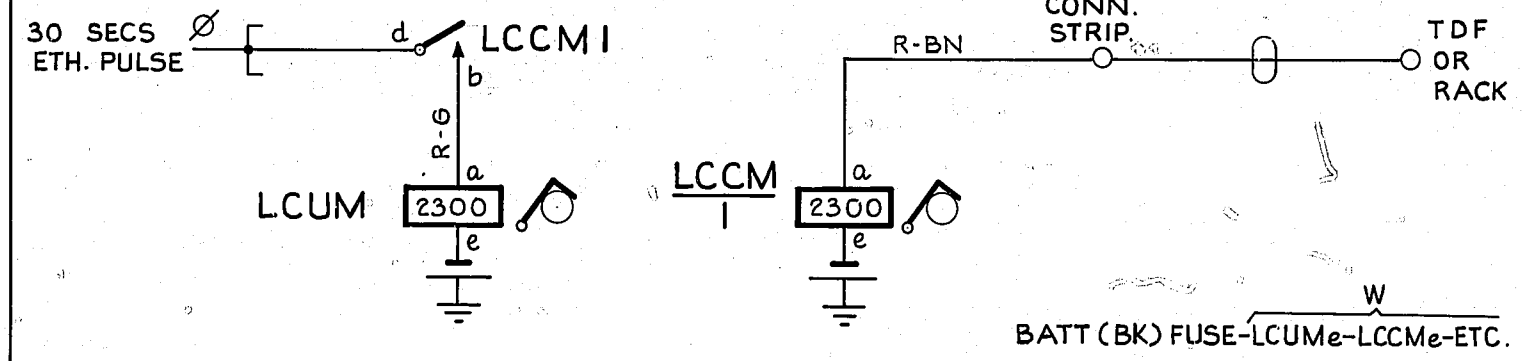


FIG. 2B OVERFLOW METER (OM) (NZ NOTE A)

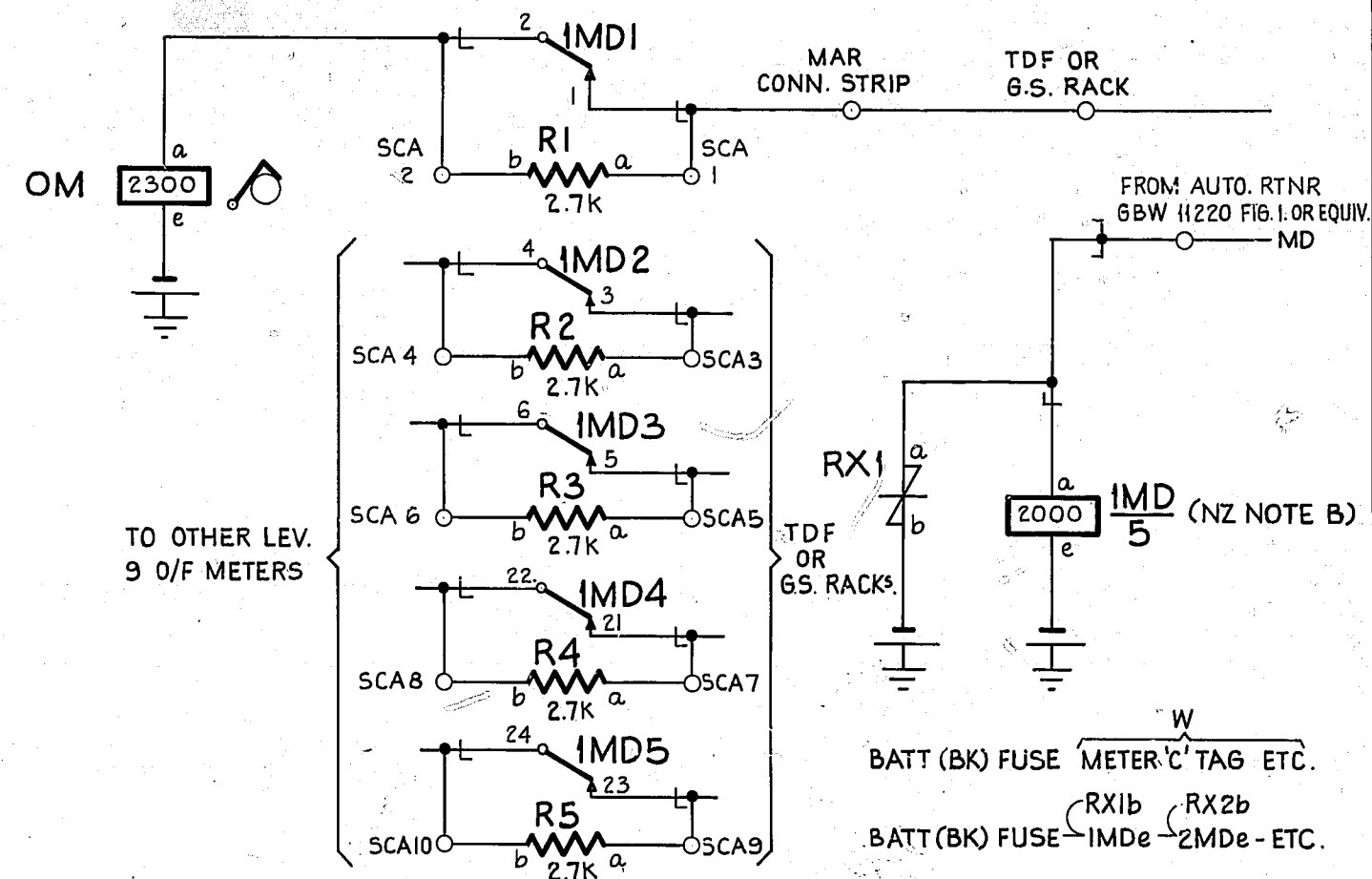


FIG. 2A CALL COUNTING METER (CCM) AUTO PEG COUNT METER (APM) OVERFLOW METER (OM)

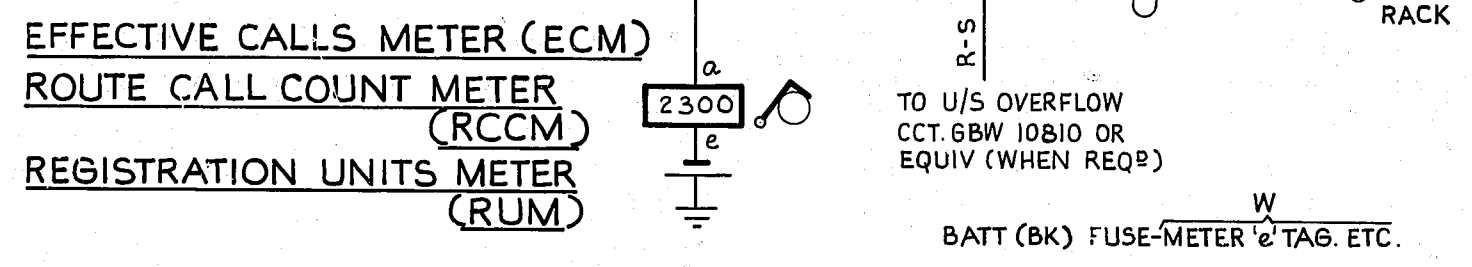


FIG. 3A GROUP OCCUPANCY TIME METER (GOTM)

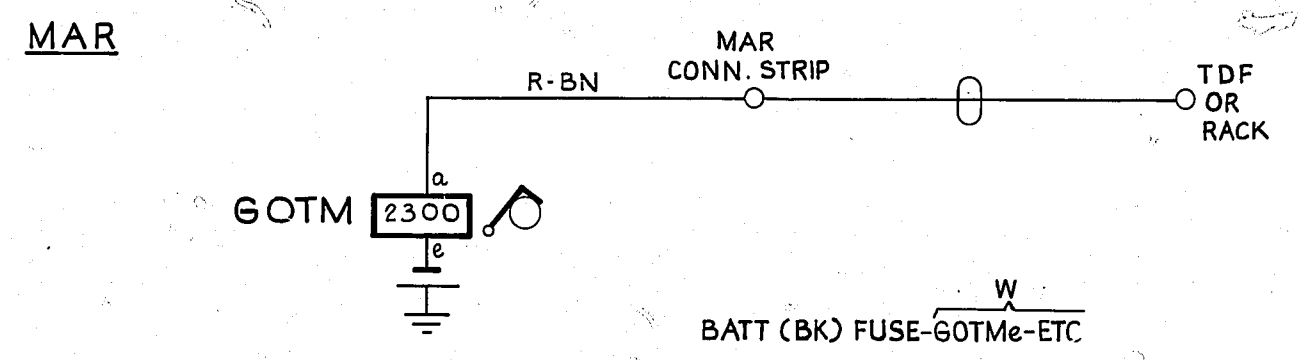
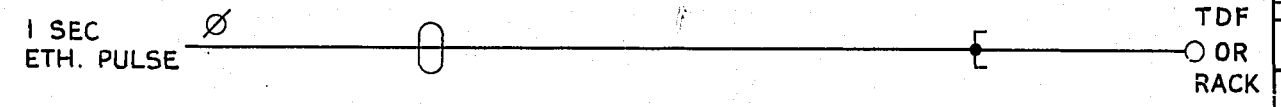


FIG. 3B

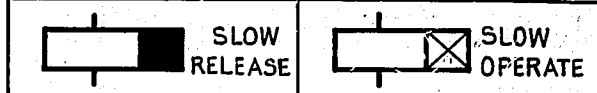


NOTES :-

1. FUSING 1.5A PER 80 METERS. FUSING 1.5A PER 40 'M' RELAYS. FUSING 1.5A 'MD' RELAYS.
2. ALL WIRING TO BE 23 SWG UNLESS OTHERWISE SPECIFIED. BATT. & EARTH LEADS TO BE 20 SWG. PLATE STRAPPING TO BE 23 OR 25 SWG.
3. 'M' RELAY ONLY REQUIRED ON CIRCUITS WITH GUARDED RELEASE FEATURE, OTHERWISE FIG. 1C TO BE USED.
4. FOR WIRING OF LEADS MARKED Ø - SEE GBW 10690 OR EQUIVALENT.

NZ NOTES :-

- A. USE FIG. 2B ON G.S. LEVEL 9 (WORKING OR SPARE) IN EXCHANGES WITH AUTOMATIC ROUTINERS, OTHERWISE FIG. 2A OF GBW 11050 TO APPLY.
- B. 'MD' RELAY(S) PROVIDED FOR LEVELS 9, 29, 39, ETC GRADINGS. LOCAL ARRANGEMENTS TO APPLY.



NZ NOTE A AMD	(43100)	1B	14-1-77	RED
RETRACED FIG. 2A WAS FIG. 2. FIG. 2B & NZ NOTES ADDED.	(122753)	1A	23.5.74	BS-H
		1	28.3.49	K.G.C.
AMENDMENT PARTICULARS		ISS	DATE	APPD
NZPO		DRAWN M.H.	CHECKED	WIRED
			ENGRS	

**AUTOMATIC EXCHANGES
TRAFFIC METER CIRCUITS**

GBW 11050

SIZE S 50V E