

0
5 Centimetres
10
15
20
25
30

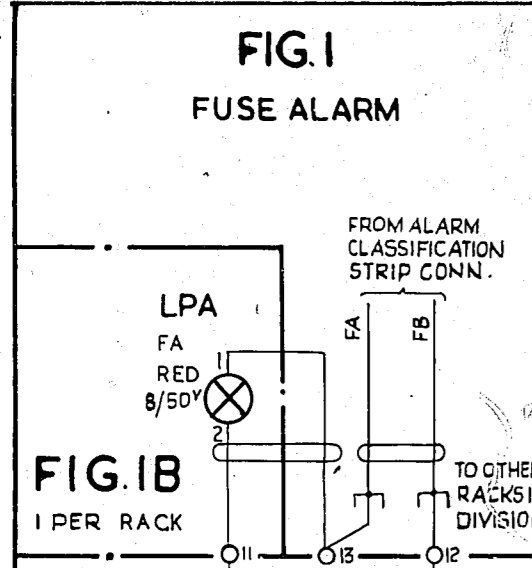


FIG. 1B
1 PER RACK

NOTE 1

- 10A PER UNISELR.
- 3·0A BATTERY JACKS.
- FAULT. ALM. LAMP. & RELAYS
- PER 60 METERS

NOT REQ'D ON ACCESS SWITCH RACKS

FIG. 1A
1 PER RACK

REF: GBW. 10990 OR EQUIV.

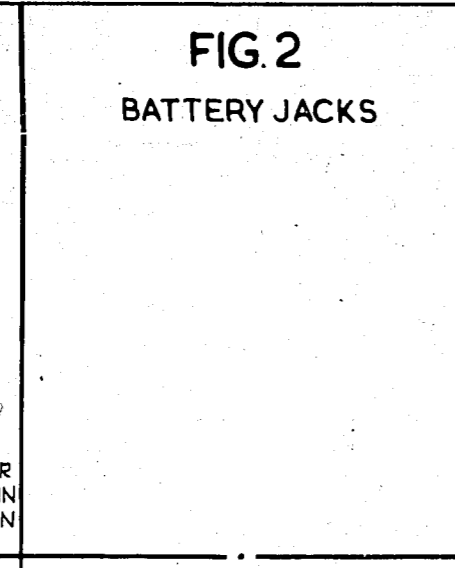


FIG. 2A
1 PER RACK

- BJC1-BJD1
- BAT-BK FUSE BJA1-BJB1
- BJC2-BJD2
- ETH-R-ETH BAR BJA2-BJB2

REF: GBW11300 OR EQUIV.

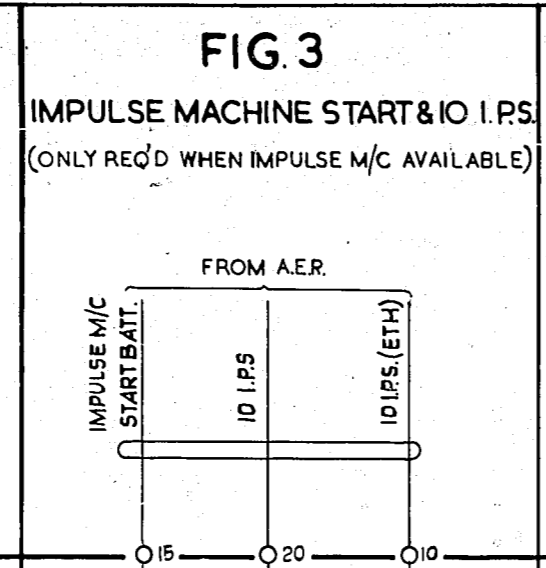


FIG. 3A
1 PER RECORDER

REF: GBW. 11030 OR EQUIV.

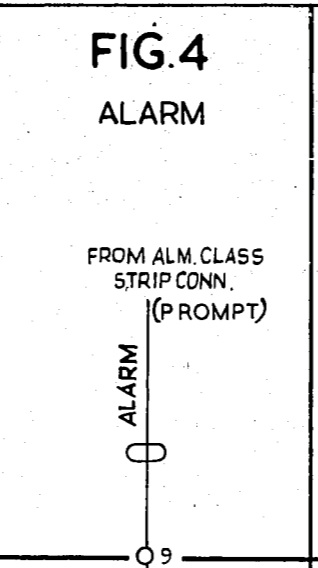


FIG. 4A
1 PER RECORDER

REF: GBW 11030 OR EQUIV

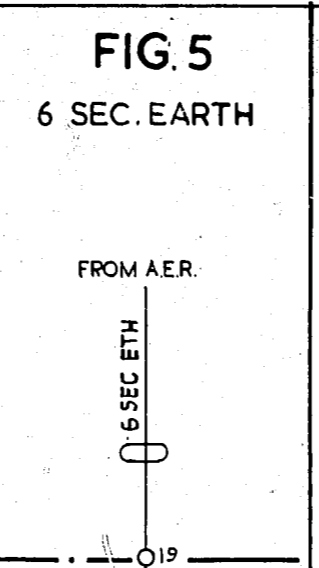


FIG. 5A
1 PER RECORDER

REF: GBW10920 OR EQUIV

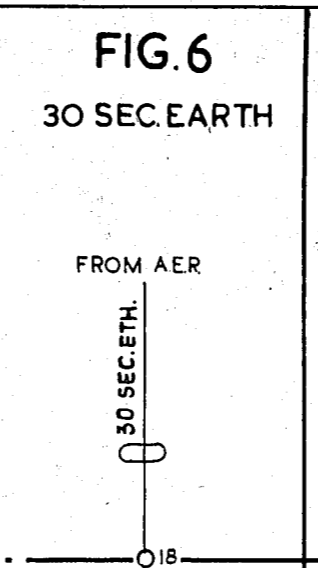


FIG. 6A
1 PER RECORDER

REF: GBW 10920 OR EQUIV

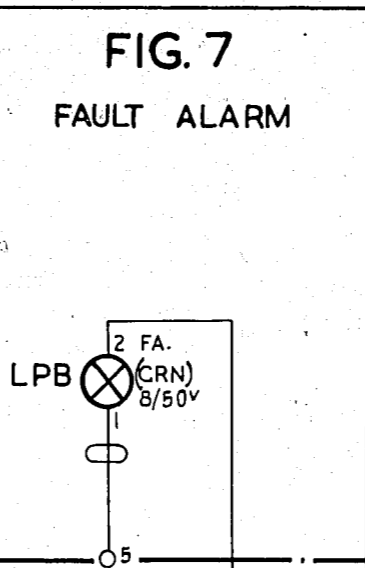


FIG. 7A
1 PER RECORDER

REF: GBW 11030 OR EQUIV

	TRAFFIC RECORDER	FIGURE NUMBERS REQ'D	
		FIRST RACK	SECOND & SUBSEQUENT RACK
EXCHANGE WITH IMPULSE MACHINE	ACCESS RACK CONTROL RACK COMBINED ACCESS & CONTROL RACK	1,2 1,2,3,4,5,6,7 1,2,3,4,5,6,7	1,2 1,2 -
EXCHANGE WITHOUT IMPULSE MACHINE	ACCESS RACK CONTROL RACK COMB. ACCESS & CONTROL RACK	1,2 1,2,4,5,6,7 1,2,4,5,6,7	1,2

NOTES

1. ALL FUSES NOT OTHERWISE SPECIFIED TO BE 1·5A
2. EXCEPT WHERE OTHERWISE STATED, ALL WIRING BEARING A COLOUR TO BE 20 SWG.
3. UNLESS OTHERWISE SPECIFIED TAGS ARE ON RACK MISC. STRIP CONN.

<input type="checkbox"/> SLOW RELEASE		<input checked="" type="checkbox"/> SLOW OPERATE	
TRAFFIC RECORDER. RACK COMMON SERVICES. ACCESS & CONTROL EQUIPT.			
AMENDMENT PARTICULARS		ISSUE DATE. 28-3-49	APP. K.B.
		ISSUE DATE.	APP.
		50V. E	
NZPO		GBW11040	
PH 12/28	DRAWN J.C.F.	CHECKED [Signature]	WIRED [Signature]
		CIRCUIT [Signature]	