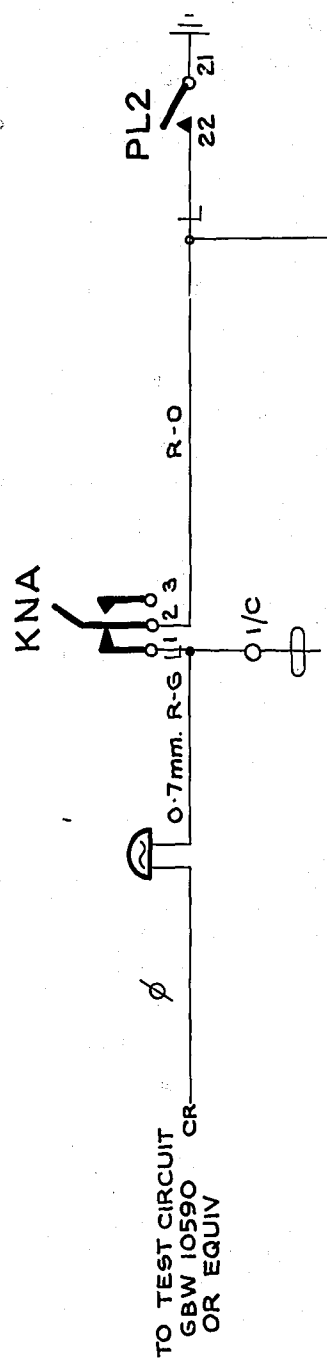
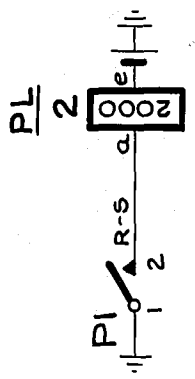
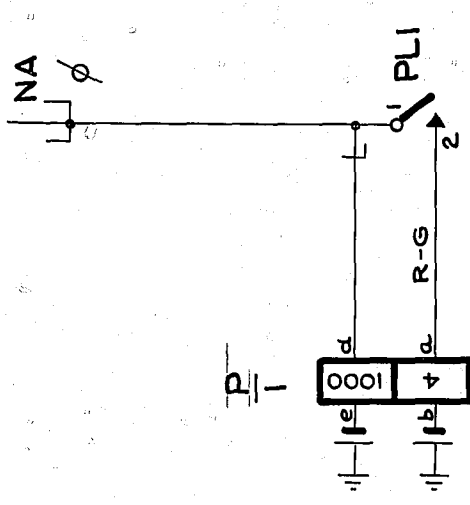


TO LINE LAMPS
& RELAYS



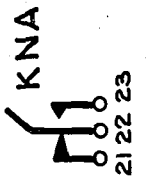
FROM LINES TO
TEST SELECTOR
GBW 10480 FIG.1
OR EQUIV.

FROM ALM. EXT. CCT.
GBW 10580 FIG.1 OR 4
OR EQUIV.

BATT. BK 0.7mm. PILOT FUSE — Pb - Pe - PLe
EARTH R 0.7mm. ETH. BAR — PI - PL21

NOTES

1. Ø FOR WIRING SEE GBW 10600 OR EQUIV.
2. ALL WIRING NOT OTHERWISE SPECIFIED TO BE 0.5mm.
3. FUSING 1.5A PER CCT.



NIGHT ALARM (KNA)
2

SLOW RELEASE SLOW OPERATE

**TEST RACKS
NIGHT ALARM CIRCUIT**

RE-TRACED & METRICATED (157688)	2A	15-8-78	R.E.D.
CONNECTION TO ALM. EXTN. CCT. ADDED (35081)(72624)	2	16-11-60	D.B.H.
AMENDMENT PARTICULARS	ISS	DATE	APP
N.Z. P.O.	DRAWN	CHECKED	WIRING CIRCUIT

SIZE A4 50V E
GBW 11010