

FIG. 2B A.E.R. PER AUTO FLOOR

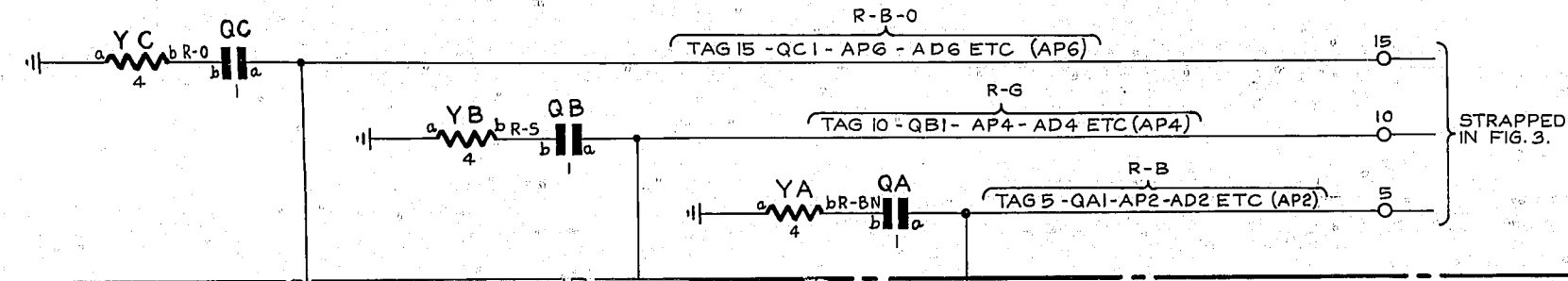


FIG. 2A SECTION RELAYS PER AUTO SECTION

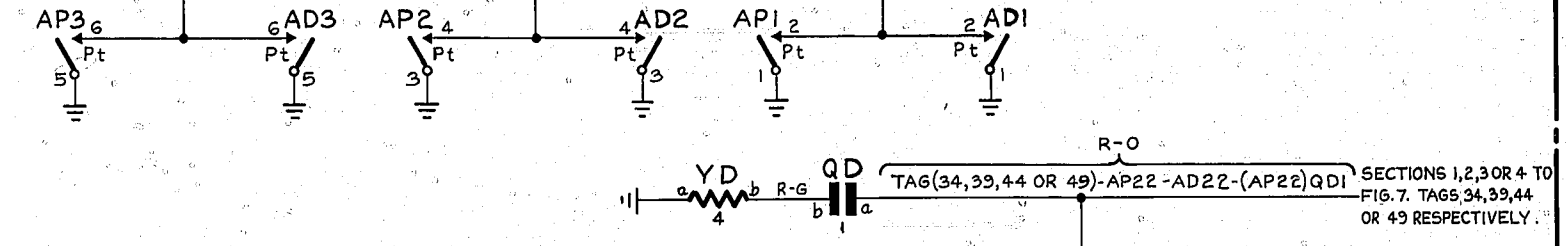


FIG. 12A ALARM CLASSIFICATION STRIP CONN. PER SUB-SECTION

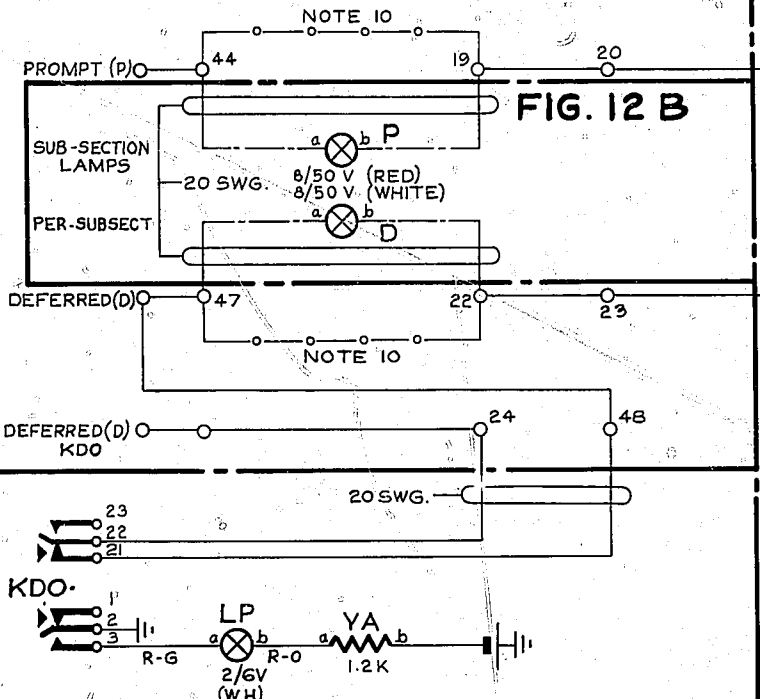


FIG. 12B SUB-SECTION LAMPS PER-SUBJECT

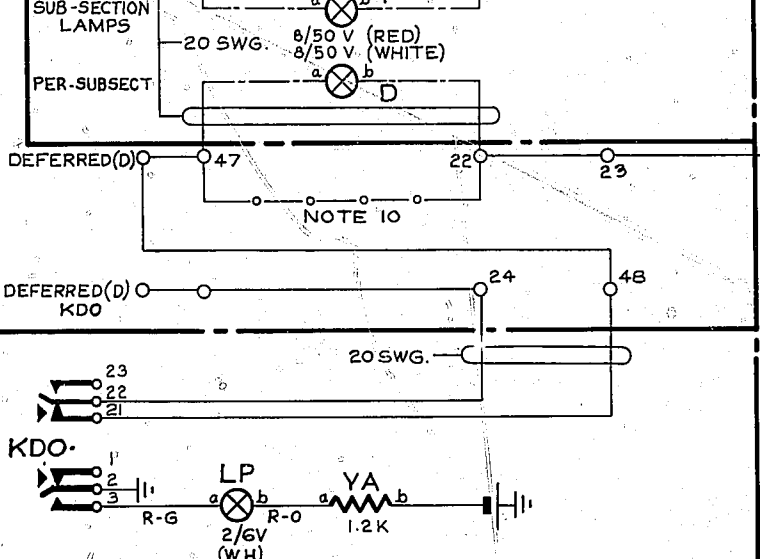


FIG. 12C CUT-OFF KEY

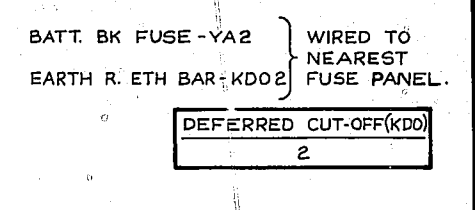


FIG. 10 PER EXCHANGE

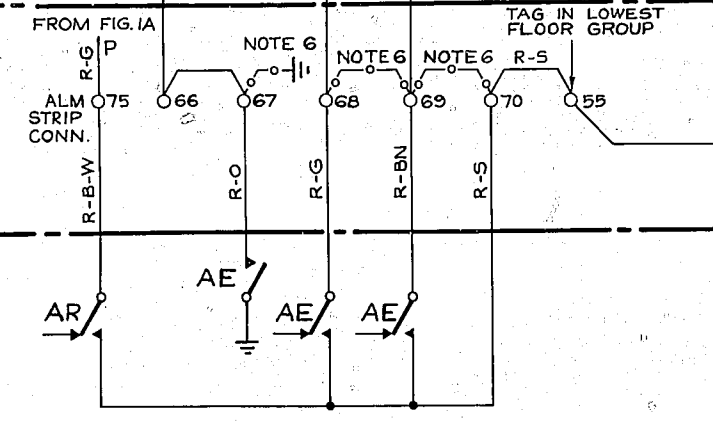


FIG. 13 UNISELECTOR OVERFLOW ALARM CIRCUIT

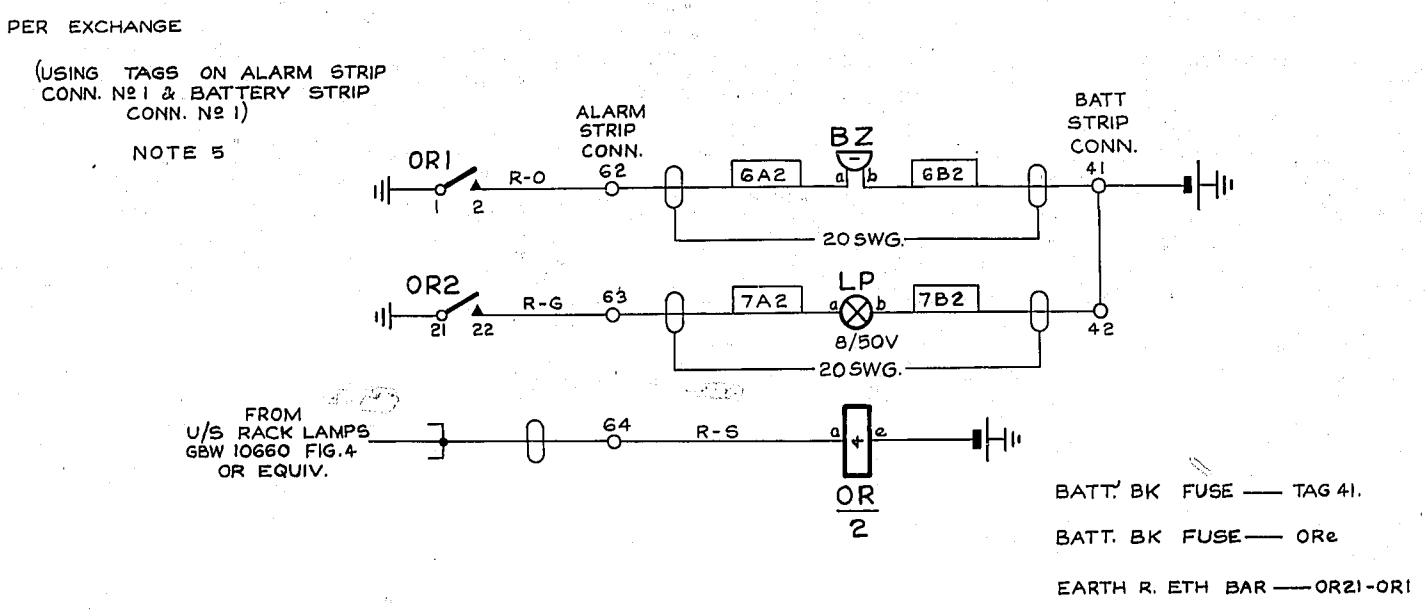


FIG. 1 A.E.R. SECTION RELAYS - POWER

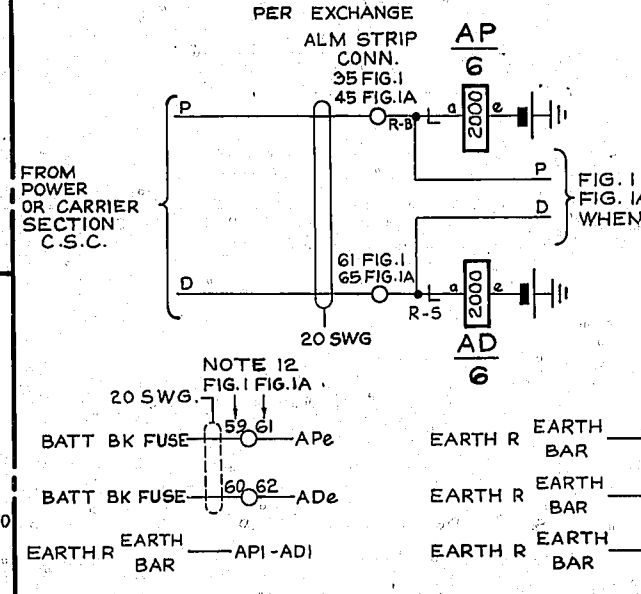


FIG. 4 A.E.R. SECTION RELAYS - AUTO

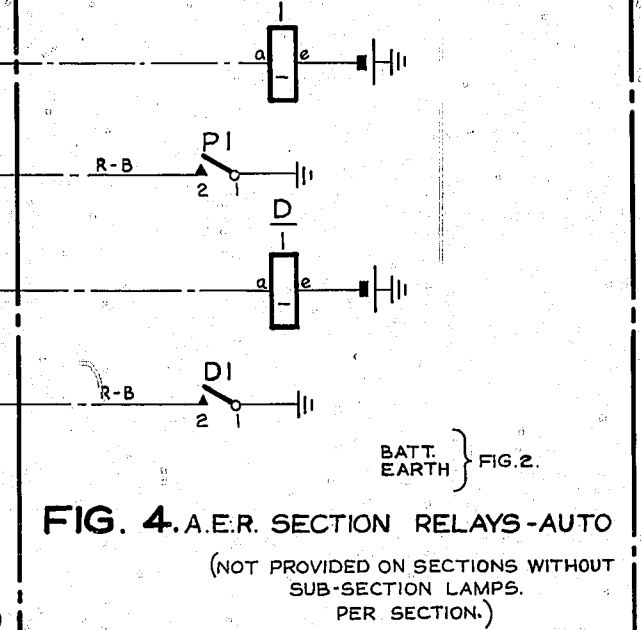


FIG. 14 POWER FAIL RELAY PER EXCHANGE

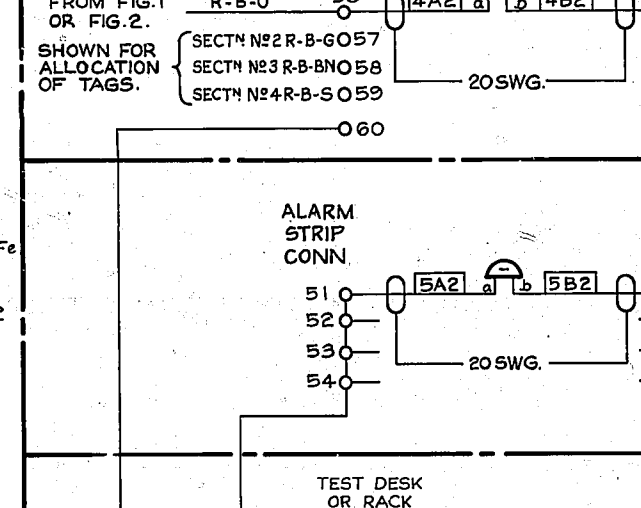


FIG. 3 A.E.R. STRAPS ON ALARM STRIPS CONN. PER EXCHANGE

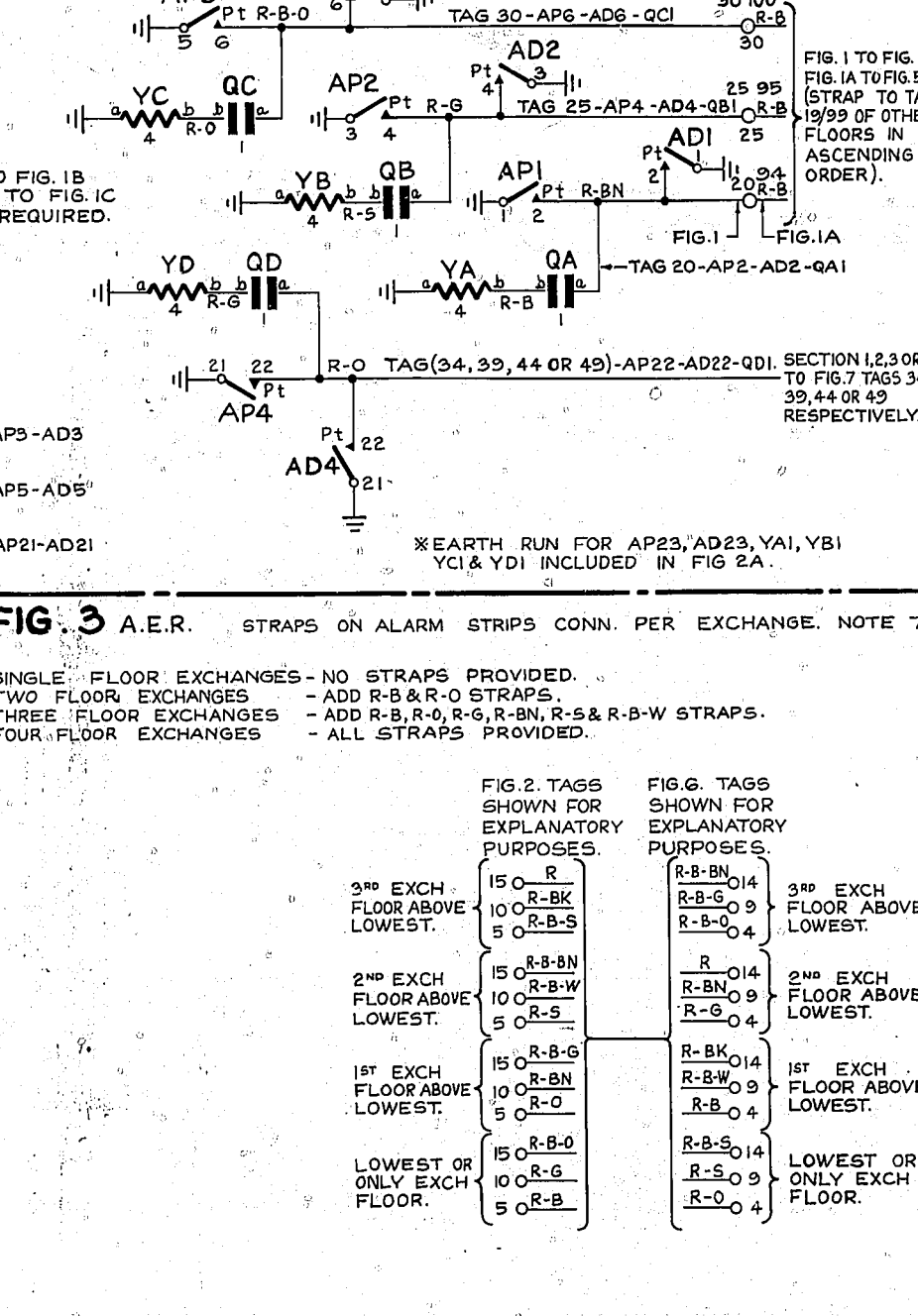


FIG. 8 SECTION BELL

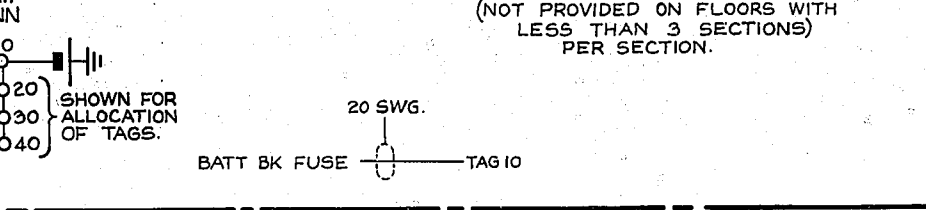


FIG. 9 FLOOR BELL

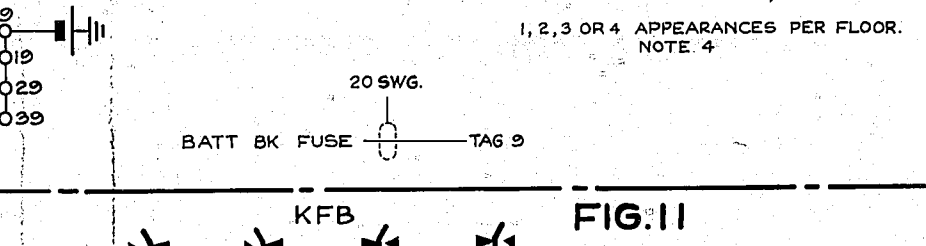


FIG. 11 TEST DESK OR TEST RACK FLOOR BELL CUT-OFF KEY

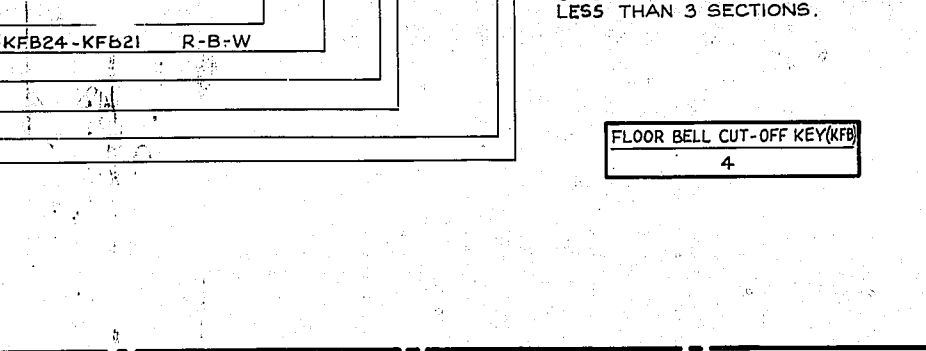


FIG. 5 FLOOR LAMP - POWER

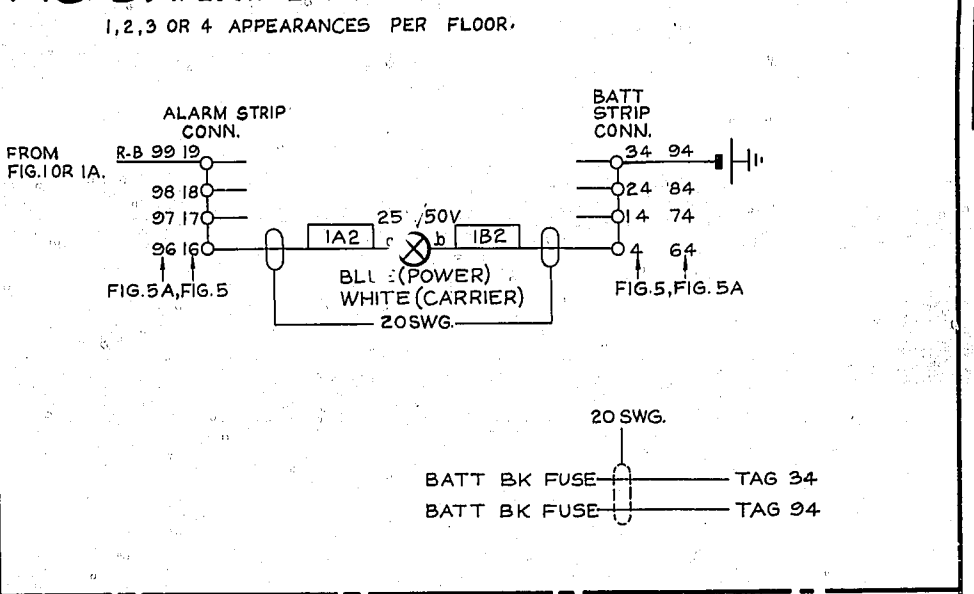


FIG. 6 FLOOR LAMP - AUTO

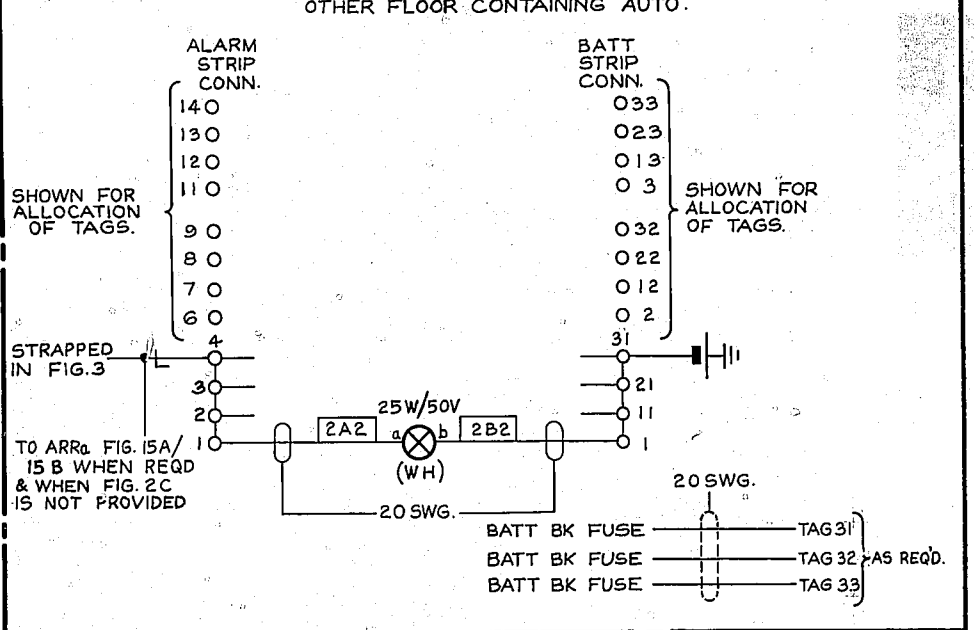
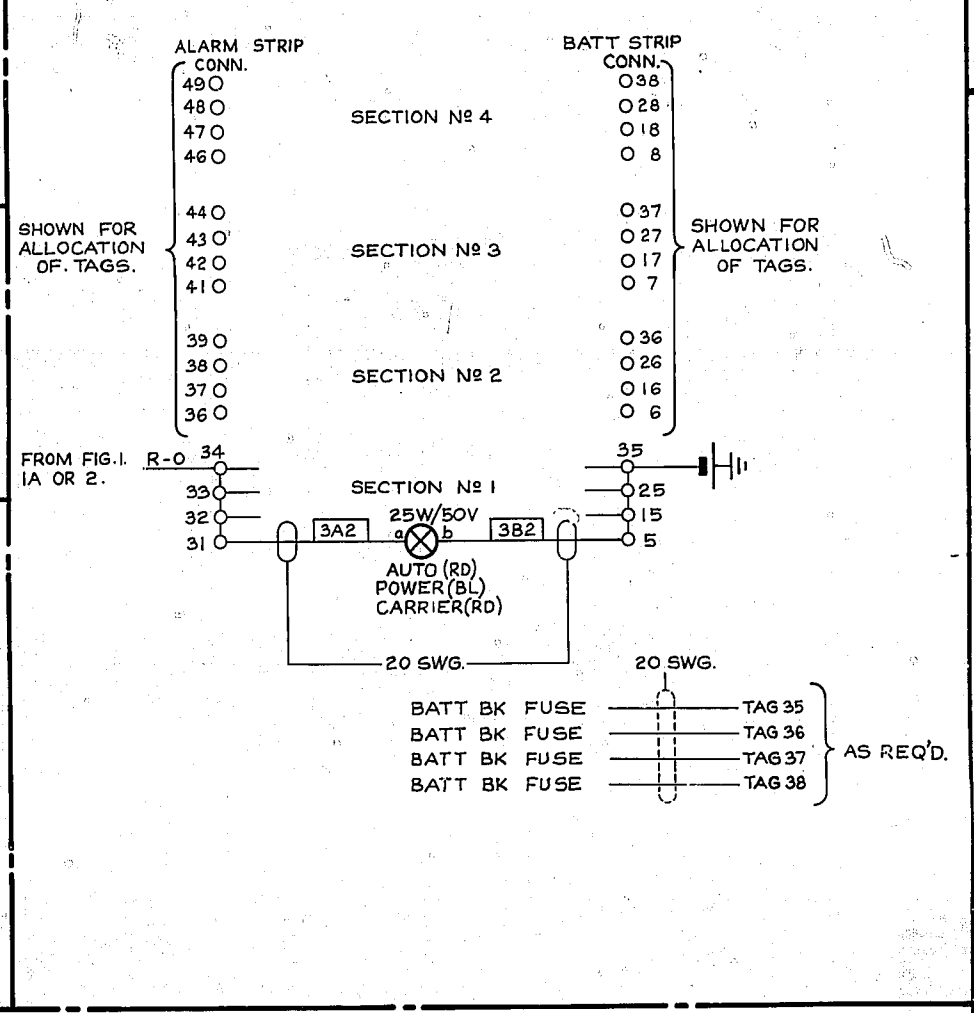


FIG. 7 SECTION LAMP - AUTO, POWER OR CARRIER



NOTES:

- 1. FUSING - FIG. 1, AP 1.5A, AD 1.5A... 2. FIGS. 1 TO 9 SHOW THE ULTIMATE NUMBER OF TAGS PER FLOOR... 3. WHEN SECTION BELLS ARE NOT PROVIDED... 4. WHEN FLOOR BELLS ARE PROVIDED ON SINGLE FLOOR EXCHANGES... 5. BUZZER & LAMP MOUNTED WHERE REQUIRED... 6. WHEN ENGINEERING STAFF IS IN CONTINUOUS ATTENDANCE... 7. STRAPS NOT TO BE PROVIDED FROM TAG 5, 10 OR 15... 8. EXCEPT WHERE OTHERWISE STATED... 9. WIRING SHOWN IN BRACKETS IS PROVIDED ON THE SECTION AND FLOOR CONTAINING THE A.E.R... 10. WHEN FIGS. 4 & 12B ARE PROVIDED... 11. FIG. 14 IS REQUIRED ONLY WHERE FACILITIES ARE PROVIDED... 12. THESE TERMINALS ON BATT. STRIP CONN. PROVIDED ONLY WHEN FUSES ARE ON AUXILIARY GROUP FUSE PANEL.

Technical drawing header including title 'AUDIBLE & VISIBLE ALARM SCHEME', drawing number 'GBW 10380', and revision table.



FIG. 1B A.E.R. SECTION RELAYS - POWER
FIG. 1C A.E.R. SECTION RELAYS - CARRIER
 FOR INCREASED LAMP APPEARANCES (4 MAX) PER EXCHANGE

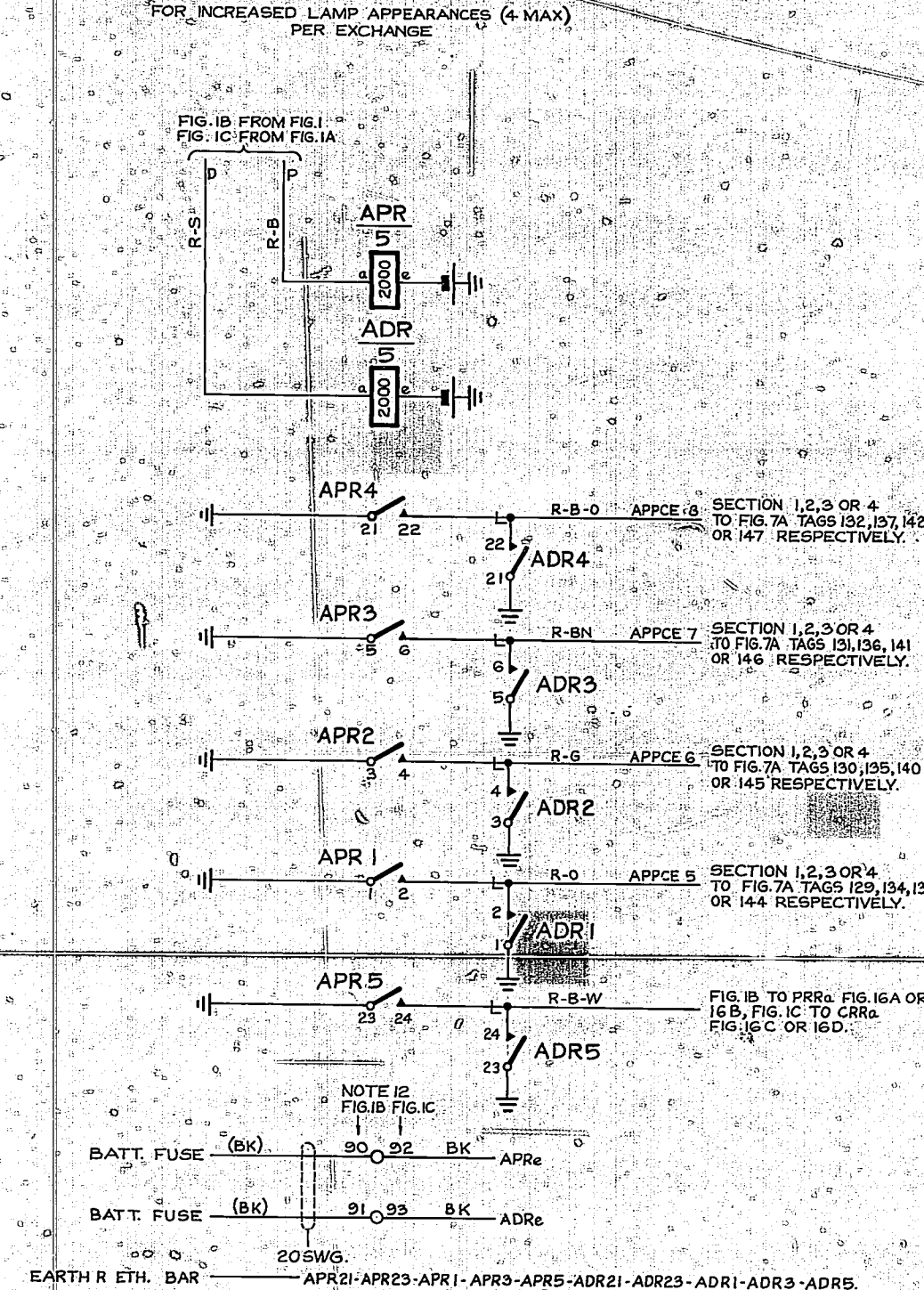


FIG. 2C SECTION RELAYS - AUTO
 FOR INCREASED LAMP APPEARANCES (4 MAX) PER AUTO SECTION

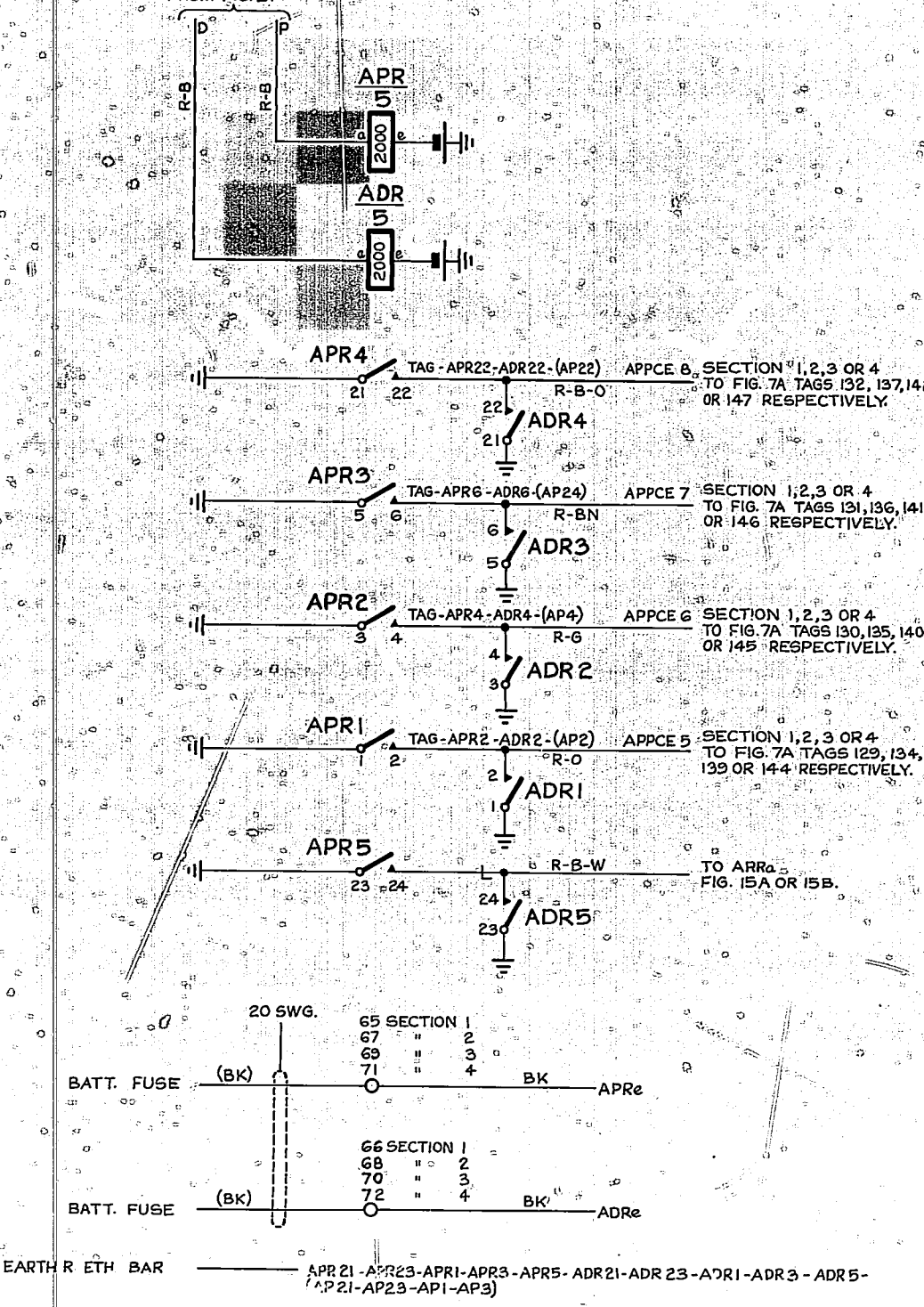


FIG. 7A SECTION LAMP - AUTO, POWER OR CARRIER
 FOR INCREASED APPEARANCES (4 MAX)

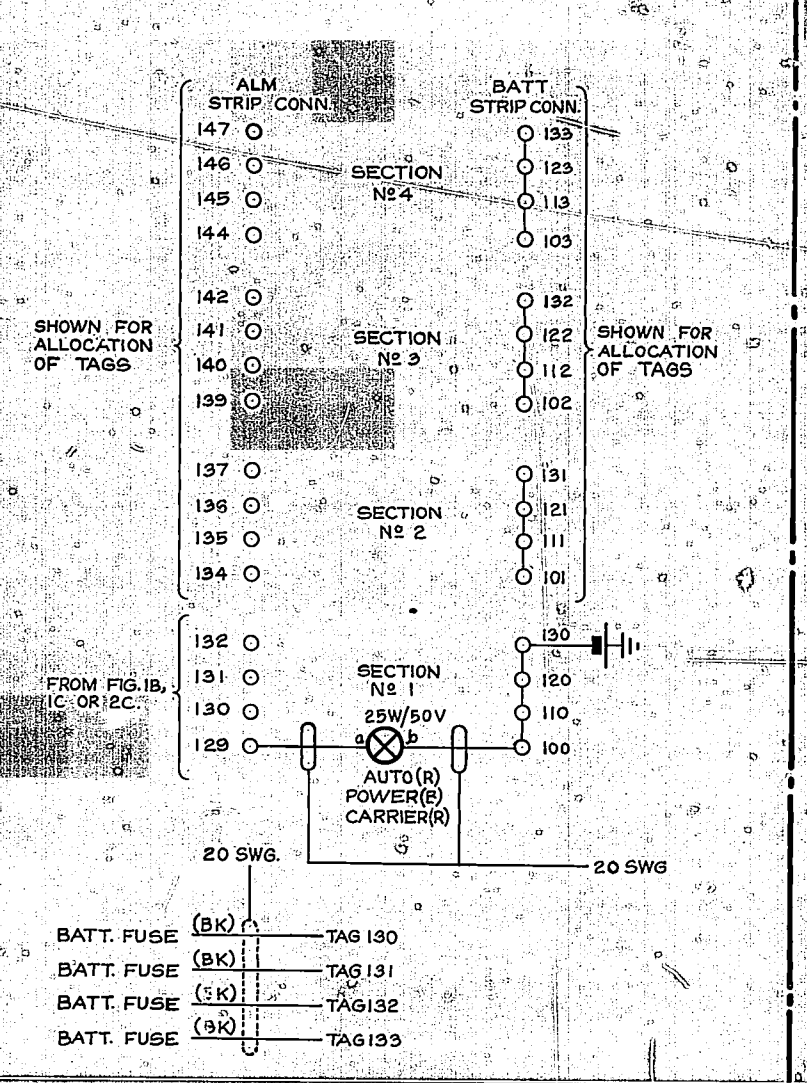


FIG. 5B FLOOR LAMP - POWER
FIG. 5C FLOOR LAMP - CARRIER
 NOT PROVIDED FOR INCREASED APPEARANCES (4 MAX) ON SINGLE FLOOR EXCHANGES OR ON FLOOR CONTAINING POWER/CARRIER

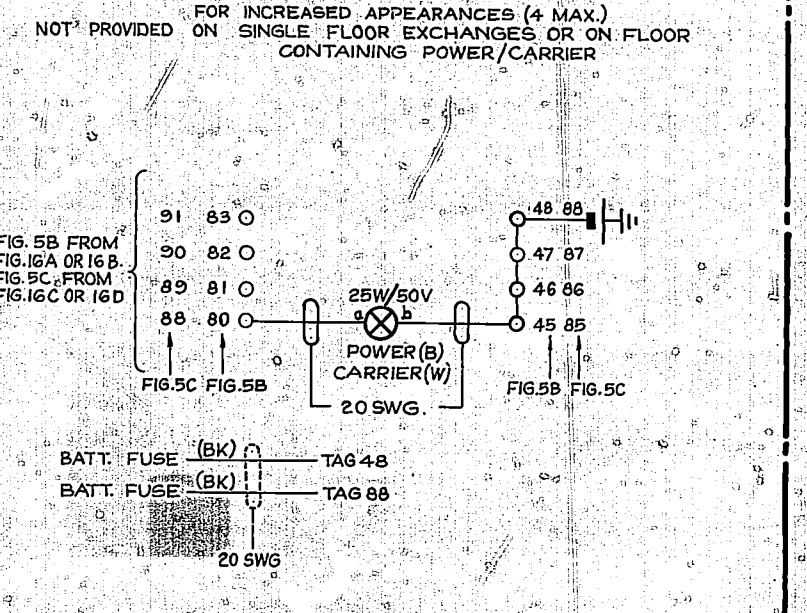


FIG. 3A A.E.R.
 STRAP ON ALARM STRIP CONN FOR INCREASED APPEARANCES OF FLOOR LAMPS, EXCHANGES WITH 2 FLOORS.

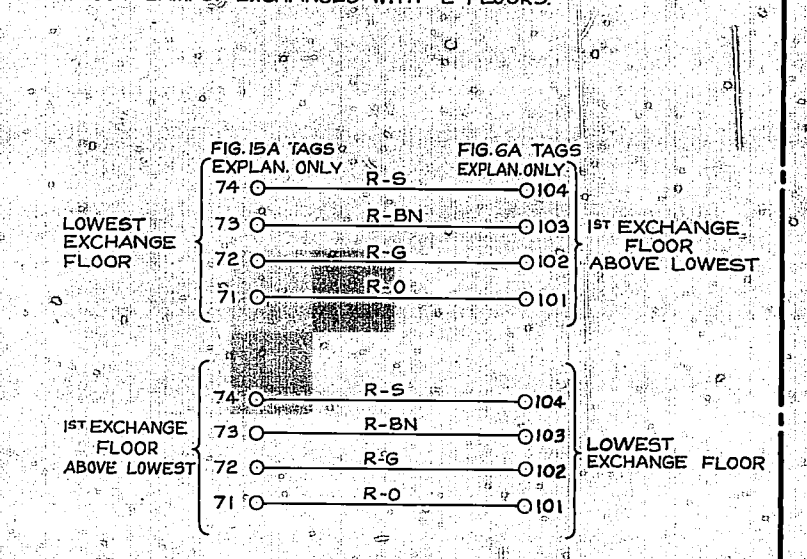


FIG. 3B A.E.R. STRAPS ON ALARM STRIP CONN FOR INCREASED APPEARANCES OF FLOOR LAMPS, EXCHANGES WITH 3 FLOORS.

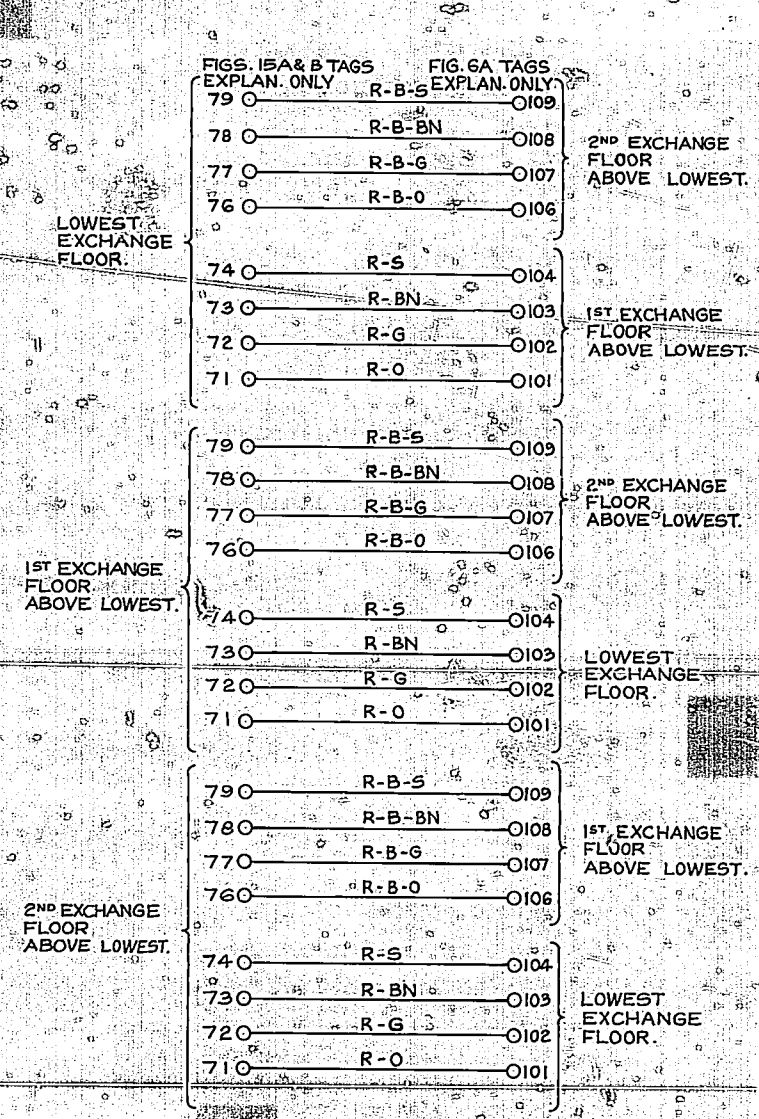
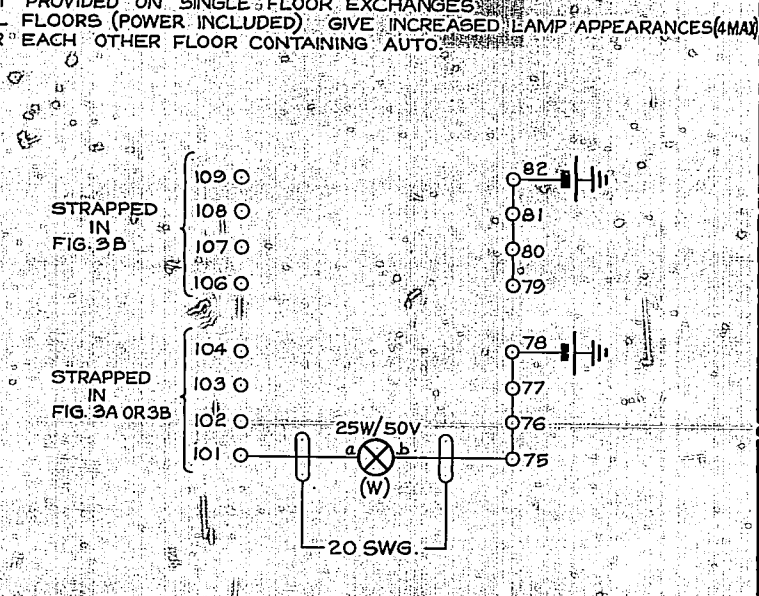
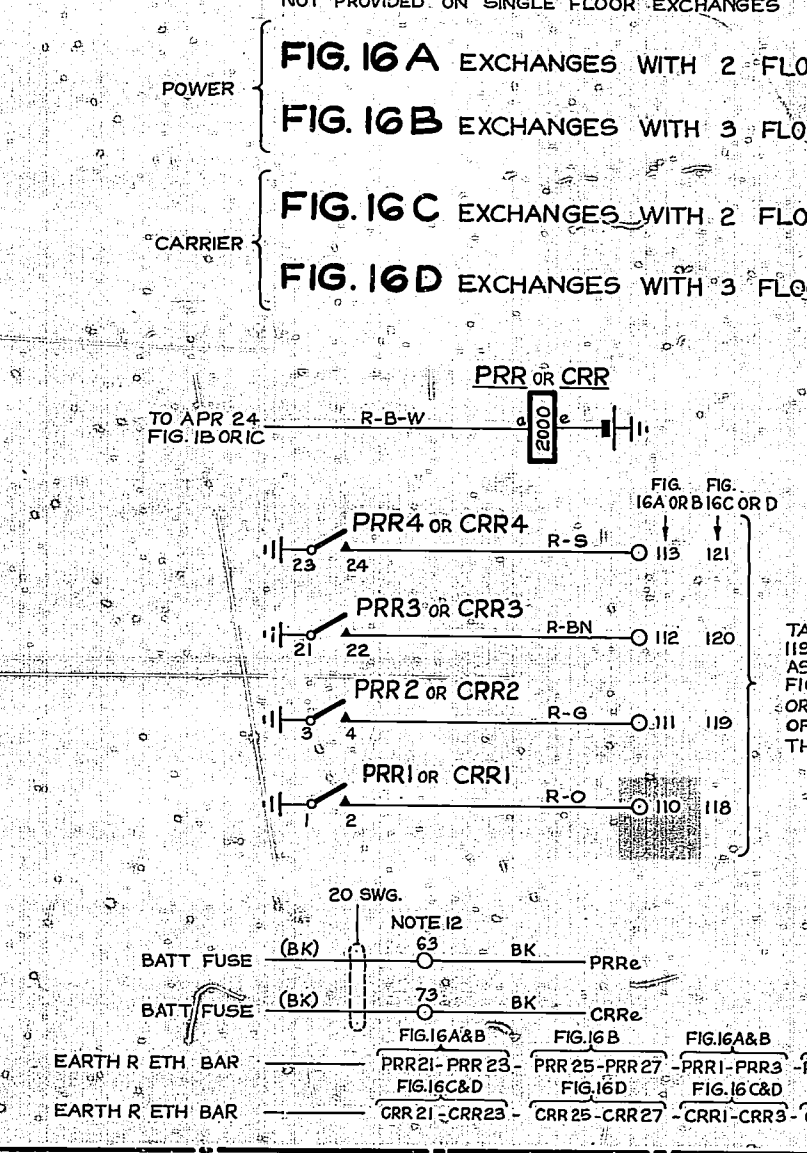


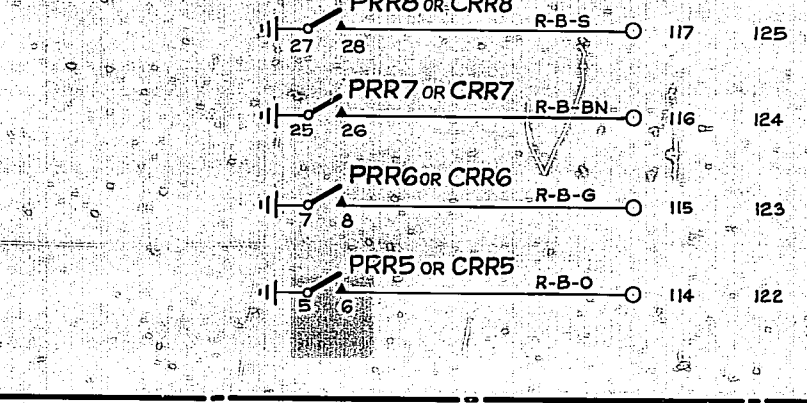
FIG. 6A FLOOR LAMP - AUTO
 NOT PROVIDED ON SINGLE FLOOR EXCHANGES. ALL FLOORS (POWER INCLUDED) GIVE INCREASED LAMP APPEARANCES (4 MAX) FOR EACH OTHER FLOOR CONTAINING AUTO



FLOOR RELAY - POWER OR CARRIER
 FOR INCREASED LAMP APPEARANCES (4 MAX) NOT PROVIDED ON SINGLE FLOOR EXCHANGES

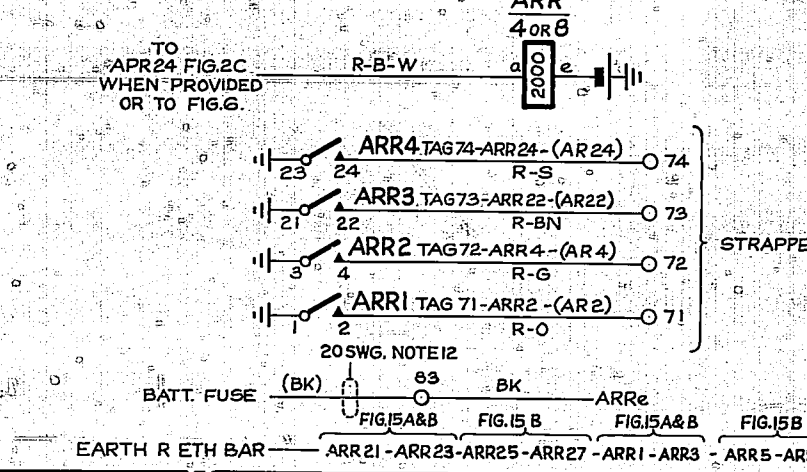


PART OF FIG. 16 B OR 16 D

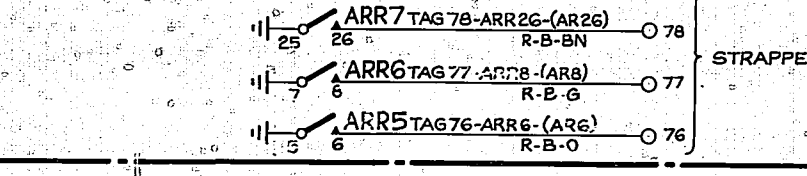


FLOOR RELAY - AUTO
 FOR INCREASED LAMP APPEARANCES (4 MAX) PER AUTO FLOOR NOT PROVIDED ON SINGLE FLOOR EXCHANGES.

FIG. 15A EXCHANGES WITH 2 FLOORS RELAY ARR 4
FIG. 15B EXCHANGES WITH 3 FLOORS RELAY ARR 8



PART OF FIG. 15 B



AUDIBLE & VISIBLE			
RETRACED.	(6518)	9	7.3.75 B.S.H
NO CHANGE, ISSUE ADVANCED ONLY.	(8034)	9	19.3.71 B.S.H
	(46545)	6	20.4.67 A.I.B.
AMENDMENT PARTICULARS	ISSUE DATE	APP	SIZE A.1 50V E.
NZPO	DRAWN	CHECKED	WIRED
			CIRCUIT
GBW 10980			SHEET 2-2