

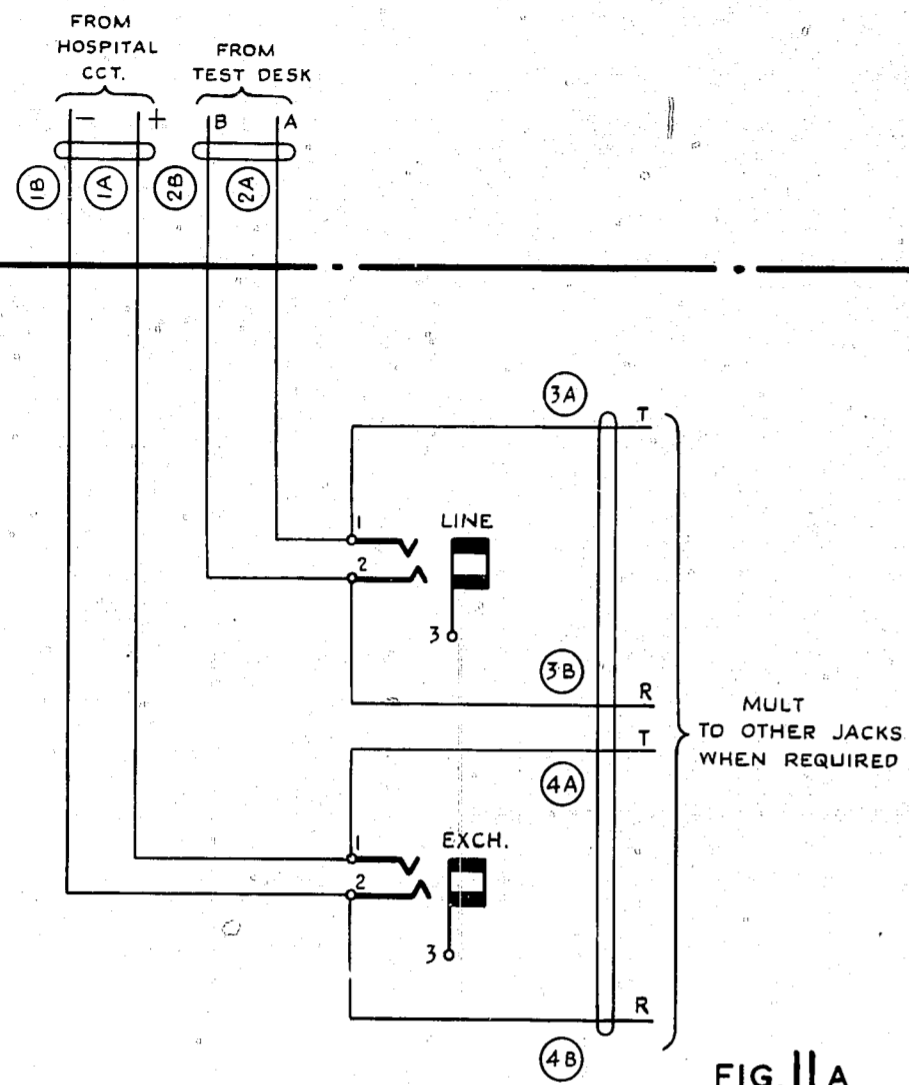
- NOTES**
1. BUSYING PLUG & SLEEVE CONNECTION FITTED ONLY ON CORD 5/153A USED FOR PBX LINES. CORD 4/153B COMPLETE USED FOR INDIVIDUAL & PARTY LINES.
  2. ALL WIRING UNLESS OTHERWISE SPECIFIED TO BE 25 SWG.
  3. WHEN THE POSITION OF THE TELEPHONE LAMPS OR BUZZER NECESSITATES CABLING ON THE WALLS USE CABLE E & CC 10 LBS.
  4. DELETED.
  5. DIAL IMPULSE SPRINGS ARE CONNECTED IN SERIES WITH IMPULSE SPRINGS OF OTHER TELEPHONES.
  6. LAMPS 8/50V ARE USED IN CONJUNCTION WITH BRO. JACK LAMP 33. WHEN BRO. CASE LAMP MOUNTING NR 1 IS SUPPLIED, USE LAMP 2/50V.

TITLE	AMENDED	SUPERSESSION	NOTE	DATE	BY
FIG 7D & NOTES 5 & 6	ADDED	TELE 333 WAS 121	9		
NO CHANGE	ISSUE ADVANCED ONLY		8		
NO CHANGE	ISSUE ADVANCED ONLY		7		
FIGS 8 & 9	MODIFIED		6		
FIGS 8 & 10	MODIFIED		5		
NOTES 9	ADDED	(60556)*	12	4-11-82	J.R.
NO CHANGE	ISSUE ADVANCED ONLY	(94566)	12	7-2-66	J.C.
FIG 2F ADDED, FIGS 10B, 10D & NOTE 4	DELETED	MISC MODS	11	23-12-63	D.B.H
AMENDMENT PARTICULARS			ISSUE	DATE	APP'D

MISCELLANEOUS CIRCUITS  
ON MAIN DISTRIBUTION FRAME FLOOR TYPE  
GBW 10870  
SIZE L 50V E  
SUPERSEDED BY GBW 1597D FOR NEW WORK  
SHEET 1-2

0  
5 Centimetres  
10  
15  
20  
25  
30

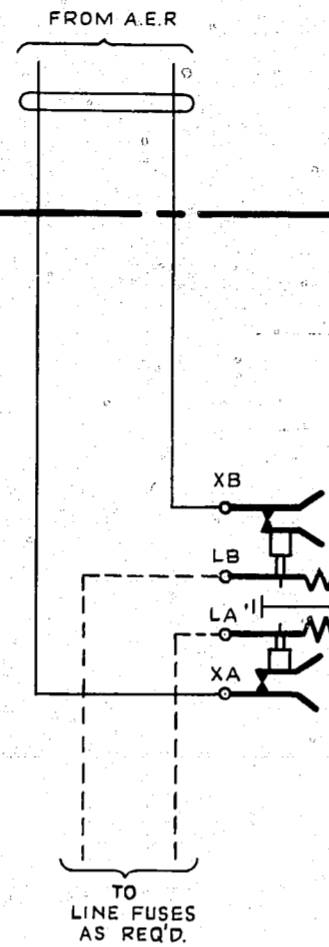
**FIG. 11**  
**HOSPITAL CIRCUIT.**



**FIG. 11A.**

EXCH. SIDE.  
ONE PER CIRCUIT MULTIPLD IN JACK  
BOXES ADJACENT TO RURAL TERMINATIONS ONLY  
REF.:- GBW 12690 OR EQUIV.

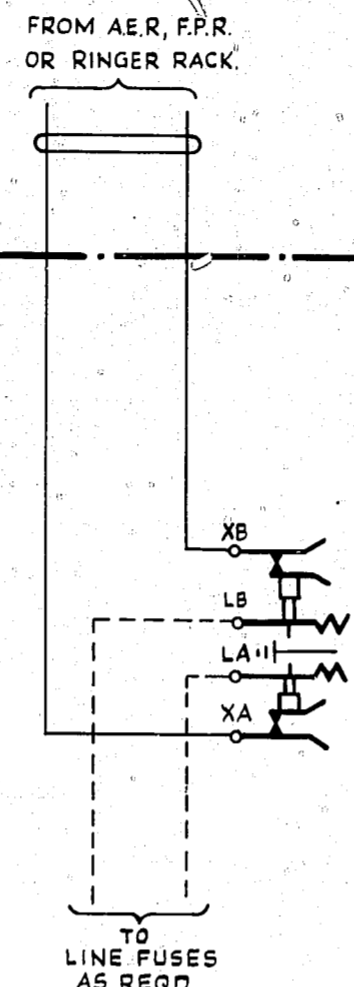
**FIG. 12**  
**EXTERNAL CLOCK PULSE  
DISTRIBUTION**



**FIG. 12A**

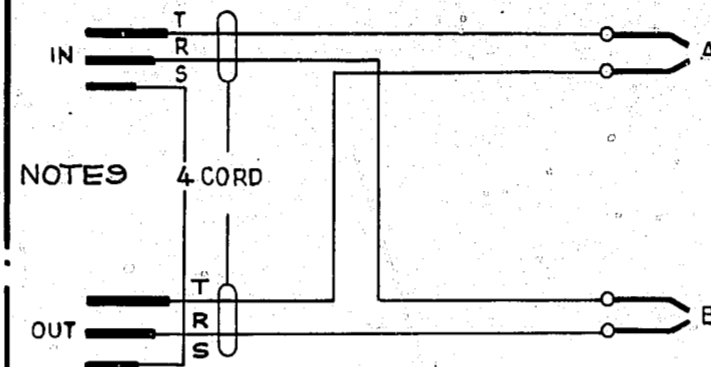
EXCH. SIDE 1 PER CCT.  
200 PAIR PER VERTICAL MDF ONLY

**FIG. 13**  
**PBX. RINGING  
DISTRIBUTION**



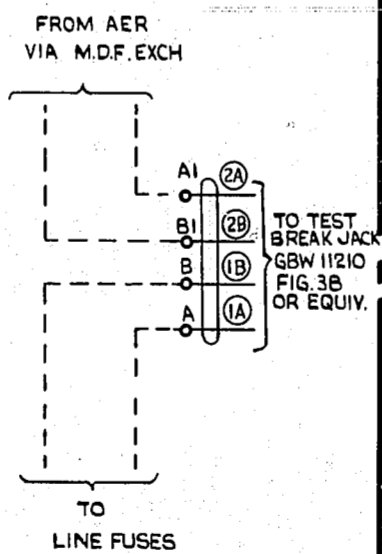
**FIG. 13A**

EXCH. SIDE 1 PER CCT.  
200 PAIR PER VERTICAL MDF ONLY



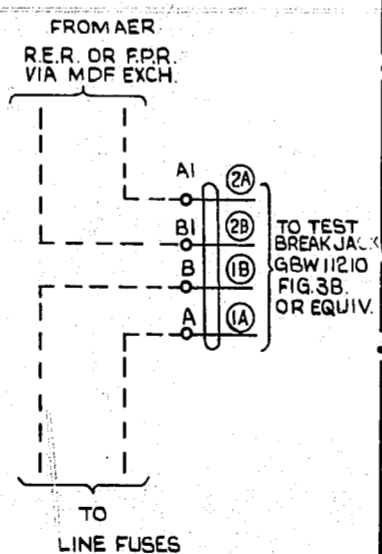
**FIG. 14**

CORD FOR USE WITH FIGS 2B, 3B, 11A  
AND B.P.O. NO 33/2A TEST JACK.



**FIG. 12 B**

EXCH. SIDE 1 PER CCT.  
400 PAIR PER VERTICAL MDF ONLY  
REF.:- GBW 11210 FIG. 5 OR EQUIV.



**FIG. 13 B**

EXCH. SIDE 1 PER CCT.  
400 PAIR PER VERTICAL MDF ONLY  
REF.:- GBW 11210 FIG. 5 OR EQUIV.

NOTE 9 ADDED	(80556)	12A	4-1182	J.R.
FIG. 14 ADDED	(94566)	12	7-266	J.C.
FIGS. 12B & 13B ADDED	(69723)	11	23-1263	D.B.H.
TITLE AMENDED, SUPERSESSION NOTE ADDED		10		
NO CHANGE ISSUE ADVANCED ONLY		9		
FIG. 13 REFS. TO F.P.R. & R.R. ADDED		8		
FIGS 13 & 13A ADDED.		7		
NO CHANGE. ISSUE ADVANCED ONLY.		6		
FIG. 12. ADDED.		5		
NO CHANGE. ISSUE ADVANCED FOR RECORD PURPOSES ONLY		4		
		1		
AMENDMENT PARTICULARS		ISSUE	DATE	APPD
N.Z.P.O.		DRAWN	CHECKED	WIRING
		I.M.B.		5/11/50
				CIRCUIT

SUPERSEDED BY GBW 15970 FOR NEW WORK

MISCELLANEOUS CCTS.  
ON MAIN  
DISTRIBUTION FRAME.  
FLOOR TYPE

GBW 10870

SHEET 2-2